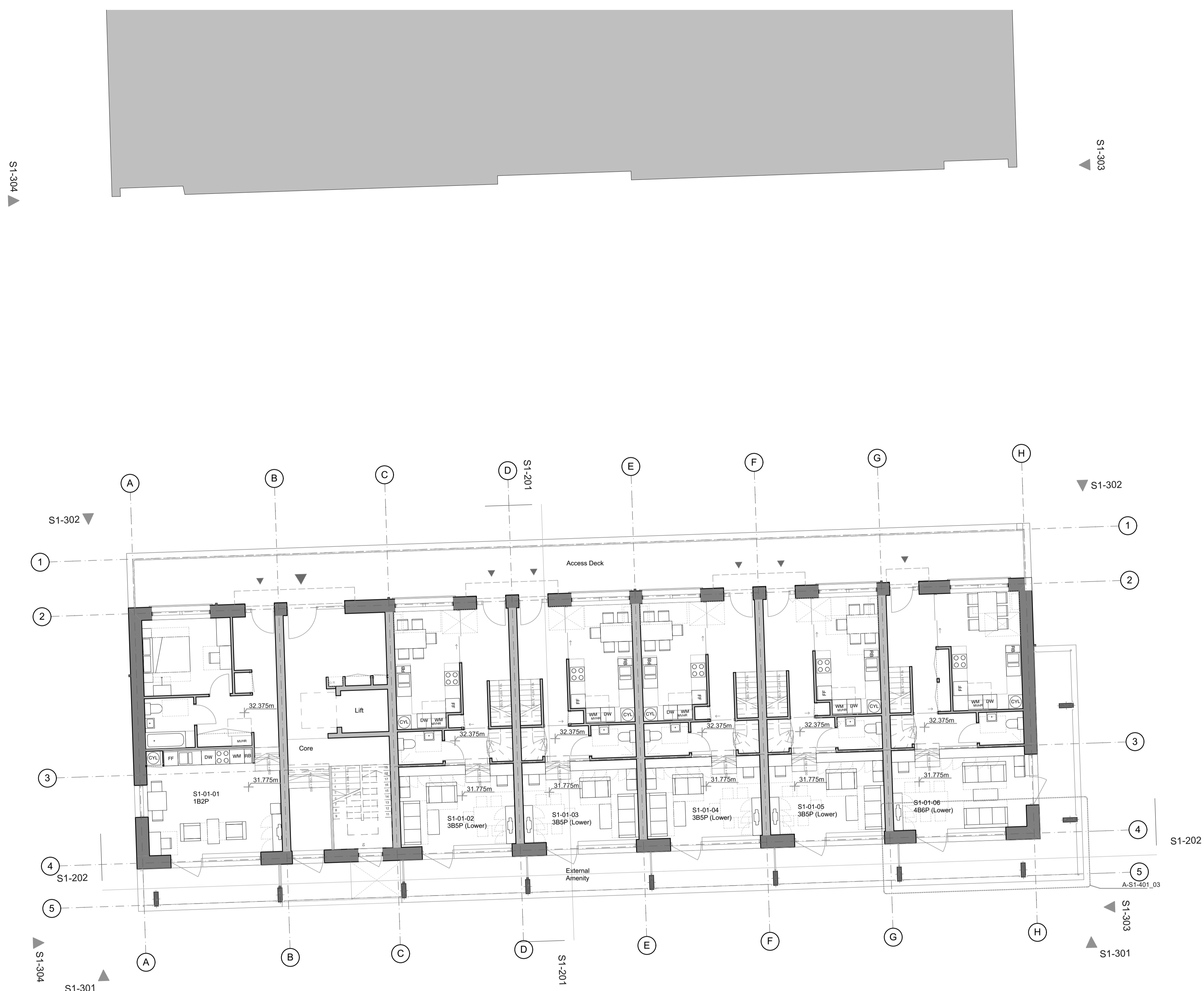
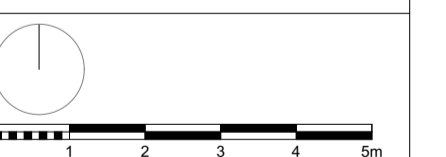


For materials and details, please refer to 1328_400 series drawings and Design & Access statement section 6, materials page.



REV	DATE	DESCRIPTION
GENERAL NOTES		
1		Measurements are based on metric system
2		All levels are relative to Ordnance Datum unless otherwise stated
3		Dimensions are given in millimetres (mm)
4		Dimensions are given in metres (m)
5		Dimensions are given in feet and inches (ft in)
6		Dimensions are given in feet and inches (ft in) unless otherwise stated
7		Dimensions are given in feet and inches (ft in) unless otherwise stated
8		Dimensions are given in feet and inches (ft in) unless otherwise stated
9		Dimensions are given in feet and inches (ft in) unless otherwise stated
10		Dimensions are given in feet and inches (ft in) unless otherwise stated

The data contained in this document is the property of mae. The data is provided for the recipient and is not to be used for any other purpose without the prior written consent of mae.



mae
 1 Naoroji Street London WC1X 0GS
 +44 (0)20 7704 6060
 office@mae-ftp.co.uk
 mae-ftp.co.uk

CLIENT London Borough of Camden	
PROJECT NAME Regent's Park Estate Infill	PROJECT NO. 1328
DRAWING NAME Robert Street Car Park - First Floor Plan	
STATUS Planning Draft	SCALE 1:100 @ A1
DRAWN BY	CHECKED BY
DATE 28/05/2015	DATE
DRAWING NO. 1328-P1-102	REV -