

+2.00

+2.00

+1.50

+1.00

+1.00

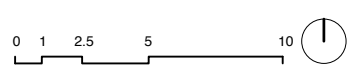
+0.50

0.00

- Residents only area
- Herbaceous border planter
- Albizia julibrissin* as multi-stemmed trees (Summer flowering)
- Possible future bridge link to mezzanine level
- Acer griseum* in herbaceous border planter
- Bench
- Cycle lane with larger format granite paving
- Cycle pump
- Liriodendron tulipifera* (Summer flowering)
- Drinking fountain with pebble rill
- Cycle stands
- Existing willow tree
- Residents only area
- Sarcococca confusa* hedge (Winter flowering)
- Shade (perforated metal sheet)
- Granite paving large flags to widened public realm and civic space between new housing blocs opposite future station development
- Foxglove trees (Summer flowering)
- Stainless steel pergola with Wisteria (late spring flowering)
- Grasses and roses
- Patterned tree grilles (mixture of patterns and sizes)
- Japanese cherry trees (Spring flowering)
- Cycle stands
- Swing
- Existing willow tree

- KEY
- Existing tree retained
 - Existing tree removed
 - New tree
 - New fruit tree
 - New special tree on corners
 - Wildlife flowering/fruited hedgerow
 - Evergreen hedges
 - Tree trunks
 - Grass
 - Long grass
 - Flowering meadow
 - Underplanting
 - Herbaceous borders
 - Pebbles with mosses/low ground cover
 - Communal growing spaces (concrete raised planters)
 - Seating
 - Stable-yard cobbles
 - Granite setts 200x100mm
 - Wood chip mulch
 - Breedon gravel
 - Sand
 - Concrete flags
 - Concrete + granite setts
 - Reused granite kerbs 300mm wide
 - In situ concrete
 - Highway boundaries
 - Water tank

East Architecture landscape urban design
 Unit 8
 49-59 Old Street
 London EC1V 9HX
 T 020 7490 3190
 E mail@east.uk.com
 www.east.uk.com



PROJECT
Regent's Park Estate

CLIENT
 LB Camden

DRAWING STATUS
 Planning

DATE
 May 2015

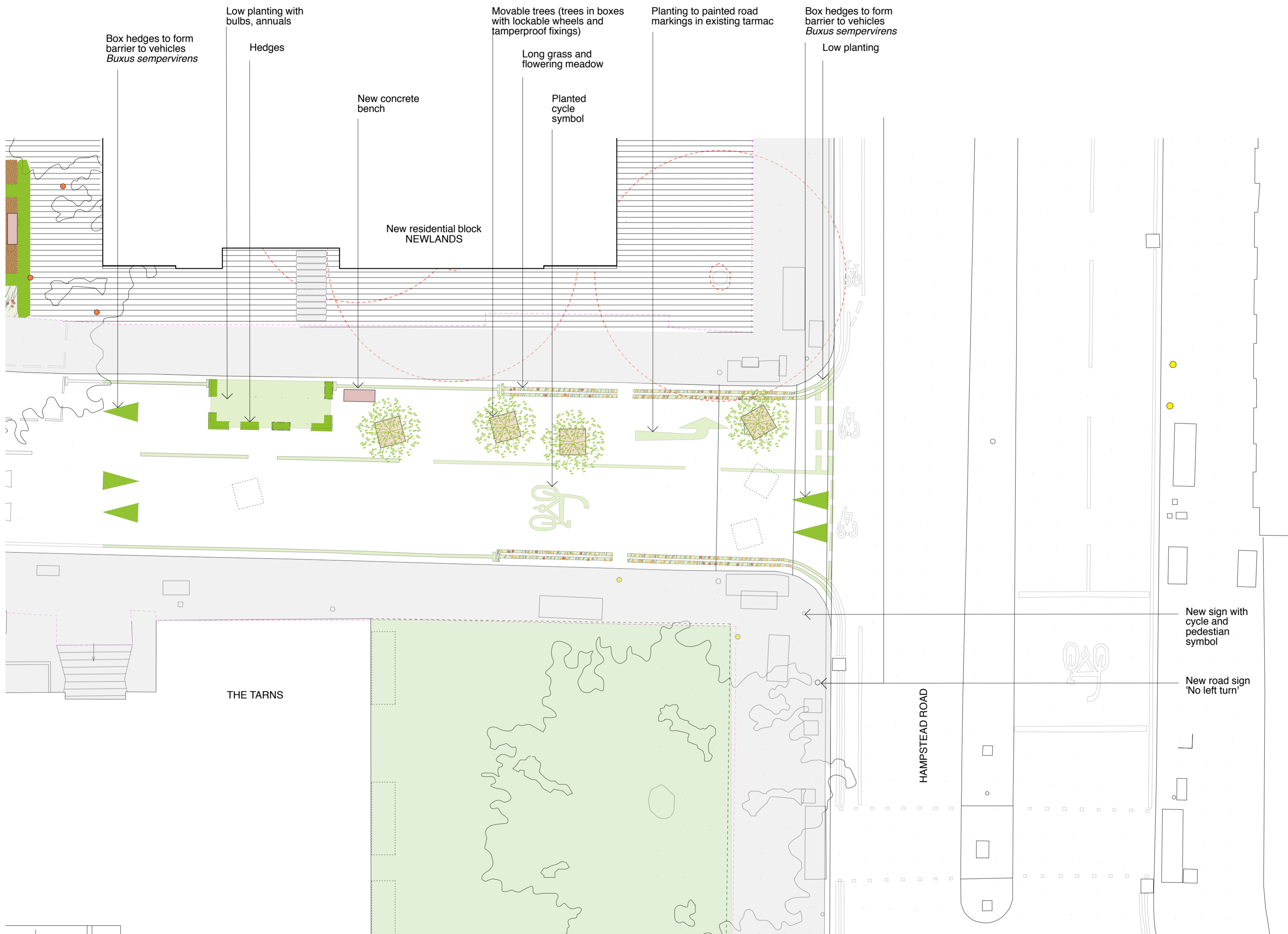
SCALE
 1:200

SIZE
 A2

REV
 -

DRAWING TITLE
 Proposed site plan
 Mitigation site
 The Tarns
 Long term

DRAWING NR
 114 RPE M3 101



Box hedges to form barrier to vehicles
Buxus sempervirens

Low planting with bulbs, annuals

Hedges

New concrete bench

New residential block
NEWLANDS

Movable trees (trees in boxes with lockable wheels and tamperproof fixings)

Long grass and flowering meadow

Planted cycle symbol

Planting to painted road markings in existing tarmac

Box hedges to form barrier to vehicles
Buxus sempervirens

Low planting

THE TARNS

HAMPSTEAD ROAD

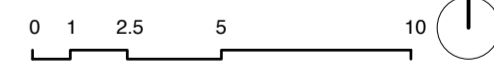
New sign with cycle and pedestrian symbol

New road sign 'No left turn'

East
Architecture landscape
urban design

Unit 8
49-59 Old Street
London EC1V 9HX
T 020 7490 3190
E mail@east.uk.com

www.east.uk.com



PROJECT
Regent's Park Estate

CLIENT
LB Camden

DRAWING STATUS
Planning

DATE
May 2015

SCALE
1:200

SIZE
A2

REV
-

DRAWING TITLE
Proposed site plan
Mitigation site
The Tarns
Short term

DRAWING NR
114 RPE M3 100