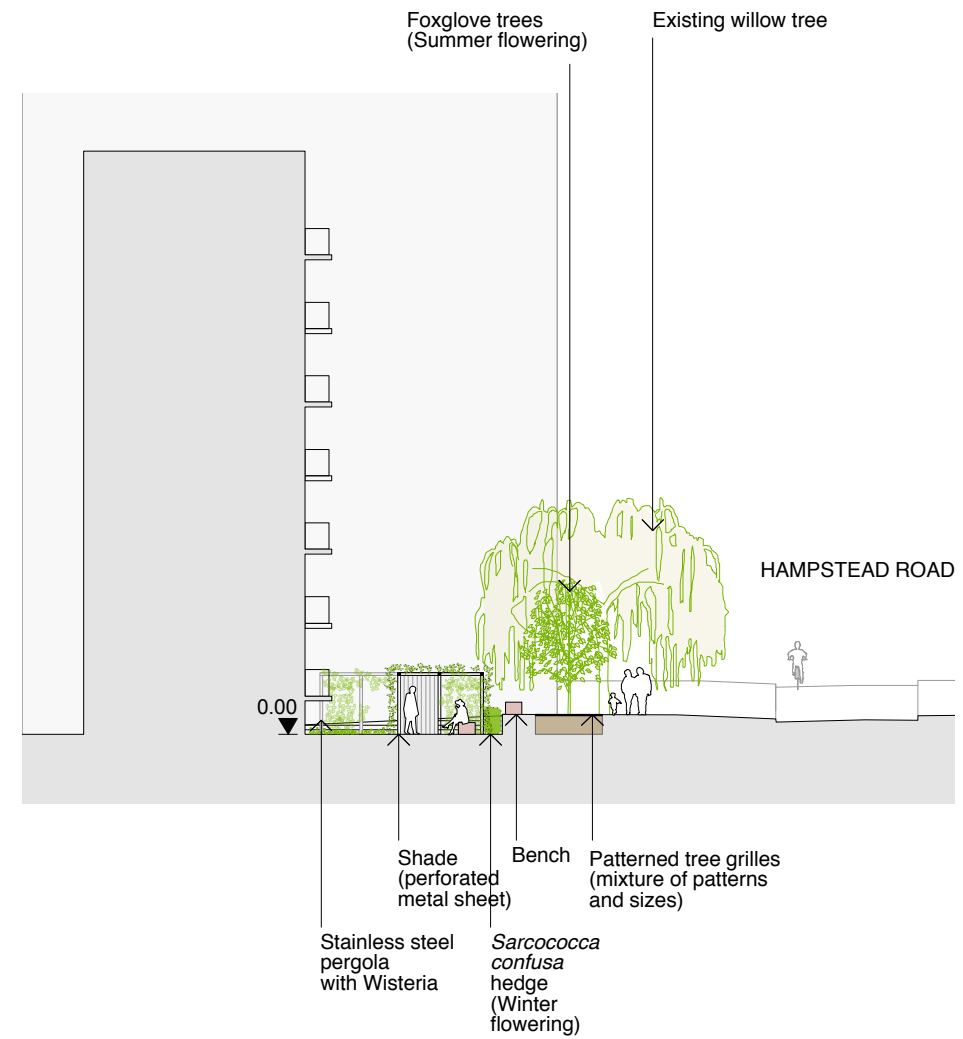
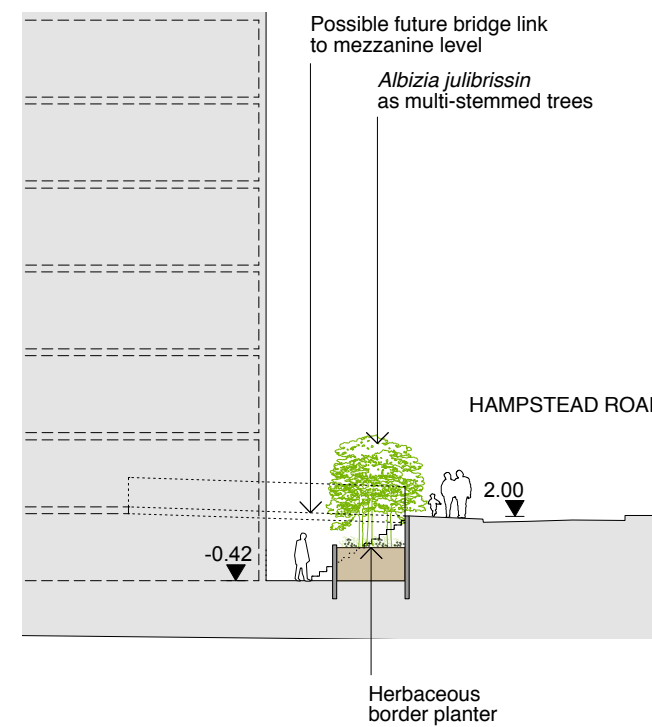




Bench
 Cycle pump
 Cycle stands
 Drinking fountain with pebble rill
 Herbaceous border planter



Shade (perforated metal sheet)
 Bench
 Patterned tree grilles (mixture of patterns and sizes)
 Sarcococca confusa hedge (Winter flowering)
 Stainless steel pergola with Wisteria



Possible future bridge link to mezzanine level
 Albizia julibrissin as multi-stemmed trees
 Herbaceous border planter

DRAFT

East
 Architecture landscape
 urban design
 Unit 8
 49-59 Old Street
 London EC1V 9HX
 T 020 7490 3190
 E mail@east.uk.com
 www.east.uk.com



PROJECT
Regent's Park Estate

CLIENT
 LB Camden

DRAWING STATUS
 Planning

DATE
 May 2015

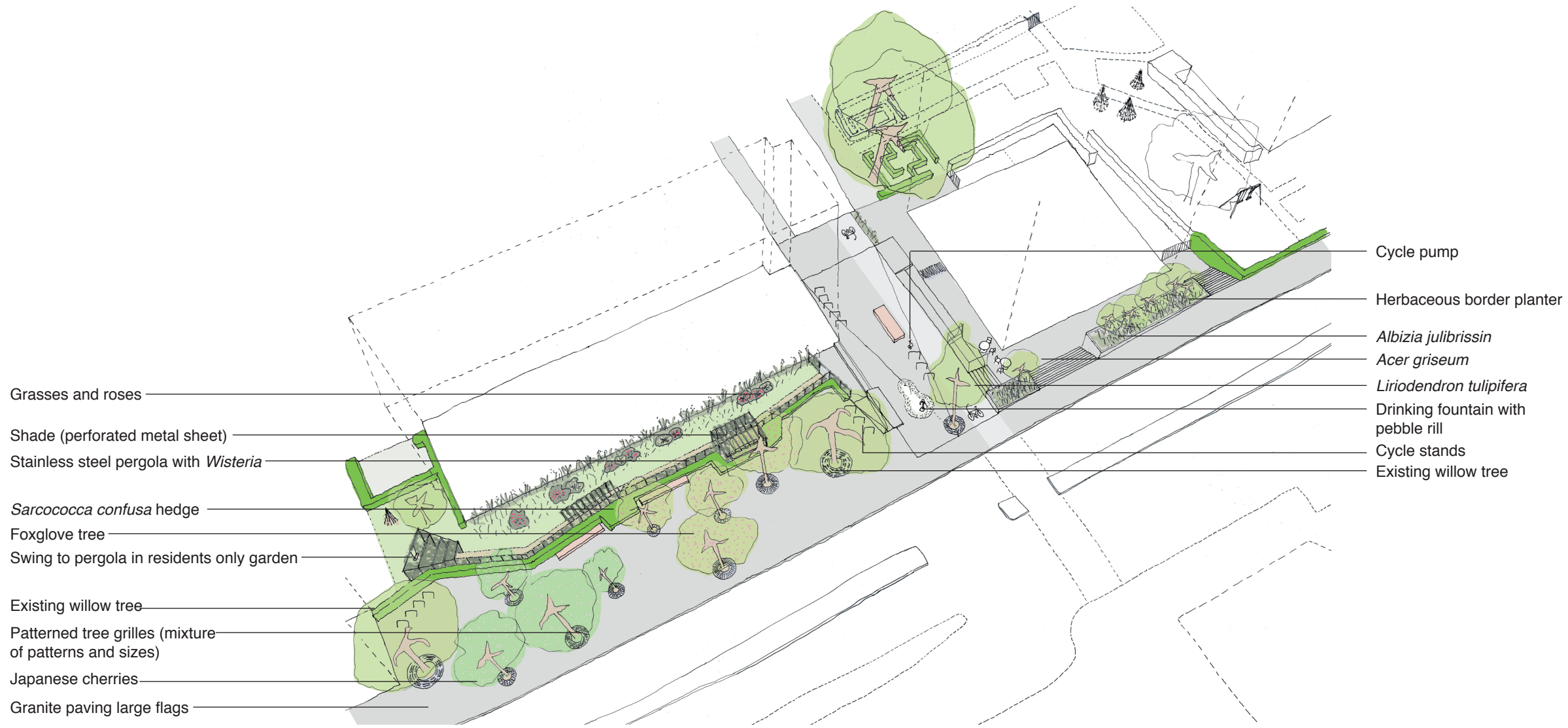
SCALE
 1:200

SIZE
 A2

REV
 -

DRAWING TITLE
 Proposed site sections
 Mitigation site
 The Tarns
 Long term

DRAWING NR
 114 RPE M3 103



- Grasses and roses
- Shade (perforated metal sheet)
- Stainless steel pergola with *Wisteria*
- Sarcococca confusa* hedge
- Foxglove tree
- Swing to pergola in residents only garden
- Existing willow tree
- Patterned tree grilles (mixture of patterns and sizes)
- Japanese cherries
- Granite paving large flags

- Cycle pump
- Herbaceous border planter
- Albizia julibrissin*
- Acer griseum*
- Liriodendron tulipifera*
- Drinking fountain with pebble rill
- Cycle stands
- Existing willow tree

3D view of proposed landscape and public realm

East
 Architecture landscape
 urban design

Unit 8
 49-59 Old Street
 London EC1V 9HX
 T 020 7490 3190
 E mail@east.uk.com

www.east.uk.com

PROJECT
Regent's Park Estate

CLIENT
 LB CAMDEN

DRAWING STATUS	DATE
Planning	May 2015

SCALE	SIZE	REV
varies	A3	-

DRAWING TITLE	DRAWING NR
3D views	114 RPE M3 102

Mitigation site
 The Tarns