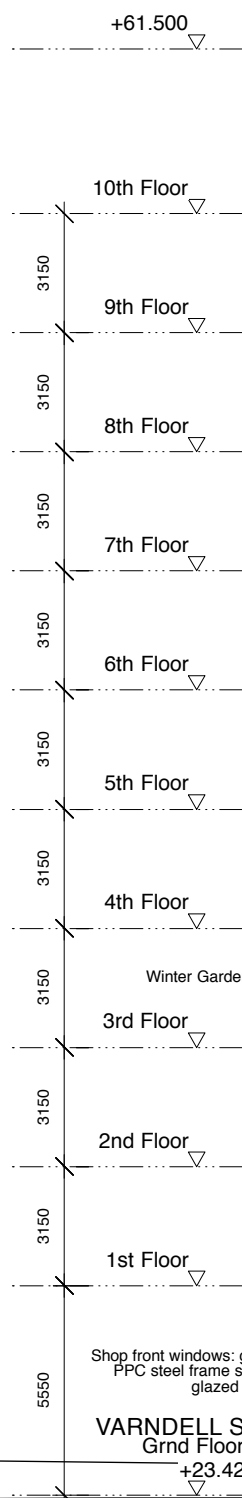


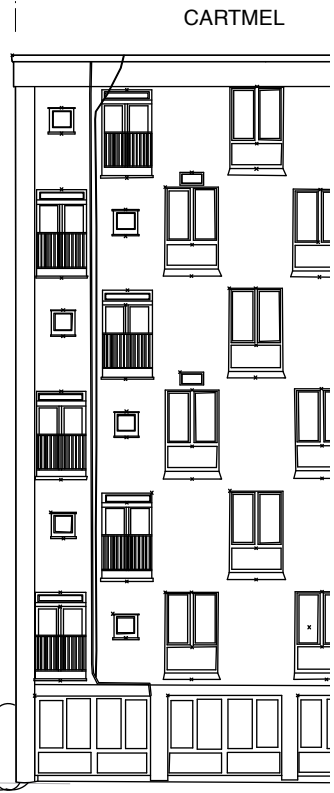
THE TARNs



PLOT 4: NEWLANDS PLOT

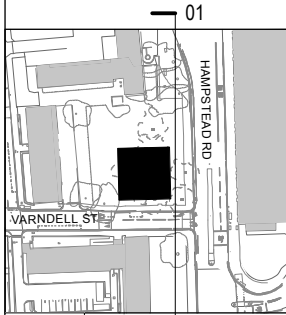


- PPC Aluminium coping
- Brick parapet
- Composite timber & aluminium windows
- Balcony screen: Steel framing supporting PPC Aluminium sheet perforated with bridge holes pattern to achieve free area as specified in acoustic report
- Brick cills to window openings
- Embossed patterned PPC infill panel to side of window
- Stacked soldier coursing brockwork to recessed panel.
- Brick panel recessed full brick.
- Stock Brick
- Frameless openable glass to winter gardens
- Winter Garden
- PPC steel louvred doors



CARTMEL

- Notes:
1. do not scale from this drawing
 2. survey indicative only
 3. proposals are subject to utilities surveys
 4. drawing to be read in conjunction with relevant consultant's information
 5. drawing to be read in conjunction with relevant specifications



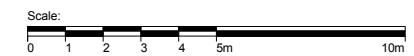
01 Front Elevation - East
1:200

Revisions:
Freedom of Information Act Exempt

PLANNING

MatthewLloydArchitects LLP
 1 The Hangar
 Perseverance Works
 38 Kingsland Road
 London E2 8DD
 T 020 7613 1934
 email: mail@matthewlloyd.co.uk
 www.matthewlloyd.co.uk

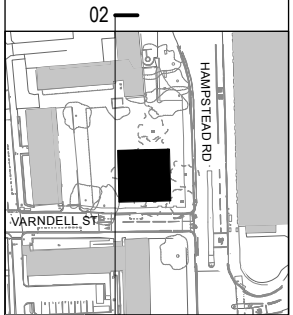
Date:	Scale:	Drawn by:
May 15	1:200@A3 1:100@A1	PP
Project:		
Regents Park Estate Camden		
Drawing title:		
Plot 4: Newlands Plot Proposed Hampstead Road Elevation		
Reference:	Draw. No:	Rev:
RPE	5220	



PLOT 4: NEWLANDS PLOT



- Notes:
1. do not scale from this drawing
 2. survey indicative only
 3. proposals are subject to utilities surveys
 4. drawing to be read in conjunction with relevant consultant's information
 5. drawing to be read in conjunction with relevant specifications



Revisions:
Freedom of Information Act Exempt

PLANNING

MatthewLloydArchitects LLP
 1 The Hangar
 Perseverance Works
 38 Kingsland Road
 London E2 8DD
 T 020 7613 1934
 email: mail@matthewlloyd.co.uk
 www.matthewlloyd.co.uk

Date: May 15 Scale: 1:200@A3 1:100@A1 Drawn by: PP

Project: Regents Park Estate
 Camden

Drawing title:
 Plot 4: Newlands Plot
 Proposed Rear Elevation - West

Reference: RPE Draw. No: 5221 Rev:

02 Rear Elevation - West
 1:200

