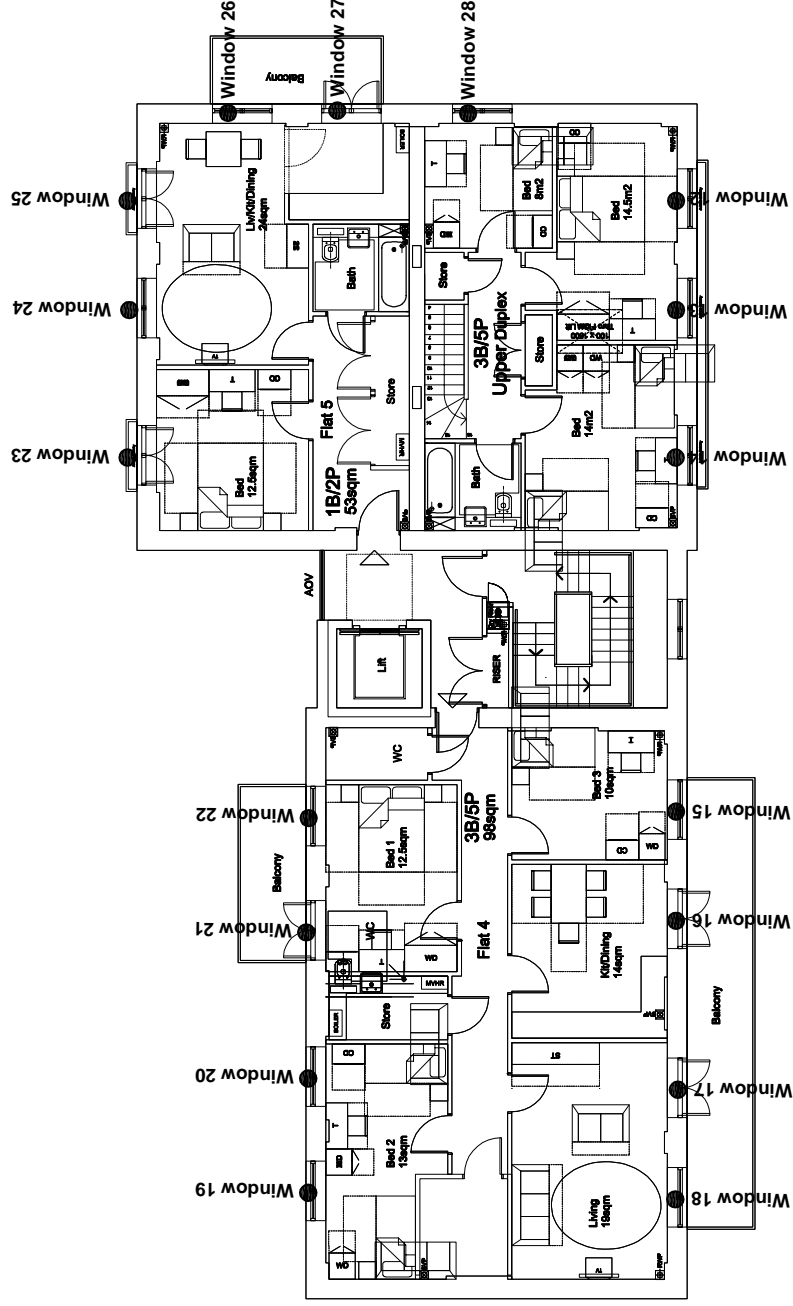


Key:

Window 1 ● Window reference



Project Name: **Regents Park Estate, London NW1 4BX**

Drawing Title: **Window Key**

Scale: **Do not scale**

Drawing No: **3 of 7**

Rev	Date	Details of revision

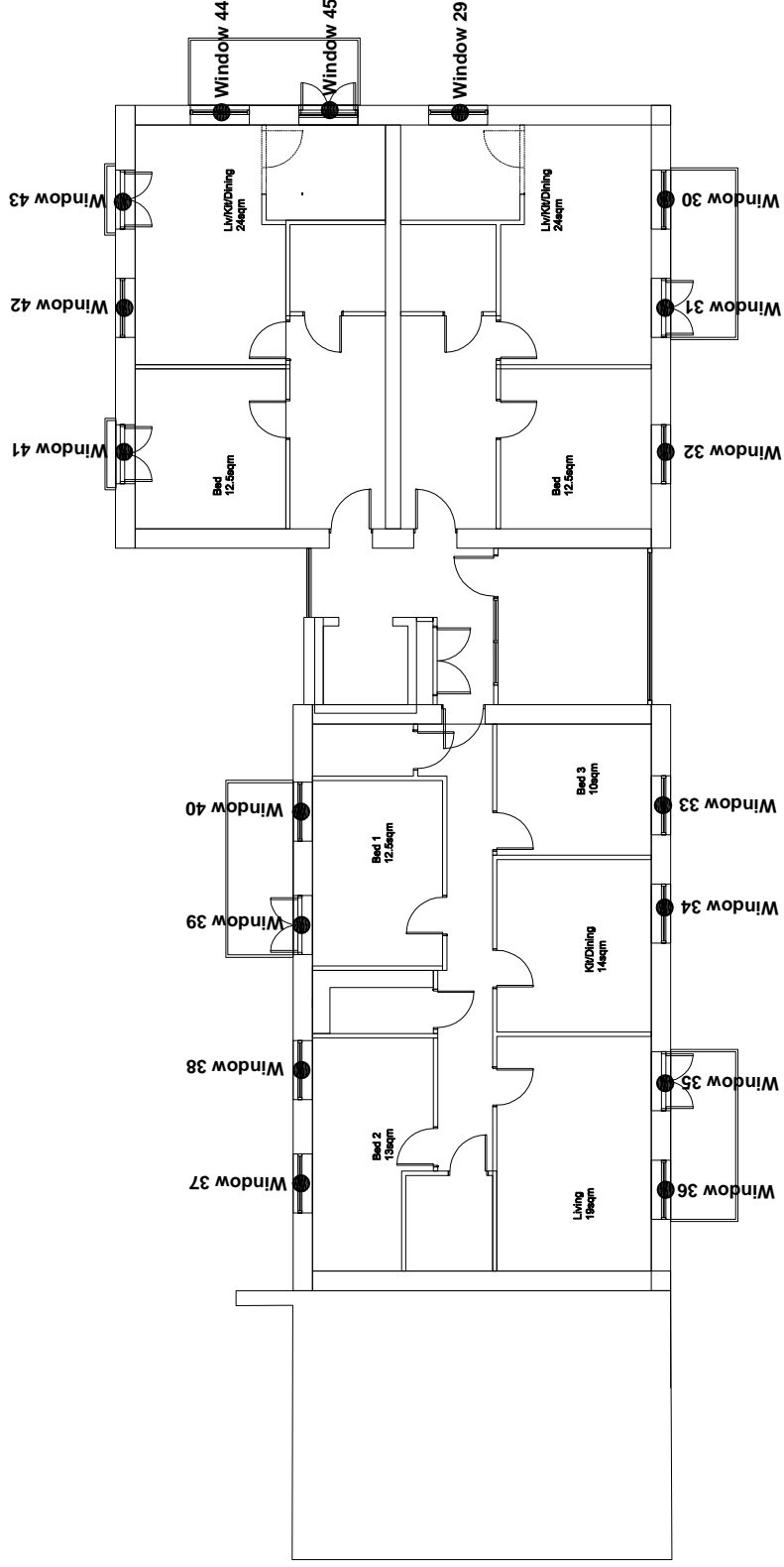
Rev. -



Burley House
15 - 17 High Street
Rayleigh
Essex SS6 7EW
Tel. 0800 197 4836
enquiries@right-of-light.co.uk
www.right-of-light-consulting.com

Key:

Window 1 ● Window reference



Project Name: **Regents Park Estate, London NW1 4BX**

Drawing Title: **Window Key**

Scale: **Do not scale**

Drawing No: **4 of 7**

Rev	Date	Details of revision

Rev. -



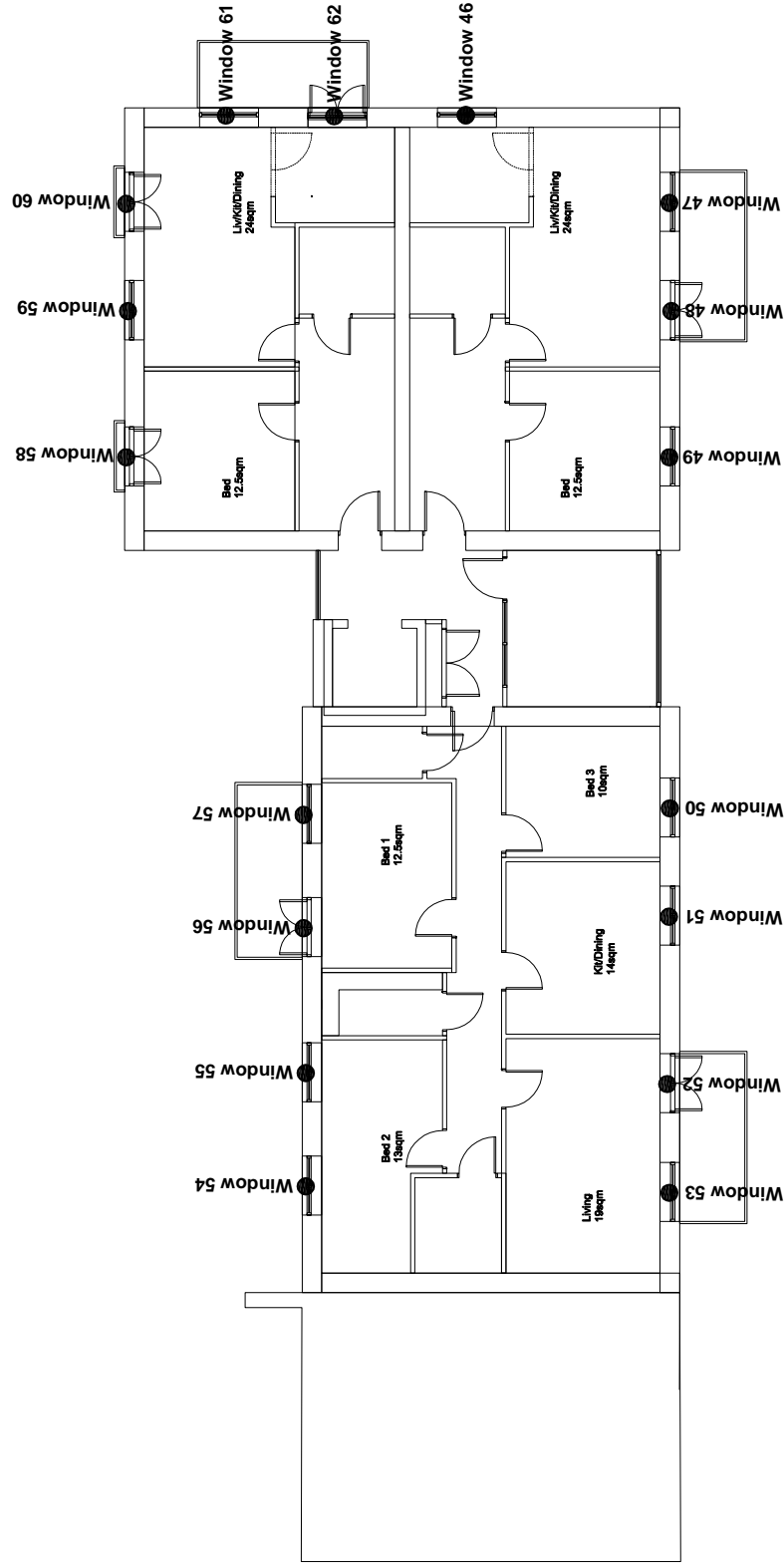
RIGHT OF LIGHT CONSULTING
Chartered Surveyors

Burley House
15 - 17 High Street
Rayleigh
Essex SS6 7EW
Tel. 0800 197 4836

enquiries@right-of-light.co.uk
www.right-of-light-consulting.com

Key:

Window 1 ● Window reference



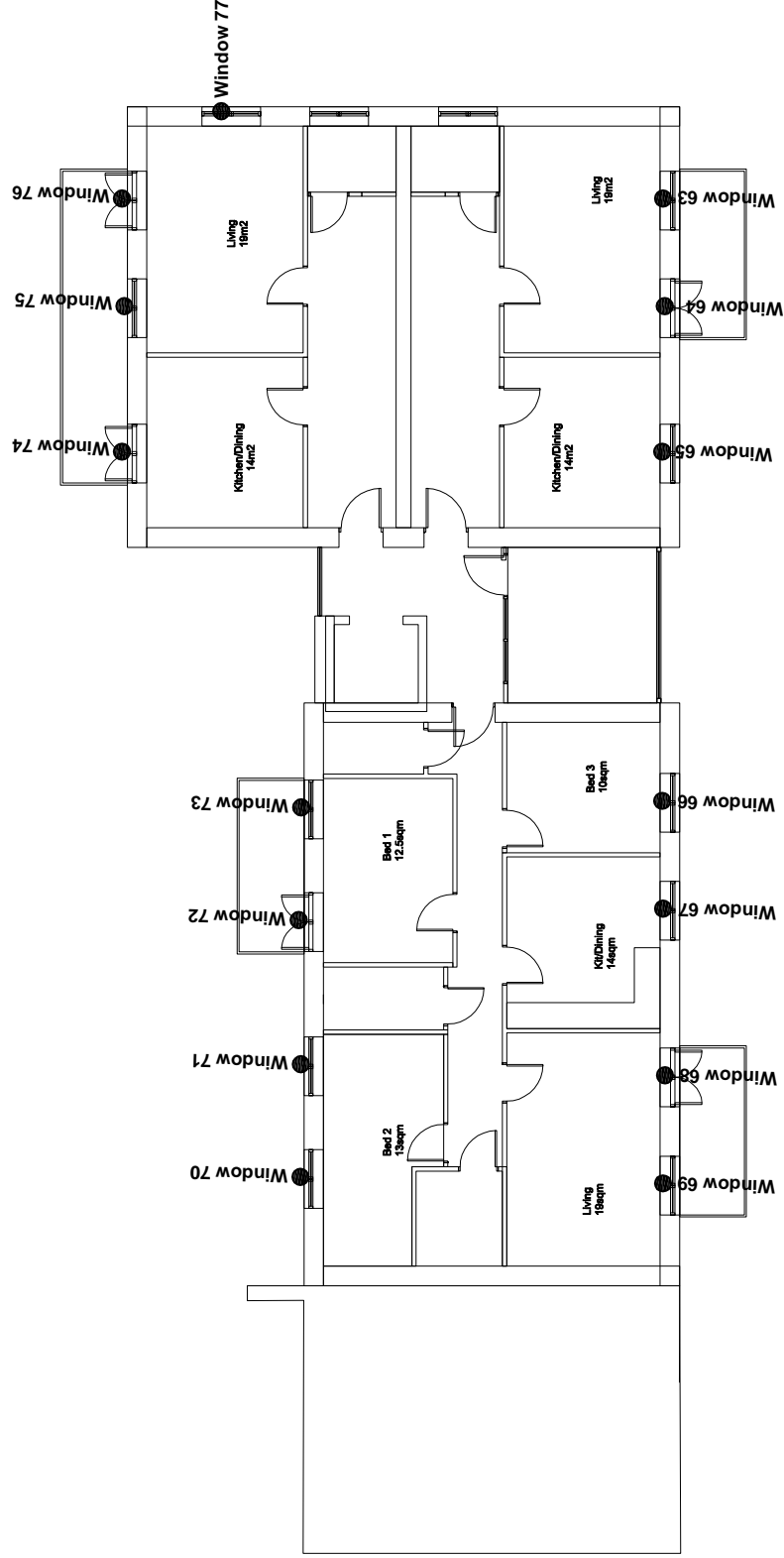
Project Name: Regents Park Estate, London NW1 4BX		
Drawing Title: Window Key		
Scale: Do not scale		
Drawing No: 5 of 7		
Rev	Date	Details of revision



Burley House
15 - 17 High Street
Rayleigh
Essex SS6 7EW
Tel. 0800 197 4836
enquiries@right-of-light.co.uk
www.right-of-light-consulting.com

Key:

Window 1 ● Window reference



Project Name: Regents Park Estate, London NW1 4BX		
Drawing Title: Window Key		
Scale: Do not scale		
Drawing No: 6 of 7	Rev. -	
Rev	Date	Details of revision



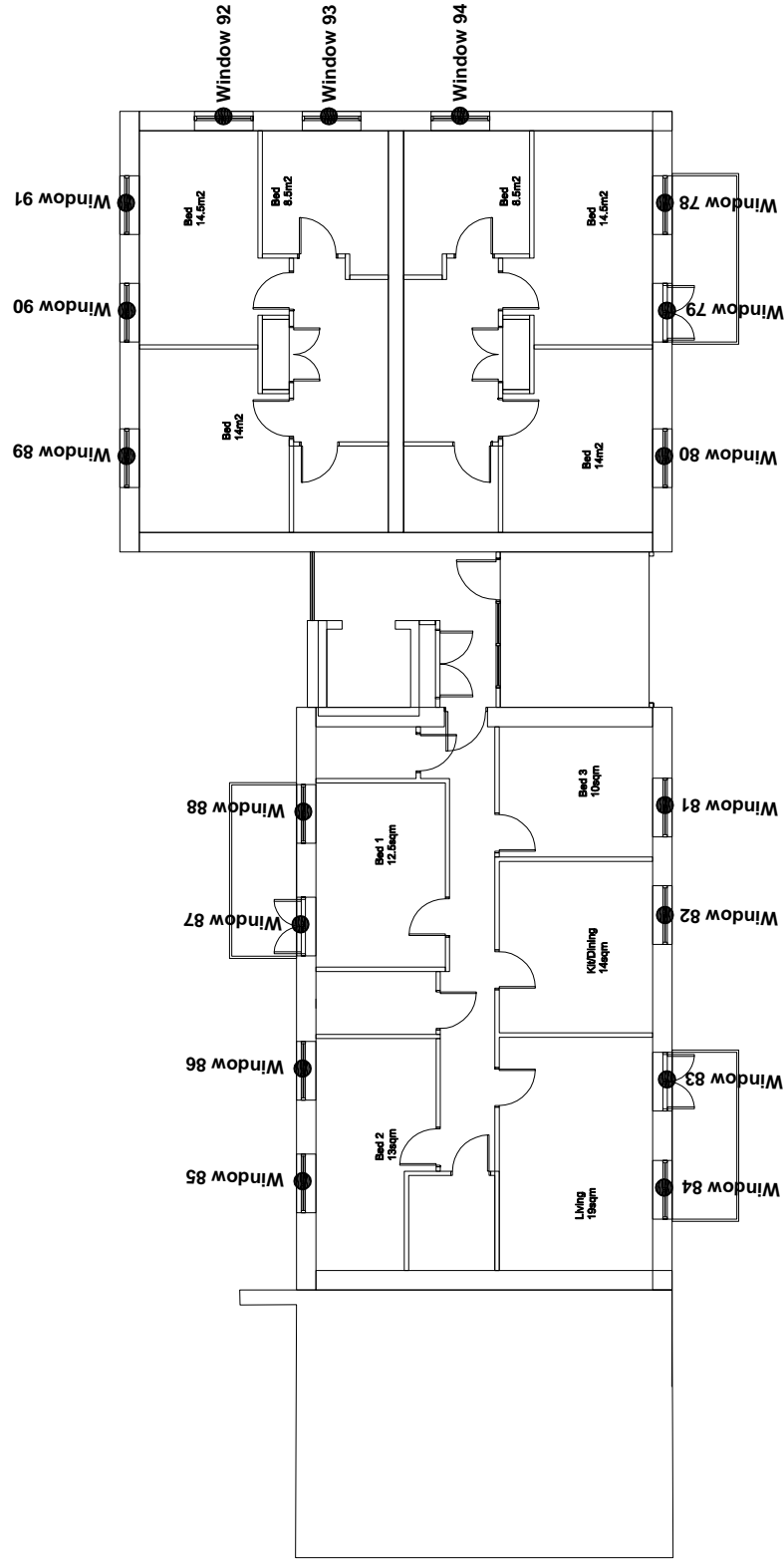
RIGHT OF LIGHT CONSULTING
Chartered Surveyors

Burley House
15 - 17 High Street
Rayleigh
Essex SS6 7EW
Tel. 0800 197 4836

enquiries@right-of-light.co.uk
www.right-of-light-consulting.com

Key:

Window 1 ● Window reference



Project Name: **Regents Park Estate, London NW1 4BX**

Drawing Title: **Window Key**

Scale: **Do not scale**

Drawing No: **7 of 7**

Rev. **-**

Rev. **-**

Date **-**

Details of revision



Burley House
15 - 17 High Street
Rayleigh
Essex SS6 7EW
Tel. 0800 197 4836
enquiries@right-of-light.co.uk
www.right-of-light-consulting.com

APPENDIX 6.2

DAYLIGHT AND SUNLIGHT CALCULATIONS

**Appendix 6.2 - Average Daylight Factor (ADF)
Regents Park Estate, London NW1 4BX**

Reference	Target ADF based on room use		Average Daylight Factor Coefficients					Actual ADF	
	Primary room use	ADF	T	Aw	A	R	Theta	ADF	Result
<u>Proposed Basement Floor</u>									
Window 1 (lower)			0.68	0.52	69.91	0.71	41.4	0.2%	
Window 1 (upper)			0.68	1.52	69.91	0.71	47.6	1.4%	
Total ADF for room	Bedroom	1.0%						1.6%	Pass
Window 2 (lower)			0.68	0.52	69.91	0.71	40.2	0.2%	
Window 2 (upper)			0.68	1.52	69.91	0.71	47.5	1.4%	
Total ADF for room	Bedroom	1.0%						1.6%	Pass
Window 3 (lower)			0.68	0.92	69.91	0.7	32.5	0.2%	
Window 3 (upper)			0.68	1.52	69.91	0.7	39.2	1.1%	
Total ADF for room	Bedroom	1.0%						1.3%	Pass
Window 4 (lower)			0.68	0.92	69.91	0.7	32.1	0.2%	
Window 4 (upper)			0.68	1.52	69.91	0.7	36.6	1.1%	
Total ADF for room	Bedroom	1.0%						1.3%	Pass
<u>Proposed Ground Floor</u>									
Window 5 (lower)			0.68	0.92	84.44	0.68	57.1	0.3%	
Window 5 (upper)			0.68	1.77	84.44	0.68	57.8	1.5%	
Window 6 (lower)			0.68	0.92	84.44	0.68	57.7	0.3%	
Window 6 (upper)			0.68	1.77	84.44	0.68	58.5	1.5%	
Total ADF for room	Living Room	1.5%						3.6%	Pass
Window 7 (lower)			0.68	0.92	65.48	0.7	58.9	0.4%	
Window 7 (upper)			0.68	1.77	65.48	0.7	60.5	2.2%	
Total ADF for room	Kitchen/Dining	2.0%						2.6%	Pass
Window 8 (lower)			0.68	0.92	86.17	0.7	51.1	0.5%	
Window 8 (upper)			0.68	1.77	86.17	0.7	37.4	1.0%	
Total ADF for room	Living/Dining	1.5%						1.5%	Pass
Window 9 (lower)			0.68	0.92	86.17	0.7	51.9	0.5%	
Window 9 (upper)			0.68	1.77	86.17	0.7	38.4	1.0%	
Total ADF for room	Living/Dining	1.5%						1.5%	Pass
Window 10 (lower)			0.68	0.92	53.6	0.7	49.7	0.4%	
Window 10 (upper)			0.68	1.77	53.6	0.7	51.4	2.3%	

**Appendix 6.2 - Average Daylight Factor (ADF)
Regents Park Estate, London NW1 4BX**

Reference	Target ADF based on room use		Average Daylight Factor Coefficients					Actual ADF	
	Primary room use	ADF	T	Aw	A	R	Theta	ADF	Result
Total ADF for room		n/a						2.7%	n/a
Window 11 (lower)			0.68	0.92	53.6	0.7	37.4	0.4%	
Window 11 (upper)			0.68	1.77	53.6	0.7	25.0	1.1%	
Total ADF for room		n/a						1.5%	n/a
<u>Proposed First Floor</u>									
Window 12 (lower)			0.68	0.92	73.22	0.68	54.9	0.4%	
Window 12 (upper)			0.68	1.52	73.22	0.68	43.7	1.2%	
Window 13 (lower)			0.68	0.92	73.22	0.68	55.5	0.4%	
Window 13 (upper)			0.68	1.52	73.22	0.68	44.3	1.2%	
Total ADF for room		1.0%						3.1%	Pass
Window 14 (lower)			0.68	0.92	68.36	0.7	63.1	0.4%	
Window 14 (upper)			0.68	1.52	68.36	0.7	64.8	1.9%	
Total ADF for room		1.0%						2.3%	Pass
Window 15 (lower)			0.68	0.92	55.85	0.7	65.2	0.6%	
Window 15 (upper)			0.68	1.52	55.85	0.7	67.0	2.5%	
Total ADF for room		1.0%						3.1%	Pass
Window 16 (lower)			0.68	0.92	67.59	0.7	64.6	0.5%	
Window 16 (upper)			0.68	1.52	67.59	0.7	66.3	2.0%	
Total ADF for room		2.0%						2.5%	Pass
Window 17 (lower)			0.68	0.92	85.27	0.68	57.5	0.3%	
Window 17 (upper)			0.68	1.52	85.27	0.68	46.3	1.1%	
Window 18 (lower)			0.68	0.92	85.27	0.68	57.7	0.3%	
Window 18 (upper)			0.68	1.52	85.27	0.68	46.5	1.1%	
Total ADF for room		1.5%						2.8%	Pass
Window 19 (lower)			0.68	0.92	69.17	0.68	53.5	0.4%	
Window 19 (upper)			0.68	1.52	69.17	0.68	54.7	1.5%	
Window 20 (lower)			0.68	0.92	69.17	0.68	54.1	0.4%	
Window 20 (upper)			0.68	1.52	69.17	0.68	55.2	1.6%	
Total ADF for room		1.0%						3.8%	Pass
Window 21 (lower)			0.68	0.92	63.64	0.68	45.1	0.3%	
Window 21 (upper)			0.68	1.52	63.64	0.68	34.5	1.0%	

**Appendix 6.2 - Average Daylight Factor (ADF)
Regents Park Estate, London NW1 4BX**

Reference	Target ADF based on room use		Average Daylight Factor Coefficients						Actual ADF	
	Primary room use	ADF	T	Aw	A	R	Theta	ADF	Result	
Window 22 (lower)			0.68	0.92	63.64	0.68	40.8	0.3%		
Window 22 (upper)			0.68	1.52	63.64	0.68	28.4	0.9%		
Total ADF for room	Bedroom	1.0%						2.5%	Pass	
Window 23 (lower)			0.68	0.92	62.95	0.7	47.8	0.4%		
Window 23 (upper)			0.68	1.52	62.95	0.7	48.3	1.6%		
Total ADF for room	Bedroom	1.0%						2.0%	Pass	
Window 24 (lower)			0.68	0.92	109.78	0.66	48.1	0.2%		
Window 24 (upper)			0.68	1.52	109.78	0.66	48.9	0.8%		
Window 25 (lower)			0.68	0.92	109.78	0.66	49.0	0.2%		
Window 25 (upper)			0.68	1.5	109.78	0.66	49.5	0.8%		
Window 26 (lower)			0.68	0.92	109.78	0.66	58.7	0.2%		
Window 26 (upper)			0.68	1.5	109.78	0.66	47.9	0.8%		
Window 27 (lower)			0.68	0.92	109.78	0.66	57.1	0.2%		
Window 27 (upper)			0.68	1.5	109.78	0.66	46.9	0.8%		
Total ADF for room	Living/Kitchen/Dining	2.0%						4.1%	Pass	
Window 28 (lower)			0.68	0.92	46.82	0.7	61.3	0.6%		
Window 28 (upper)			0.68	1.5	46.82	0.7	63.4	2.7%		
Total ADF for room	Bedroom	1.0%						3.3%	Pass	
<u>Proposed Second Floor</u>										
Window 29 (lower)			0.68	0.92	113.3	0.68	68.9	0.3%		
Window 29 (upper)			0.68	1.5	113.3	0.68	72.1	1.2%		
Window 30 (lower)			0.68	0.92	113.3	0.68	60.4	0.2%		
Window 30 (upper)			0.68	1.52	113.3	0.68	49.4	0.8%		
Window 31 (lower)			0.68	0.92	113.3	0.68	60.9	0.2%		
Window 31 (upper)			0.68	1.52	113.3	0.68	49.8	0.8%		
Total ADF for room	Living/Kitchen/Dining	2.0%						3.6%	Pass	
Window 32 (lower)			0.68	0.92	62.95	0.7	68.6	0.6%		
Window 32 (upper)			0.68	1.5	62.95	0.7	70.3	2.2%		
Total ADF for room	Bedroom	1.0%						2.8%	Pass	
Window 33 (lower)			0.68	0.92	55.85	0.7	70.8	0.6%		
Window 33 (upper)			0.68	1.52	55.85	0.7	72.7	2.7%		
Total ADF for room	Bedroom	1.0%						3.3%	Pass	

**Appendix 6.2 - Average Daylight Factor (ADF)
Regents Park Estate, London NW1 4BX**

Reference	Target ADF based on room use		Average Daylight Factor Coefficients						Actual ADF	
	Primary room use	ADF	T	Aw	A	R	Theta	ADF	Result	
Window 34 (lower)	Kitchen/Dining	2.0%	0.68	0.92	67.59	0.7	70.1	0.5%	Pass	
Window 34 (upper)			0.68	1.52	67.59	0.7	71.9	2.2%		
Total ADF for room										
Window 35 (lower)	Living Room	1.5%	0.68	0.92	85.27	0.68	62.7	0.4%	Pass	
Window 35 (upper)			0.68	1.52	85.27	0.68	51.5	1.2%		
Window 36 (lower)			0.68	0.92	85.27	0.68	63.0	0.4%		
Window 36 (upper)			0.68	1.52	85.27	0.68	51.8	1.2%		
Total ADF for room										
Window 37 (lower)	Bedroom	1.0%	0.68	0.92	69.17	0.68	57.0	0.4%	Pass	
Window 37 (upper)			0.68	1.52	69.17	0.68	58.4	1.6%		
Window 38 (lower)			0.68	0.92	69.17	0.68	57.7	0.4%		
Window 38 (upper)			0.68	1.52	69.17	0.68	58.9	1.7%		
Total ADF for room										
Window 39 (lower)	Bedroom	1.0%	0.68	0.92	63.64	0.68	48.5	0.4%	Pass	
Window 39 (upper)			0.68	1.52	63.64	0.68	36.9	1.1%		
Window 40 (lower)			0.68	0.92	63.64	0.68	44.4	0.3%		
Window 40 (upper)			0.68	1.52	63.64	0.68	31.3	0.9%		
Total ADF for room										
Window 41 (lower)	Bedroom	1.0%	0.68	0.92	62.95	0.7	49.9	0.4%	Pass	
Window 41 (upper)			0.68	1.52	62.95	0.7	49.6	1.6%		
Total ADF for room										
Window 42 (lower)	Living/Kitchen/Dining	2.0%	0.68	0.92	113.3	0.67	49.8	0.2%	Pass	
Window 42 (upper)			0.68	1.52	113.3	0.67	49.3	0.8%		
Window 43 (lower)			0.68	0.92	113.3	0.67	51.3	0.2%		
Window 43 (upper)			0.68	1.5	113.3	0.67	51.0	0.8%		
Window 44 (lower)			0.68	0.92	113.3	0.67	64.4	0.2%		
Window 44 (upper)	0.68	1.5	113.3	0.67	53.5	0.9%				
Window 45 (lower)	Living/Kitchen/Dining	2.0%	0.68	0.92	113.3	0.67	63.2	0.2%	Pass	
Window 45 (upper)			0.68	1.5	113.3	0.67	53.1	0.9%		
Total ADF for room										
<u>Proposed Third Floor</u>										

**Appendix 6.2 - Average Daylight Factor (ADF)
Regents Park Estate, London NW1 4BX**

Reference	Target ADF based on room use		Average Daylight Factor Coefficients						Actual ADF	
	Primary room use	ADF	T	Aw	A	R	Theta	ADF	Result	
Window 46 (lower)			0.68	0.92	113.3	0.68	79.0	0.3%		
Window 46 (upper)			0.68	1.5	113.3	0.68	81.8	1.4%		
Window 47 (lower)			0.68	0.92	113.3	0.68	65.6	0.3%		
Window 47 (upper)			0.68	1.52	113.3	0.68	53.4	0.9%		
Window 48 (lower)			0.68	0.92	113.3	0.68	65.9	0.3%		
Window 48 (upper)			0.68	1.52	113.3	0.68	53.6	0.9%		
Total ADF for room	Living/Kitchen/Dining	2.0%							4.1% Pass	
Window 49 (lower)			0.68	0.92	62.95	0.7	74.5	0.6%		
Window 49 (upper)			0.68	1.5	62.95	0.7	76.3	2.4%		
Total ADF for room	Bedroom	1.0%							3.0% Pass	
Window 50 (lower)			0.68	0.92	55.85	0.7	76.8	0.7%		
Window 50 (upper)			0.68	1.52	55.85	0.7	78.8	2.9%		
Total ADF for room	Bedroom	1.0%							3.6% Pass	
Window 51 (lower)			0.68	0.92	67.59	0.7	76.0	0.6%		
Window 51 (upper)			0.68	1.52	67.59	0.7	78.0	2.4%		
Total ADF for room	Kitchen/Dining	2.0%							3.0% Pass	
Window 52 (lower)			0.68	0.92	85.27	0.68	67.5	0.4%		
Window 52 (upper)			0.68	1.52	85.27	0.68	55.0	1.2%		
Window 53 (lower)			0.68	0.92	85.27	0.68	67.7	0.4%		
Window 53 (upper)			0.68	1.52	85.27	0.68	55.3	1.3%		
Total ADF for room	Living Room	1.5%							3.2% Pass	
Window 54 (lower)			0.68	0.92	69.17	0.68	62.0	0.4%		
Window 54 (upper)			0.68	1.52	69.17	0.68	64.9	1.8%		
Window 55 (lower)			0.68	0.92	69.17	0.68	61.9	0.4%		
Window 55 (upper)			0.68	1.52	69.17	0.68	63.4	1.8%		
Total ADF for room	Bedroom	1.0%							4.5% Pass	
Window 56 (lower)			0.68	0.92	63.64	0.68	51.8	0.4%		
Window 56 (upper)			0.68	1.52	63.64	0.68	39.5	1.2%		
Window 57 (lower)			0.68	0.92	63.64	0.68	47.9	0.4%		
Window 57 (upper)			0.68	1.52	63.64	0.68	34.5	1.0%		
Total ADF for room	Bedroom	1.0%							2.9% Pass	
Window 58 (lower)			0.68	0.92	62.95	0.7	45.6	0.4%		

**Appendix 6.2 - Average Daylight Factor (ADF)
Regents Park Estate, London NW1 4BX**

Reference	Target ADF based on room use		Average Daylight Factor Coefficients						Actual ADF	
	Primary room use	ADF	T	Aw	A	R	Theta	ADF	Result	
Window 58 (upper)	Bedroom	1.0%	0.68	1.52	62.95	0.7	32.6	1.1%	Pass	
Total ADF for room			0.68	0.92	113.3	0.67	42.3	0.2%		
Window 59 (lower)	Bedroom	1.0%	0.68	1.52	113.3	0.67	25.0	0.4%	0.2%	
Total ADF for room			0.68	0.92	113.3	0.67	47.1	0.2%		
Window 60 (upper)	Bedroom	1.0%	0.68	1.5	113.3	0.67	34.5	0.6%	0.3%	
Total ADF for room			0.68	0.92	113.3	0.67	80.1	0.3%		
Window 61 (lower)	Bedroom	1.0%	0.68	1.5	113.3	0.67	81.9	1.3%	0.3%	
Total ADF for room			0.68	0.92	113.3	0.67	79.8	0.3%		
Window 62 (upper)	Living/Kitchen/Dining	2.0%	0.68	1.5	113.3	0.67	81.9	1.3%	Pass	
Total ADF for room			0.68	0.92	113.3	0.67	81.9	4.6%		
Proposed Fourth Floor										
Window 63 (lower)	Living Room	1.5%	0.68	0.92	84.44	0.68	70.8	0.4%	0.4%	
Total ADF for room			0.68	1.5	84.44	0.68	58.1	1.3%		
Window 64 (upper)	Living Room	1.5%	0.68	0.92	84.44	0.68	70.9	0.4%	0.4%	
Total ADF for room			0.68	1.52	84.44	0.68	58.1	1.3%		
Window 65 (lower)	Kitchen/Dining	2.0%	0.68	0.54	68.22	0.71	81.2	0.4%	2.5%	
Total ADF for room			0.68	1.5	68.22	0.71	83.0	2.9%		
Window 66 (upper)	Kitchen/Dining	2.0%	0.68	0.52	55.85	0.71	83.2	0.4%	3.1%	
Total ADF for room			0.68	1.52	55.85	0.71	84.8	3.5%		
Window 67 (lower)	Bedroom	1.0%	0.68	0.52	67.59	0.71	82.7	0.4%	2.6%	
Total ADF for room			0.68	1.52	67.59	0.71	84.4	3.0%		
Window 68 (upper)	Bedroom	1.0%	0.68	0.92	85.27	0.68	72.4	0.4%	1.3%	
Total ADF for room			0.68	1.52	85.27	0.68	59.3	0.4%		
Window 69 (lower)	Bedroom	1.0%	0.68	0.92	85.27	0.68	72.7	0.4%	1.3%	
Total ADF for room			0.68	1.52	85.27	0.68	59.5	3.4%		

**Appendix 6.2 - Average Daylight Factor (ADF)
Regents Park Estate, London NW1 4BX**

Reference	Target ADF based on room use		Average Daylight Factor Coefficients						Actual ADF	
	Primary room use	ADF	T	Aw	A	R	Theta	ADF	Result	
Window 70 (lower)			0.68	0.52	69.17	0.69	69.5	0.3%		
Window 70 (upper)			0.68	1.52	69.17	0.69	70.5	2.0%		
Window 71 (lower)			0.68	0.52	69.17	0.69	66.8	0.3%		
Window 71 (upper)			0.68	1.52	69.17	0.69	68.2	2.0%		
Total ADF for room	Bedroom	1.0%						4.6%	Pass	
Window 72 (lower)			0.68	0.92	63.64	0.68	55.4	0.4%		
Window 72 (upper)			0.68	1.52	63.64	0.68	43.3	1.3%		
Window 73 (lower)			0.68	0.92	63.64	0.68	52.2	0.4%		
Window 73 (upper)			0.68	1.52	63.64	0.68	39.6	1.2%		
Total ADF for room	Bedroom	1.0%						3.3%	Pass	
Window 74 (lower)			0.68	0.92	68.22	0.7	59.4	0.4%		
Window 74 (upper)			0.68	1.52	68.22	0.7	60.7	1.8%		
Total ADF for room	Kitchen/Dining	2.0%						2.2%	Pass	
Window 75 (lower)			0.68	0.92	84.44	0.66	59.9	0.3%		
Window 75 (upper)			0.68	1.52	84.44	0.66	61.2	1.3%		
Window 76 (lower)			0.68	0.92	84.44	0.66	60.7	0.3%		
Window 76 (upper)			0.68	1.5	84.44	0.66	61.9	1.3%		
Window 77 (lower)			0.68	0.54	84.44	0.66	85.1	0.3%		
Window 77 (upper)			0.68	1.5	84.44	0.66	86.0	1.9%		
Total ADF for room	Living Room	1.5%						5.4%	Pass	
<u>Proposed Fifth Floor</u>										
Window 78 (lower)			0.68	0.92	73.22	0.68	87.0	0.6%		
Window 78 (upper)			0.68	1.5	73.22	0.68	88.1	2.3%		
Window 79 (lower)			0.68	0.92	73.22	0.68	87.1	0.6%		
Window 79 (upper)			0.68	1.52	73.22	0.68	88.2	2.3%		
Total ADF for room	Bedroom	1.0%						5.7%	Pass	
Window 80 (lower)			0.68	0.54	68.36	0.71	87.5	0.4%		
Window 80 (upper)			0.68	1.5	68.36	0.71	88.2	2.6%		
Total ADF for room	Bedroom	1.0%						3.0%	Pass	
Window 81 (lower)			0.68	0.52	55.85	0.71	88.0	0.4%		
Window 81 (upper)			0.68	1.52	55.85	0.71	88.4	3.3%		
Total ADF for room	Bedroom	1.0%						3.7%	Pass	

**Appendix 6.2 - Average Daylight Factor (ADF)
Regents Park Estate, London NW1 4BX**

Reference	Target ADF based on room use		Average Daylight Factor Coefficients						Actual ADF	
	Primary room use	ADF	T	Aw	A	R	Theta	ADF	Result	
Window 82 (lower)	Kitchen/Dining	2.0%	0.68	0.52	67.59	0.71	88.1	0.4%	Pass	
Window 82 (upper)			0.68	1.52	67.59	0.71	88.5	2.7%		
Total ADF for room										
Window 83 (lower)	Living Room	1.5%	0.68	0.92	85.27	0.68	88.2	0.5%	Pass	
Window 83 (upper)			0.68	1.52	85.27	0.68	88.6	2.0%		
Window 84 (lower)			0.68	0.92	85.27	0.68	88.3	0.5%		
Window 84 (upper)			0.68	1.52	85.27	0.68	88.6	2.0%		
Total ADF for room										
Window 85 (lower)	Bedroom	1.0%	0.68	0.52	69.17	0.69	73.3	0.3%	Pass	
Window 85 (upper)			0.68	1.52	69.17	0.69	74.3	2.1%		
Window 86 (lower)			0.68	0.52	69.17	0.69	71.8	0.3%		
Window 86 (upper)			0.68	1.52	69.17	0.69	72.9	2.1%		
Total ADF for room										
Window 87 (lower)	Bedroom	1.0%	0.68	0.92	63.64	0.68	69.4	0.5%	Pass	
Window 87 (upper)			0.68	1.52	63.64	0.68	71.0	2.1%		
Window 88 (lower)			0.68	0.92	63.64	0.68	66.8	0.5%		
Window 88 (upper)			0.68	1.52	63.64	0.68	69.0	2.1%		
Total ADF for room										
Window 89 (lower)	Bedroom	1.0%	0.68	0.52	68.36	0.71	63.9	0.3%	Pass	
Window 89 (upper)			0.68	1.52	68.36	0.71	65.2	2.0%		
Total ADF for room										
Window 90 (lower)	Bedroom	1.0%	0.68	0.52	73.22	0.68	64.2	0.2%	Pass	
Window 90 (upper)			0.68	1.52	73.22	0.68	65.5	1.7%		
Window 91 (lower)			0.68	0.52	73.22	0.68	64.9	0.2%		
Window 91 (upper)			0.68	1.52	73.22	0.68	66.2	1.7%		
Window 92 (lower)	Bedroom	1.0%	0.68	0.05	73.22	0.68	87.3	0.0%	Pass	
Window 92 (upper)			0.68	1.5	73.22	0.68	87.3	2.2%		
Total ADF for room										
Window 93 (lower)	Bedroom	1.0%	0.68	0.05	50.28	0.72	87.6	0.0%	Pass	
Window 93 (upper)			0.68	1.5	50.28	0.72	87.7	3.7%		
Total ADF for room										

**Appendix 6.2 - Average Daylight Factor (ADF)
Regents Park Estate, London NW1 4BX**

Reference
Window 94 (lower)
Window 94 (upper)
Total ADF for room

Target ADF based on room use	
Primary room use	ADF
Bedroom	1.0%

Average Daylight Factor Coefficients					
T	Aw	A	R	Theta	Theta
0.68	0.05	50.28	0.72	87.9	87.9
0.68	1.5	50.28	0.72	87.9	87.9

Actual ADF	
ADF	Result
0.0%	
3.7%	
3.7%	Pass

n/a = kitchen under 13m2 not considered habitable and therefore daylight sunlight targets are not applicable.

**Appendix 6.2 - Room Depth Calculation
Regents Park Estate, London NW1 4BX**

Room	Room Depth Coefficients				Room Depth Calculation		Result
	L	W	H	Rb	L/W + L/H	2/l-Rb	
<u>Proposed Basement Floor</u>							
Window 1	3.9	3.8	2.2	0.71	2.8 <=	6.8	Pass
Window 2	3.9	3.8	2.2	0.71	2.8 <=	6.8	Pass
Window 3	3.9	3.8	2.2	0.7	2.8 <=	6.71	Pass
Window 4	3.9	3.8	2.2	0.7	2.8 <=	6.71	Pass
<u>Proposed Ground Floor</u>							
Window 5	3.6	5.3	2.5	0.68	2.12 <=	6.2	Pass
Window 6	3.6	5.3	2.5	0.68	2.12 <=	6.2	Pass
Window 7	3.4	4.0	2.5	0.7	2.21 <=	6.66	Pass
Window 8	4.9	4.0	2.5	0.7	3.19 <=	6.63	Pass
Window 9	4.9	4.0	2.5	0.7	3.19 <=	6.63	Pass
Window 10	2.8	3.6	2.5	0.7	1.9 <=	6.66	Pass
Window 11	2.8	3.6	2.5	0.7	1.9 <=	6.66	Pass
<u>Proposed First Floor</u>							
Window 12	3.5	5.0	2.2	0.68	2.29 <=	6.34	Pass
Window 13	3.5	5.0	2.2	0.68	2.29 <=	6.34	Pass
Window 14	3.5	4.2	2.2	0.7	2.42 <=	6.75	Pass
Window 15	3.6	3.0	2.2	0.7	2.84 <=	6.73	Pass
Window 16	3.6	4.0	2.2	0.7	2.54 <=	6.71	Pass
Window 17	3.6	5.4	2.2	0.68	2.3 <=	6.28	Pass
Window 18	3.6	5.4	2.2	0.68	2.3 <=	6.28	Pass
Window 19	2.8	5.4	2.2	0.68	1.79 <=	6.33	Pass
Window 20	2.8	5.4	2.2	0.68	1.79 <=	6.33	Pass
Window 21	3.0	4.3	2.2	0.68	2.06 <=	6.19	Pass
Window 22	3.0	4.3	2.2	0.68	2.06 <=	6.19	Pass
Window 23	3.5	3.7	2.3	0.7	2.47 <=	6.72	Pass
Window 24	5.8	5.5	2.3	0.66	3.58 <=	5.92	Pass
Window 25	5.8	5.5	2.2	0.66	3.69 <=	5.92	Pass
Window 26	5.5	5.8	2.2	0.66	3.45 <=	5.92	Pass
Window 27	5.5	5.8	2.2	0.66	3.45 <=	5.92	Pass
Window 28	2.8	2.9	2.2	0.7	2.24 <=	6.72	Pass
<u>Proposed Second Floor</u>							

**Appendix 6.2 - Room Depth Calculation
Regents Park Estate, London NW1 4BX**

Room	Room Depth Coefficients				Room Depth Calculation		Result
	L	W	H	Rb	L/W + L/H	2/1-Rb	
Window 29	5.5	5.8	2.2	0.68	3.45 <=	6.27	Pass
Window 30	5.8	5.5	2.2	0.68	3.69 <=	6.27	Pass
Window 31	5.8	5.5	2.2	0.68	3.69 <=	6.27	Pass
Window 32	3.5	3.7	2.2	0.7	2.54 <=	6.72	Pass
Window 33	3.6	3.0	2.2	0.7	2.84 <=	6.73	Pass
Window 34	3.6	4.0	2.2	0.7	2.54 <=	6.71	Pass
Window 35	3.6	5.4	2.2	0.68	2.3 <=	6.28	Pass
Window 36	3.6	5.4	2.2	0.68	2.3 <=	6.28	Pass
Window 37	2.8	5.4	2.2	0.68	1.79 <=	6.33	Pass
Window 38	2.8	5.4	2.2	0.68	1.79 <=	6.33	Pass
Window 39	3.0	4.3	2.2	0.68	2.06 <=	6.19	Pass
Window 40	3.0	4.3	2.2	0.68	2.06 <=	6.19	Pass
Window 41	3.5	3.7	2.3	0.7	2.47 <=	6.72	Pass
Window 42	5.8	5.5	2.3	0.67	3.58 <=	6.0	Pass
Window 43	5.8	5.5	2.2	0.67	3.69 <=	6.0	Pass
Window 44	5.5	5.8	2.2	0.67	3.45 <=	6.0	Pass
Window 45	5.5	5.8	2.2	0.67	3.45 <=	6.0	Pass
<u>Proposed Third Floor</u>							
Window 46	5.5	5.8	2.2	0.68	3.45 <=	6.27	Pass
Window 47	5.8	5.5	2.2	0.68	3.69 <=	6.27	Pass
Window 48	5.8	5.5	2.2	0.68	3.69 <=	6.27	Pass
Window 49	3.5	3.7	2.2	0.7	2.54 <=	6.72	Pass
Window 50	3.6	3.0	2.2	0.7	2.84 <=	6.73	Pass
Window 51	3.6	4.0	2.2	0.7	2.54 <=	6.71	Pass
Window 52	3.6	5.4	2.2	0.68	2.3 <=	6.28	Pass
Window 53	3.6	5.4	2.2	0.68	2.3 <=	6.28	Pass
Window 54	2.8	5.4	2.2	0.68	1.79 <=	6.33	Pass
Window 55	2.8	5.4	2.2	0.68	1.79 <=	6.33	Pass
Window 56	3.0	4.3	2.2	0.68	2.06 <=	6.19	Pass
Window 57	3.0	4.3	2.2	0.68	2.06 <=	6.19	Pass
Window 58	3.5	3.7	2.3	0.7	2.47 <=	6.72	Pass
Window 59	5.8	5.5	2.3	0.67	3.58 <=	6.0	Pass
Window 60	5.8	5.5	2.2	0.67	3.69 <=	6.0	Pass
Window 61	5.5	5.8	2.2	0.67	3.45 <=	6.0	Pass

**Appendix 6.2 - Room Depth Calculation
Regents Park Estate, London NW1 4BX**

Room	Room Depth Coefficients				Room Depth Calculation		Result
	L	W	H	Rb	L/W + L/H	2/H-Rb	
Window 62	5.5	5.8	2.2	0.67	3.45 <=	6.0	Pass
<u>Proposed Fourth Floor</u>							
Window 63	3.6	5.3	2.2	0.68	2.32 <=	6.28	Pass
Window 64	3.6	5.3	2.3	0.68	2.24 <=	6.28	Pass
Window 65	3.6	4.0	2.2	0.71	2.54 <=	6.8	Pass
Window 66	3.6	3.0	2.2	0.71	2.84 <=	6.84	Pass
Window 67	3.6	4.0	2.2	0.71	2.54 <=	6.81	Pass
Window 68	3.6	5.4	2.2	0.68	2.3 <=	6.28	Pass
Window 69	3.6	5.4	2.2	0.68	2.3 <=	6.28	Pass
Window 70	2.8	5.4	2.2	0.69	1.79 <=	6.5	Pass
Window 71	2.8	5.4	2.2	0.69	1.79 <=	6.5	Pass
Window 72	3.0	4.3	2.2	0.68	2.06 <=	6.19	Pass
Window 73	3.0	4.3	2.2	0.68	2.06 <=	6.19	Pass
Window 74	3.6	4.0	2.3	0.7	2.47 <=	6.71	Pass
Window 75	3.6	5.3	2.3	0.66	2.24 <=	5.97	Pass
Window 76	3.6	5.3	2.2	0.66	2.32 <=	5.97	Pass
Window 77	5.3	3.6	2.2	0.66	3.88 <=	5.97	Pass
<u>Proposed Fifth Floor</u>							
Window 78	3.5	5.0	2.2	0.68	2.29 <=	6.34	Pass
Window 79	3.5	5.0	2.3	0.68	2.22 <=	6.34	Pass
Window 80	3.5	4.2	2.2	0.71	2.42 <=	6.85	Pass
Window 81	3.6	3.0	2.2	0.71	2.84 <=	6.84	Pass
Window 82	3.6	4.0	2.2	0.71	2.54 <=	6.81	Pass
Window 83	3.6	5.4	2.2	0.68	2.3 <=	6.28	Pass
Window 84	3.6	5.4	2.2	0.68	2.3 <=	6.28	Pass
Window 85	2.8	5.4	2.2	0.69	1.79 <=	6.5	Pass
Window 86	2.8	5.4	2.2	0.69	1.79 <=	6.5	Pass
Window 87	3.0	4.3	2.2	0.68	2.06 <=	6.19	Pass
Window 88	3.0	4.3	2.2	0.68	2.06 <=	6.19	Pass
Window 89	3.5	4.2	2.3	0.71	2.36 <=	6.85	Pass
Window 90	3.5	5.0	2.3	0.68	2.22 <=	6.2	Pass
Window 91	3.5	5.0	2.3	0.68	2.22 <=	6.2	Pass
Window 92	5.0	3.5	2.2	0.68	3.7 <=	6.2	Pass

**Appendix 6.2 - Room Depth Calculation
Regents Park Estate, London NW1 4BX**

Room
Window 93
Window 94

Room Depth Coefficients			
L	W	H	Rb
3.3	2.9	2.2	0.72
3.3	2.9	2.2	0.72

Room Depth Calculation	
L/W + L/H	<=
2.64	<=
2.64	<=

Result
Pass
Pass

Appendix 6.2 - Sunlight to Windows
Regents Park Estate, London NW1 4BX

Reference	Use Class	Annual Probable Sunlight Hours	
		Total	Winter
<u>Proposed Ground Floor</u>			
Window 5	Living Room	15%	0%
Window 6	Living Room	16%	1%
Window 8	Living/Dining	16%	1%
Window 9	Living/Dining	7%	0%
<u>Proposed First Floor</u>			
Window 17	Living Room	18%	1%
Window 18	Living Room	13%	2%
Window 24	Living/Kitchen/Dining	11%	3%
Window 25	Living/Kitchen/Dining	13%	3%
Window 26	Living/Kitchen/Dining	28%	16%
Window 27	Living/Kitchen/Dining	25%	13%
<u>Proposed Second Floor</u>			
Window 29	Living/Kitchen/Dining	51%	19%
Window 30	Living/Kitchen/Dining	22%	3%
Window 31	Living/Kitchen/Dining	15%	3%
Window 35	Living Room	24%	3%
Window 36	Living Room	16%	3%
Window 42	Living/Kitchen/Dining	13%	3%
Window 43	Living/Kitchen/Dining	14%	3%
Window 44	Living/Kitchen/Dining	34%	22%
Window 45	Living/Kitchen/Dining	32%	20%
<u>Proposed Third Floor</u>			
Window 46	Living/Kitchen/Dining	57%	24%
Window 47	Living/Kitchen/Dining	28%	5%
Window 48	Living/Kitchen/Dining	20%	5%
Window 52	Living Room	27%	4%
Window 53	Living Room	20%	5%
Window 59	Living/Kitchen/Dining	5%	4%
Window 60	Living/Kitchen/Dining	16%	4%
Window 61	Living/Kitchen/Dining	57%	24%
Window 62	Living/Kitchen/Dining	58%	25%

**Appendix 6.2 - Sunlight to Windows
Regents Park Estate, London NW1 4BX**

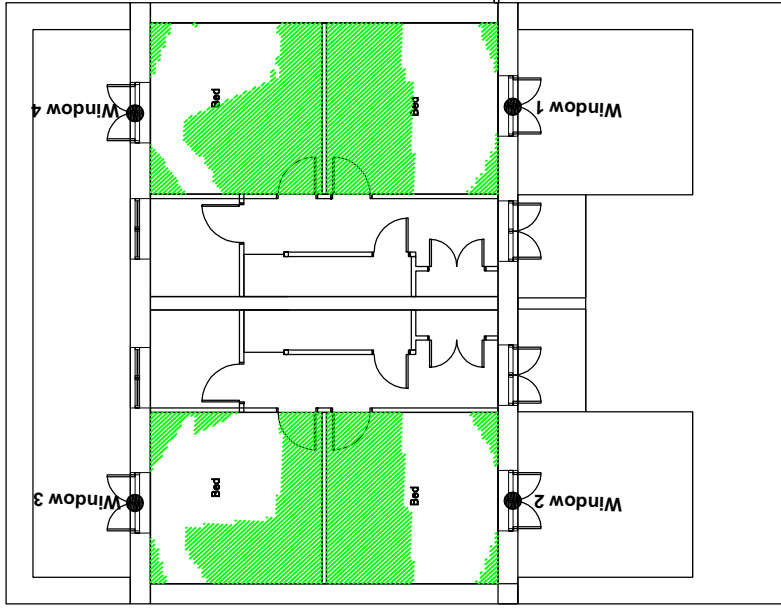
Reference	Use Class	Annual Probable Sunlight Hours	
		Total	Winter
<u>Proposed Fourth Floor</u>			
Window 63	Living Room	29%	5%
Window 64	Living Room	20%	5%
Window 68	Living Room	30%	6%
Window 69	Living Room	22%	6%
Window 75	Living Room	17%	4%
Window 76	Living Room	19%	4%
Window 77	Living Room	59%	26%
<u>Proposed Fifth Floor</u>			
Window 83	Living Room	32%	7%
Window 84	Living Room	32%	7%

APPENDIX 6.3

NO SKY LINE CONTOURS

Appendix 6.3 No Sky Line Contours

Proposed Basement



Key:

● 1 Window reference

▨ Area receives no direct sky light (applied to habitable rooms)

□ Area does receive direct sky light.

▬ Light aperture.

Project Name: **Regents Park Estate, London NW1 4BX**

Drawing Title: **No Sky Line Contours**

Scale: **Do not scale**

Drawing No: **1 of 7**

Rev. -

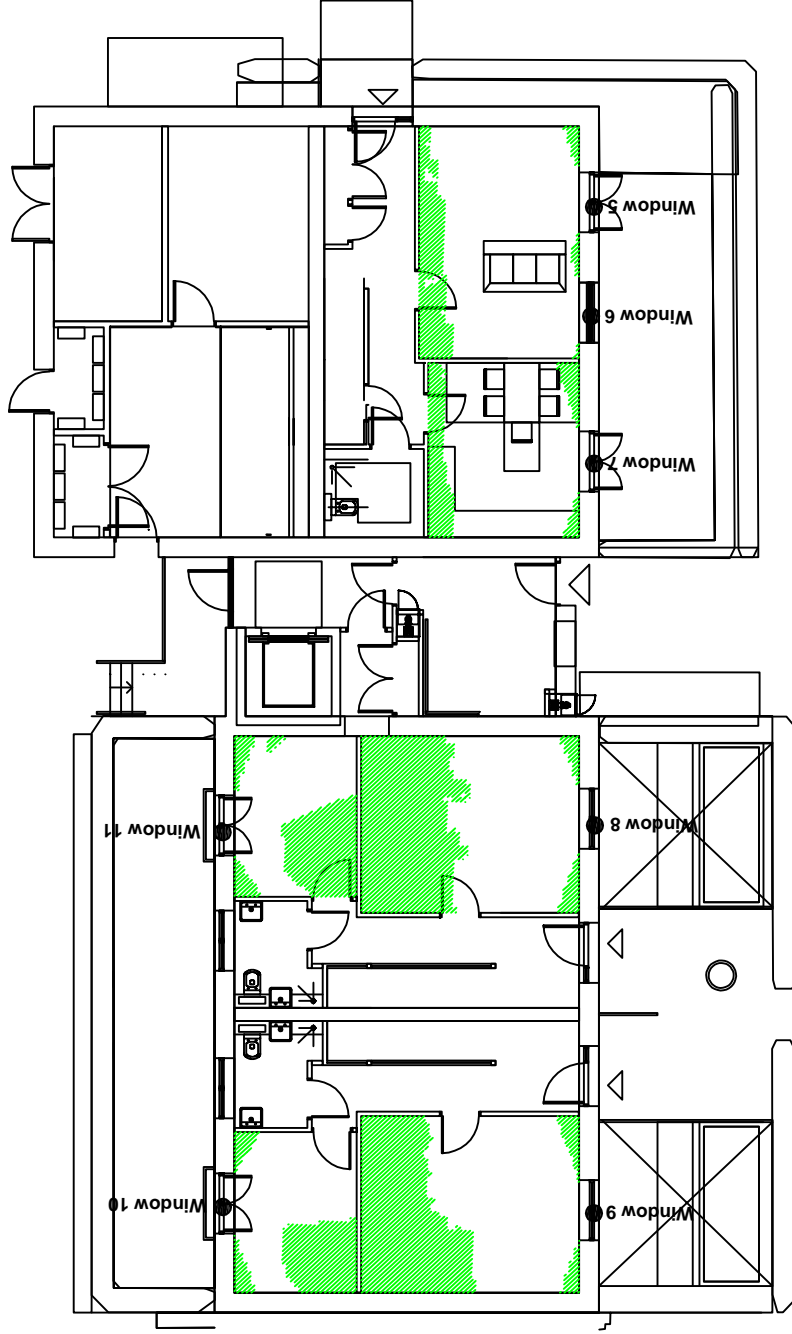
Rev. Date Details of revision



RIGHT OF LIGHT CONSULTING
Chartered Surveyors
Burley House
15 - 17 High Street
Rayleigh
Essex SS6 7EW
Tel. 0800 197 4836
enquiries@right-of-light.co.uk
www.right-of-light-consulting.com

Appendix 6.3 No Sky Line Contours

Proposed Ground Floor



Key:

● 1 Window reference

▨ Area receives no direct sky light (applied to habitable rooms)

□ Area does receive direct sky light.

▬ Light aperture.

Project Name: **Regents Park Estate, London NW1 4BX**

Drawing Title: **No Sky Line Contours**

Scale: **Do not scale**

Drawing No: **2 of 7** Rev. -

Rev Date Details of revision



Burley House
15 - 17 High Street
Rayleigh
Essex SS6 7EW

Tel. 0800 197 4836

enquiries@right-of-light.co.uk
www.right-of-light-consulting.com

Appendix 6.3 No Sky Line Contours

Proposed First Floor

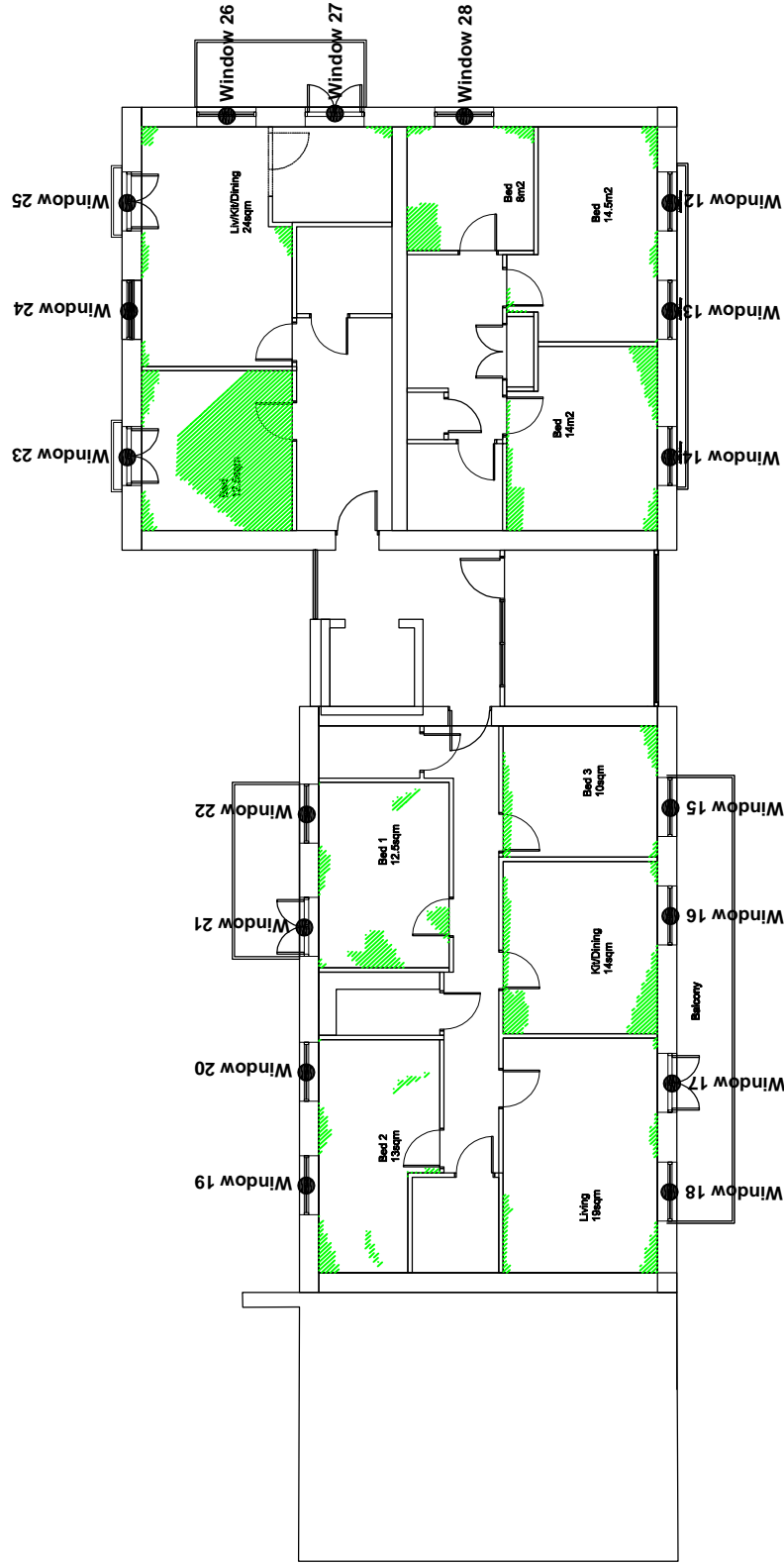
Key:

● 1 Window reference

▨ Area receives no direct sky light (applied to habitable rooms)

□ Area does receive direct sky light.

▭ Light aperture.



Project Name: **Regents Park Estate, London NW1 4BX**

Drawing Title: **No Sky Line Contours**

Scale: **Do not scale**

Drawing No: **3 of 7**

Rev. -

Rev	Date	Details of revision



Burley House
15 - 17 High Street
Rayleigh
Essex SS6 7EW

Tel. 0800 197 4836

enquiries@right-of-light.co.uk
www.right-of-light-consulting.com

Appendix 6.3 No Sky Line Contours

Proposed Second Floor

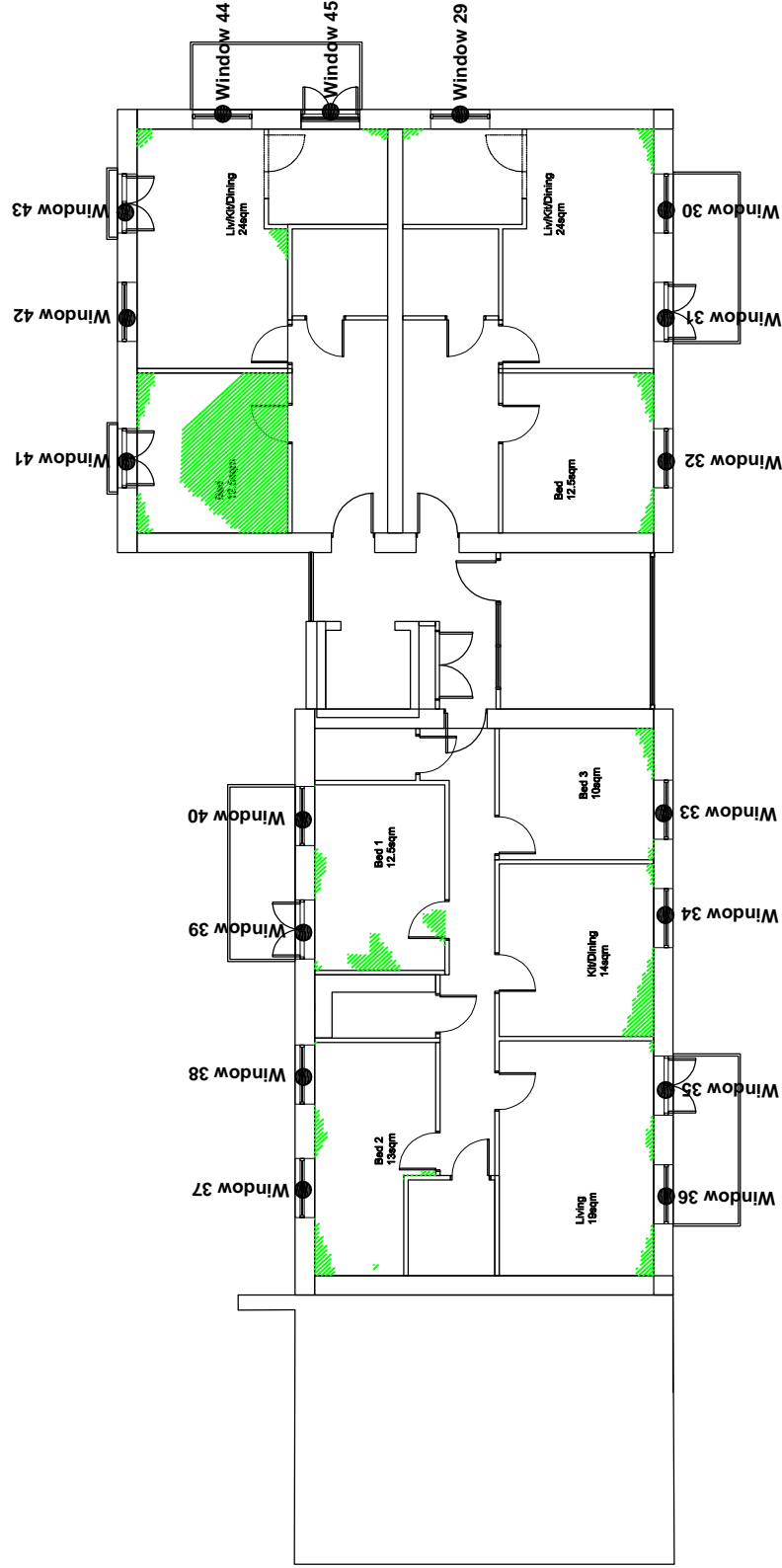
Key:

● 1 Window reference

▨ Area receives no direct sky light (applied to habitable rooms)

□ Area does receive direct sky light.

▬ Light aperture.



Project Name: **Regents Park Estate, London NW1 4BX**

Drawing Title: **No Sky Line Contours**

Scale: **Do not scale**

Drawing No: **4 of 7**

Rev. Date

Details of revision

Rev. -



Burley House
15 - 17 High Street
Rayleigh
Essex SS6 7EW

Tel. 0800 197 4836

enquiries@right-of-light.co.uk
www.right-of-light-consulting.com

Appendix 6.3 No Sky Line Contours

Proposed Third Floor

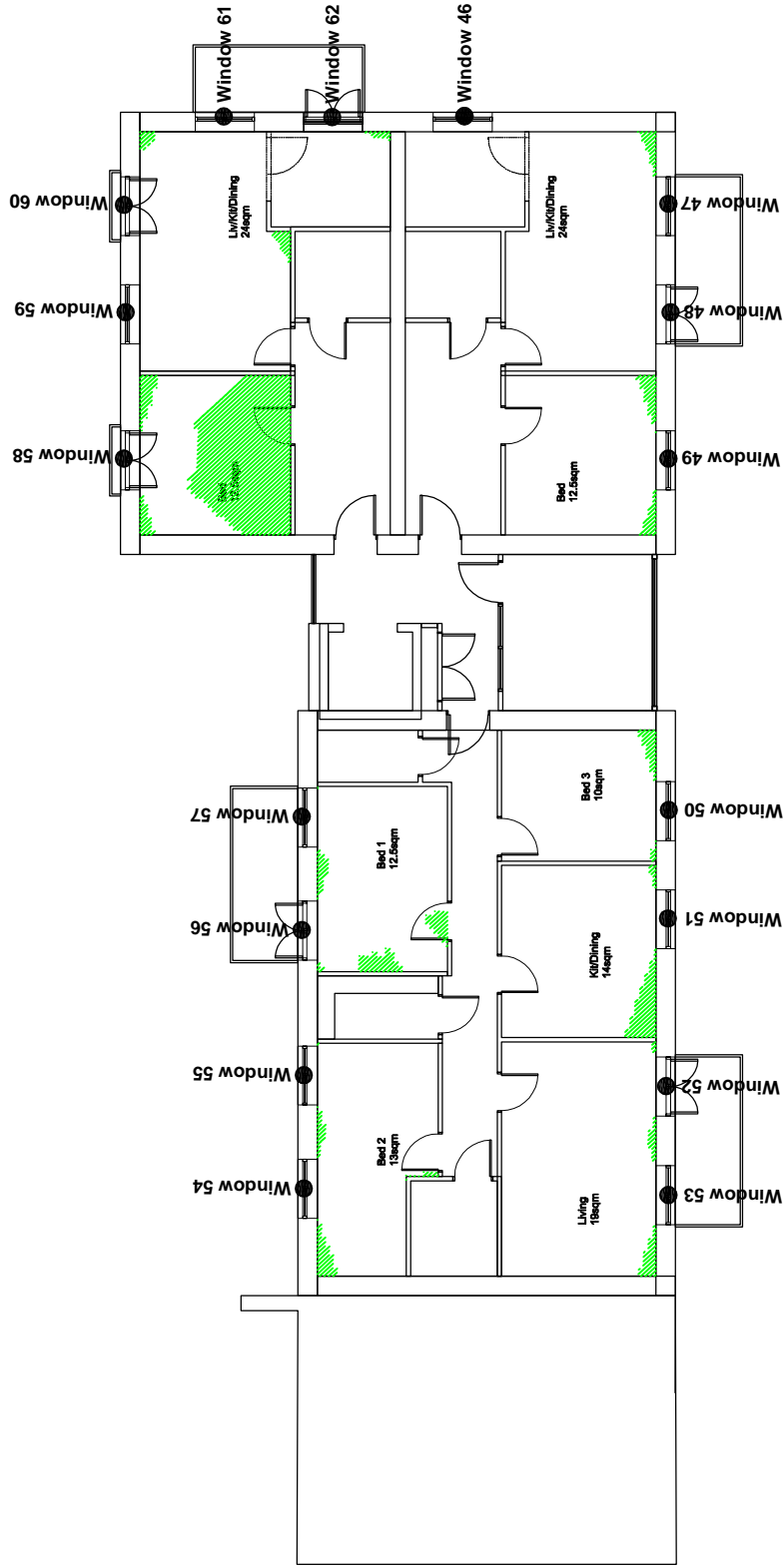
Key:

● 1 Window reference

▨ Area receives no direct sky light (applied to habitable rooms)

□ Area does receive direct sky light.

▬ Light aperture.



Project Name: **Regents Park Estate, London NW1 4BX**

Drawing Title: **No Sky Line Contours**

Scale: **Do not scale**

Drawing No: **5 of 7**

Rev. -

Rev	Date	Details of revision



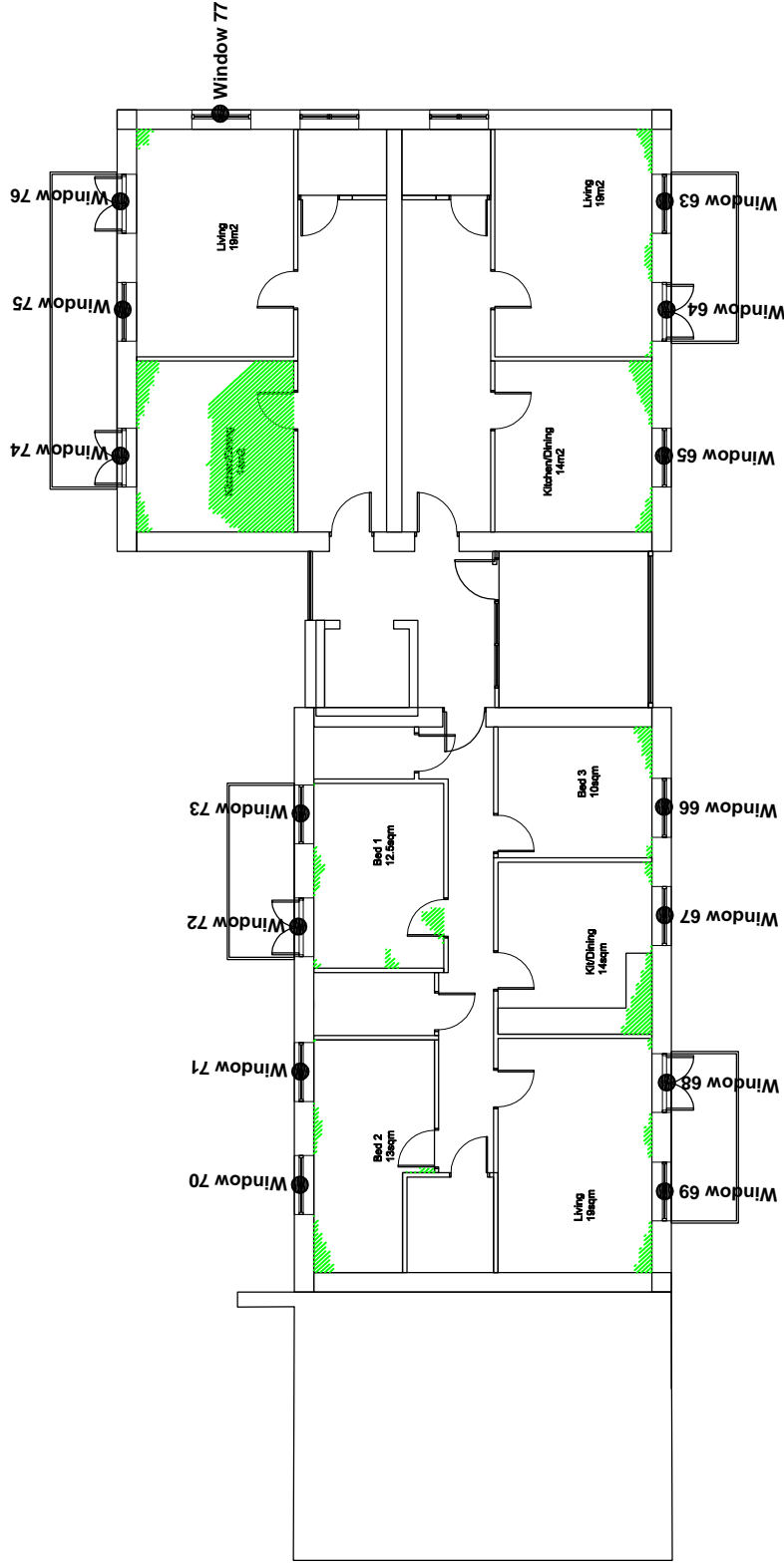
Burley House
15 - 17 High Street
Rayleigh
Essex SS6 7EW

Tel. 0800 197 4836

enquiries@right-of-light.co.uk
www.right-of-light-consulting.com

Appendix 6.3 No Sky Line Contours

Proposed Fourth Floor



Key:

● 1 Window reference

▨ Area receives no direct sky light (applied to habitable rooms)

□ Area does receive direct sky light.

▬ Light aperture.

Project Name: **Regents Park Estate, London NW1 4BX**

Drawing Title: **No Sky Line Contours**

Scale: **Do not scale**

Drawing No: **6 of 7**

Rev. -

Rev

Date

Details of revision



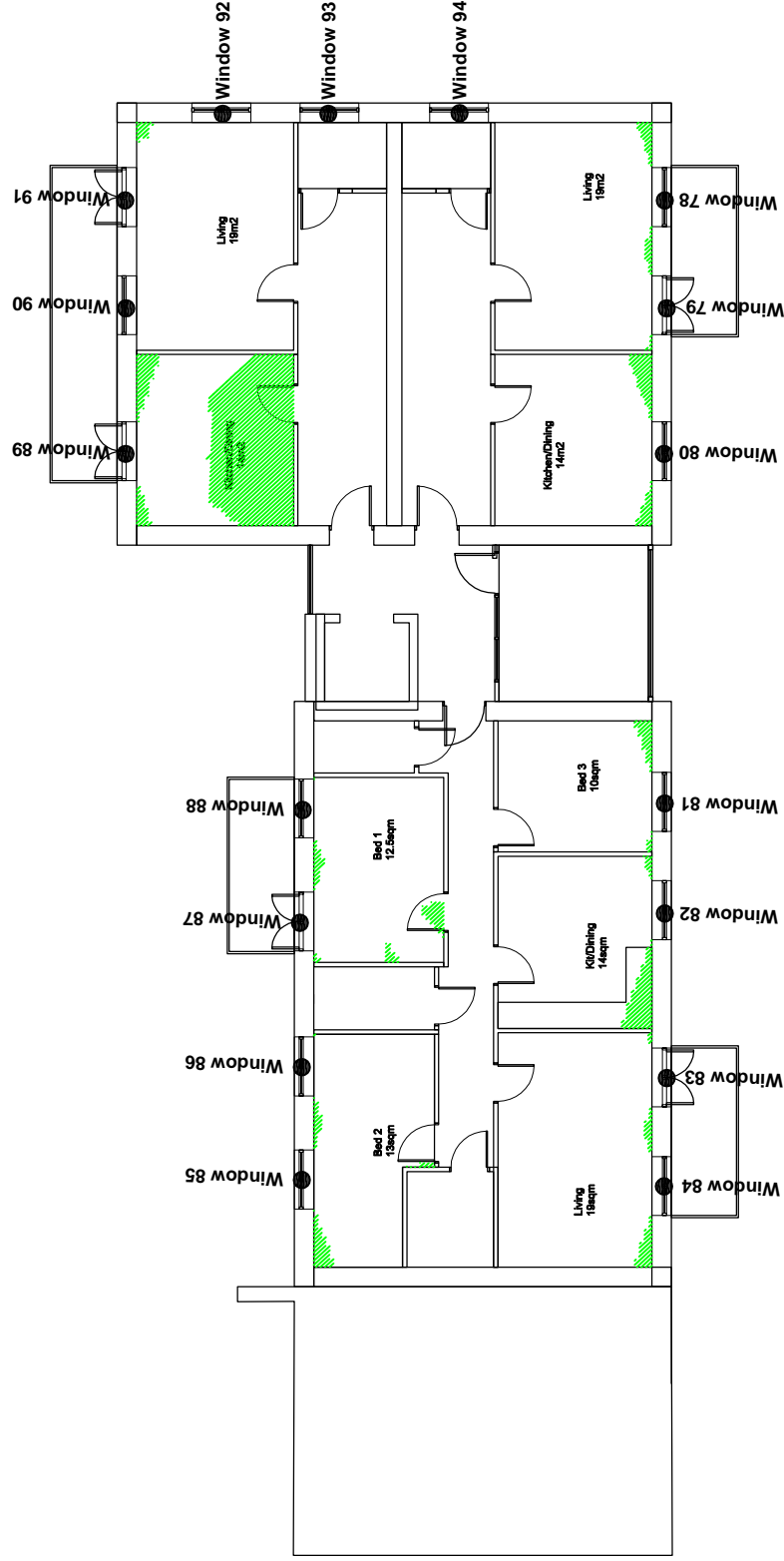
Burley House
15 - 17 High Street
Rayleigh
Essex SS6 7EW

Tel. 0800 197 4836

enquiries@right-of-light.co.uk
www.right-of-light-consulting.com

Appendix 6.3 No Sky Line Contours

Proposed Fifth Floor



Key:

● 1 Window reference

▨ Area receives no direct sky light (applied to habitable rooms)

□ Area does receive direct sky light.

▬ Light aperture.

Project Name: Regents Park Estate, London NW1 4BX

Drawing Title: No Sky Line Contours

Scale: Do not scale

Drawing No: 7 of 7

Rev. -

Rev Date Details of revision



Burley House
15 - 17 High Street
Rayleigh
Essex SS6 7EW

Tel. 0800 197 4836

enquiries@right-of-light.co.uk
www.right-of-light-consulting.com

APPENDIX 7

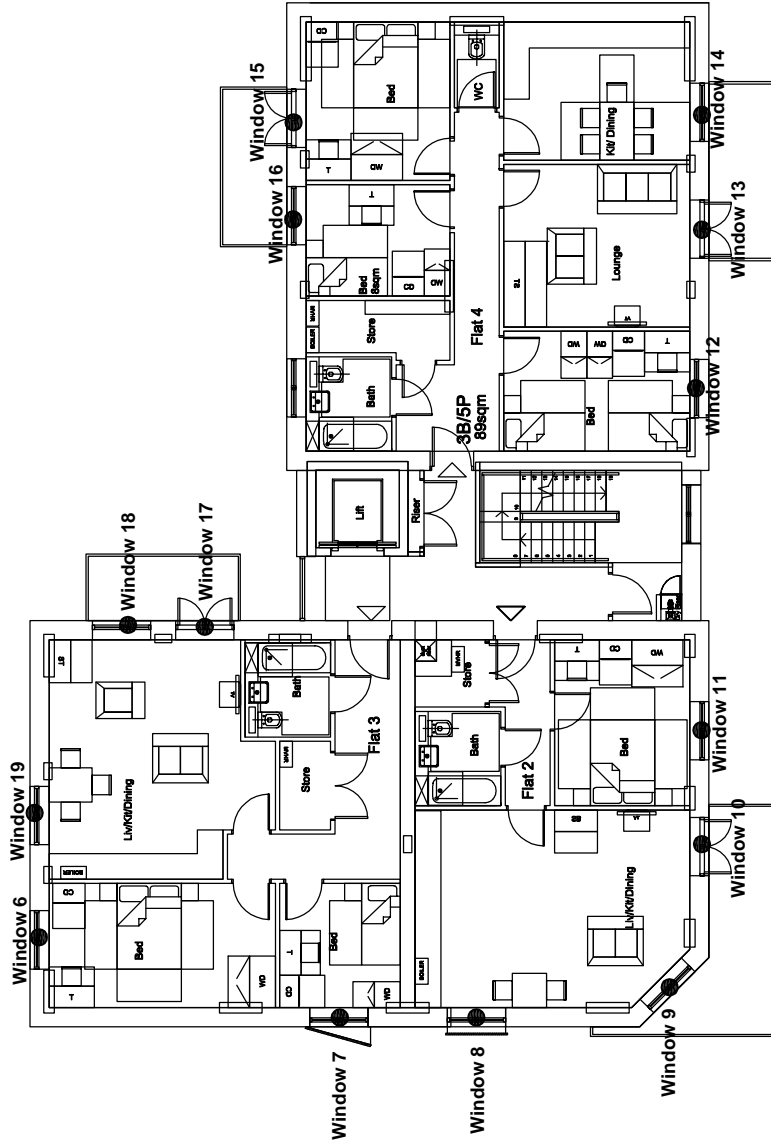
VICTORY PUB

APPENDIX 7.1

WINDOW KEY

Key:

Window 1 ● Window reference



Project Name: Regents Park Estate, London NW1 4BX	
Drawing Title: Window Key	
Scale: Do not scale	
Drawing No: 2 of 5	
Rev	Date
Details of revision	
	Rev. -



RIGHT OF LIGHT CONSULTING
Chartered Surveyors

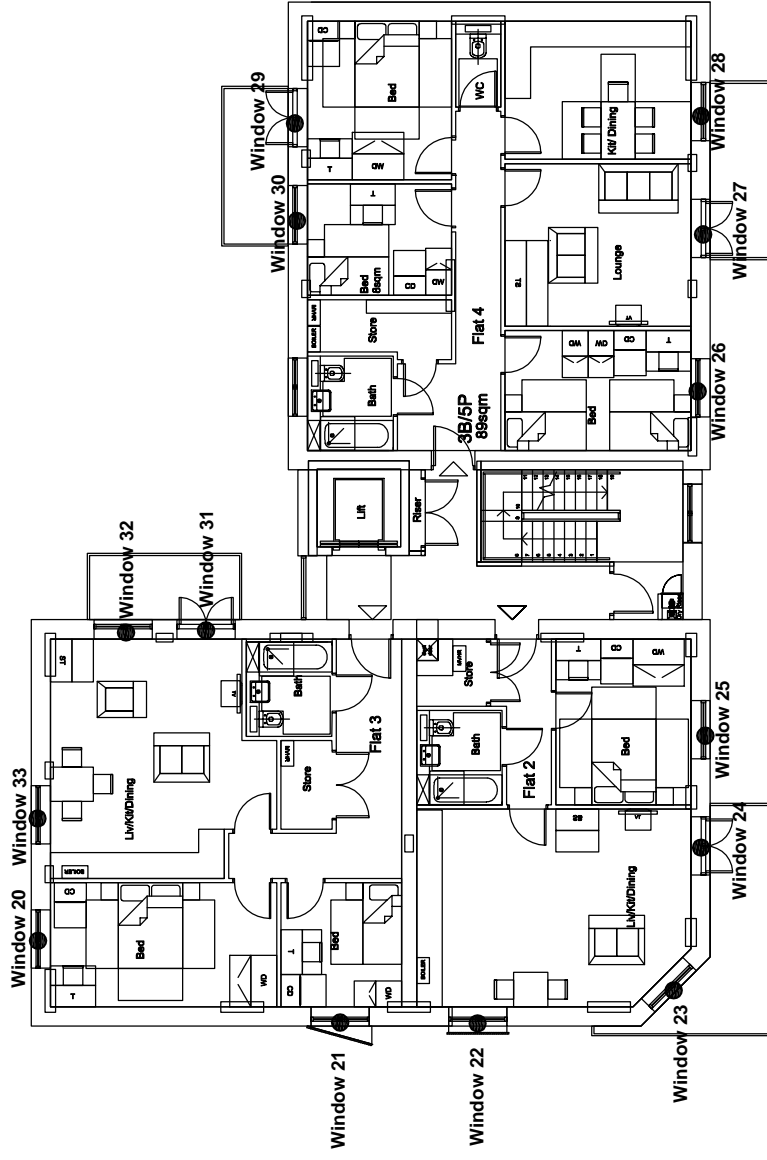
Burley House
15 - 17 High Street
Rayleigh
Essex SS6 7EW

Tel. 0800 197 4836

enquiries@right-of-light.co.uk
www.right-of-light-consulting.com

Key:

Window 1 ● Window reference



Project Name: **Regents Park Estate, London NW1 4BX**

Drawing Title: **Window Key**

Scale: **Do not scale**

Drawing No: **3 of 5** Rev. -

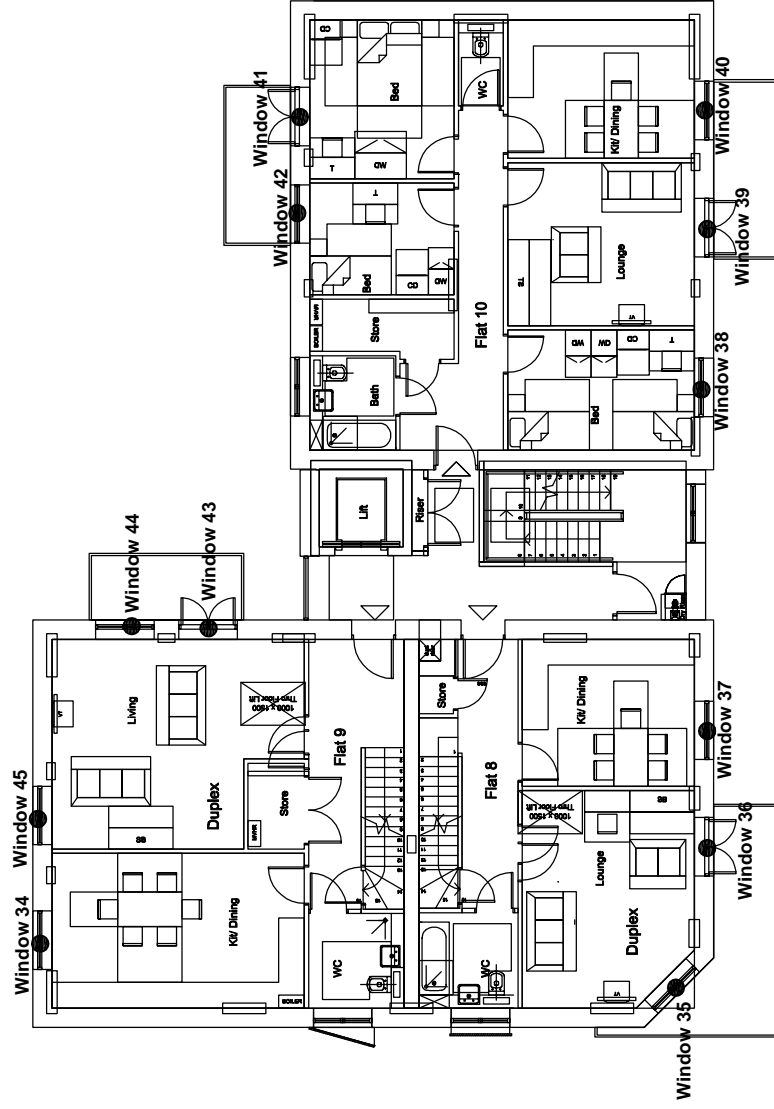
Rev	Date	Details of revision



Burley House
15 - 17 High Street
Rayleigh
Essex SS6 7EW
Tel. 0800 197 4836
enquiries@right-of-light.co.uk
www.right-of-light-consulting.com

Key:

Window 1 ● Window reference



Project Name: Regents Park Estate, London NW1 4BX	
Drawing Title: Window Key	
Scale: Do not scale	
Drawing No: 4 of 5	
Rev.	Date
	Details of revision



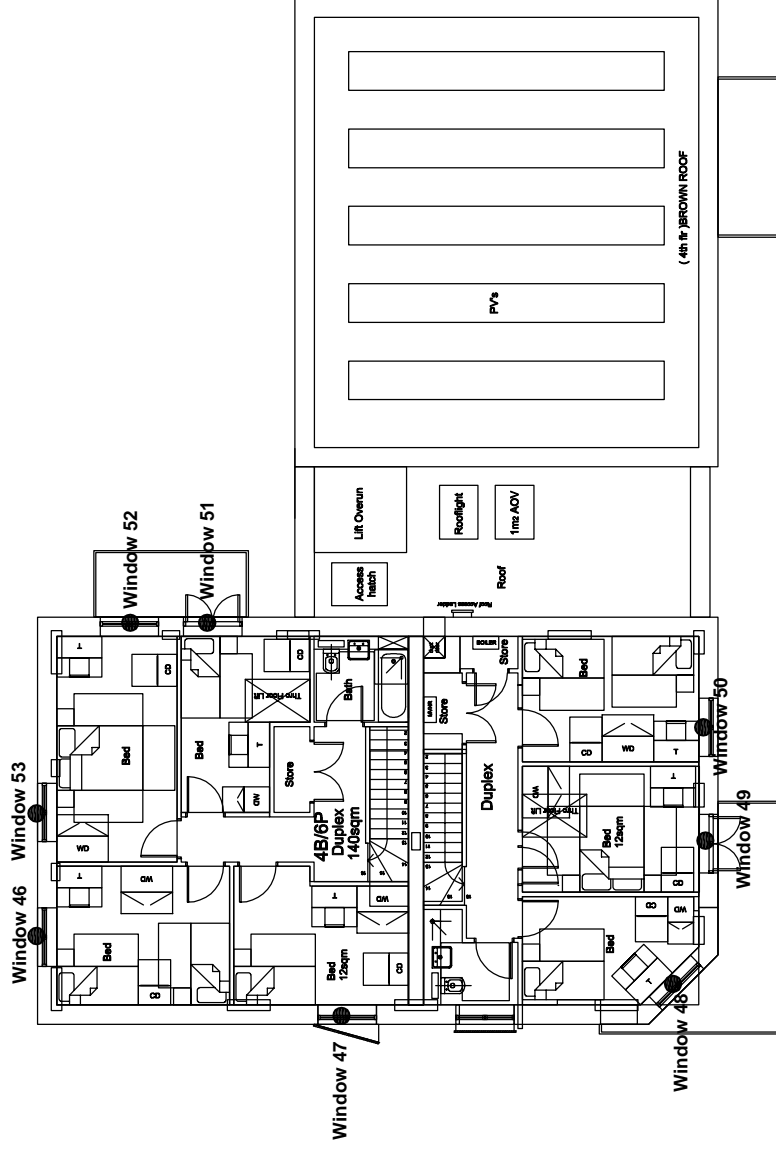
RIGHT OF LIGHT
CONSULTING
Chartered Surveyors

Burley House
15 - 17 High Street
Rayleigh
Essex SS6 7EW
Tel. 0800 197 4836

enquiries@right-of-light.co.uk
www.right-of-light-consulting.com

Key:

Window 1 ● Window reference



Project Name: Regents Park Estate, London NW1 4BX		
Drawing Title: Window Key		
Scale: Do not scale		
Drawing No: 5 of 5		
Rev	Date	Details of revision



Burley House
15 - 17 High Street
Rayleigh
Essex SS6 7EW
Tel. 0800 197 4836
enquiries@right-of-light.co.uk
www.right-of-light-consulting.com

APPENDIX 7.2

DAYLIGHT AND SUNLIGHT CALCULATIONS

**Appendix 7.2 - Average Daylight Factor (ADF)
Regents Park Estate, London NW1 4BX**

Reference	Target ADF based on room use		Average Daylight Factor Coefficients					Actual ADF	
	Primary room use	ADF	T	Aw	A	R	Theta	ADF	Result
<u>Proposed Ground Floor</u>									
Window 1 (lower)			0.68	0.51	86.46	0.72	69.2	0.2%	
Window 1 (upper)			0.68	2.19	86.46	0.72	71.8	2.6%	Pass
Total ADF for room	Dining/Kitchen	2.0%						2.8%	Pass
Window 2 (lower)			0.68	0.51	87.78	0.72	62.6	0.2%	
Window 2 (upper)			0.68	2.19	87.78	0.72	54.9	1.9%	
Total ADF for room	Living Room	1.5%						2.1%	Pass
Window 3 (lower)			0.68	0.92	82.16	0.72	52.5	0.3%	
Window 3 (upper)			0.68	1.46	82.16	0.72	48.1	1.2%	
Total ADF for room	Bedroom	1.0%						1.5%	Pass
Window 4 (lower)			0.68	0.92	77.85	0.72	50.3	0.4%	
Window 4 (upper)			0.68	1.46	77.85	0.72	45.3	1.2%	
Total ADF for room	Bedroom	1.0%						1.6%	Pass
Window 5 (lower)			0.68	0.63	97.93	0.73	42.5	0.2%	
Window 5 (upper)			0.68	1.03	97.93	0.73	37.8	0.6%	
Total ADF for room	Non Domestic Kitchen	n/a						0.8%	n/a
<u>Proposed First Floor</u>									
Window 6 (lower)			0.68	0.92	91.84	0.72	60.5	0.4%	
Window 6 (upper)			0.68	1.52	91.84	0.72	63.3	1.5%	
Total ADF for room	Bedroom	1.0%						1.9%	Pass
Window 7 (lower)			0.68	0.92	52.21	0.71	26.1	0.2%	
Window 7 (upper)			0.68	1.52	52.21	0.71	25.5	1.0%	
Total ADF for room	Bedroom	1.0%						1.2%	Pass
Window 8 (lower)			0.68	0.92	124.11	0.68	23.6	0.1%	
Window 8 (upper)			0.68	1.52	124.11	0.68	24.3	0.4%	
Window 9 (lower)			0.68	0.92	124.11	0.68	65.8	0.2%	
Window 9 (upper)			0.68	1.52	124.11	0.68	54.4	0.8%	
Window 10 (lower)			0.68	0.92	124.11	0.68	66.9	0.2%	
Window 10 (upper)			0.68	1.52	124.11	0.68	54.0	0.8%	
Total ADF for room	Living/Dining/Kitchen	2.0%						2.6%	Pass

**Appendix 7.2 - Average Daylight Factor (ADF)
Regents Park Estate, London NW1 4BX**

Reference	Target ADF based on room use		Average Daylight Factor Coefficients						Actual ADF	
	Primary room use	ADF	T	Aw	A	R	Theta	ADF	Result	
Window 11 (lower)			0.68	0.92	68.68	0.71	74.4	0.6%		
Window 11 (upper)			0.68	1.52	68.68	0.71	74.7	2.3%		
Total ADF for room	Bedroom	1.0%						2.9%	Pass	
Window 12 (lower)			0.68	0.92	69.3	0.71	75.1	0.6%		
Window 12 (upper)			0.68	1.52	69.3	0.71	76.4	2.3%		
Total ADF for room	Bedroom	1.0%						2.9%	Pass	
Window 13 (lower)			0.68	0.92	84.17	0.71	66.4	0.4%		
Window 13 (upper)			0.68	1.52	84.17	0.71	54.5	1.4%		
Total ADF for room	Living Room	1.5%						1.8%	Pass	
Window 14 (lower)			0.68	0.98	75.59	0.71	65.9	0.5%		
Window 14 (upper)			0.68	1.52	75.59	0.71	54.2	1.5%		
Total ADF for room	Dining/Kitchen	2.0%						2.0%	Pass	
Window 15 (lower)			0.68	0.92	69.24	0.71	57.1	0.4%		
Window 15 (upper)			0.68	1.52	69.24	0.71	47.2	1.4%		
Total ADF for room	Bedroom	1.0%						1.8%	Pass	
Window 16 (lower)			0.68	0.92	55.01	0.71	55.0	0.5%		
Window 16 (upper)			0.68	1.52	55.01	0.71	44.2	1.7%		
Total ADF for room	Bedroom	1.0%						2.2%	Pass	
Window 17 (lower)			0.68	0.92	120.78	0.68	43.8	0.2%		
Window 17 (upper)			0.68	1.52	120.78	0.68	34.9	0.6%		
Window 18 (lower)			0.68	0.92	120.78	0.68	49.9	0.2%		
Window 18 (upper)			0.68	1.52	120.78	0.68	42.4	0.7%		
Window 19 (lower)			0.68	0.92	120.78	0.68	59.3	0.2%		
Window 19 (upper)			0.68	1.52	120.78	0.68	62.1	1.0%		
Total ADF for room	Living/Dining/Kitchen	2.0%						2.9%	Pass	
<u>Proposed Second Floor</u>										
Window 20 (lower)			0.68	0.92	91.84	0.72	69.5	0.4%		
Window 20 (upper)			0.68	1.52	91.84	0.72	73.0	1.7%		
Total ADF for room	Bedroom	1.0%						2.1%	Pass	
Window 21 (lower)			0.68	0.92	52.21	0.71	30.6	0.3%		
Window 21 (upper)			0.68	1.52	52.21	0.71	30.4	1.2%		

**Appendix 7.2 - Average Daylight Factor (ADF)
Regents Park Estate, London NW1 4BX**

Reference	Target ADF based on room use		Average Daylight Factor Coefficients						Actual ADF	
	Primary room use	ADF	T	Aw	A	R	Theta	ADF	Result	
Total ADF for room	Bedroom	1.0%	0.68	0.92	124.11	0.68	28.2	1.5%	Pass	
Window 22 (lower)			0.68	0.92	124.11	0.68	28.2	0.1%		
Window 22 (upper)			0.68	1.52	124.11	0.68	29.0	0.4%		
Window 23 (lower)			0.68	0.92	124.11	0.68	70.9	0.3%		
Window 23 (upper)			0.68	1.52	124.11	0.68	59.2	0.9%		
Window 24 (lower)			0.68	0.92	124.11	0.68	70.6	0.3%		
Window 24 (upper)			0.68	1.52	124.11	0.68	57.4	0.9%		
Total ADF for room	Living/Dining/Kitchen	2.0%	0.68	0.92	68.68	0.71	78.6	2.9%	Pass	
Window 25 (lower)			0.68	0.92	68.68	0.71	78.6	0.6%		
Window 25 (upper)			0.68	1.52	68.68	0.71	78.9	2.4%		
Total ADF for room	Bedroom	1.0%	0.68	0.92	69.3	0.71	79.9	3.0%	Pass	
Window 26 (lower)			0.68	0.92	69.3	0.71	79.9	0.6%		
Window 26 (upper)			0.68	1.52	69.3	0.71	81.4	2.5%		
Total ADF for room	Bedroom	1.0%	0.68	0.92	84.17	0.71	70.1	3.1%	Pass	
Window 27 (lower)			0.68	0.92	84.17	0.71	70.1	0.4%		
Window 27 (upper)			0.68	1.52	84.17	0.71	57.9	1.4%		
Total ADF for room	Living Room	1.5%	0.68	0.92	75.59	0.71	69.7	1.8%	Pass	
Window 28 (lower)			0.68	0.92	75.59	0.71	69.7	0.5%		
Window 28 (upper)			0.68	1.52	75.59	0.71	57.6	1.6%		
Total ADF for room	Dining/Kitchen	2.0%	0.68	0.92	69.24	0.71	63.0	2.1%	Pass	
Window 29 (lower)			0.68	0.92	69.24	0.71	63.0	0.5%		
Window 29 (upper)			0.68	1.52	69.24	0.71	52.9	1.6%		
Total ADF for room	Bedroom	1.0%	0.68	0.92	55.01	0.71	61.5	2.1%	Pass	
Window 30 (lower)			0.68	0.92	55.01	0.71	61.5	0.6%		
Window 30 (upper)			0.68	1.52	55.01	0.71	50.7	1.9%		
Total ADF for room	Bedroom	1.0%	0.68	0.92	120.78	0.68	47.4	2.5%	Pass	
Window 31 (lower)			0.68	0.92	120.78	0.68	47.4	0.2%		
Window 31 (upper)			0.68	1.52	120.78	0.68	38.1	0.6%		
Window 32 (lower)			0.68	0.92	120.78	0.68	54.5	0.2%		
Window 32 (upper)			0.68	1.52	120.78	0.68	46.2	0.7%		
Window 33 (lower)			0.68	0.92	120.78	0.68	68.2	0.3%		

**Appendix 7.2 - Average Daylight Factor (ADF)
Regents Park Estate, London NW1 4BX**

Reference	Target ADF based on room use		Average Daylight Factor Coefficients					Actual ADF	
	Primary room use	ADF	T	Aw	A	R	Theta	ADF	Result
Window 33 (upper)	Living/Dining/Kitchen	2.0%	0.68	1.52	120.78	0.68	71.8	1.2%	Pass
Total ADF for room			0.68	0.55	101.93	0.71	80.8		
<u>Proposed Third Floor</u>	Dining/Kitchen	2.0%	0.68	1.62	101.93	0.71	83.4	1.8%	Pass
Total ADF for room			0.68	0.92	93.31	0.69	75.5		
Window 34 (lower)	Living Room	1.5%	0.68	1.52	93.31	0.69	62.4	0.4%	Pass
Window 35 (upper)			0.68	0.92	93.31	0.69	73.6		
Window 36 (lower)	Living Room	1.5%	0.68	1.52	93.31	0.69	59.3	0.4%	Pass
Window 36 (upper)			0.68	0.52	74.17	0.72	82.7		
Total ADF for room	Dining/Kitchen	2.0%	0.68	1.52	74.17	0.72	82.8	2.4%	Pass
Window 37 (lower)	Bedroom	1.0%	0.68	0.92	69.3	0.71	84.8	0.6%	Pass
Window 37 (upper)			0.68	1.52	69.3	0.71	85.5		
Total ADF for room	Living Room	1.5%	0.68	0.92	84.17	0.71	84.3	0.5%	Pass
Window 38 (lower)			0.68	1.52	84.17	0.71	85.1		
Window 38 (upper)	Dining/Kitchen	2.0%	0.68	0.91	75.59	0.71	83.9	0.6%	Pass
Total ADF for room			0.68	1.51	75.59	0.71	84.7		
Window 39 (lower)	Bedroom	1.0%	0.68	0.92	69.24	0.71	79.1	0.6%	Pass
Window 39 (upper)			0.68	1.52	69.24	0.71	81.3		
Total ADF for room	Bedroom	1.0%	0.68	0.92	55.01	0.71	77.8	2.5%	Pass
Window 40 (lower)			0.68	1.52	55.01	0.71	80.2		
Window 40 (upper)	Bedroom	1.0%	0.68	0.92	119.09	0.68	53.4	0.7%	Pass
Total ADF for room			0.68	0.92	119.09	0.68	53.4		
Window 41 (lower)	Bedroom	1.0%	0.68	0.92	119.09	0.68	53.4	3.1%	Pass
Window 41 (upper)			0.68	0.92	119.09	0.68	53.4		
Total ADF for room	Bedroom	1.0%	0.68	0.92	119.09	0.68	53.4	3.1%	Pass
Window 42 (lower)			0.68	0.92	119.09	0.68	53.4		
Window 42 (upper)	Bedroom	1.0%	0.68	0.92	119.09	0.68	53.4	3.8%	Pass
Total ADF for room			0.68	0.92	119.09	0.68	53.4		
Window 43 (lower)			0.68	0.92	119.09	0.68	53.4	0.2%	Pass

**Appendix 7.2 - Average Daylight Factor (ADF)
Regents Park Estate, London NW1 4BX**

Reference	Target ADF based on room use		Average Daylight Factor Coefficients					Actual ADF	
	Primary room use	ADF	T	A _w	A	R	Theta	ADF	Result
Window 43 (upper)			0.68	1.52	119.09	0.68	44.2	0.7%	
Window 44 (lower)			0.68	0.92	119.09	0.68	60.4	0.2%	
Window 44 (upper)			0.68	1.52	119.09	0.68	51.1	0.8%	
Window 45 (lower)			0.68	0.52	119.09	0.68	79.9	0.2%	
Window 45 (upper)			0.68	1.52	119.09	0.68	82.7	1.4%	
Total ADF for room	Living Room	1.5%						3.5%	Pass
<u>Proposed Fourth Floor</u>									
Window 46	Bedroom	1.0%	0.68	1.47	71.64	0.72	87.1	2.5%	Pass
Window 47 (lower)			0.68	0.11	70.17	0.72	37.0	0.0%	
Window 47 (upper)			0.68	1.61	70.17	0.72	35.2	1.1%	
Total ADF for room	Bedroom	1.0%						1.1%	Pass
Window 48 (lower)			0.68	0.92	58.14	0.71	89.1	0.8%	
Window 48 (upper)			0.68	1.52	58.14	0.71	89.0	3.2%	
Total ADF for room	Bedroom	1.0%						4.0%	Pass
Window 49 (lower)			0.68	0.92	68.41	0.71	87.8	0.6%	
Window 49 (upper)			0.68	1.52	68.41	0.71	88.1	2.7%	
Total ADF for room	Bedroom	1.0%						3.3%	Pass
Window 50 (lower)			0.68	0.52	68.3	0.72	87.7	0.4%	
Window 50 (upper)			0.68	1.52	68.3	0.72	88.0	2.8%	
Total ADF for room	Bedroom	1.0%						3.2%	Pass
Window 51 (lower)			0.68	0.92	65.27	0.72	80.8	0.6%	
Window 51 (upper)			0.68	1.52	65.27	0.72	87.0	2.9%	
Total ADF for room	Bedroom	1.0%						3.5%	Pass
Window 52 (lower)			0.68	0.92	80.12	0.7	84.1	0.5%	
Window 52 (upper)			0.68	1.52	80.12	0.7	87.0	2.2%	
Window 53			0.68	1.47	80.12	0.7	87.1	2.1%	
Total ADF for room	Bedroom	1.0%						4.8%	Pass

**Appendix 7.2 - Room Depth Calculation
Regents Park Estate, London NW1 4BX**

Room	Room Depth Coefficients				Room Depth Calculation		Result
	L	W	H	Rb	L/W + L/H	2/H-Rb	
<u>Proposed Ground Floor</u>							
Window 1	3.3	4.4	2.9	0.72	1.89 <=	7.19	Pass
Window 2	4.3	3.4	2.9	0.72	2.75 <=	7.14	Pass
Window 3	4.5	2.9	2.2	0.72	3.6 <=	7.24	Pass
Window 4	3.4	3.6	2.2	0.72	2.49 <=	7.22	Pass
Window 5	2.8	6.1	2.3	0.73	1.68 <=	7.49	Pass
<u>Proposed First Floor</u>							
Window 6	5.3	4.0	2.3	0.72	3.63 <=	7.11	Pass
Window 7	2.9	2.8	2.3	0.71	2.3 <=	6.97	Pass
Window 8	4.6	6.4	2.3	0.68	2.72 <=	6.22	Pass
Window 9	6.5	6.5	2.2	0.68	3.95 <=	6.22	Pass
Window 10	6.4	4.6	2.3	0.68	4.17 <=	6.22	Pass
Window 11	3.2	3.9	2.3	0.71	2.21 <=	6.98	Pass
Window 12	4.3	2.8	2.3	0.71	3.41 <=	7.0	Pass
Window 13	4.3	3.8	2.3	0.71	3.0 <=	6.93	Pass
Window 14	4.3	3.2	2.3	0.71	3.21 <=	6.93	Pass
Window 15	3.4	3.7	2.3	0.71	2.4 <=	6.97	Pass
Window 16	3.4	2.6	2.3	0.71	2.79 <=	6.99	Pass
Window 17	5.6	5.3	2.3	0.68	3.49 <=	6.3	Pass
Window 18	5.6	5.3	2.3	0.68	3.49 <=	6.3	Pass
Window 19	5.3	5.6	2.3	0.68	3.25 <=	6.3	Pass
<u>Proposed Second Floor</u>							
Window 20	5.3	4.0	2.3	0.72	3.63 <=	7.11	Pass
Window 21	2.9	2.8	2.3	0.71	2.3 <=	6.97	Pass
Window 22	4.6	6.4	2.3	0.68	2.72 <=	6.22	Pass
Window 23	6.5	6.5	2.2	0.68	3.95 <=	6.22	Pass
Window 24	6.4	4.6	2.3	0.68	4.17 <=	6.22	Pass
Window 25	3.2	3.9	2.3	0.71	2.21 <=	6.98	Pass
Window 26	4.3	2.8	2.3	0.71	3.41 <=	7.0	Pass
Window 27	4.3	3.8	2.3	0.71	3.0 <=	6.93	Pass
Window 28	4.3	3.2	2.3	0.71	3.21 <=	6.97	Pass
Window 29	3.4	3.7	2.3	0.71	2.4 <=	6.97	Pass
Window 30	3.4	2.6	2.3	0.71	2.79 <=	6.99	Pass

**Appendix 7.2 - Room Depth Calculation
Regents Park Estate, London NW1 4BX**

Room	Room Depth Coefficients				Room Depth Calculation		Result
	L	W	H	Rb	L/W + L/H	2/H-Rb	
Window 31	5.6	5.3	2.3	0.68	3.49 <=	6.3	Pass
Window 32	5.6	5.3	2.3	0.68	3.49 <=	6.3	Pass
Window 33	5.3	5.6	2.3	0.68	3.25 <=	6.3	Pass
<u>Proposed Third Floor</u>							
Window 34	5.9	3.6	2.3	0.71	4.2 <=	6.96	Pass
Window 35	5.4	5.7	2.2	0.69	3.4 <=	6.48	Pass
Window 36	4.0	5.1	2.3	0.69	2.52 <=	6.48	Pass
Window 37	4.0	3.4	2.3	0.72	2.92 <=	7.05	Pass
Window 38	4.3	2.8	2.3	0.71	3.41 <=	7.0	Pass
Window 39	4.3	3.8	2.3	0.71	3.0 <=	6.93	Pass
Window 40	4.3	3.2	2.3	0.71	3.21 <=	6.98	Pass
Window 41	3.4	3.7	2.3	0.71	2.4 <=	6.97	Pass
Window 42	3.4	2.6	2.3	0.71	2.79 <=	6.99	Pass
Window 43	4.9	5.9	2.2	0.68	3.06 <=	6.34	Pass
Window 44	4.9	5.9	2.2	0.68	3.06 <=	6.34	Pass
Window 45	5.9	4.9	2.3	0.68	3.77 <=	6.34	Pass
<u>Proposed Fourth Floor</u>							
Window 46	4.0	3.2	2.2	0.72	3.07 <=	7.21	Pass
Window 47	3.2	4.1	2.3	0.72	2.17 <=	7.22	Pass
Window 48	3.6	3.6	2.3	0.71	2.57 <=	7.0	Pass
Window 49	4.1	2.9	2.3	0.71	3.2 <=	6.99	Pass
Window 50	4.1	2.9	2.3	0.72	3.2 <=	7.09	Pass
Window 51	4.1	3.0	2.3	0.72	3.15 <=	7.12	Pass
Window 52	5.3	2.8	2.3	0.7	4.2 <=	6.72	Pass
Window 53	2.8	5.2	2.2	0.7	1.81 <=	6.72	Pass

Appendix 7.2 - Sunlight to Windows
Regents Park Estate, London NW1 4BX

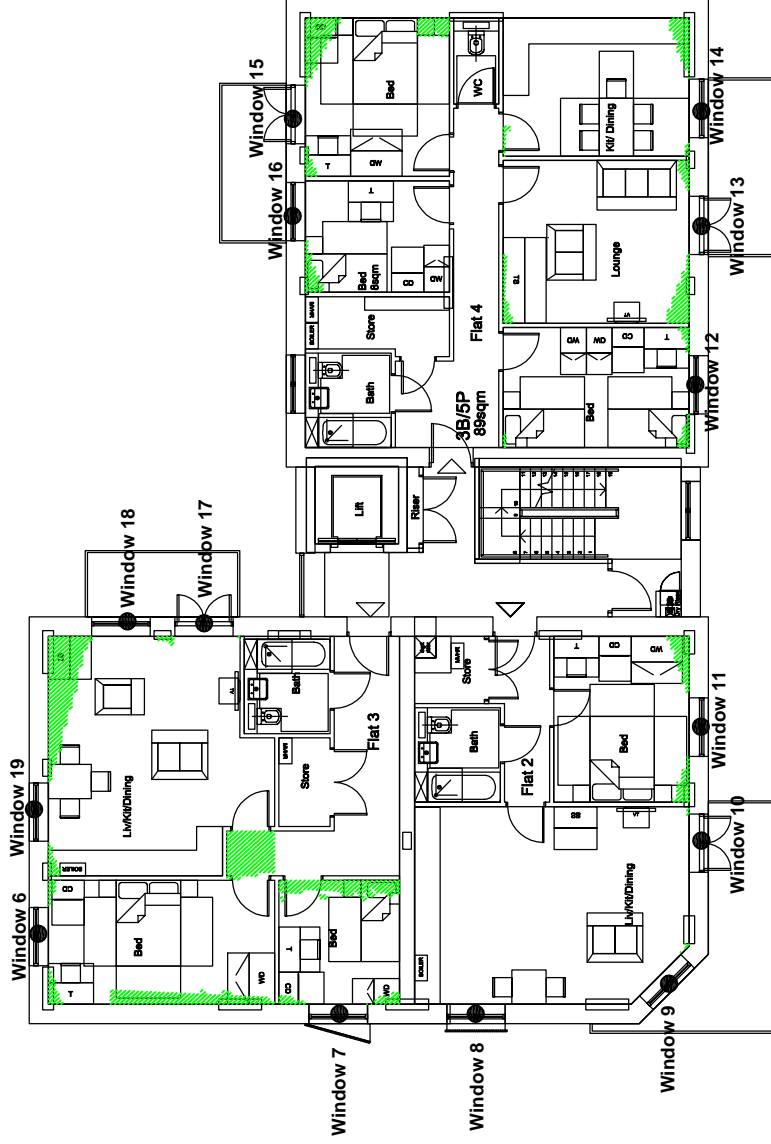
Reference	Use Class	Annual Probable Sunlight Hours	
		Total	Winter
<u>Proposed Ground Floor</u>			
Window 2	Living Room	43%	10%
<u>Proposed First Floor</u>			
Window 8	Living/Dining/Kit	6%	0%
Window 9	Living/Dining/Kit	17%	3%
Window 10	Living/Dining/Kit	44%	12%
Window 17	Living/Dining/Kit	20%	12%
Window 18	Living/Dining/Kit	34%	14%
<u>Proposed Second Floor</u>			
Window 22	Living/Dining/Kit	6%	0%
Window 23	Living/Dining/Kit	18%	4%
Window 24	Living/Dining/Kit	46%	14%
Window 31	Living/Dining/Kit	26%	14%
Window 32	Living/Dining/Kit	42%	16%
Window 33	Living/Dining/Kit	41%	11%
<u>Proposed Third Floor</u>			
Window 43	Living Room	33%	16%
Window 44	Living Room	51%	21%
Window 45	Living Room	46%	12%

APPENDIX 7.3

NO SKY LINE CONTOURS

Appendix 7.3 No Sky Line Contours

Proposed First floor at The Victory Pub



Key:

1

Window reference

Area receives no direct sky light (applied to habitable rooms)

Area does receive direct sky light.

Light aperture.

Project Name: **Regents Park Estate, London NW1 4BX**

Drawing Title: **No Sky Line Contours**

Scale: **Do not scale**

Drawing No: **2 of 5**

Rev. -

Rev. Date Details of revision



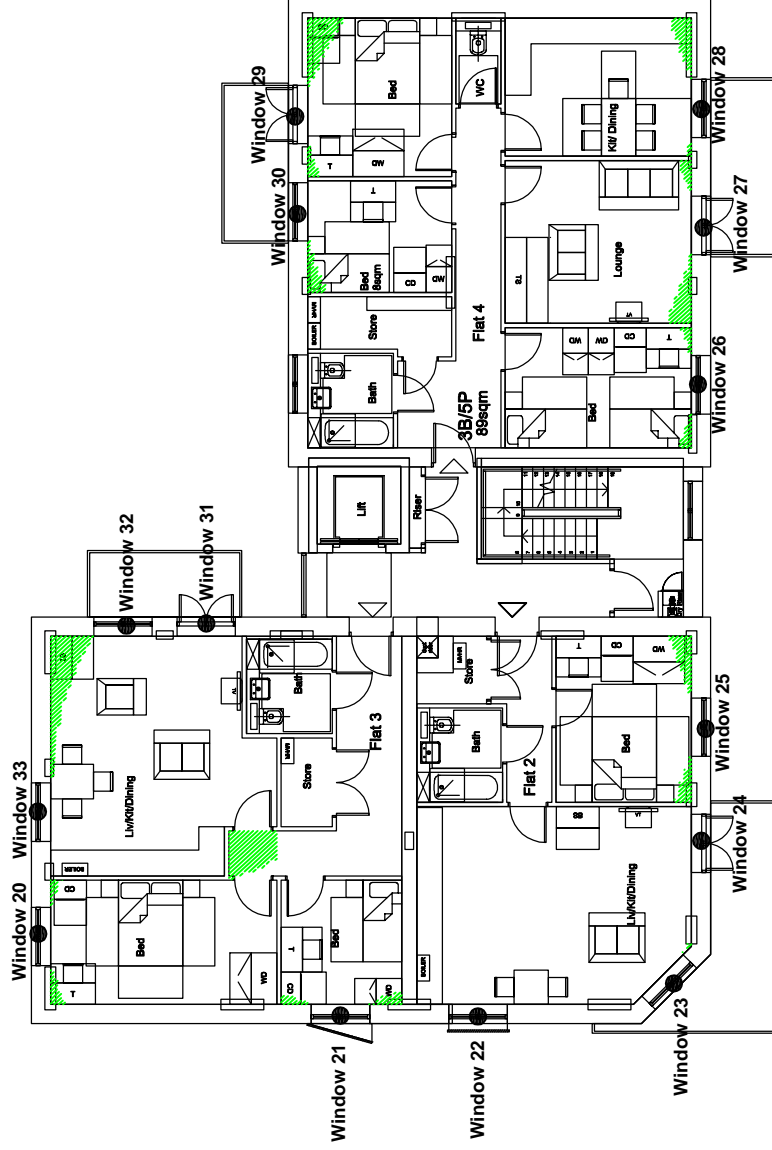
Burley House
15 - 17 High Street
Rayleigh
Essex SS6 7EW

Tel. 0800 197 4836

enquiries@right-of-light.co.uk
www.right-of-light-consulting.com

Appendix 7.3 No Sky Line Contours

Proposed Second floor at The Victory Pub




Key:

1

Window reference

 Area receives no direct sky light (applied to habitable rooms)

 Area does receive direct sky light.

 Light aperture.

Project Name: **Regents Park Estate, London NW1 4BX**

Drawing Title: **No Sky Line Contours**

Scale: **Do not scale**

Drawing No: **3 of 5**

Rev. -

Rev

Date

Details of revision



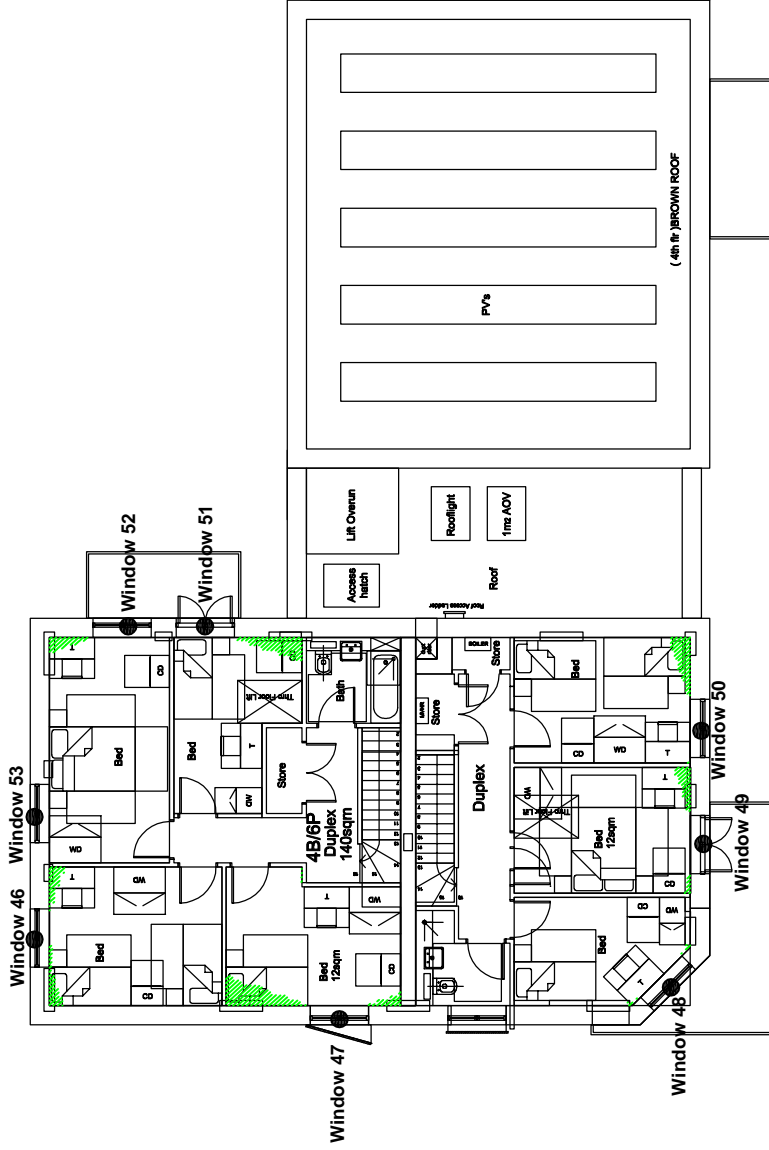
Burley House
15 - 17 High Street
Rayleigh
Essex SS6 7EW

Tel. 0800 197 4836

enquiries@right-of-light.co.uk
www.right-of-light-consulting.com

Appendix 7.3 No Sky Line Contours

Proposed Fourth floor at The Victory Pub



Key:

1

Window reference

Area receives no direct sky light (applied to habitable rooms)

Area does receive direct sky light.

Light aperture.

Project Name: **Regents Park Estate, London NW1 4BX**

Drawing Title: **No Sky Line Contours**

Scale: **Do not scale**

Drawing No: **5 of 5**

Rev. -

Rev

Date

Details of revision



Burley House
15 - 17 High Street
Rayleigh
Essex SS6 7EW

Tel. 0800 197 4836

enquiries@right-of-light.co.uk
www.right-of-light-consulting.com

APPENDIX 8

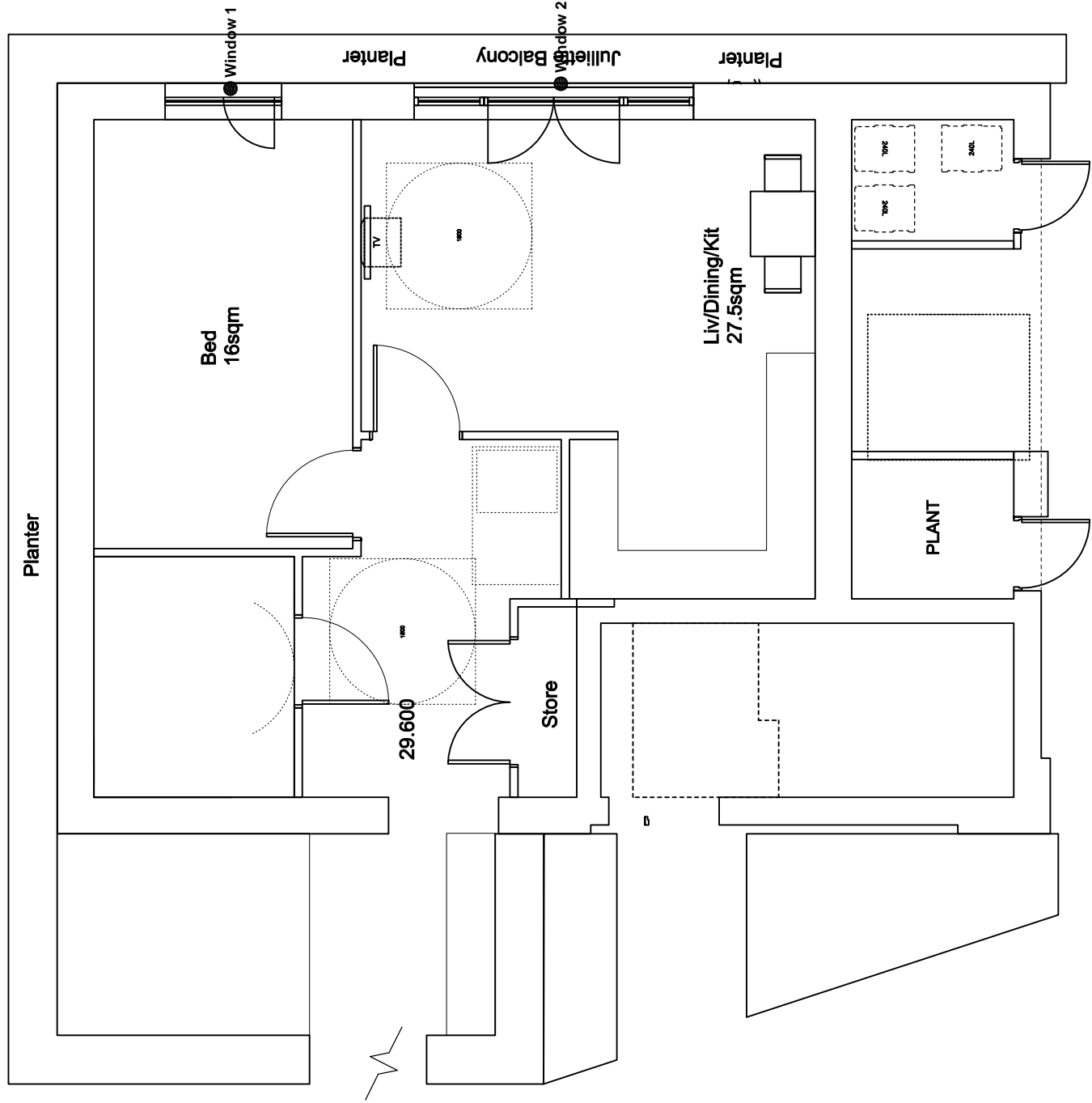
ST BEDE'S MEWS

APPENDIX 8.1

WINDOW KEY

Key:

Window 1 ● Window reference



Project Name: **Regents Park Estate, London NW1 4BX**

Drawing Title: **Window Key**

Scale: **Do not scale**

Drawing No: **1 of 3**

Rev. **-**

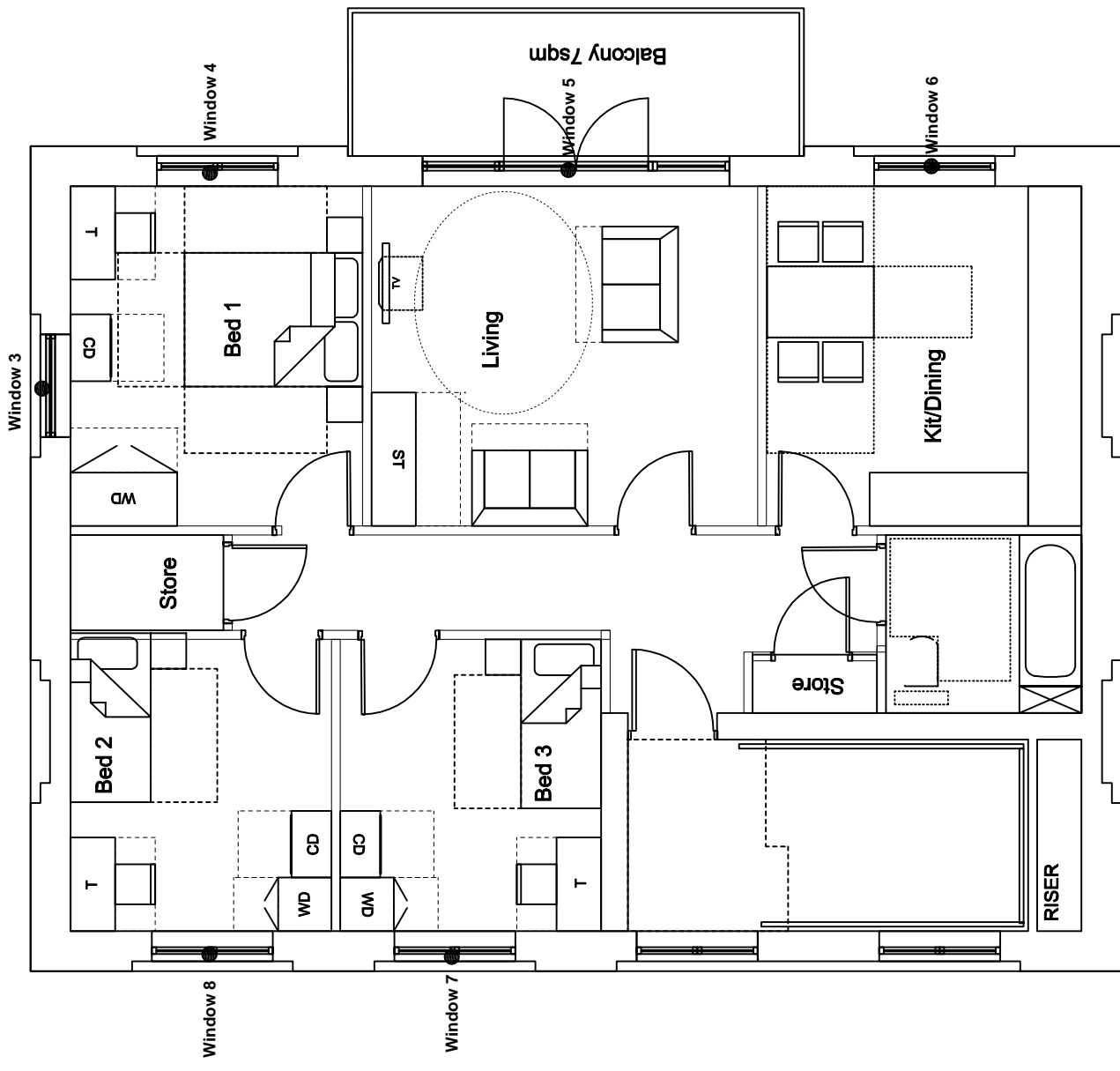
Rev. **-** Details of revision



Burley House
15 - 17 High Street
Rayleigh
Essex SS6 7EW
Tel. 0800 197 4836
enquiries@right-of-light.co.uk
www.right-of-light-consulting.com

Key:

Window 1 ● Window reference



Project Name: **Regents Park Estate, London NW1 4BX**

Drawing Title: **Window Key**

Scale: **Do not scale**

Drawing No: **2 of 3**

Rev. -

Rev. Date Details of revision



Burley House
15 - 17 High Street
Rayleigh
Essex SS6 7EW

Tel. 0800 197 4836

enquiries @right-of-light.co.uk
www.right-of-light-consulting.com

APPENDIX 8.2

DAYLIGHT AND SUNLIGHT CALCULATIONS

**Appendix 8.2 - Average Daylight Factor (ADF)
Regents Park Estate, London NW1 4BX (St Bede's Mews)**

Reference	Target ADF based on room use		Average Daylight Factor Coefficients					Actual ADF	
	Primary room use	ADF	T	Aw	A	R	Theta	ADF	Result
<u>Proposed Ground Floor</u>									
Window 1 (lower)			0.68	2.35	102.92	0.68	48.5	0.6%	
Window 1 (upper)			0.68	3.86	102.92	0.68	37.6	1.8%	
Total ADF for room	Living/Dining/Kitchen	2.0%						2.4%	Pass
Window 2 (lower)			0.68	0.98	78.34	0.7	47.8	0.3%	
Window 2 (upper)			0.68	1.61	78.34	0.7	48.0	1.3%	
Total ADF for room	Bedroom	1.0%						1.6%	Pass
<u>Proposed First Floor</u>									
Window 3 (lower)			0.68	0.92	57.82	0.7	68.1	0.6%	
Window 3 (upper)			0.68	1.52	57.82	0.7	70.2	2.5%	
Total ADF for room	Kitchen/Dining	2.0%						3.1%	Pass
Window 4 (lower)			0.68	2.35	75.81	0.67	53.8	0.8%	
Window 4 (upper)			0.68	3.86	75.81	0.67	42.1	2.6%	
Total ADF for room	Living Room	1.5%						3.4%	Pass
Window 5 (lower)			0.68	0.79	62.2	0.71	62.5	0.4%	
Window 5 (upper)			0.68	1.29	62.2	0.71	65.3	1.8%	
Total ADF for room	Bedroom	1.0%						2.2%	Pass
Window 6 (lower)			0.68	0.92	51.69	0.7	54.9	0.5%	
Window 6 (upper)			0.68	1.52	51.69	0.7	58.5	2.3%	
Total ADF for room	Bedroom	1.0%						2.8%	Pass
Window 7 (lower)			0.68	0.92	52.38	0.7	54.9	0.5%	
Window 7 (upper)			0.68	1.52	52.38	0.7	58.4	2.3%	
Total ADF for room	Bedroom	1.0%						2.8%	Pass
<u>Proposed Second Floor</u>									
Window 8 (lower)			0.68	0.92	58.29	0.7	77.2	0.6%	
Window 8 (upper)			0.68	1.52	58.29	0.7	79.3	2.8%	
Total ADF for room	Kitchen/Dining	2.0%						3.4%	Pass
Window 9 (lower)			0.68	2.35	76.38	0.67	73.3	1.1%	
Window 9 (upper)			0.68	3.86	76.38	0.67	76.7	4.8%	
Total ADF for room	Living Room	1.5%						5.9%	Pass

**Appendix 8.2 - Average Daylight Factor (ADF)
Regents Park Estate, London NW1 4BX (St Bede's Mews)**

Reference	Target ADF based on room use		Average Daylight Factor Coefficients					Actual ADF	
	Primary room use	ADF	T	Aw	A	R	Theta	ADF	Result
Window 10 (lower)			0.68	0.79	62.69	0.71	72.1	0.6%	
Window 10 (upper)			0.68	1.29	62.69	0.71	76.4	2.1%	
Total ADF for room	Bedroom	1.0%						2.6%	Pass
Window 11 (lower)			0.68	0.92	52.12	0.7	65.9	0.6%	
Window 11 (upper)			0.68	1.52	52.12	0.7	70.2	2.8%	
Total ADF for room	Bedroom	1.0%						3.4%	Pass
Window 12 (lower)			0.68	0.92	52.82	0.7	65.9	0.6%	
Window 12 (upper)			0.68	1.52	52.82	0.7	70.2	2.7%	
Total ADF for room	Bedroom	1.0%						3.3%	Pass

Appendix 8.2 - Room Depth Calculation
Regents Park Estate, Robert Street Site, London NW1 4BX

Room	Room Depth Coefficients				Room Depth Calculation		Result
	L	W	H	Rb	L/W + L/H	2/H-Rb	
<u>Proposed Ground Floor</u>							
Window 1	5.3	5.6	2.3	0.68	3.25 <=	6.19	Pass
Window 2	5.3	3.2	2.3	0.7	3.96 <=	6.7	Pass
<u>Proposed First Floor</u>							
Window 3	3.8	2.9	2.3	0.7	2.96 <=	6.73	Pass
Window 4	3.8	4.3	2.3	0.67	2.54 <=	6.01	Pass
Window 5	3.3	3.8	2.3	0.71	2.3 <=	6.81	Pass
Window 6	3.3	2.9	2.3	0.7	2.57 <=	6.72	Pass
Window 7	3.3	3.0	2.3	0.7	2.53 <=	6.74	Pass
<u>Proposed Second Floor</u>							
Window 8	3.8	2.9	2.3	0.7	2.96 <=	6.75	Pass
Window 9	3.8	4.3	2.3	0.67	2.54 <=	6.03	Pass
Window 10	3.3	3.8	2.3	0.71	2.3 <=	6.83	Pass
Window 11	3.3	2.9	2.3	0.7	2.57 <=	6.74	Pass
Window 12	3.3	3.0	2.3	0.7	2.53 <=	6.75	Pass

Appendix 8.2 - Sunlight to Windows
Regents Park Estate, Robert Street Site, London NW1 4BX

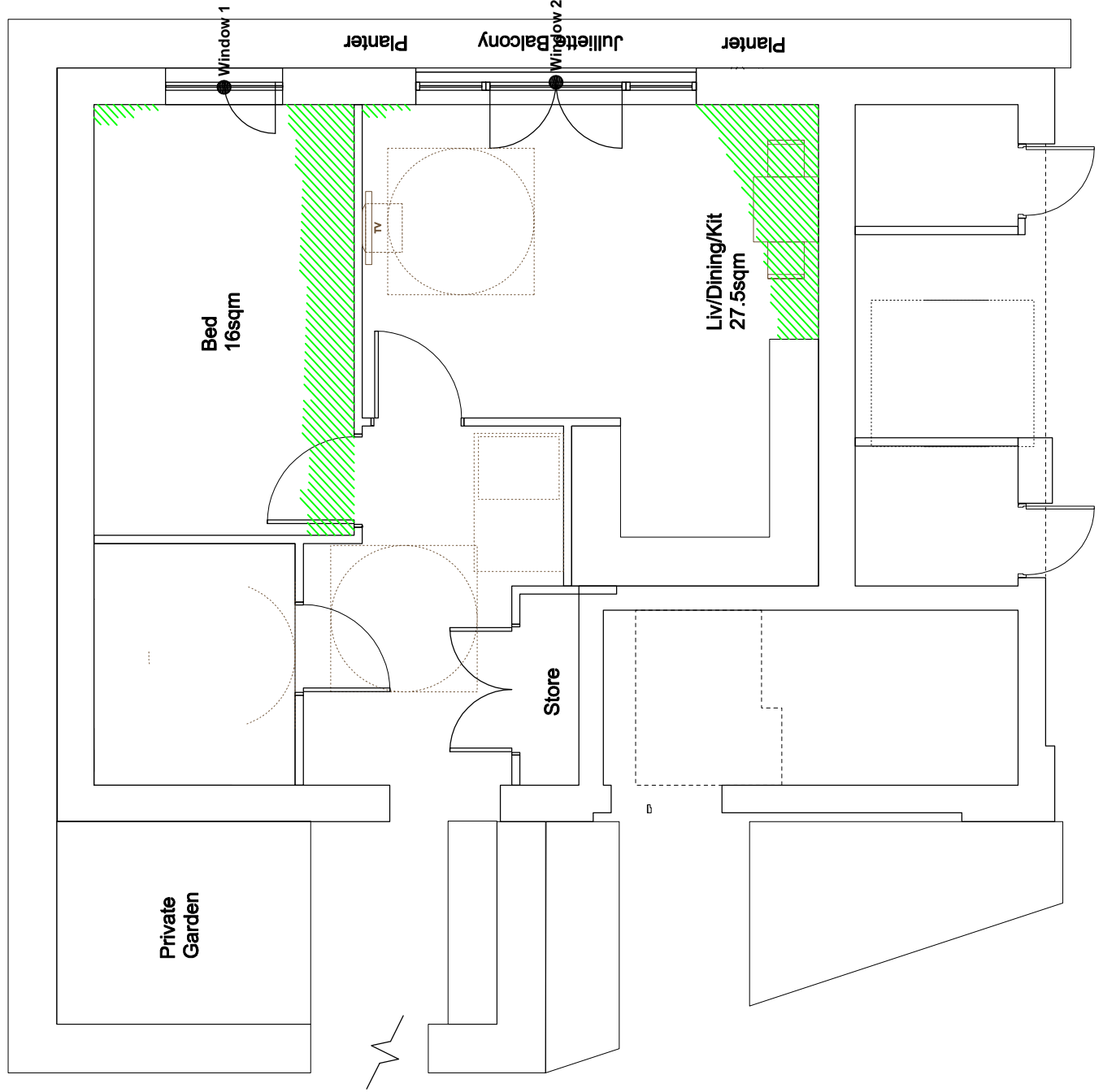
Reference	Use Class	Annual Probable Sunlight Hours	
		Total	Winter
<u>Proposed Ground Floor</u> Window 1	Living/Dining/Kitchen	21%	7%
<u>Proposed First Floor</u> Window 4	Living Room	23%	8%
<u>Proposed Second Floor</u> Window 9	Living Room	34%	8%

APPENDIX 8.3

NO SKY LINE CONTOURS

Appendix 8.3 No Sky Line Contours

Proposed Ground floor



Key:

1

Window reference

Area receives no direct sky light (applied to habitable rooms)

Area does receive direct sky light.

Light aperture.

Project Name: **Regents Park Estate, London NW1 4BX**

Drawing Title: **No Sky Line Contours**

Scale: **Do not scale**

Drawing No: **1 of 3**

Rev. -

Rev

Date

Details of revision



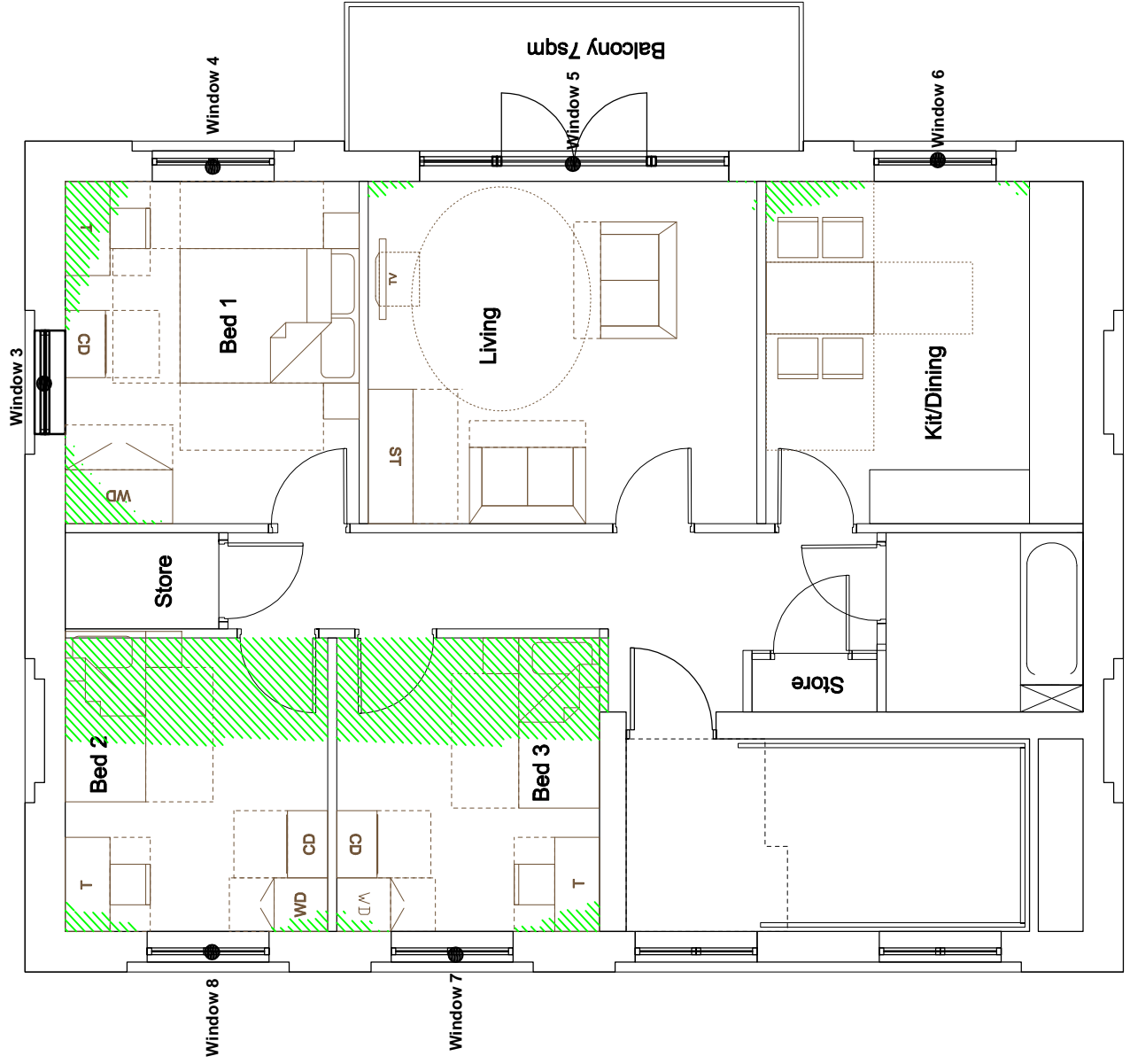
Burley House
15 - 17 High Street
Rayleigh
Essex SS6 7EW

Tel. 0800 197 4836

enquiries@right-of-light.co.uk
www.right-of-light-consulting.com

Appendix 8.3 No Sky Line Contours

Proposed First floor



Key:

1

Window reference

Area receives no direct sky light (applied to habitable rooms)

Area does receive direct sky light.

Light aperture.

Project Name: **Regents Park Estate, London NW1 4BX**

Drawing Title: **No Sky Line Contours**

Scale: **Do not scale**

Drawing No: **2 of 3**

Rev. -

Rev	Date	Details of revision



Burley House
15 - 17 High Street
Rayleigh
Essex SS6 7EW

Tel. 0800 197 4836

enquiries@right-of-light.co.uk
www.right-of-light-consulting.com

Appendix 8.3 No Sky Line Contours


Proposed Second floor

Key:

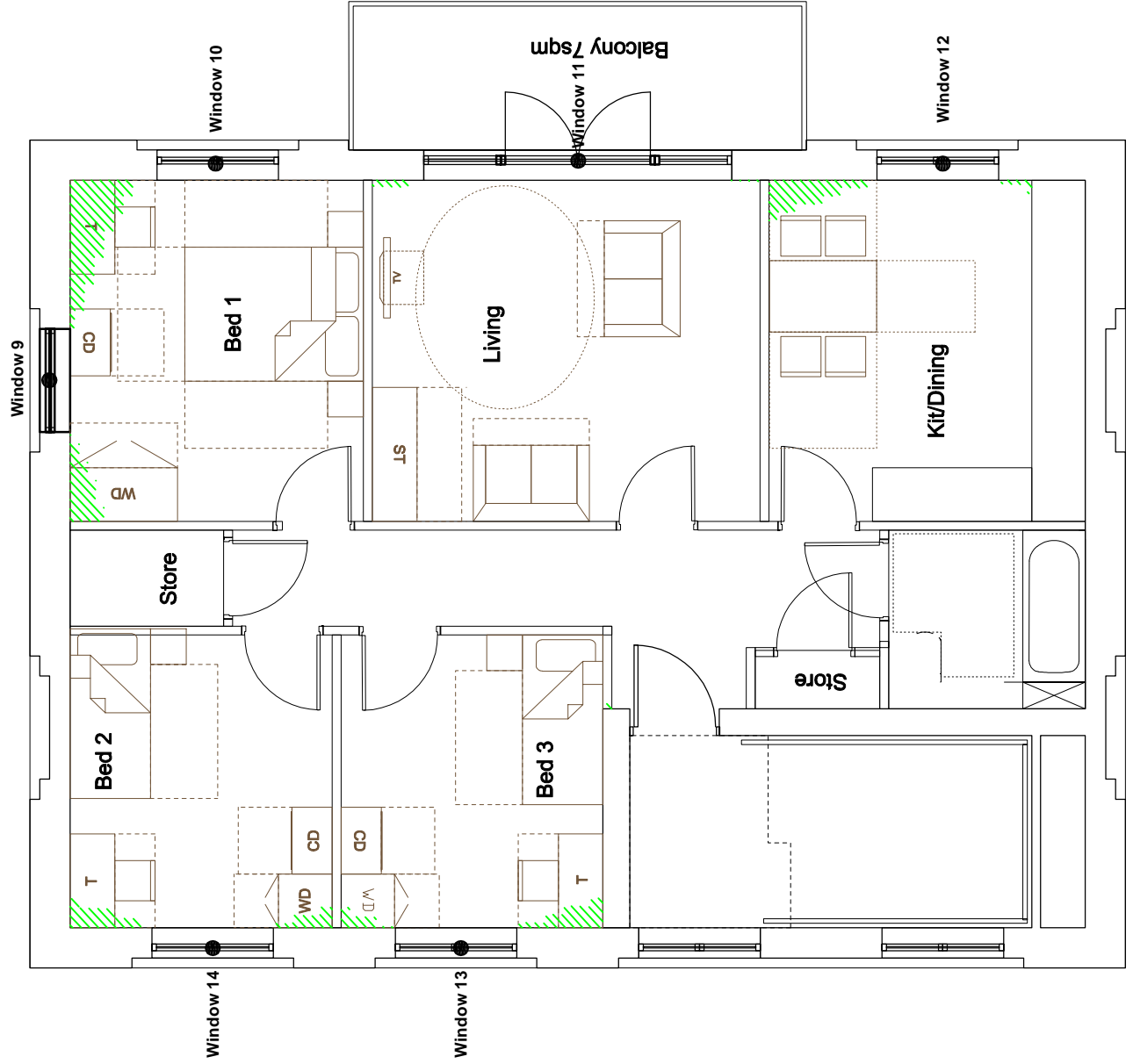
1

Window reference

 Area receives no direct sky light (applied to habitable rooms)

 Area does receive direct sky light.

 Light aperture.



Project Name: **Regents Park Estate, London NW1 4BX**

Drawing Title: **No Sky Line Contours**

Scale: **Do not scale**

Drawing No: **3 of 3**

Rev. -

Rev Date Details of revision



Burley House
16 - 17 High Street
Rayleigh
Essex SS6 7EW

Tel. 0800 197 4836

enquiries @right-of-light.co.uk
www.right-of-light-consulting.com