



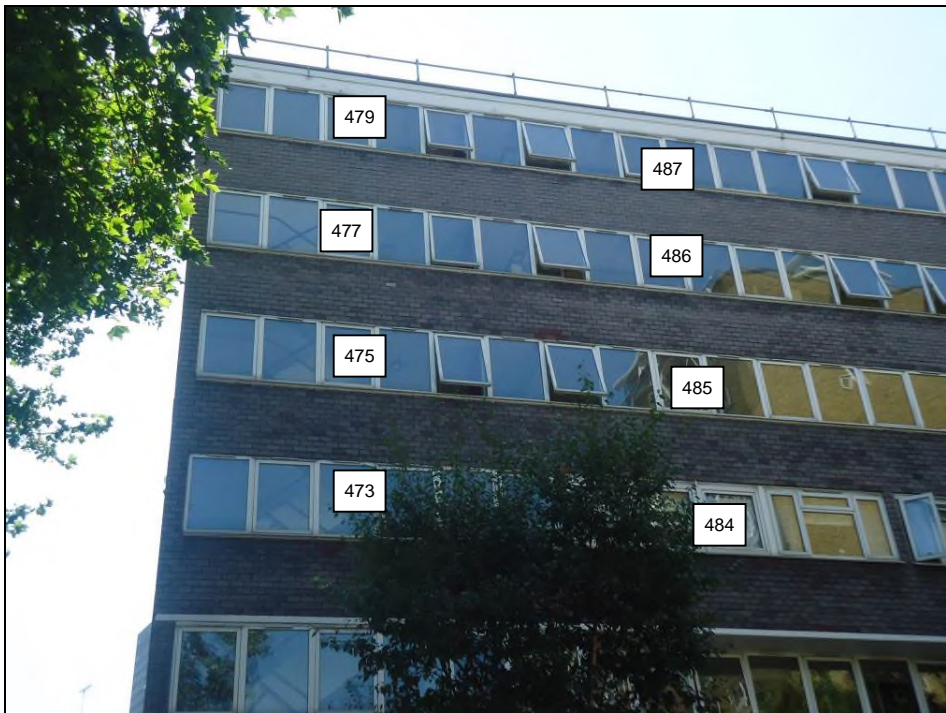
**1 Robert Street**



**1 to 107 Woodhall**



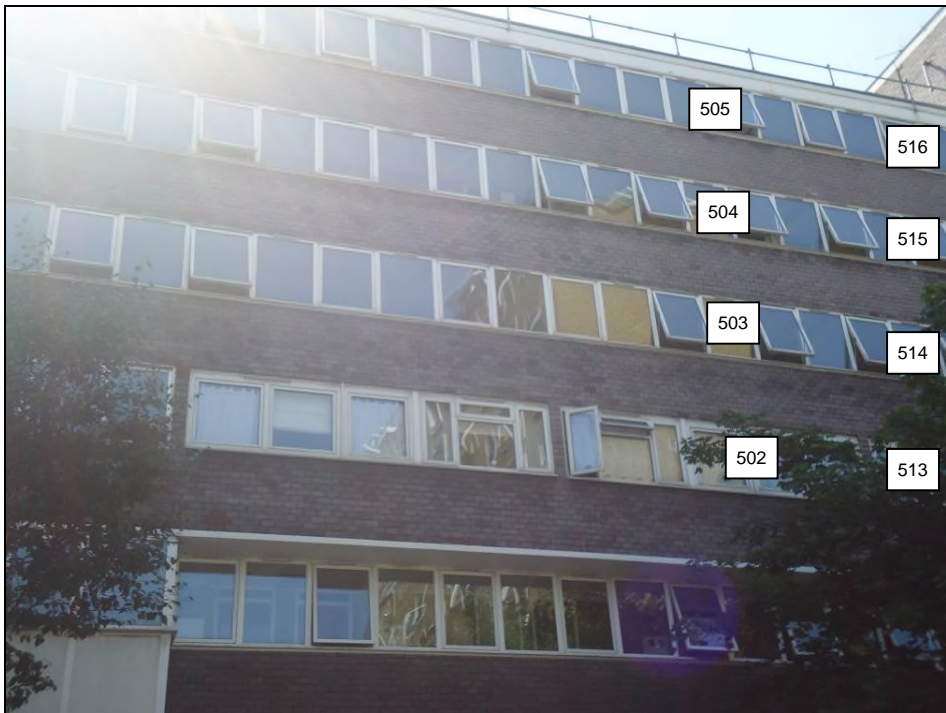
**1 to 107 Woodhall**



**1 to 107 Woodhall**



**1 to 107 Woodhall**



**1 to 107 Woodhall**



**1 to 107 Woodhall**



**1 to 107 Woodhall**

---

## **APPENDIX 2.2**

### **DAYLIGHT AND SUNLIGHT RESULTS**

**Appendix 2.2 - Vertical Sky Component**  
**Regents Park Estate, London NW1 4BX**

Reference	Use Class	Vertical Sky Component			
		Before	After	Loss	Ratio
<u>Rydal Water</u>					
Window 1	Non Habitable	1.9%	1.9%	0.0%	1.0
Window 2	Habitable	12.4%	7.1%	5.3%	0.57
Window 3	Habitable	20.9%	20.9%	0.0%	1.0
Window 4	Habitable	31.5%	23.1%	8.4%	0.73
Window 5	Habitable	6.7%	2.1%	4.6%	0.31
Window 6	Habitable	33.5%	25.3%	8.2%	0.76
Window 7	Habitable	7.4%	2.8%	4.6%	0.38
Window 8	Habitable	28.1%	28.1%	0.0%	1.0
Window 9	Habitable	35.0%	27.7%	7.3%	0.79
Window 10	Habitable	7.8%	3.7%	4.1%	0.47
Window 11	Habitable	36.4%	30.3%	6.1%	0.83
Window 12	Habitable	8.1%	4.7%	3.4%	0.58
Window 13	Habitable	35.6%	35.6%	0.0%	1.0
Window 14	Habitable	37.7%	33.0%	4.7%	0.88
Window 15	Habitable	8.4%	5.8%	2.6%	0.69
Window 16	Habitable	38.7%	35.6%	3.1%	0.92
Window 17	Habitable	8.7%	6.9%	1.8%	0.79
Window 18	Habitable	39.3%	39.3%	0.0%	1.0
Window 19	Habitable	39.3%	37.8%	1.5%	0.96
Window 20	Habitable	8.9%	7.9%	1.0%	0.89
Window 21	Habitable	39.5%	39.5%	0.0%	1.0
Window 22	Habitable	8.9%	8.8%	0.1%	0.99
Window 23	Habitable	39.5%	39.5%	0.0%	1.0
Window 24	Habitable	39.5%	39.5%	0.0%	1.0
Window 25	Habitable	8.9%	8.9%	0.0%	1.0
Window 26	Habitable	12.3%	6.7%	5.6%	0.54
Window 27	Habitable	11.4%	5.8%	5.6%	0.51
Window 28	Habitable	12.2%	6.2%	6.0%	0.51
Window 29	Habitable	35.3%	26.9%	8.4%	0.76
Window 30	Habitable	12.9%	7.5%	5.4%	0.58
Window 31	Habitable	13.6%	8.8%	4.8%	0.65
Window 32	Habitable	14.2%	10.4%	3.8%	0.73
Window 33	Habitable	14.6%	12.1%	2.5%	0.83

**Appendix 2.2 - Vertical Sky Component**  
**Regents Park Estate, London NW1 4BX**

Reference	Use Class	Vertical Sky Component			
		Before	After	Loss	Ratio
Window 34	Habitable	15.0%	13.7%	1.3%	0.91
Window 35	Habitable	15.1%	15.0%	0.1%	0.99
Window 36	Habitable	14.6%	14.6%	0.0%	1.0
Window 37	Non Habitable	22.6%	14.0%	8.6%	0.62
Window 38	Habitable	11.5%	4.9%	6.6%	0.43
Window 39	Non Habitable	26.9%	16.4%	10.5%	0.61
Window 40	Habitable	5.5%	5.5%	0.0%	1.0
Window 41	Habitable	31.8%	20.4%	11.4%	<b>0.64</b>
Window 42	Habitable	6.1%	6.1%	0.0%	1.0
Window 43	Habitable	34.0%	22.7%	11.3%	<b>0.67</b>
Window 44	Habitable	6.6%	6.6%	0.0%	1.0
Window 45	Habitable	35.4%	25.2%	10.2%	0.71
Window 46	Habitable	7.0%	7.0%	0.0%	1.0
Window 47	Habitable	36.7%	28.0%	8.7%	0.76
Window 48	Habitable	7.5%	7.5%	0.0%	1.0
Window 49	Habitable	37.8%	31.1%	6.7%	0.82
Window 50	Habitable	7.9%	7.9%	0.0%	1.0
Window 51	Habitable	38.7%	34.4%	4.3%	0.89
Window 52	Habitable	8.0%	8.0%	0.0%	1.0
Window 53	Habitable	39.2%	37.3%	1.9%	0.95
Window 54	Habitable	8.0%	8.0%	0.0%	1.0
Window 55	Habitable	39.5%	39.5%	0.0%	1.0
Window 56	Habitable	8.1%	8.1%	0.0%	1.0
Window 57	Habitable	39.5%	39.5%	0.0%	1.0
Window 58	Non Habitable	33.1%	20.0%	13.1%	0.6
Window 59	Non Habitable	34.8%	22.5%	12.3%	0.65
Window 60	Non Habitable	36.1%	25.3%	10.8%	0.7
Window 61	Non Habitable	37.2%	28.5%	8.7%	0.77
Window 62	Non Habitable	38.3%	32.0%	6.3%	0.84
Window 63	Non Habitable	39.0%	35.5%	3.5%	0.91
Window 64	Non Habitable	39.4%	38.4%	1.0%	0.97
Window 65	Non Habitable	39.5%	39.5%	0.0%	1.0
Window 66	Non Habitable	9.7%	1.4%	8.3%	0.14

**Appendix 2.2 - Vertical Sky Component**  
**Regents Park Estate, London NW1 4BX**

Reference	Use Class	Vertical Sky Component			
		Before	After	Loss	Ratio
Window 67	Non Habitable	12.8%	3.5%	9.3%	0.27
Window 68	Non Habitable	1.7%	0.8%	0.9%	0.47
Window 69	Non Habitable	16.6%	6.2%	10.4%	0.37
Window 70	Habitable	31.1%	17.9%	13.2%	<b>0.58</b>
Window 71	Habitable	5.4%	2.3%	3.1%	0.43
Window 72	Habitable	33.9%	20.2%	13.7%	<b>0.6</b>
Window 73	Habitable	6.4%	3.1%	3.3%	0.48
Window 74	Habitable	35.4%	23.0%	12.4%	<b>0.65</b>
Window 75	Habitable	7.1%	4.0%	3.1%	0.56
Window 76	Habitable	36.6%	26.1%	10.5%	0.71
Window 77	Habitable	7.6%	5.0%	2.6%	0.66
Window 78	Habitable	37.7%	29.7%	8.0%	0.79
Window 79	Habitable	8.0%	6.1%	1.9%	0.76
Window 80	Habitable	38.7%	33.4%	5.3%	0.86
Window 81	Habitable	8.5%	7.2%	1.3%	0.85
Window 82	Habitable	39.2%	36.9%	2.3%	0.94
Window 83	Habitable	8.8%	8.2%	0.6%	0.93
Window 84	Habitable	39.4%	39.4%	0.0%	1.0
Window 85	Habitable	8.9%	8.8%	0.1%	0.99
Window 86	Habitable	39.5%	39.5%	0.0%	1.0
Window 87	Habitable	8.9%	8.9%	0.0%	1.0
Window 88	Non Habitable	21.0%	12.2%	8.8%	0.58
Window 89	Habitable	9.5%	2.9%	6.6%	0.31
Window 90	Habitable	30.3%	17.1%	13.2%	0.56
Window 91	Habitable	9.9%	0.6%	9.3%	0.06
Window 92	Habitable	33.7%	19.5%	14.2%	0.58
Window 93	Habitable	12.1%	0.9%	11.2%	0.07
Window 94	Habitable	13.0%	2.7%	10.3%	0.21
Window 95	Habitable	13.6%	4.8%	8.8%	0.35
Window 96	Habitable	14.2%	7.3%	6.9%	0.51
Window 97	Habitable	14.6%	9.9%	4.7%	0.68
Window 98	Habitable	14.9%	12.6%	2.3%	0.85
Window 99	Habitable	15.1%	14.9%	0.2%	0.99



**Appendix 2.2 - Vertical Sky Component**  
**Regents Park Estate, London NW1 4BX**

Reference	Use Class	Vertical Sky Component			
		Before	After	Loss	Ratio
Window 100	Habitable	14.5%	14.5%	0.0%	1.0
Window 101	Habitable	6.4%	4.8%	1.6%	0.75
Window 102	Habitable	29.7%	16.4%	13.3%	<b>0.55</b>
Window 103	Habitable	6.9%	5.3%	1.6%	0.77
Window 104	Habitable	33.3%	18.8%	14.5%	<b>0.56</b>
Window 105	Habitable	7.3%	5.8%	1.5%	0.79
Window 106	Habitable	35.0%	21.8%	13.2%	<b>0.62</b>
Window 107	Habitable	7.5%	6.2%	1.3%	0.83
Window 108	Habitable	36.3%	25.1%	11.2%	<b>0.69</b>
Window 109	Habitable	7.7%	6.7%	1.0%	0.87
Window 110	Habitable	37.5%	29.0%	8.5%	0.77
Window 111	Habitable	7.9%	7.2%	0.7%	0.91
Window 112	Habitable	38.5%	33.0%	5.5%	0.86
Window 113	Habitable	8.0%	7.6%	0.4%	0.95
Window 114	Habitable	39.2%	36.7%	2.5%	0.94
Window 115	Habitable	8.0%	8.0%	0.0%	1.0
Window 116	Habitable	39.4%	39.4%	0.0%	1.0
Window 117	Habitable	8.1%	8.1%	0.0%	1.0
Window 118	Habitable	39.5%	39.5%	0.0%	1.0
Window 119	Non Habitable	20.0%	11.7%	8.3%	0.59
Window 120	Habitable	8.5%	2.3%	6.2%	0.27
Window 121	Non Habitable	19.3%	11.4%	7.9%	0.59
Window 122	Habitable	8.1%	2.1%	6.0%	0.26
Window 123	Habitable	29.2%	16.0%	13.2%	<b>0.55</b>
Window 124	Habitable	3.7%	2.3%	1.4%	0.62
Window 125	Habitable	32.9%	18.6%	14.3%	<b>0.57</b>
Window 126	Habitable	4.7%	3.1%	1.6%	0.66
Window 127	Habitable	34.6%	21.5%	13.1%	<b>0.62</b>
Window 128	Habitable	5.6%	4.1%	1.5%	0.73
Window 129	Habitable	36.0%	25.0%	11.0%	<b>0.69</b>
Window 130	Habitable	6.5%	5.2%	1.3%	0.8
Window 131	Habitable	37.3%	28.9%	8.4%	0.77
Window 132	Habitable	7.3%	6.3%	1.0%	0.86

**Appendix 2.2 - Vertical Sky Component**  
**Regents Park Estate, London NW1 4BX**

Reference	Use Class	Vertical Sky Component			
		Before	After	Loss	Ratio
Window 133	Habitable	38.5%	33.0%	5.5%	0.86
Window 134	Habitable	8.1%	7.5%	0.6%	0.93
Window 135	Habitable	39.2%	36.8%	2.4%	0.94
Window 136	Habitable	8.8%	8.5%	0.3%	0.97
Window 137	Habitable	39.4%	39.4%	0.0%	1.0
Window 138	Habitable	8.9%	8.9%	0.0%	1.0
Window 139	Habitable	39.5%	39.5%	0.0%	1.0
Window 140	Habitable	8.9%	8.9%	0.0%	1.0
Window 141	Non Habitable	18.7%	11.1%	7.6%	0.59
Window 142	Habitable	8.3%	2.4%	5.9%	0.29
Window 143	Habitable	9.9%	1.2%	8.7%	0.12
Window 144	Habitable	12.3%	1.8%	10.5%	0.15
Window 145	Habitable	13.2%	3.4%	9.8%	0.26
Window 146	Habitable	13.7%	5.4%	8.3%	0.39
Window 147	Habitable	14.2%	7.7%	6.5%	0.54
Window 148	Habitable	14.7%	10.3%	4.4%	0.7
Window 149	Habitable	15.0%	12.8%	2.2%	0.85
Window 150	Habitable	15.0%	14.8%	0.2%	0.99
Window 151	Habitable	39.5%	39.5%	0.0%	1.0
Window 152	Habitable	14.5%	14.5%	0.0%	1.0
Window 153	Non Habitable	13.8%	4.9%	8.9%	0.36
Window 154	Non Habitable	10.7%	3.1%	7.6%	0.29
Window 155	Non Habitable	1.5%	1.2%	0.3%	0.8
Window 156	Non Habitable	9.5%	2.0%	7.5%	0.21
Window 157	Non Habitable	21.4%	13.5%	7.9%	0.63
Window 158	Habitable	6.6%	3.4%	3.2%	0.52
Window 159	Habitable	27.9%	16.0%	11.9%	<b>0.57</b>
Window 160	Habitable	7.1%	4.0%	3.1%	0.56
Window 161	Habitable	31.2%	18.6%	12.6%	<b>0.6</b>
Window 162	Habitable	7.4%	4.6%	2.8%	0.62
Window 163	Habitable	33.1%	21.6%	11.5%	<b>0.65</b>
Window 164	Habitable	7.6%	5.2%	2.4%	0.68
Window 165	Habitable	34.8%	25.2%	9.6%	0.72

**Appendix 2.2 - Vertical Sky Component**  
**Regents Park Estate, London NW1 4BX**

Reference	Use Class	Vertical Sky Component			
		Before	After	Loss	Ratio
Window 166	Habitable	7.7%	5.9%	1.8%	0.77
Window 167	Habitable	36.6%	29.2%	7.4%	0.8
Window 168	Habitable	7.8%	6.6%	1.2%	0.85
Window 169	Habitable	38.2%	33.3%	4.9%	0.87
Window 170	Habitable	8.0%	7.4%	0.6%	0.93
Window 171	Habitable	39.2%	37.1%	2.1%	0.95
Window 172	Habitable	8.0%	8.0%	0.0%	1.0
Window 173	Habitable	39.4%	39.4%	0.0%	1.0
Window 174	Habitable	8.0%	8.0%	0.0%	1.0
Window 175	Habitable	39.5%	39.5%	0.0%	1.0
Window 176	Non Habitable	28.6%	17.2%	11.4%	0.6
Window 177	Non Habitable	30.9%	20.0%	10.9%	0.65
Window 178	Non Habitable	32.9%	23.4%	9.5%	0.71
Window 179	Non Habitable	35.0%	27.3%	7.7%	0.78
Window 180	Non Habitable	37.0%	31.5%	5.5%	0.85
Window 181	Non Habitable	38.7%	35.6%	3.1%	0.92
Window 182	Non Habitable	39.4%	38.6%	0.8%	0.98
Window 183	Non Habitable	39.5%	39.5%	0.0%	1.0
Window 184	Non Habitable	14.1%	8.3%	5.8%	0.59
Window 185	Habitable	6.2%	1.9%	4.3%	0.31
Window 186	Habitable	25.1%	15.5%	9.6%	<b>0.62</b>
Window 187	Habitable	0.9%	0.9%	0.0%	1.0
Window 188	Habitable	28.2%	18.2%	10.0%	<b>0.65</b>
Window 189	Habitable	1.7%	1.7%	0.0%	1.0
Window 190	Habitable	30.4%	21.3%	9.1%	0.7
Window 191	Habitable	2.9%	2.9%	0.0%	1.0
Window 192	Habitable	32.7%	25.1%	7.6%	0.77
Window 193	Habitable	4.2%	4.2%	0.0%	1.0
Window 194	Habitable	35.2%	29.4%	5.8%	0.84
Window 195	Habitable	5.8%	5.8%	0.0%	1.0
Window 196	Habitable	37.6%	33.8%	3.8%	0.9
Window 197	Habitable	8.7%	8.7%	0.0%	1.0
Window 198	Habitable	39.2%	37.6%	1.6%	0.96

**Appendix 2.2 - Vertical Sky Component**  
**Regents Park Estate, London NW1 4BX**

Reference	Use Class	Vertical Sky Component			
		Before	After	Loss	Ratio
Window 199	Habitable	8.8%	8.8%	0.0%	1.0
Window 200	Habitable	39.4%	39.4%	0.0%	1.0
Window 201	Habitable	8.9%	8.9%	0.0%	1.0
Window 202	Habitable	39.5%	39.5%	0.0%	1.0
Window 203	Habitable	8.9%	8.9%	0.0%	1.0
Window 204	Non Habitable	15.7%	9.8%	5.9%	0.62
Window 205	Habitable	6.5%	2.4%	4.1%	0.37
Window 206	Habitable	23.4%	15.0%	8.4%	0.64
Window 207	Habitable	7.6%	3.0%	4.6%	0.39
Window 208	Habitable	8.7%	3.6%	5.1%	0.41
Window 209	Habitable	9.5%	4.9%	4.6%	0.52
Window 210	Habitable	10.8%	6.9%	3.9%	0.64
Window 211	Habitable	12.3%	9.2%	3.1%	0.75
Window 212	Habitable	13.8%	11.7%	2.1%	0.85
Window 213	Habitable	15.0%	14.0%	1.0%	0.93
Window 214	Habitable	15.1%	15.0%	0.1%	0.99
Window 215	Habitable	14.5%	14.5%	0.0%	1.0
Window 216	Non Habitable	14.1%	8.5%	5.6%	0.6
Window 217	Habitable	5.5%	1.7%	3.8%	0.31
Window 218	Habitable	6.2%	2.0%	4.2%	0.32
Window 219	Habitable	21.3%	13.9%	7.4%	0.65
Window 220	Habitable	19.2%	19.2%	0.0%	1.0
Window 221	Habitable	7.0%	2.7%	4.3%	0.39
Window 222	Habitable	23.9%	16.6%	7.3%	<b>0.69</b>
Window 223	Habitable	7.4%	3.5%	3.9%	0.47
Window 224	Habitable	26.4%	19.9%	6.5%	0.75
Window 225	Habitable	24.8%	24.8%	0.0%	1.0
Window 226	Habitable	7.5%	4.3%	3.2%	0.57
Window 227	Habitable	29.3%	24.0%	5.3%	0.82
Window 228	Habitable	7.7%	5.3%	2.4%	0.69
Window 229	Habitable	32.8%	28.8%	4.0%	0.88
Window 230	Habitable	31.7%	31.7%	0.0%	1.0
Window 231	Habitable	7.9%	6.2%	1.7%	0.78

**Appendix 2.2 - Vertical Sky Component**  
**Regents Park Estate, London NW1 4BX**

Reference	Use Class	Vertical Sky Component			
		Before	After	Loss	Ratio
Window 232	Habitable	36.5%	33.9%	2.6%	0.93
Window 233	Habitable	8.0%	7.2%	0.8%	0.9
Window 234	Habitable	39.1%	38.0%	1.1%	0.97
Window 235	Habitable	38.0%	38.0%	0.0%	1.0
Window 236	Habitable	8.1%	8.0%	0.1%	0.99
Window 237	Habitable	39.4%	39.4%	0.0%	1.0
Window 238	Habitable	8.0%	8.0%	0.0%	1.0
Window 239	Habitable	39.5%	39.5%	0.0%	1.0
Window 240	Habitable	39.5%	39.5%	0.0%	1.0
Window 241	Habitable	39.3%	39.3%	0.0%	1.0
Window 242	Habitable	37.4%	37.4%	0.0%	1.0
Window 243	Habitable	39.5%	39.5%	0.0%	1.0
Window 244	Habitable	38.6%	38.6%	0.0%	1.0
Window 245	Habitable	0.1%	0.1%	0.0%	1.0
Window 246	Habitable	39.4%	39.4%	0.0%	1.0
Window 247	Habitable	39.4%	39.4%	0.0%	1.0
Window 248	Habitable	38.7%	38.7%	0.0%	1.0
Window 249	Habitable	39.5%	39.5%	0.0%	1.0
Window 250	Habitable	37.4%	37.4%	0.0%	1.0
Window 251	Habitable	39.3%	39.3%	0.0%	1.0
<u>The Tarns</u>					
Window 252	Habitable	16.0%	11.0%	5.0%	<b>0.69</b>
Window 253	Habitable	20.9%	12.3%	8.6%	<b>0.59</b>
Window 254	Habitable	26.3%	13.9%	12.4%	<b>0.53</b>
Window 255	Habitable	28.0%	15.9%	12.1%	<b>0.57</b>
Window 256	Habitable	29.5%	18.4%	11.1%	<b>0.62</b>
Window 257	Habitable	31.0%	22.0%	9.0%	0.71
Window 258	Habitable	32.8%	26.3%	6.5%	0.8
Window 259	Non Habitable	5.9%	5.1%	0.8%	0.86
Window 260	Habitable	29.2%	23.4%	5.8%	0.8
Window 261	Habitable	15.9%	13.6%	2.3%	0.86
Window 262	Habitable	32.3%	26.0%	6.3%	0.8
Window 263	Habitable	19.2%	16.3%	2.9%	0.85

**Appendix 2.2 - Vertical Sky Component**  
**Regents Park Estate, London NW1 4BX**

Reference	Use Class	Vertical Sky Component			
		Before	After	Loss	Ratio
Window 264	Habitable	35.2%	29.6%	5.6%	0.84
Window 265	Habitable	21.9%	18.8%	3.1%	0.86
Window 266	Habitable	38.4%	35.1%	3.3%	0.91
Window 267	Non Habitable	27.7%	24.1%	3.6%	0.87
Window 268	Habitable	29.0%	25.1%	3.9%	0.87
Window 269	Habitable	30.4%	27.1%	3.3%	0.89
Window 270	Habitable	32.0%	28.1%	3.9%	0.88
Window 271	Habitable	33.4%	30.5%	2.9%	0.91
Window 272	Habitable	34.9%	31.8%	3.1%	0.91
Window 273	Habitable	36.6%	34.8%	1.8%	0.95
Window 274	Habitable	38.5%	36.8%	1.7%	0.96
Window 275	Non Habitable	27.5%	24.5%	3.0%	0.89
Window 276	Habitable	14.5%	12.7%	1.8%	0.88
Window 277	Habitable	30.3%	27.6%	2.7%	0.91
Window 278	Habitable	17.0%	15.0%	2.0%	0.88
Window 279	Habitable	33.2%	30.9%	2.3%	0.93
Window 280	Habitable	20.2%	18.2%	2.0%	0.9
Window 281	Habitable	36.8%	35.2%	1.6%	0.96
Window 282	Habitable	38.6%	37.5%	1.1%	0.97
<u>112 Hampstead Street</u>					
Window 283	Non Habitable	29.5%	29.5%	0.0%	1.0
Window 284	Non Habitable	29.7%	29.7%	0.0%	1.0
Window 285	Non Habitable	29.9%	29.9%	0.0%	1.0
Window 286	Non Habitable	30.1%	30.1%	0.0%	1.0
Window 287	Non Habitable	26.0%	22.3%	3.7%	0.86
Window 288	Non Habitable	26.0%	22.0%	4.0%	0.85
Window 289	Non Habitable	26.0%	21.8%	4.2%	0.84
Window 290	Non Habitable	32.5%	32.5%	0.0%	1.0
Window 291	Non Habitable	32.5%	32.5%	0.0%	1.0
Window 292	Non Habitable	32.6%	32.6%	0.0%	1.0
Window 293	Non Habitable	29.0%	26.1%	2.9%	0.9
Window 294	Non Habitable	29.0%	25.8%	3.2%	0.89
Window 295	Non Habitable	34.7%	34.7%	0.0%	1.0

**Appendix 2.2 - Vertical Sky Component**  
**Regents Park Estate, London NW1 4BX**

Reference	Use Class	Vertical Sky Component			
		Before	After	Loss	Ratio
Window 296	Non Habitable	34.7%	34.7%	0.0%	1.0
Window 297	Non Habitable	34.7%	34.7%	0.0%	1.0
Window 298	Non Habitable	31.6%	29.4%	2.2%	0.93
Window 299	Non Habitable	31.6%	29.2%	2.4%	0.92
Window 300	Non Habitable	36.4%	36.4%	0.0%	1.0
Window 301	Non Habitable	36.4%	36.4%	0.0%	1.0
Window 302	Non Habitable	36.4%	36.4%	0.0%	1.0
Window 303	Non Habitable	33.9%	32.5%	1.4%	0.96
Window 304	Non Habitable	33.9%	32.3%	1.6%	0.95
Window 305	Non Habitable	26.4%	25.7%	0.7%	0.97
Window 306	Non Habitable	24.3%	23.7%	0.6%	0.98
Window 307	Non Habitable	32.1%	32.1%	0.0%	1.0
Window 308	Non Habitable	32.7%	32.7%	0.0%	1.0
Window 309	Non Habitable	34.5%	34.5%	0.0%	1.0
Window 310	Non Habitable	34.5%	34.5%	0.0%	1.0
Window 311	Non Habitable	32.5%	31.8%	0.7%	0.98
Window 312	Non Habitable	32.9%	32.1%	0.8%	0.98
Window 313	Non Habitable	28.8%	25.1%	3.7%	0.87
Window 314	Non Habitable	31.3%	28.4%	2.9%	0.91
Window 315	Non Habitable	34.0%	32.2%	1.8%	0.95
Window 316	Non Habitable	26.2%	21.4%	4.8%	0.82
Window 317	Non Habitable	26.3%	21.3%	5.0%	0.81
Window 318	Non Habitable	26.4%	21.1%	5.3%	0.8
Window 319	Non Habitable	29.1%	25.0%	4.1%	0.86
Window 320	Non Habitable	29.2%	24.8%	4.4%	0.85
Window 321	Non Habitable	31.6%	28.5%	3.1%	0.9
Window 322	Non Habitable	31.7%	28.3%	3.4%	0.89
Window 323	Non Habitable	29.4%	27.8%	1.6%	0.95
Window 324	Non Habitable	27.2%	25.9%	1.3%	0.95
Window 325	Non Habitable	33.8%	31.8%	2.0%	0.94
Window 326	Non Habitable	33.8%	31.6%	2.2%	0.93
Window 327	Non Habitable	34.8%	33.7%	1.1%	0.97
Window 328	Non Habitable	34.1%	33.2%	0.9%	0.97

**Appendix 2.2 - Vertical Sky Component**  
**Regents Park Estate, London NW1 4BX**

Reference	Use Class	Vertical Sky Component			
		Before	After	Loss	Ratio
Window 329	Non Habitable	32.6%	32.0%	0.6%	0.98
Window 330	Non Habitable	32.6%	32.1%	0.5%	0.98
Window 331	Non Habitable	35.3%	35.3%	0.0%	1.0
Window 332	Non Habitable	34.5%	34.5%	0.0%	1.0
Window 333	Non Habitable	24.8%	24.8%	0.0%	1.0
Window 334	Non Habitable	26.2%	26.2%	0.0%	1.0
Window 335	Non Habitable	30.7%	29.7%	1.0%	0.97
Window 336	Non Habitable	30.6%	29.6%	1.0%	0.97
Window 337	Non Habitable	14.1%	12.6%	1.5%	0.89
Window 338	Non Habitable	15.6%	14.5%	1.1%	0.93
Window 339	Non Habitable	26.6%	20.6%	6.0%	0.77
Window 340	Non Habitable	26.7%	20.2%	6.5%	0.76
Window 341	Non Habitable	26.8%	20.0%	6.8%	0.75
Window 342	Non Habitable	28.8%	24.2%	4.6%	0.84
Window 343	Non Habitable	29.5%	24.3%	5.2%	0.82
Window 344	Non Habitable	29.7%	24.0%	5.7%	0.81
Window 345	Non Habitable	29.8%	23.8%	6.0%	0.8
Window 346	Non Habitable	27.0%	19.8%	7.2%	0.73
Window 347	Non Habitable	27.1%	19.8%	7.3%	0.73
Window 348	Non Habitable	27.3%	19.9%	7.4%	0.73
Window 349	Non Habitable	30.0%	23.7%	6.3%	0.79
Window 350	Non Habitable	30.2%	23.8%	6.4%	0.79
Window 351	Non Habitable	30.3%	24.0%	6.3%	0.79
Window 352	Non Habitable	30.5%	24.4%	6.1%	0.8
Window 353	Non Habitable	30.6%	24.9%	5.7%	0.81
Window 354	Non Habitable	30.7%	25.6%	5.1%	0.83
Window 355	Non Habitable	30.9%	29.3%	1.6%	0.95
Window 356	Non Habitable	21.9%	21.8%	0.1%	1.0
Window 357	Non Habitable	5.6%	4.6%	1.0%	0.82
Window 358	Non Habitable	3.4%	2.2%	1.2%	0.65
Window 359	Non Habitable	0.5%	0.1%	0.4%	0.2
Window 360	Habitable	15.0%	14.7%	0.3%	0.98
Window 361	Habitable	21.3%	19.1%	2.2%	0.9



**Appendix 2.2 - Vertical Sky Component**  
**Regents Park Estate, London NW1 4BX**

Reference	Use Class	Vertical Sky Component			
		Before	After	Loss	Ratio
Window 362	Habitable	25.6%	24.3%	1.3%	0.95
Window 363	Habitable	20.9%	20.2%	0.7%	0.97
Window 364	Habitable	28.5%	26.0%	2.5%	0.91
Window 365	Habitable	30.8%	29.3%	1.5%	0.95
Window 366	Habitable	23.6%	22.7%	0.9%	0.96
Window 367	Habitable	31.4%	28.6%	2.8%	0.91
Window 368	Habitable	32.8%	31.0%	1.8%	0.95
Window 369	Habitable	24.4%	23.4%	1.0%	0.96
Window 370	Habitable	32.4%	29.6%	2.8%	0.91
Window 371	Habitable	33.7%	31.9%	1.8%	0.95
Window 372	Habitable	9.0%	9.0%	0.0%	1.0
Window 373	Habitable	28.1%	25.5%	2.6%	0.91
Window 374	Habitable	34.2%	32.4%	1.8%	0.95
Window 375	Habitable	34.2%	32.5%	1.7%	0.95
Window 376	Habitable	32.0%	30.3%	1.7%	0.95
Window 377	Habitable	33.4%	30.8%	2.6%	0.92
Window 378	Habitable	33.5%	31.1%	2.4%	0.93
Window 379	Habitable	27.9%	27.9%	0.0%	1.0
Window 380	Habitable	30.5%	30.5%	0.0%	1.0
Window 381	Habitable	30.5%	30.5%	0.0%	1.0
Window 382	Habitable	35.1%	33.5%	1.6%	0.95
Window 383	Habitable	35.2%	33.8%	1.4%	0.96
Window 384	Habitable	30.4%	30.4%	0.0%	1.0
Window 385	Habitable	33.4%	33.4%	0.0%	1.0
Window 386	Habitable	33.5%	33.5%	0.0%	1.0
Window 387	Habitable	30.4%	29.6%	0.8%	0.97
Window 388	Habitable	22.5%	22.5%	0.0%	1.0
Window 389	Habitable	22.2%	22.2%	0.0%	1.0
Window 390	Habitable	0.5%	0.5%	0.0%	1.0
Window 391	Habitable	30.8%	30.5%	0.3%	0.99
Window 392	Habitable	30.8%	30.5%	0.3%	0.99
Window 393	Habitable	31.1%	27.9%	3.2%	0.9
Window 394	Habitable	22.8%	22.8%	0.0%	1.0

**Appendix 2.2 - Vertical Sky Component**  
**Regents Park Estate, London NW1 4BX**

Reference	Use Class	Vertical Sky Component			
		Before	After	Loss	Ratio
Window 395	Habitable	31.9%	29.3%	2.6%	0.92
Window 396	Habitable	26.0%	26.0%	0.0%	1.0
Window 397	Habitable	32.1%	30.1%	2.0%	0.94
Window 398	Habitable	25.1%	25.1%	0.0%	1.0
<u>110 Hampstead Street</u>					
Window 399	Habitable	18.0%	18.0%	0.0%	1.0
Window 400	Habitable	31.3%	30.4%	0.9%	0.97
Window 401	Habitable	34.4%	33.8%	0.6%	0.98
Window 402	Habitable	36.3%	35.9%	0.4%	0.99
Window 403	Habitable	36.2%	35.8%	0.4%	0.99
Window 404	Habitable	38.1%	37.9%	0.2%	0.99
Window 405	Habitable	37.6%	37.4%	0.2%	0.99
Window 406	Non Habitable	26.0%	23.9%	2.1%	0.92
Window 407	Non Habitable	20.4%	18.6%	1.8%	0.91
Window 408	Non Habitable	5.2%	3.6%	1.6%	0.69
Window 409	Non Habitable	28.7%	26.9%	1.8%	0.94
Window 410	Non Habitable	22.9%	21.2%	1.7%	0.93
Window 411	Habitable	31.8%	30.7%	1.1%	0.97
Window 412	Habitable	34.6%	33.5%	1.1%	0.97
Window 413	Habitable	34.7%	34.0%	0.7%	0.98
Window 414	Habitable	35.9%	35.1%	0.8%	0.98
Window 415	Habitable	36.5%	36.0%	0.5%	0.99
Window 416	Habitable	36.7%	36.3%	0.4%	0.99
Window 417	Habitable	90.9%	90.9%	0.0%	1.0
Window 418	Habitable	92.7%	92.7%	0.0%	1.0
Window 419	Habitable	91.1%	91.1%	0.0%	1.0
Window 420	Habitable	92.9%	92.9%	0.0%	1.0
Window 421	Habitable	33.5%	32.3%	1.2%	0.96
Window 422	Habitable	32.6%	31.1%	1.5%	0.95
Window 423	Habitable	35.1%	34.2%	0.9%	0.97
Window 424	Habitable	36.1%	35.5%	0.6%	0.98
Window 425	Habitable	37.0%	36.6%	0.4%	0.99
Window 426	Habitable	33.5%	32.5%	1.0%	0.97

**Appendix 2.2 - Vertical Sky Component**  
**Regents Park Estate, London NW1 4BX**

Reference	Use Class	Vertical Sky Component			
		Before	After	Loss	Ratio
Window 427	Habitable	35.1%	34.4%	0.7%	0.98
Window 428	Habitable	36.2%	35.7%	0.5%	0.99
Window 429	Habitable	37.0%	36.7%	0.3%	0.99
Window 430	Habitable	33.4%	32.5%	0.9%	0.97
Window 431	Habitable	35.3%	34.6%	0.7%	0.98
Window 432	Habitable	36.3%	35.8%	0.5%	0.99
Window 433	Habitable	37.1%	36.8%	0.3%	0.99
Window 434	Habitable	37.8%	37.6%	0.2%	0.99
Window 435	Habitable	37.8%	37.6%	0.2%	0.99
Window 436	Habitable	37.9%	37.8%	0.1%	1.0
Window 437	Habitable	60.1%	60.1%	0.0%	1.0
Window 438	Habitable	61.7%	61.7%	0.0%	1.0
Window 439	Habitable	36.9%	36.9%	0.0%	1.0
Window 440	Habitable	24.9%	24.9%	0.0%	1.0
Window 441	Habitable	29.5%	28.8%	0.7%	0.98
Window 442	Habitable	38.6%	38.6%	0.0%	1.0
Window 443	Habitable	38.7%	38.7%	0.0%	1.0
Window 444	Habitable	38.9%	38.9%	0.0%	1.0
Window 445	Habitable	29.0%	28.3%	0.7%	0.98
Window 446	Habitable	39.1%	39.1%	0.0%	1.0
Window 447	Habitable	35.7%	35.1%	0.6%	0.98
Window 448	Habitable	39.5%	39.5%	0.0%	1.0
Window 449	Habitable	36.7%	36.4%	0.3%	0.99
Window 450	Habitable	39.5%	39.5%	0.0%	1.0
Window 451	Habitable	37.3%	37.1%	0.2%	0.99
Window 452	Habitable	39.5%	39.5%	0.0%	1.0
Window 453	Habitable	38.0%	37.8%	0.2%	0.99
Window 454	Habitable	39.5%	39.5%	0.0%	1.0
<u>1 Robert Street</u>					
Window 455	Non Domestic	25.1%	21.0%	4.1%	0.84
Window 456	Non Domestic	15.0%	11.2%	3.8%	0.75
Window 457	Non Domestic	27.9%	22.8%	5.1%	0.82
Window 458	Non Domestic	21.1%	16.3%	4.8%	0.77

**Appendix 2.2 - Vertical Sky Component**  
**Regents Park Estate, London NW1 4BX**

Reference	Use Class	Vertical Sky Component			
		Before	After	Loss	Ratio
Window 459	Non Domestic	25.6%	20.1%	5.5%	0.79
Window 460	Non Domestic	9.2%	9.0%	0.2%	0.98
Window 461	Non Domestic	17.7%	17.5%	0.2%	0.99
<u>1 to 107 Woodhall Street</u>					
Window 462	Non Habitable	19.6%	19.1%	0.5%	0.97
Window 463	Non Habitable	15.2%	9.3%	5.9%	0.61
Window 464	Non Habitable	2.5%	0.7%	1.8%	0.28
Window 465	Non Habitable	10.1%	5.2%	4.9%	0.51
Window 466	Non Habitable	26.7%	26.2%	0.5%	0.98
Window 467	Non Habitable	28.3%	22.7%	5.6%	0.8
Window 468	Non Habitable	10.2%	10.2%	0.0%	1.0
Window 469	Non Habitable	31.0%	30.5%	0.5%	0.98
Window 470	Non Habitable	29.6%	24.5%	5.1%	0.83
Window 471	Non Habitable	2.9%	2.9%	0.0%	1.0
Window 472	Non Habitable	34.6%	34.2%	0.4%	0.99
Window 473	Non Habitable	30.9%	26.3%	4.6%	0.85
Window 474	Non Habitable	35.7%	35.3%	0.4%	0.99
Window 475	Non Habitable	32.2%	28.3%	3.9%	0.88
Window 476	Non Habitable	36.7%	36.4%	0.3%	0.99
Window 477	Non Habitable	33.5%	30.4%	3.1%	0.91
Window 478	Non Habitable	37.6%	37.4%	0.2%	0.99
Window 479	Non Habitable	34.7%	32.5%	2.2%	0.94
Window 480	Non Habitable	7.1%	4.1%	3.0%	0.58
Window 481	Non Habitable	13.1%	9.5%	3.6%	0.73
Window 482	Habitable	23.7%	19.2%	4.5%	0.81
Window 483	Habitable	7.0%	3.7%	3.3%	0.53
Window 484	Habitable	30.0%	26.1%	3.9%	0.87
Window 485	Habitable	31.3%	28.0%	3.3%	0.89
Window 486	Habitable	32.7%	30.0%	2.7%	0.92
Window 487	Habitable	34.0%	32.1%	1.9%	0.94
Window 488	Habitable	19.4%	14.5%	4.9%	0.75
Window 489	Habitable	23.8%	19.0%	4.8%	0.8
Window 490	Habitable	23.2%	18.6%	4.6%	0.8

**Appendix 2.2 - Vertical Sky Component**  
**Regents Park Estate, London NW1 4BX**

Reference	Use Class	Vertical Sky Component			
		Before	After	Loss	Ratio
Window 491	Habitable	24.7%	20.1%	4.6%	0.81
Window 492	Habitable	24.6%	20.2%	4.4%	0.82
Window 493	Habitable	21.1%	16.8%	4.3%	0.8
Window 494	Habitable	20.7%	16.6%	4.1%	0.8
Window 495	Habitable	24.6%	20.6%	4.0%	0.84
Window 496	Habitable	24.7%	20.8%	3.9%	0.84
Window 497	Habitable	24.7%	20.9%	3.8%	0.85
Window 498	Habitable	24.5%	20.9%	3.6%	0.85
Window 499	Habitable	19.8%	16.2%	3.6%	0.82
Window 500	Habitable	23.9%	20.0%	3.9%	0.84
Window 501	Habitable	7.0%	4.1%	2.9%	0.59
Window 502	Habitable	29.3%	26.0%	3.3%	0.89
Window 503	Habitable	30.6%	27.8%	2.8%	0.91
Window 504	Habitable	31.9%	29.8%	2.1%	0.93
Window 505	Habitable	33.3%	31.8%	1.5%	0.95
Window 506	Habitable	18.5%	16.8%	1.7%	0.91
Window 507	Habitable	24.4%	21.1%	3.3%	0.86
Window 508	Habitable	24.3%	21.0%	3.3%	0.86
Window 509	Habitable	22.7%	19.5%	3.2%	0.86
Window 510	Habitable	16.0%	12.9%	3.1%	0.81
Window 511	Habitable	23.7%	20.5%	3.2%	0.86
Window 512	Habitable	7.4%	4.9%	2.5%	0.66
Window 513	Habitable	29.3%	26.6%	2.7%	0.91
Window 514	Habitable	30.4%	28.3%	2.1%	0.93
Window 515	Habitable	31.7%	30.0%	1.7%	0.95
Window 516	Habitable	33.0%	31.7%	1.3%	0.96
Window 517	Non Habitable	8.7%	6.5%	2.2%	0.75
Window 518	Non Habitable	7.4%	5.3%	2.1%	0.72
Window 519	Non Habitable	27.8%	25.3%	2.5%	0.91
Window 520	Non Habitable	6.3%	6.3%	0.0%	1.0
Window 521	Habitable	28.7%	26.5%	2.2%	0.92
Window 522	Habitable	30.1%	28.4%	1.7%	0.94
Window 523	Habitable	31.3%	30.0%	1.3%	0.96
Window 524	Habitable	32.6%	31.7%	0.9%	0.97

**Appendix 2.2 - Sunlight to Windows**  
**Regents Park Estate, London NW1 4BX**

Reference	Use Class	Sunlight to Windows							
		Total Sunlight Hours				Winter Sunlight Hours			
		Before	After	Loss	Ratio	Before	After	Loss	Ratio
<u>Rydal Water</u>									
Window 1	Non Habitable	2%	2%	0%	1.0	1%	1%	0%	1.0
Window 2	Habitable	15%	12%	3%	0.8	1%	1%	0%	1.0
Window 3	Habitable	57%	57%	0%	1.0	3%	3%	0%	1.0
Window 4	Habitable	36%	33%	3%	0.92	4%	4%	0%	1.0
Window 5	Habitable	4%	0%	4%	0.03	0%	0%	0%	1.0
Window 6	Habitable	41%	37%	4%	0.9	7%	7%	0%	1.0
Window 7	Habitable	4%	0%	4%	0.03	0%	0%	0%	1.0
Window 8	Habitable	72%	72%	0%	1.0	16%	16%	0%	1.0
Window 9	Habitable	44%	40%	4%	0.91	10%	10%	0%	1.0
Window 10	Habitable	4%	0%	4%	0.03	0%	0%	0%	1.0
Window 11	Habitable	48%	43%	5%	0.9	13%	13%	0%	1.0
Window 12	Habitable	4%	0%	4%	0.03	0%	0%	0%	1.0
Window 13	Habitable	84%	84%	0%	1.0	28%	28%	0%	1.0
Window 14	Habitable	49%	44%	5%	0.9	14%	14%	0%	1.0
Window 15	Habitable	4%	0%	4%	0.03	0%	0%	0%	1.0
Window 16	Habitable	49%	46%	3%	0.94	14%	14%	0%	1.0
Window 17	Habitable	5%	1%	4%	0.2	0%	0%	0%	1.0
Window 18	Habitable	86%	86%	0%	1.0	30%	30%	0%	1.0
Window 19	Habitable	49%	48%	1%	0.98	14%	14%	0%	1.0
Window 20	Habitable	5%	4%	1%	0.8	0%	0%	0%	1.0
Window 21	Habitable	49%	49%	0%	1.0	14%	14%	0%	1.0
Window 22	Habitable	5%	5%	0%	1.0	0%	0%	0%	1.0
Window 23	Habitable	86%	86%	0%	1.0	30%	30%	0%	1.0
Window 24	Habitable	49%	49%	0%	1.0	14%	14%	0%	1.0
Window 25	Habitable	5%	5%	0%	1.0	0%	0%	0%	1.0
Window 26	Habitable	15%	12%	3%	0.8	2%	2%	0%	1.0
Window 27	Habitable	14%	10%	4%	0.71	0%	0%	0%	1.0
Window 28	Habitable	16%	12%	4%	0.75	1%	1%	0%	1.0
Window 29	Habitable	46%	42%	4%	0.91	12%	12%	0%	1.0
Window 30	Habitable	16%	12%	4%	0.75	1%	1%	0%	1.0
Window 31	Habitable	16%	12%	4%	0.75	1%	1%	0%	1.0
Window 32	Habitable	18%	13%	5%	0.72	2%	2%	0%	1.0
Window 33	Habitable	19%	16%	3%	0.84	3%	3%	0%	1.0

**Appendix 2.2 - Sunlight to Windows**  
**Regents Park Estate, London NW1 4BX**

Reference	Use Class	Sunlight to Windows							
		Total Sunlight Hours				Winter Sunlight Hours			
		Before	After	Loss	Ratio	Before	After	Loss	Ratio
Window 34	Habitable	19%	18%	1%	0.95	3%	3%	0%	1.0
Window 35	Habitable	19%	19%	0%	1.0	3%	3%	0%	1.0
Window 36	Habitable	19%	19%	0%	1.0	3%	3%	0%	1.0
Window 37	Non Habitable	29%	23%	6%	0.79	3%	3%	0%	1.0
Window 38	Habitable	15%	9%	6%	0.6	3%	3%	0%	1.0
Window 39	Non Habitable	36%	28%	8%	0.78	6%	6%	0%	1.0
Window 40	Habitable	21%	21%	0%	1.0	3%	3%	0%	1.0
Window 41	Habitable	41%	32%	9%	0.78	7%	7%	0%	1.0
Window 42	Habitable	23%	23%	0%	1.0	5%	5%	0%	1.0
Window 43	Habitable	43%	34%	9%	0.79	9%	9%	0%	1.0
Window 44	Habitable	24%	24%	0%	1.0	6%	6%	0%	1.0
Window 45	Habitable	45%	36%	9%	0.8	11%	11%	0%	1.0
Window 46	Habitable	24%	24%	0%	1.0	6%	6%	0%	1.0
Window 47	Habitable	48%	39%	9%	0.81	13%	13%	0%	1.0
Window 48	Habitable	25%	25%	0%	1.0	7%	7%	0%	1.0
Window 49	Habitable	49%	43%	6%	0.88	14%	14%	0%	1.0
Window 50	Habitable	25%	25%	0%	1.0	7%	7%	0%	1.0
Window 51	Habitable	49%	47%	2%	0.96	14%	14%	0%	1.0
Window 52	Habitable	25%	25%	0%	1.0	7%	7%	0%	1.0
Window 53	Habitable	49%	48%	1%	0.98	14%	14%	0%	1.0
Window 54	Habitable	25%	25%	0%	1.0	7%	7%	0%	1.0
Window 55	Habitable	49%	49%	0%	1.0	14%	14%	0%	1.0
Window 56	Habitable	25%	25%	0%	1.0	7%	7%	0%	1.0
Window 57	Habitable	49%	49%	0%	1.0	14%	14%	0%	1.0
Window 58	Non Habitable	42%	30%	12%	0.71	8%	8%	0%	1.0
Window 59	Non Habitable	44%	32%	12%	0.73	10%	10%	0%	1.0
Window 60	Non Habitable	46%	36%	10%	0.78	12%	12%	0%	1.0
Window 61	Non Habitable	48%	39%	9%	0.81	13%	13%	0%	1.0
Window 62	Non Habitable	49%	42%	7%	0.86	14%	14%	0%	1.0
Window 63	Non Habitable	49%	48%	1%	0.98	14%	14%	0%	1.0
Window 64	Non Habitable	49%	49%	0%	1.0	14%	14%	0%	1.0
Window 65	Non Habitable	49%	49%	0%	1.0	14%	14%	0%	1.0
Window 66	Non Habitable	6%	0%	6%	0.02	0%	0%	0%	1.0

**Appendix 2.2 - Sunlight to Windows**  
**Regents Park Estate, London NW1 4BX**

Reference	Use Class	Sunlight to Windows							
		Total Sunlight Hours				Winter Sunlight Hours			
		Before	After	Loss	Ratio	Before	After	Loss	Ratio
Window 67	Non Habitable	17%	6%	11%	0.35	2%	2%	0%	1.0
Window 68	Non Habitable	1%	0%	1%	0.1	0%	0%	0%	1.0
Window 69	Non Habitable	21%	11%	10%	0.52	4%	4%	0%	1.0
Window 70	Habitable	41%	27%	14%	0.66	8%	8%	0%	1.0
Window 71	Habitable	1%	0%	1%	0.1	0%	0%	0%	1.0
Window 72	Habitable	44%	29%	15%	0.66	10%	9%	1%	0.9
Window 73	Habitable	4%	0%	4%	0.03	0%	0%	0%	1.0
Window 74	Habitable	46%	32%	14%	0.7	12%	11%	1%	0.92
Window 75	Habitable	4%	0%	4%	0.03	0%	0%	0%	1.0
Window 76	Habitable	46%	35%	11%	0.76	12%	11%	1%	0.92
Window 77	Habitable	5%	0%	5%	0.02	0%	0%	0%	1.0
Window 78	Habitable	48%	39%	9%	0.81	13%	11%	2%	0.85
Window 79	Habitable	5%	0%	5%	0.02	0%	0%	0%	1.0
Window 80	Habitable	49%	45%	4%	0.92	14%	12%	2%	0.86
Window 81	Habitable	5%	1%	4%	0.2	0%	0%	0%	1.0
Window 82	Habitable	49%	48%	1%	0.98	14%	14%	0%	1.0
Window 83	Habitable	5%	4%	1%	0.8	0%	0%	0%	1.0
Window 84	Habitable	49%	49%	0%	1.0	14%	14%	0%	1.0
Window 85	Habitable	5%	5%	0%	1.0	0%	0%	0%	1.0
Window 86	Habitable	49%	49%	0%	1.0	14%	14%	0%	1.0
Window 87	Habitable	5%	5%	0%	1.0	0%	0%	0%	1.0
Window 88	Non Habitable	26%	17%	9%	0.65	5%	5%	0%	1.0
Window 89	Habitable	12%	4%	8%	0.33	3%	3%	0%	1.0
Window 90	Habitable	42%	24%	18%	0.57	9%	8%	1%	0.89
Window 91	Habitable	14%	0%	14%	0.01	0%	0%	0%	1.0
Window 92	Habitable	45%	27%	18%	0.6	10%	9%	1%	0.9
Window 93	Habitable	18%	1%	17%	0.06	2%	1%	1%	0.5
Window 94	Habitable	18%	2%	16%	0.11	2%	1%	1%	0.5
Window 95	Habitable	18%	7%	11%	0.39	2%	1%	1%	0.5
Window 96	Habitable	19%	10%	9%	0.53	3%	1%	2%	0.33
Window 97	Habitable	19%	15%	4%	0.79	3%	1%	2%	0.33
Window 98	Habitable	19%	18%	1%	0.95	3%	3%	0%	1.0
Window 99	Habitable	19%	19%	0%	1.0	3%	3%	0%	1.0



**Appendix 2.2 - Sunlight to Windows**  
**Regents Park Estate, London NW1 4BX**

Reference	Use Class	Sunlight to Windows							
		Total Sunlight Hours				Winter Sunlight Hours			
		Before	After	Loss	Ratio	Before	After	Loss	Ratio
Window 100	Habitable	19%	19%	0%	1.0	3%	3%	0%	1.0
Window 101	Habitable	22%	9%	13%	0.41	5%	4%	1%	0.8
Window 102	Habitable	42%	23%	19%	0.55	9%	8%	1%	0.89
Window 103	Habitable	23%	11%	12%	0.48	5%	4%	1%	0.8
Window 104	Habitable	47%	28%	19%	0.6	12%	10%	2%	0.83
Window 105	Habitable	23%	12%	11%	0.52	5%	4%	1%	0.8
Window 106	Habitable	48%	30%	18%	0.63	13%	11%	2%	0.85
Window 107	Habitable	23%	17%	6%	0.74	5%	4%	1%	0.8
Window 108	Habitable	48%	35%	13%	0.73	13%	11%	2%	0.85
Window 109	Habitable	24%	19%	5%	0.79	6%	4%	2%	0.67
Window 110	Habitable	48%	39%	9%	0.81	13%	11%	2%	0.85
Window 111	Habitable	25%	22%	3%	0.88	7%	5%	2%	0.71
Window 112	Habitable	49%	44%	5%	0.9	14%	11%	3%	0.79
Window 113	Habitable	25%	25%	0%	1.0	7%	7%	0%	1.0
Window 114	Habitable	49%	47%	2%	0.96	14%	13%	1%	0.93
Window 115	Habitable	25%	25%	0%	1.0	7%	7%	0%	1.0
Window 116	Habitable	49%	49%	0%	1.0	14%	14%	0%	1.0
Window 117	Habitable	26%	26%	0%	1.0	7%	7%	0%	1.0
Window 118	Habitable	49%	49%	0%	1.0	14%	14%	0%	1.0
Window 119	Non Habitable	25%	15%	10%	0.6	6%	5%	1%	0.83
Window 120	Habitable	12%	3%	9%	0.25	3%	3%	0%	1.0
Window 121	Non Habitable	23%	12%	11%	0.52	5%	4%	1%	0.8
Window 122	Habitable	12%	2%	10%	0.17	3%	2%	1%	0.67
Window 123	Habitable	43%	23%	20%	0.53	10%	8%	2%	0.8
Window 124	Habitable	1%	0%	1%	0.1	0%	0%	0%	1.0
Window 125	Habitable	48%	28%	20%	0.58	13%	10%	3%	0.77
Window 126	Habitable	5%	0%	5%	0.02	0%	0%	0%	1.0
Window 127	Habitable	48%	29%	19%	0.6	13%	10%	3%	0.77
Window 128	Habitable	5%	0%	5%	0.02	0%	0%	0%	1.0
Window 129	Habitable	48%	35%	13%	0.73	13%	11%	2%	0.85
Window 130	Habitable	5%	0%	5%	0.02	0%	0%	0%	1.0
Window 131	Habitable	48%	39%	9%	0.81	13%	11%	2%	0.85
Window 132	Habitable	5%	0%	5%	0.02	0%	0%	0%	1.0

**Appendix 2.2 - Sunlight to Windows**  
**Regents Park Estate, London NW1 4BX**

Reference	Use Class	Sunlight to Windows							
		Total Sunlight Hours				Winter Sunlight Hours			
		Before	After	Loss	Ratio	Before	After	Loss	Ratio
Window 133	Habitable	49%	44%	5%	0.9	14%	11%	3%	0.79
Window 134	Habitable	5%	2%	3%	0.4	0%	0%	0%	1.0
Window 135	Habitable	49%	47%	2%	0.96	14%	13%	1%	0.93
Window 136	Habitable	5%	5%	0%	1.0	0%	0%	0%	1.0
Window 137	Habitable	49%	49%	0%	1.0	14%	14%	0%	1.0
Window 138	Habitable	5%	5%	0%	1.0	0%	0%	0%	1.0
Window 139	Habitable	49%	49%	0%	1.0	14%	14%	0%	1.0
Window 140	Habitable	5%	5%	0%	1.0	0%	0%	0%	1.0
Window 141	Non Habitable	23%	13%	10%	0.57	5%	5%	0%	1.0
Window 142	Habitable	12%	2%	10%	0.17	3%	2%	1%	0.67
Window 143	Habitable	14%	1%	13%	0.07	0%	0%	0%	1.0
Window 144	Habitable	19%	2%	17%	0.11	3%	1%	2%	0.33
Window 145	Habitable	19%	4%	15%	0.21	3%	1%	2%	0.33
Window 146	Habitable	19%	8%	11%	0.42	3%	1%	2%	0.33
Window 147	Habitable	19%	11%	8%	0.58	3%	1%	2%	0.33
Window 148	Habitable	19%	16%	3%	0.84	3%	1%	2%	0.33
Window 149	Habitable	19%	19%	0%	1.0	3%	3%	0%	1.0
Window 150	Habitable	19%	19%	0%	1.0	3%	3%	0%	1.0
Window 151	Habitable	49%	49%	0%	1.0	14%	14%	0%	1.0
Window 152	Habitable	19%	19%	0%	1.0	3%	3%	0%	1.0
Window 153	Non Habitable	20%	4%	16%	0.2	3%	1%	2%	0.33
Window 154	Non Habitable	16%	2%	14%	0.13	3%	1%	2%	0.33
Window 155	Non Habitable	1%	1%	0%	1.0	0%	0%	0%	1.0
Window 156	Non Habitable	19%	3%	16%	0.16	3%	1%	2%	0.33
Window 157	Non Habitable	35%	18%	17%	0.51	8%	6%	2%	0.75
Window 158	Habitable	21%	5%	16%	0.24	4%	2%	2%	0.5
Window 159	Habitable	44%	22%	22%	0.5	10%	7%	3%	0.7
Window 160	Habitable	24%	9%	15%	0.38	6%	2%	4%	0.33
Window 161	Habitable	47%	28%	19%	0.6	13%	9%	4%	0.69
Window 162	Habitable	24%	10%	14%	0.42	6%	2%	4%	0.33
Window 163	Habitable	48%	29%	19%	0.6	13%	9%	4%	0.69
Window 164	Habitable	24%	16%	8%	0.67	6%	3%	3%	0.5
Window 165	Habitable	48%	36%	12%	0.75	13%	10%	3%	0.77

**Appendix 2.2 - Sunlight to Windows**  
**Regents Park Estate, London NW1 4BX**

Reference	Use Class	Sunlight to Windows							
		Total Sunlight Hours				Winter Sunlight Hours			
		Before	After	Loss	Ratio	Before	After	Loss	Ratio
Window 166	Habitable	24%	20%	4%	0.83	6%	4%	2%	0.67
Window 167	Habitable	48%	40%	8%	0.83	13%	11%	2%	0.85
Window 168	Habitable	25%	21%	4%	0.84	7%	4%	3%	0.57
Window 169	Habitable	49%	45%	4%	0.92	14%	11%	3%	0.79
Window 170	Habitable	25%	24%	1%	0.96	7%	6%	1%	0.86
Window 171	Habitable	49%	48%	1%	0.98	14%	13%	1%	0.93
Window 172	Habitable	25%	25%	0%	1.0	7%	7%	0%	1.0
Window 173	Habitable	49%	49%	0%	1.0	14%	14%	0%	1.0
Window 174	Habitable	25%	25%	0%	1.0	7%	7%	0%	1.0
Window 175	Habitable	49%	49%	0%	1.0	14%	14%	0%	1.0
Window 176	Non Habitable	46%	24%	22%	0.52	12%	8%	4%	0.67
Window 177	Non Habitable	47%	26%	21%	0.55	13%	8%	5%	0.62
Window 178	Non Habitable	47%	30%	17%	0.64	13%	8%	5%	0.62
Window 179	Non Habitable	47%	37%	10%	0.79	13%	10%	3%	0.77
Window 180	Non Habitable	48%	41%	7%	0.85	14%	11%	3%	0.79
Window 181	Non Habitable	49%	47%	2%	0.96	14%	12%	2%	0.86
Window 182	Non Habitable	49%	49%	0%	1.0	14%	14%	0%	1.0
Window 183	Non Habitable	49%	49%	0%	1.0	14%	14%	0%	1.0
Window 184	Non Habitable	16%	4%	12%	0.25	1%	0%	1%	0.01
Window 185	Habitable	13%	2%	11%	0.15	2%	0%	2%	0.01
Window 186	Habitable	45%	24%	21%	0.53	12%	8%	4%	0.67
Window 187	Habitable	3%	3%	0%	1.0	0%	0%	0%	1.0
Window 188	Habitable	47%	29%	18%	0.62	13%	8%	5%	0.62
Window 189	Habitable	3%	3%	0%	1.0	0%	0%	0%	1.0
Window 190	Habitable	47%	30%	17%	0.64	13%	8%	5%	0.62
Window 191	Habitable	4%	4%	0%	1.0	0%	0%	0%	1.0
Window 192	Habitable	47%	37%	10%	0.79	13%	9%	4%	0.69
Window 193	Habitable	4%	4%	0%	1.0	0%	0%	0%	1.0
Window 194	Habitable	47%	42%	5%	0.89	13%	11%	2%	0.85
Window 195	Habitable	4%	4%	0%	1.0	0%	0%	0%	1.0
Window 196	Habitable	48%	45%	3%	0.94	14%	11%	3%	0.79
Window 197	Habitable	4%	4%	0%	1.0	0%	0%	0%	1.0
Window 198	Habitable	49%	48%	1%	0.98	14%	13%	1%	0.93

**Appendix 2.2 - Sunlight to Windows**  
**Regents Park Estate, London NW1 4BX**

Reference	Use Class	Sunlight to Windows							
		Total Sunlight Hours				Winter Sunlight Hours			
		Before	After	Loss	Ratio	Before	After	Loss	Ratio
Window 199	Habitable	5%	5%	0%	1.0	0%	0%	0%	1.0
Window 200	Habitable	49%	49%	0%	1.0	14%	14%	0%	1.0
Window 201	Habitable	5%	5%	0%	1.0	0%	0%	0%	1.0
Window 202	Habitable	49%	49%	0%	1.0	14%	14%	0%	1.0
Window 203	Habitable	5%	5%	0%	1.0	0%	0%	0%	1.0
Window 204	Non Habitable	26%	10%	16%	0.38	4%	3%	1%	0.75
Window 205	Habitable	14%	2%	12%	0.14	4%	1%	3%	0.25
Window 206	Habitable	44%	24%	20%	0.55	12%	8%	4%	0.67
Window 207	Habitable	11%	0%	11%	0.01	0%	0%	0%	1.0
Window 208	Habitable	15%	2%	13%	0.13	3%	1%	2%	0.33
Window 209	Habitable	16%	5%	11%	0.31	3%	1%	2%	0.33
Window 210	Habitable	16%	10%	6%	0.63	3%	1%	2%	0.33
Window 211	Habitable	17%	13%	4%	0.76	2%	0%	2%	0.01
Window 212	Habitable	17%	15%	2%	0.88	2%	0%	2%	0.01
Window 213	Habitable	19%	19%	0%	1.0	3%	3%	0%	1.0
Window 214	Habitable	19%	19%	0%	1.0	3%	3%	0%	1.0
Window 215	Habitable	19%	19%	0%	1.0	3%	3%	0%	1.0
Window 216	Non Habitable	26%	12%	14%	0.46	4%	4%	0%	1.0
Window 217	Habitable	15%	3%	12%	0.2	4%	1%	3%	0.25
Window 218	Habitable	22%	4%	18%	0.18	4%	1%	3%	0.25
Window 219	Habitable	42%	25%	17%	0.6	12%	8%	4%	0.67
Window 220	Habitable	7%	7%	0%	1.0	0%	0%	0%	1.0
Window 221	Habitable	23%	8%	15%	0.35	5%	1%	4%	0.2
Window 222	Habitable	42%	30%	12%	0.71	12%	8%	4%	0.67
Window 223	Habitable	24%	9%	15%	0.38	6%	1%	5%	0.17
Window 224	Habitable	42%	31%	11%	0.74	12%	8%	4%	0.67
Window 225	Habitable	7%	7%	0%	1.0	0%	0%	0%	1.0
Window 226	Habitable	25%	17%	8%	0.68	7%	2%	5%	0.29
Window 227	Habitable	44%	37%	7%	0.84	14%	9%	5%	0.64
Window 228	Habitable	25%	20%	5%	0.8	7%	4%	3%	0.57
Window 229	Habitable	44%	40%	4%	0.91	14%	11%	3%	0.79
Window 230	Habitable	7%	7%	0%	1.0	0%	0%	0%	1.0
Window 231	Habitable	25%	22%	3%	0.88	7%	4%	3%	0.57

**Appendix 2.2 - Sunlight to Windows**  
**Regents Park Estate, London NW1 4BX**

Reference	Use Class	Sunlight to Windows							
		Total Sunlight Hours				Winter Sunlight Hours			
		Before	After	Loss	Ratio	Before	After	Loss	Ratio
Window 232	Habitable	48%	45%	3%	0.94	14%	11%	3%	0.79
Window 233	Habitable	25%	24%	1%	0.96	7%	6%	1%	0.86
Window 234	Habitable	49%	48%	1%	0.98	14%	13%	1%	0.93
Window 235	Habitable	12%	12%	0%	1.0	0%	0%	0%	1.0
Window 236	Habitable	25%	25%	0%	1.0	7%	7%	0%	1.0
Window 237	Habitable	49%	49%	0%	1.0	14%	14%	0%	1.0
Window 238	Habitable	25%	25%	0%	1.0	7%	7%	0%	1.0
Window 239	Habitable	49%	49%	0%	1.0	14%	14%	0%	1.0
Window 240	Habitable	12%	12%	0%	1.0	0%	0%	0%	1.0
Window 241	Habitable	49%	49%	0%	1.0	14%	14%	0%	1.0
Window 242	Habitable	49%	49%	0%	1.0	14%	14%	0%	1.0
Window 243	Habitable	49%	49%	0%	1.0	14%	14%	0%	1.0
Window 244	Habitable	45%	45%	0%	1.0	10%	10%	0%	1.0
Window 245	Habitable	0%	0%	0%	1.0	0%	0%	0%	1.0
Window 246	Habitable	49%	49%	0%	1.0	14%	14%	0%	1.0
Window 247	Habitable	49%	49%	0%	1.0	14%	14%	0%	1.0
Window 248	Habitable	49%	49%	0%	1.0	14%	14%	0%	1.0
Window 249	Habitable	49%	49%	0%	1.0	14%	14%	0%	1.0
Window 250	Habitable	38%	38%	0%	1.0	6%	6%	0%	1.0
Window 251	Habitable	47%	47%	0%	1.0	13%	13%	0%	1.0
<u>The Tarns</u>									
Window 252	Habitable	39%	21%	18%	0.54	2%	5%	-3%	2.5
Window 253	Habitable	50%	27%	23%	0.54	11%	7%	4%	0.64
Window 254	Habitable	58%	30%	28%	0.52	18%	8%	10%	0.44
Window 255	Habitable	60%	33%	27%	0.55	19%	8%	11%	0.42
Window 256	Habitable	65%	41%	24%	0.63	21%	9%	12%	0.43
Window 257	Habitable	66%	51%	15%	0.77	22%	11%	11%	0.5
Window 258	Habitable	70%	62%	8%	0.89	22%	14%	8%	0.64
Window 259	Non Habitable	7%	5%	2%	0.71	2%	0%	2%	0.01
Window 260	Habitable	39%	16%	23%	0.41	8%	0%	8%	0.0
Window 261	Habitable	24%	17%	7%	0.71	8%	1%	7%	0.13
Window 262	Habitable	46%	20%	26%	0.43	12%	1%	11%	0.08
Window 263	Habitable	25%	18%	7%	0.72	8%	1%	7%	0.13

**Appendix 2.2 - Sunlight to Windows**  
**Regents Park Estate, London NW1 4BX**

Reference	Use Class	Sunlight to Windows							
		Total Sunlight Hours				Winter Sunlight Hours			
		Before	After	Loss	Ratio	Before	After	Loss	Ratio
Window 264	Habitable	48%	29%	19%	0.6	13%	2%	11%	0.15
Window 265	Habitable	27%	20%	7%	0.74	10%	3%	7%	0.3
Window 266	Habitable	49%	40%	9%	0.82	14%	5%	9%	0.36
Window 267	Non Habitable	32%	17%	15%	0.53	5%	1%	4%	0.2
Window 268	Habitable	37%	20%	17%	0.54	11%	1%	10%	0.09
Window 269	Habitable	39%	26%	13%	0.67	6%	2%	4%	0.33
Window 270	Habitable	41%	26%	15%	0.63	12%	2%	10%	0.17
Window 271	Habitable	40%	31%	9%	0.78	7%	3%	4%	0.43
Window 272	Habitable	43%	31%	12%	0.72	13%	3%	10%	0.23
Window 273	Habitable	42%	39%	3%	0.93	8%	5%	3%	0.63
Window 274	Habitable	48%	44%	4%	0.92	14%	10%	4%	0.71
Window 275	Non Habitable	38%	22%	16%	0.58	11%	2%	9%	0.18
Window 276	Habitable	21%	14%	7%	0.67	9%	2%	7%	0.22
Window 277	Habitable	41%	28%	13%	0.68	11%	3%	8%	0.27
Window 278	Habitable	25%	18%	7%	0.72	10%	3%	7%	0.3
Window 279	Habitable	46%	36%	10%	0.78	12%	4%	8%	0.33
Window 280	Habitable	29%	22%	7%	0.76	12%	5%	7%	0.42
Window 281	Habitable	48%	44%	4%	0.92	13%	9%	4%	0.69
Window 282	Habitable	49%	46%	3%	0.94	14%	11%	3%	0.79
<u>112 Hampstead Street</u>									
Window 283	Non Habitable	1%	1%	0%	1.0	0%	0%	0%	1.0
Window 284	Non Habitable	1%	1%	0%	1.0	0%	0%	0%	1.0
Window 285	Non Habitable	1%	1%	0%	1.0	0%	0%	0%	1.0
Window 286	Non Habitable	1%	1%	0%	1.0	0%	0%	0%	1.0
Window 287	Non Habitable	36%	28%	8%	0.78	11%	8%	3%	0.73
Window 288	Non Habitable	36%	27%	9%	0.75	11%	8%	3%	0.73
Window 289	Non Habitable	36%	26%	10%	0.72	11%	8%	3%	0.73
Window 290	Non Habitable	1%	1%	0%	1.0	0%	0%	0%	1.0
Window 291	Non Habitable	1%	1%	0%	1.0	0%	0%	0%	1.0
Window 292	Non Habitable	1%	1%	0%	1.0	0%	0%	0%	1.0
Window 293	Non Habitable	40%	33%	7%	0.83	12%	8%	4%	0.67
Window 294	Non Habitable	40%	33%	7%	0.83	12%	8%	4%	0.67
Window 295	Non Habitable	4%	4%	0%	1.0	0%	0%	0%	1.0

**Appendix 2.2 - Sunlight to Windows**  
**Regents Park Estate, London NW1 4BX**

Reference	Use Class	Sunlight to Windows							
		Total Sunlight Hours				Winter Sunlight Hours			
		Before	After	Loss	Ratio	Before	After	Loss	Ratio
Window 296	Non Habitable	5%	5%	0%	1.0	0%	0%	0%	1.0
Window 297	Non Habitable	5%	5%	0%	1.0	0%	0%	0%	1.0
Window 298	Non Habitable	42%	38%	4%	0.9	12%	8%	4%	0.67
Window 299	Non Habitable	42%	37%	5%	0.88	12%	8%	4%	0.67
Window 300	Non Habitable	7%	7%	0%	1.0	0%	0%	0%	1.0
Window 301	Non Habitable	7%	7%	0%	1.0	0%	0%	0%	1.0
Window 302	Non Habitable	7%	7%	0%	1.0	0%	0%	0%	1.0
Window 303	Non Habitable	44%	42%	2%	0.95	12%	10%	2%	0.83
Window 304	Non Habitable	45%	42%	3%	0.93	12%	10%	2%	0.83
Window 305	Non Habitable	66%	65%	1%	0.98	19%	18%	1%	0.95
Window 306	Non Habitable	62%	60%	2%	0.97	15%	13%	2%	0.87
Window 307	Non Habitable	39%	39%	0%	1.0	11%	11%	0%	1.0
Window 308	Non Habitable	38%	38%	0%	1.0	11%	11%	0%	1.0
Window 309	Non Habitable	9%	9%	0%	1.0	0%	0%	0%	1.0
Window 310	Non Habitable	10%	10%	0%	1.0	0%	0%	0%	1.0
Window 311	Non Habitable	37%	37%	0%	1.0	10%	10%	0%	1.0
Window 312	Non Habitable	38%	38%	0%	1.0	10%	10%	0%	1.0
Window 313	Non Habitable	39%	31%	8%	0.79	11%	8%	3%	0.73
Window 314	Non Habitable	43%	36%	7%	0.84	13%	8%	5%	0.62
Window 315	Non Habitable	45%	41%	4%	0.91	13%	10%	3%	0.77
Window 316	Non Habitable	37%	26%	11%	0.7	11%	8%	3%	0.73
Window 317	Non Habitable	36%	26%	10%	0.72	11%	8%	3%	0.73
Window 318	Non Habitable	37%	26%	11%	0.7	11%	8%	3%	0.73
Window 319	Non Habitable	40%	32%	8%	0.8	11%	8%	3%	0.73
Window 320	Non Habitable	40%	32%	8%	0.8	11%	8%	3%	0.73
Window 321	Non Habitable	44%	37%	7%	0.84	13%	9%	4%	0.69
Window 322	Non Habitable	44%	37%	7%	0.84	13%	9%	4%	0.69
Window 323	Non Habitable	64%	58%	6%	0.91	19%	16%	3%	0.84
Window 324	Non Habitable	55%	51%	4%	0.93	16%	14%	2%	0.88
Window 325	Non Habitable	45%	42%	3%	0.93	13%	11%	2%	0.85
Window 326	Non Habitable	46%	43%	3%	0.93	13%	11%	2%	0.85
Window 327	Non Habitable	82%	80%	2%	0.98	26%	25%	1%	0.96
Window 328	Non Habitable	78%	76%	2%	0.97	25%	24%	1%	0.96

**Appendix 2.2 - Sunlight to Windows**  
**Regents Park Estate, London NW1 4BX**

Reference	Use Class	Sunlight to Windows							
		Total Sunlight Hours				Winter Sunlight Hours			
		Before	After	Loss	Ratio	Before	After	Loss	Ratio
Window 329	Non Habitable	72%	71%	1%	0.99	28%	27%	1%	0.96
Window 330	Non Habitable	73%	71%	2%	0.97	29%	27%	2%	0.93
Window 331	Non Habitable	43%	43%	0%	1.0	13%	13%	0%	1.0
Window 332	Non Habitable	42%	42%	0%	1.0	12%	12%	0%	1.0
Window 333	Non Habitable	9%	9%	0%	1.0	0%	0%	0%	1.0
Window 334	Non Habitable	9%	9%	0%	1.0	0%	0%	0%	1.0
Window 335	Non Habitable	37%	36%	1%	0.97	11%	10%	1%	0.91
Window 336	Non Habitable	37%	36%	1%	0.97	11%	10%	1%	0.91
Window 337	Non Habitable	38%	36%	2%	0.95	13%	12%	1%	0.92
Window 338	Non Habitable	37%	36%	1%	0.97	13%	12%	1%	0.92
Window 339	Non Habitable	37%	27%	10%	0.73	11%	9%	2%	0.82
Window 340	Non Habitable	37%	26%	11%	0.7	11%	9%	2%	0.82
Window 341	Non Habitable	36%	26%	10%	0.72	11%	9%	2%	0.82
Window 342	Non Habitable	39%	29%	10%	0.74	11%	8%	3%	0.73
Window 343	Non Habitable	40%	31%	9%	0.78	11%	9%	2%	0.82
Window 344	Non Habitable	39%	31%	8%	0.79	11%	10%	1%	0.91
Window 345	Non Habitable	40%	31%	9%	0.78	11%	10%	1%	0.91
Window 346	Non Habitable	36%	27%	9%	0.75	10%	10%	0%	1.0
Window 347	Non Habitable	35%	27%	8%	0.77	10%	10%	0%	1.0
Window 348	Non Habitable	35%	28%	7%	0.8	10%	10%	0%	1.0
Window 349	Non Habitable	40%	32%	8%	0.8	11%	11%	0%	1.0
Window 350	Non Habitable	39%	33%	6%	0.85	11%	11%	0%	1.0
Window 351	Non Habitable	40%	33%	7%	0.83	12%	11%	1%	0.92
Window 352	Non Habitable	42%	33%	9%	0.79	12%	11%	1%	0.92
Window 353	Non Habitable	43%	36%	7%	0.84	13%	13%	0%	1.0
Window 354	Non Habitable	42%	38%	4%	0.9	13%	13%	0%	1.0
Window 355	Non Habitable	55%	52%	3%	0.95	14%	14%	0%	1.0
Window 356	Non Habitable	45%	45%	0%	1.0	13%	13%	0%	1.0
Window 357	Non Habitable	11%	8%	3%	0.73	3%	3%	0%	1.0
Window 358	Non Habitable	5%	3%	2%	0.6	1%	1%	0%	1.0
Window 359	Non Habitable	0%	0%	0%	1.0	0%	0%	0%	1.0
Window 360	Habitable	33%	33%	0%	1.0	9%	9%	0%	1.0
Window 361	Habitable	42%	41%	1%	0.98	12%	12%	0%	1.0



**Appendix 2.2 - Sunlight to Windows**  
**Regents Park Estate, London NW1 4BX**

Reference	Use Class	Sunlight to Windows							
		Total Sunlight Hours				Winter Sunlight Hours			
		Before	After	Loss	Ratio	Before	After	Loss	Ratio
Window 362	Habitable	41%	41%	0%	1.0	12%	12%	0%	1.0
Window 363	Habitable	34%	33%	1%	0.97	9%	9%	0%	1.0
Window 364	Habitable	43%	42%	1%	0.98	12%	12%	0%	1.0
Window 365	Habitable	45%	44%	1%	0.98	12%	12%	0%	1.0
Window 366	Habitable	34%	32%	2%	0.94	9%	9%	0%	1.0
Window 367	Habitable	43%	40%	3%	0.93	12%	12%	0%	1.0
Window 368	Habitable	45%	44%	1%	0.98	12%	12%	0%	1.0
Window 369	Habitable	27%	25%	2%	0.93	5%	5%	0%	1.0
Window 370	Habitable	39%	35%	4%	0.9	11%	9%	2%	0.82
Window 371	Habitable	44%	42%	2%	0.95	11%	11%	0%	1.0
Window 372	Habitable	7%	7%	0%	1.0	0%	0%	0%	1.0
Window 373	Habitable	23%	21%	2%	0.91	3%	3%	0%	1.0
Window 374	Habitable	47%	43%	4%	0.91	14%	12%	2%	0.86
Window 375	Habitable	43%	39%	4%	0.91	11%	9%	2%	0.82
Window 376	Habitable	30%	28%	2%	0.93	7%	7%	0%	1.0
Window 377	Habitable	45%	43%	2%	0.96	14%	14%	0%	1.0
Window 378	Habitable	43%	42%	1%	0.98	13%	13%	0%	1.0
Window 379	Habitable	64%	64%	0%	1.0	19%	19%	0%	1.0
Window 380	Habitable	76%	76%	0%	1.0	22%	22%	0%	1.0
Window 381	Habitable	76%	76%	0%	1.0	20%	20%	0%	1.0
Window 382	Habitable	46%	44%	2%	0.96	15%	15%	0%	1.0
Window 383	Habitable	45%	44%	1%	0.98	14%	14%	0%	1.0
Window 384	Habitable	69%	69%	0%	1.0	24%	24%	0%	1.0
Window 385	Habitable	80%	80%	0%	1.0	26%	26%	0%	1.0
Window 386	Habitable	82%	82%	0%	1.0	26%	26%	0%	1.0
Window 387	Habitable	38%	36%	2%	0.95	12%	12%	0%	1.0
Window 388	Habitable	38%	38%	0%	1.0	25%	25%	0%	1.0
Window 389	Habitable	38%	38%	0%	1.0	27%	27%	0%	1.0
Window 390	Habitable	0%	0%	0%	1.0	0%	0%	0%	1.0
Window 391	Habitable	6%	5%	1%	0.83	0%	0%	0%	1.0
Window 392	Habitable	6%	5%	1%	0.83	0%	0%	0%	1.0
Window 393	Habitable	41%	40%	1%	0.98	12%	12%	0%	1.0
Window 394	Habitable	35%	35%	0%	1.0	5%	5%	0%	1.0

**Appendix 2.2 - Sunlight to Windows**  
**Regents Park Estate, London NW1 4BX**

Reference	Use Class	Sunlight to Windows							
		Total Sunlight Hours				Winter Sunlight Hours			
		Before	After	Loss	Ratio	Before	After	Loss	Ratio
Window 395	Habitable	41%	41%	0%	1.0	12%	12%	0%	1.0
Window 396	Habitable	28%	28%	0%	1.0	0%	0%	0%	1.0
Window 397	Habitable	39%	39%	0%	1.0	12%	12%	0%	1.0
Window 398	Habitable	19%	19%	0%	1.0	0%	0%	0%	1.0
<u>110 Hampstead Street</u>									
Window 399	Habitable	4%	4%	0%	1.0	0%	0%	0%	1.0
Window 400	Habitable	7%	7%	0%	1.0	0%	0%	0%	1.0
Window 401	Habitable	8%	8%	0%	1.0	0%	0%	0%	1.0
Window 402	Habitable	10%	10%	0%	1.0	0%	0%	0%	1.0
Window 403	Habitable	10%	10%	0%	1.0	0%	0%	0%	1.0
Window 404	Habitable	10%	10%	0%	1.0	0%	0%	0%	1.0
Window 405	Habitable	49%	49%	0%	1.0	15%	15%	0%	1.0
Window 406	Non Habitable	21%	21%	0%	1.0	2%	2%	0%	1.0
Window 407	Non Habitable	10%	10%	0%	1.0	0%	0%	0%	1.0
Window 408	Non Habitable	6%	6%	0%	1.0	0%	0%	0%	1.0
Window 409	Non Habitable	34%	34%	0%	1.0	3%	3%	0%	1.0
Window 410	Non Habitable	13%	13%	0%	1.0	0%	0%	0%	1.0
Window 411	Habitable	9%	9%	0%	1.0	0%	0%	0%	1.0
Window 412	Habitable	46%	46%	0%	1.0	13%	13%	0%	1.0
Window 413	Habitable	10%	10%	0%	1.0	0%	0%	0%	1.0
Window 414	Habitable	47%	47%	0%	1.0	14%	14%	0%	1.0
Window 415	Habitable	12%	12%	0%	1.0	0%	0%	0%	1.0
Window 416	Habitable	49%	49%	0%	1.0	15%	15%	0%	1.0
Window 417	Habitable	88%	88%	0%	1.0	26%	26%	0%	1.0
Window 418	Habitable	84%	84%	0%	1.0	14%	14%	0%	1.0
Window 419	Habitable	84%	84%	0%	1.0	24%	24%	0%	1.0
Window 420	Habitable	98%	98%	0%	1.0	30%	30%	0%	1.0
Window 421	Habitable	48%	48%	0%	1.0	15%	15%	0%	1.0
Window 422	Habitable	44%	44%	0%	1.0	12%	12%	0%	1.0
Window 423	Habitable	48%	48%	0%	1.0	15%	15%	0%	1.0
Window 424	Habitable	48%	48%	0%	1.0	15%	15%	0%	1.0
Window 425	Habitable	49%	49%	0%	1.0	15%	15%	0%	1.0
Window 426	Habitable	48%	48%	0%	1.0	15%	15%	0%	1.0

**Appendix 2.2 - Sunlight to Windows**  
**Regents Park Estate, London NW1 4BX**

Reference	Use Class	Sunlight to Windows							
		Total Sunlight Hours				Winter Sunlight Hours			
		Before	After	Loss	Ratio	Before	After	Loss	Ratio
Window 427	Habitable	48%	48%	0%	1.0	15%	15%	0%	1.0
Window 428	Habitable	49%	49%	0%	1.0	15%	15%	0%	1.0
Window 429	Habitable	49%	49%	0%	1.0	15%	15%	0%	1.0
Window 430	Habitable	45%	45%	0%	1.0	14%	14%	0%	1.0
Window 431	Habitable	48%	48%	0%	1.0	15%	15%	0%	1.0
Window 432	Habitable	49%	49%	0%	1.0	15%	15%	0%	1.0
Window 433	Habitable	49%	49%	0%	1.0	15%	15%	0%	1.0
Window 434	Habitable	49%	49%	0%	1.0	15%	15%	0%	1.0
Window 435	Habitable	49%	49%	0%	1.0	15%	15%	0%	1.0
Window 436	Habitable	49%	49%	0%	1.0	15%	15%	0%	1.0
Window 437	Habitable	49%	49%	0%	1.0	7%	7%	0%	1.0
Window 438	Habitable	45%	45%	0%	1.0	7%	7%	0%	1.0
Window 439	Habitable	50%	50%	0%	1.0	15%	15%	0%	1.0
Window 440	Habitable	42%	42%	0%	1.0	12%	12%	0%	1.0
Window 441	Habitable	42%	42%	0%	1.0	12%	12%	0%	1.0
Window 442	Habitable	83%	83%	0%	1.0	27%	27%	0%	1.0
Window 443	Habitable	83%	83%	0%	1.0	27%	27%	0%	1.0
Window 444	Habitable	86%	86%	0%	1.0	29%	29%	0%	1.0
Window 445	Habitable	42%	42%	0%	1.0	14%	14%	0%	1.0
Window 446	Habitable	85%	85%	0%	1.0	29%	29%	0%	1.0
Window 447	Habitable	47%	47%	0%	1.0	15%	15%	0%	1.0
Window 448	Habitable	86%	86%	0%	1.0	30%	30%	0%	1.0
Window 449	Habitable	48%	48%	0%	1.0	15%	15%	0%	1.0
Window 450	Habitable	86%	86%	0%	1.0	30%	30%	0%	1.0
Window 451	Habitable	49%	49%	0%	1.0	15%	15%	0%	1.0
Window 452	Habitable	86%	86%	0%	1.0	30%	30%	0%	1.0
Window 453	Habitable	49%	49%	0%	1.0	15%	15%	0%	1.0
Window 454	Habitable	86%	86%	0%	1.0	30%	30%	0%	1.0
<u>1 Robert Street</u>									
Window 455	Non Domestic	0%	0%	0%	1.0	0%	0%	0%	1.0
Window 456	Non Domestic	0%	0%	0%	1.0	0%	0%	0%	1.0
Window 457	Non Domestic	1%	1%	0%	1.0	0%	0%	0%	1.0
Window 458	Non Domestic	0%	0%	0%	1.0	0%	0%	0%	1.0

**Appendix 2.2 - Sunlight to Windows**  
**Regents Park Estate, London NW1 4BX**

Reference	Use Class	Sunlight to Windows							
		Total Sunlight Hours				Winter Sunlight Hours			
		Before	After	Loss	Ratio	Before	After	Loss	Ratio
Window 459	Non Domestic	0%	0%	0%	1.0	0%	0%	0%	1.0
Window 460	Non Domestic	24%	24%	0%	1.0	10%	10%	0%	1.0
Window 461	Non Domestic	38%	38%	0%	1.0	13%	13%	0%	1.0
<u>1 to 107 Woodhall Street</u>									
Window 462	Non Habitable	20%	20%	0%	1.0	5%	5%	0%	1.0
Window 463	Non Habitable	0%	0%	0%	1.0	0%	0%	0%	1.0
Window 464	Non Habitable	0%	0%	0%	1.0	0%	0%	0%	1.0
Window 465	Non Habitable	0%	0%	0%	1.0	0%	0%	0%	1.0
Window 466	Non Habitable	34%	34%	0%	1.0	8%	8%	0%	1.0
Window 467	Non Habitable	6%	6%	0%	1.0	0%	0%	0%	1.0
Window 468	Non Habitable	4%	4%	0%	1.0	0%	0%	0%	1.0
Window 469	Non Habitable	40%	40%	0%	1.0	12%	12%	0%	1.0
Window 470	Non Habitable	6%	6%	0%	1.0	0%	0%	0%	1.0
Window 471	Non Habitable	0%	0%	0%	1.0	0%	0%	0%	1.0
Window 472	Non Habitable	44%	44%	0%	1.0	14%	14%	0%	1.0
Window 473	Non Habitable	7%	7%	0%	1.0	0%	0%	0%	1.0
Window 474	Non Habitable	47%	47%	0%	1.0	14%	14%	0%	1.0
Window 475	Non Habitable	8%	8%	0%	1.0	0%	0%	0%	1.0
Window 476	Non Habitable	48%	48%	0%	1.0	14%	14%	0%	1.0
Window 477	Non Habitable	8%	8%	0%	1.0	0%	0%	0%	1.0
Window 478	Non Habitable	49%	49%	0%	1.0	14%	14%	0%	1.0
Window 479	Non Habitable	11%	11%	0%	1.0	0%	0%	0%	1.0
Window 480	Non Habitable	0%	0%	0%	1.0	0%	0%	0%	1.0
Window 481	Non Habitable	0%	0%	0%	1.0	0%	0%	0%	1.0
Window 482	Habitable	3%	3%	0%	1.0	0%	0%	0%	1.0
Window 483	Habitable	0%	0%	0%	1.0	0%	0%	0%	1.0
Window 484	Habitable	6%	6%	0%	1.0	0%	0%	0%	1.0
Window 485	Habitable	8%	8%	0%	1.0	0%	0%	0%	1.0
Window 486	Habitable	9%	9%	0%	1.0	0%	0%	0%	1.0
Window 487	Habitable	11%	11%	0%	1.0	0%	0%	0%	1.0
Window 488	Habitable	4%	4%	0%	1.0	0%	0%	0%	1.0
Window 489	Habitable	4%	4%	0%	1.0	0%	0%	0%	1.0
Window 490	Habitable	3%	3%	0%	1.0	0%	0%	0%	1.0

**Appendix 2.2 - Sunlight to Windows**  
**Regents Park Estate, London NW1 4BX**

Reference	Use Class	Sunlight to Windows							
		Total Sunlight Hours				Winter Sunlight Hours			
		Before	After	Loss	Ratio	Before	After	Loss	Ratio
Window 491	Habitable	2%	2%	0%	1.0	0%	0%	0%	1.0
Window 492	Habitable	0%	0%	0%	1.0	0%	0%	0%	1.0
Window 493	Habitable	2%	2%	0%	1.0	0%	0%	0%	1.0
Window 494	Habitable	3%	3%	0%	1.0	0%	0%	0%	1.0
Window 495	Habitable	3%	3%	0%	1.0	0%	0%	0%	1.0
Window 496	Habitable	5%	5%	0%	1.0	0%	0%	0%	1.0
Window 497	Habitable	3%	3%	0%	1.0	0%	0%	0%	1.0
Window 498	Habitable	2%	2%	0%	1.0	0%	0%	0%	1.0
Window 499	Habitable	2%	2%	0%	1.0	0%	0%	0%	1.0
Window 500	Habitable	4%	4%	0%	1.0	0%	0%	0%	1.0
Window 501	Habitable	0%	0%	0%	1.0	0%	0%	0%	1.0
Window 502	Habitable	7%	7%	0%	1.0	0%	0%	0%	1.0
Window 503	Habitable	9%	9%	0%	1.0	0%	0%	0%	1.0
Window 504	Habitable	10%	10%	0%	1.0	0%	0%	0%	1.0
Window 505	Habitable	10%	10%	0%	1.0	0%	0%	0%	1.0
Window 506	Habitable	0%	0%	0%	1.0	0%	0%	0%	1.0
Window 507	Habitable	0%	0%	0%	1.0	0%	0%	0%	1.0
Window 508	Habitable	2%	2%	0%	1.0	0%	0%	0%	1.0
Window 509	Habitable	2%	2%	0%	1.0	0%	0%	0%	1.0
Window 510	Habitable	2%	2%	0%	1.0	0%	0%	0%	1.0
Window 511	Habitable	2%	2%	0%	1.0	0%	0%	0%	1.0
Window 512	Habitable	0%	0%	0%	1.0	0%	0%	0%	1.0
Window 513	Habitable	8%	8%	0%	1.0	0%	0%	0%	1.0
Window 514	Habitable	9%	9%	0%	1.0	0%	0%	0%	1.0
Window 515	Habitable	10%	10%	0%	1.0	0%	0%	0%	1.0
Window 516	Habitable	10%	10%	0%	1.0	0%	0%	0%	1.0
Window 517	Non Habitable	5%	5%	0%	1.0	0%	0%	0%	1.0
Window 518	Non Habitable	0%	0%	0%	1.0	0%	0%	0%	1.0
Window 519	Non Habitable	8%	8%	0%	1.0	0%	0%	0%	1.0
Window 520	Non Habitable	0%	0%	0%	1.0	0%	0%	0%	1.0
Window 521	Habitable	8%	8%	0%	1.0	0%	0%	0%	1.0
Window 522	Habitable	9%	9%	0%	1.0	0%	0%	0%	1.0
Window 523	Habitable	10%	10%	0%	1.0	0%	0%	0%	1.0

**Appendix 2.2 - Sunlight to Windows**  
**Regents Park Estate, London NW1 4BX**

Reference	Use Class	Sunlight to Windows							
		Total Sunlight Hours				Winter Sunlight Hours			
		Before	After	Loss	Ratio	Before	After	Loss	Ratio
Window 524	Habitable	10%	10%	0%	1.0	0%	0%	0%	1.0

**Appendix 2.2 - Overshadowing to Gardens and Open Spaces  
Regents Park Estate, London NW1 4BX**

Reference	Total Area	Area receiving at least two hours of sunlight on 21st March						
		Before		After		Loss	Ratio	
<u>The Tarns</u>								
Garden 1	522.18 m2	517.98 m2	99%	436.57 m2	84%	81.41 m2	15%	0.85

---





## **APPENDIX 2.3**

### **OVERSHADOWING TO GARDENS AND OPEN SPACES**



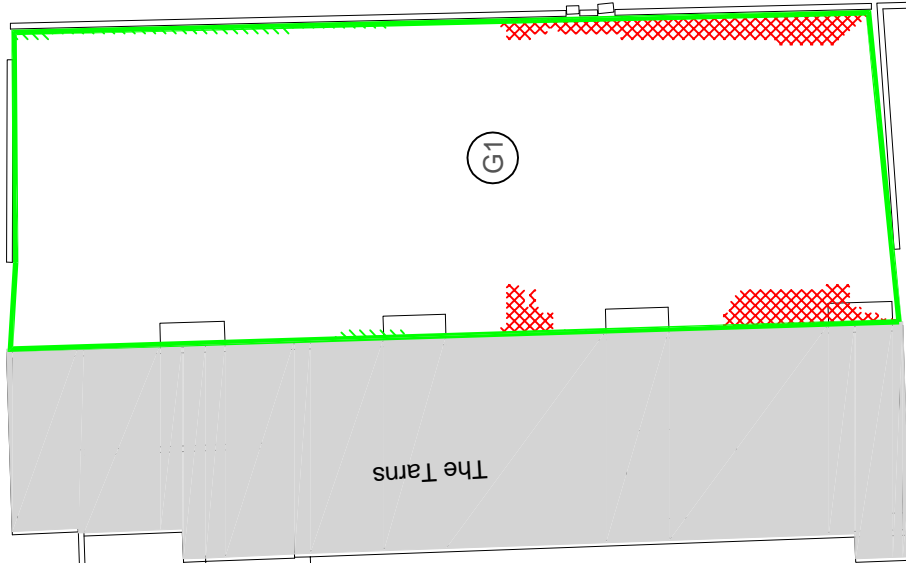
# Appendix 2.3 : Overshadowing to Gardens and Open Spaces

## Key

-  Receives under two hours sunlight on 21st March before and after the development.
-  Receives under two hours sunlight on 21st March before the development; but will receive at least two hours sunlight on 21st March after the development (light improved).
-  Receives at least two hours sunlight on 21st March before the development; but will receive under two hours sunlight after the development (light loss).
-  Receives at least two hours sunlight on 21st March before and after the development.

## Notes:

1. Contours derived in accordance with BRE Guide : Site Layout Planning for Daylight and Sunlight




Project Name: **Regents Park Estate, London NW1 4BX**

Drawing Title: **Appendix 2.3 - Overshadowing to Gardens and Open Spaces**

Scale: **Do not scale**

Drawing No:	1001	Rev:	-
Rev:	01	Date:	
Details of revisions			



**RIGHT OF LIGHT CONSULTING**  
Chartered Surveyors

Burley House  
15 - 17 High Street  
Rayleigh  
Essex SS6 7EW  
Tel: 0800 197 4836

enquiries@right-of-light.co.uk  
www.right-of-light-consulting.com

---

## **APPENDIX 2.4**

### ALTERNATIVE DAYLIGHT AND SUNLIGHT RESULTS

**Appendix 2.4 - Alternative Vertical Sky Component**  
**Regents Park Estate, London NW1 4BX**

Reference	Use Class	Vertical Sky Component			
		Before	After	Loss	Ratio
<u>Rydal Water</u>					
Window 2	Habitable	29.1%	21.4%	7.7%	0.74
Window 5	Habitable	31.1%	26.4%	4.7%	0.85
Window 10	Habitable	34.2%	30.1%	4.1%	0.88
Window 12	Habitable	35.5%	32.1%	3.4%	0.9
Window 15	Habitable	36.7%	34.0%	2.7%	0.93
Window 17	Habitable	37.8%	36.0%	1.8%	0.95
Window 26	Habitable	29.1%	20.7%	8.4%	0.71
Window 27	Habitable	31.4%	22.5%	8.9%	0.72
Window 28	Habitable	33.5%	24.7%	8.8%	0.74
Window 29	Habitable	35.4%	27.0%	8.4%	0.76
Window 30	Habitable	35.0%	27.1%	7.9%	0.77
Window 31	Habitable	36.3%	29.6%	6.7%	0.82
Window 32	Habitable	37.6%	32.3%	5.3%	0.86
Window 38	Habitable	28.8%	19.1%	9.7%	0.66
Window 41	Habitable	31.8%	20.4%	11.4%	0.64
Window 43	Habitable	34.1%	22.7%	11.4%	0.67
Window 45	Habitable	35.5%	25.3%	10.2%	0.71
Window 71	Habitable	28.5%	25.4%	3.1%	0.89
Window 73	Habitable	30.9%	27.5%	3.4%	0.89
Window 75	Habitable	32.7%	29.6%	3.1%	0.91
Window 77	Habitable	34.4%	31.8%	2.6%	0.92
Window 79	Habitable	35.9%	33.9%	2.0%	0.94
Window 89	Habitable	26.4%	15.9%	10.5%	0.6
Window 90	Habitable	30.4%	17.2%	13.2%	0.57
Window 91	Habitable	30.0%	18.0%	12.0%	0.6
Window 92	Habitable	33.8%	19.5%	14.3%	0.58
Window 93	Habitable	33.2%	20.3%	12.9%	0.61
Window 94	Habitable	35.0%	23.1%	11.9%	0.66
Window 95	Habitable	36.3%	26.1%	10.2%	0.72
Window 96	Habitable	37.5%	29.6%	7.9%	0.79

**Appendix 2.4 - Alternative Vertical Sky Component**  
**Regents Park Estate, London NW1 4BX**

Reference	Use Class	Vertical Sky Component			
		Before	After	Loss	Ratio
Window 97	Habitable	38.5%	33.2%	5.3%	0.86
Window 101	Habitable	29.3%	27.7%	1.6%	0.95
Window 103	Habitable	31.5%	29.9%	1.6%	0.95
Window 105	Habitable	33.6%	32.1%	1.5%	0.96
Window 120	Habitable	25.6%	15.3%	10.3%	0.6
Window 122	Habitable	25.0%	15.0%	10.0%	0.6
Window 124	Habitable	25.4%	24.1%	1.3%	0.95
Window 126	Habitable	28.1%	26.5%	1.6%	0.94
Window 128	Habitable	30.4%	28.9%	1.5%	0.95
Window 142	Habitable	24.5%	14.8%	9.7%	0.6
Window 143	Habitable	28.5%	17.0%	11.5%	0.6
Window 144	Habitable	31.8%	19.4%	12.4%	0.61
Window 145	Habitable	33.7%	22.4%	11.3%	0.66
Window 146	Habitable	35.3%	25.7%	9.6%	0.73
Window 147	Habitable	36.8%	29.3%	7.5%	0.8
Window 148	Habitable	38.2%	33.1%	5.1%	0.87
Window 158	Habitable	31.0%	27.9%	3.1%	0.9
Window 159	Habitable	27.9%	16.1%	11.8%	0.58
Window 160	Habitable	33.0%	29.8%	3.2%	0.9
Window 162	Habitable	34.7%	31.8%	2.9%	0.92
Window 164	Habitable	36.1%	33.7%	2.4%	0.93
Window 166	Habitable	37.5%	35.6%	1.9%	0.95
Window 185	Habitable	22.0%	14.2%	7.8%	0.65
Window 205	Habitable	20.6%	13.7%	6.9%	0.67
Window 206	Habitable	23.5%	15.1%	8.4%	0.64
Window 207	Habitable	23.5%	15.8%	7.7%	0.67
Window 208	Habitable	26.3%	18.3%	8.0%	0.7
Window 209	Habitable	28.7%	21.5%	7.2%	0.75
Window 210	Habitable	31.2%	25.2%	6.0%	0.81
Window 211	Habitable	34.0%	29.3%	4.7%	0.86
Window 217	Habitable	19.2%	12.8%	6.4%	0.67
Window 218	Habitable	32.0%	27.8%	4.2%	0.87
Window 221	Habitable	33.9%	29.6%	4.3%	0.87
Window 223	Habitable	35.3%	31.4%	3.9%	0.89
Window 226	Habitable	36.5%	33.3%	3.2%	0.91
Window 228	Habitable	37.6%	35.1%	2.5%	0.93
Window 231	Habitable	38.6%	37.0%	1.6%	0.96

**Appendix 2.4 - Alternative Vertical Sky Component**  
**Regents Park Estate, London NW1 4BX**

Reference	Use Class	Vertical Sky Component			
		Before	After	Loss	Ratio
<u>1 to 107 Woodhall Street</u>					
Window 483	Habitable	29.9%	25.7%	4.2%	0.86
Window 488	Habitable	27.4%	22.7%	4.7%	0.83
Window 501	Habitable	29.4%	25.9%	3.5%	0.88
Window 512	Habitable	29.6%	26.7%	2.9%	0.9

**Appendix 2.4 - Alternative Sunlight to Windows**  
**Regents Park Estate, London NW1 4BX**

Reference	Use Class	Sunlight to Windows							
		Total Sunlight Hours				Winter Sunlight Hours			
		Before	After	Loss	Ratio	Before	After	Loss	Ratio
<u>Rydal Water</u>									
Window 32	Habitable	49%	44%	5%	0.9	14%	14%	0%	1.0
Window 38	Habitable	36%	30%	6%	0.83	5%	5%	0%	1.0
Window 77	Habitable	10%	5%	5%	0.5	0%	0%	0%	1.0
Window 79	Habitable	10%	5%	5%	0.5	0%	0%	0%	1.0
Window 89	Habitable	35%	24%	11%	0.69	7%	7%	0%	1.0
Window 90	Habitable	42%	24%	18%	0.57	9%	8%	1%	0.89
Window 91	Habitable	41%	26%	15%	0.63	8%	8%	0%	1.0
Window 93	Habitable	45%	28%	17%	0.62	10%	9%	1%	0.9
Window 94	Habitable	47%	31%	16%	0.66	12%	11%	1%	0.92
Window 95	Habitable	47%	36%	11%	0.77	12%	11%	1%	0.92
Window 96	Habitable	48%	39%	9%	0.81	13%	11%	2%	0.85
Window 101	Habitable	73%	60%	13%	0.82	18%	17%	1%	0.94
Window 103	Habitable	78%	66%	12%	0.85	22%	21%	1%	0.95
Window 105	Habitable	81%	70%	11%	0.86	25%	24%	1%	0.96
Window 107	Habitable	84%	78%	6%	0.93	28%	27%	1%	0.96
Window 109	Habitable	86%	80%	6%	0.93	29%	27%	2%	0.93
Window 120	Habitable	36%	23%	13%	0.64	8%	8%	0%	1.0
Window 122	Habitable	36%	22%	14%	0.61	8%	7%	1%	0.88
Window 126	Habitable	8%	3%	5%	0.38	0%	0%	0%	1.0
Window 128	Habitable	9%	4%	5%	0.44	0%	0%	0%	1.0
Window 130	Habitable	9%	4%	5%	0.44	0%	0%	0%	1.0
Window 132	Habitable	10%	5%	5%	0.5	0%	0%	0%	1.0
Window 142	Habitable	36%	22%	14%	0.61	8%	7%	1%	0.88
Window 143	Habitable	42%	25%	17%	0.6	9%	8%	1%	0.89
Window 144	Habitable	48%	29%	19%	0.6	13%	10%	3%	0.77
Window 145	Habitable	48%	31%	17%	0.65	13%	10%	3%	0.77
Window 146	Habitable	48%	37%	11%	0.77	13%	11%	2%	0.85
Window 147	Habitable	48%	40%	8%	0.83	13%	11%	2%	0.85
Window 158	Habitable	73%	57%	16%	0.78	19%	17%	2%	0.89
Window 159	Habitable	44%	22%	22%	0.5	10%	7%	3%	0.7
Window 160	Habitable	80%	65%	15%	0.81	25%	21%	4%	0.84
Window 162	Habitable	82%	68%	14%	0.83	26%	22%	4%	0.85
Window 164	Habitable	83%	75%	8%	0.9	27%	24%	3%	0.89
Window 185	Habitable	39%	22%	17%	0.56	9%	6%	3%	0.67
Window 205	Habitable	38%	21%	17%	0.55	9%	6%	3%	0.67

**Appendix 2.4 - Alternative Sunlight to Windows**  
**Regents Park Estate, London NW1 4BX**

Reference	Use Class	Sunlight to Windows							
		Total Sunlight Hours				Winter Sunlight Hours			
		Before	After	Loss	Ratio	Before	After	Loss	Ratio
Window 206	Habitable	45%	25%	20%	0.56	13%	9%	4%	0.69
Window 207	Habitable	41%	23%	18%	0.56	11%	8%	3%	0.73
Window 208	Habitable	44%	27%	17%	0.61	13%	8%	5%	0.62
Window 209	Habitable	45%	30%	15%	0.67	13%	8%	5%	0.62
Window 210	Habitable	45%	37%	8%	0.82	13%	9%	4%	0.69
Window 217	Habitable	40%	23%	17%	0.58	10%	7%	3%	0.7
Window 218	Habitable	78%	60%	18%	0.77	23%	20%	3%	0.87
Window 221	Habitable	80%	65%	15%	0.81	25%	21%	4%	0.84
Window 223	Habitable	82%	67%	15%	0.82	26%	21%	5%	0.81
Window 226	Habitable	83%	75%	8%	0.9	27%	22%	5%	0.81
Window 228	Habitable	85%	80%	5%	0.94	29%	26%	3%	0.9
<u>The Tarns</u>									
Window 260	Habitable	39%	16%	23%	0.41	8%	0%	8%	0.0
Window 261	Habitable	24%	17%	7%	0.71	8%	1%	7%	0.13
Window 262	Habitable	46%	20%	26%	0.43	12%	1%	11%	0.08
Window 263	Habitable	26%	18%	8%	0.69	9%	1%	8%	0.11
Window 264	Habitable	49%	29%	20%	0.59	14%	2%	12%	0.14
Window 265	Habitable	28%	20%	8%	0.71	11%	3%	8%	0.27
Window 267	Habitable	32%	17%	15%	0.53	5%	1%	4%	0.2
Window 268	Habitable	37%	20%	17%	0.54	11%	1%	10%	0.09
Window 269	Habitable	39%	26%	13%	0.67	6%	2%	4%	0.33
Window 270	Habitable	42%	26%	16%	0.62	13%	2%	11%	0.15
Window 271	Habitable	40%	31%	9%	0.78	7%	3%	4%	0.43
Window 272	Habitable	44%	31%	13%	0.7	14%	3%	11%	0.21
Window 275	Habitable	38%	22%	16%	0.58	11%	2%	9%	0.18
Window 276	Habitable	21%	14%	7%	0.67	9%	2%	7%	0.22
Window 277	Habitable	41%	28%	13%	0.68	11%	3%	8%	0.27
Window 278	Habitable	26%	18%	8%	0.69	11%	3%	8%	0.27
Window 279	Habitable	47%	36%	11%	0.77	13%	4%	9%	0.31
Window 280	Habitable	30%	22%	8%	0.73	13%	5%	8%	0.38

**Appendix 2.4 - Alternative Sunlight to Windows**  
**Regents Park Estate, London NW1 4BX**

Reference	Use Class	Sunlight to Windows							
		Total Sunlight Hours				Winter Sunlight Hours			
		Before	After	Loss	Ratio	Before	After	Loss	Ratio



---

## **APPENDIX 3**

### VARNDELL STREET

---

**APPENDIX 3.1**

WINDOW & GARDEN KEY

**Window & Garden Key**

**Key**

Window 1 ● Window reference



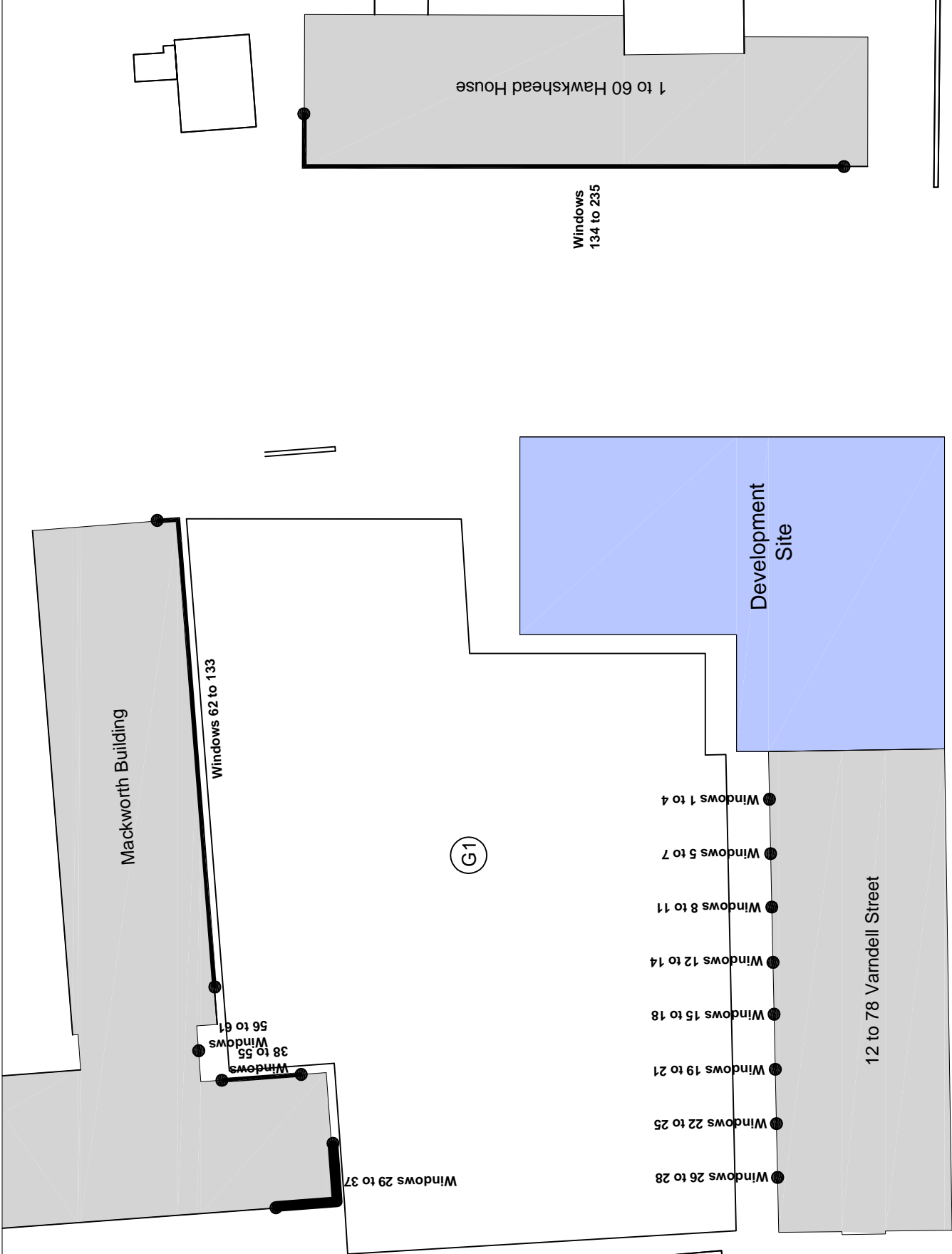
Development site



Neighbouring Properties



Neighbouring Gardens and Amenity Areas



Project Name: **Regents Park Estate, London NW1 4BX**

Drawing Title: **Appendix 31 - Neighbouring Windows**

Scale:	Do not scale		
Drawing No:	1 of 2		
Rev:	-		
Rev	Date	Drawn by	Checked by



**RIGHT OF LIGHT CONSULTING**  
Chartered Surveyors

Burley House  
15 - 17 High Street  
Rayleigh  
Essex SS6 7EW  
Tel: 0800 197 4836

enquiries@right-of-light.co.uk  
www.right-of-light-consulting.com

**Window & Garden Key**

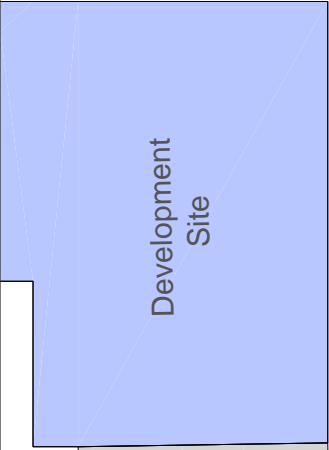
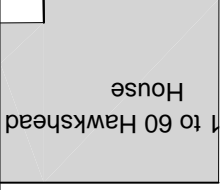
**Key**

Window 1 ● Window reference

Development site

Neighbouring Properties

Neighbouring Gardens and Amenity Areas



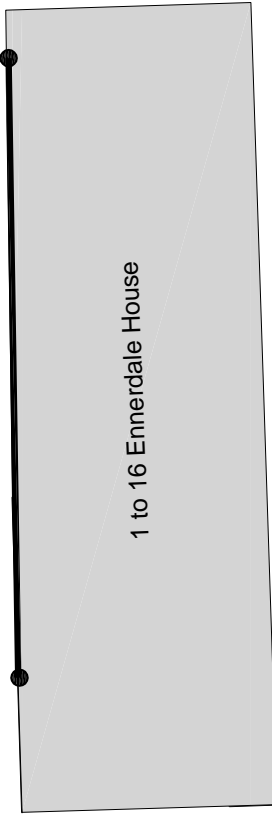
Windows 236 to 247

Windows 248 to 257

Windows 258 to 262

Windows 263 to 267

Windows 268 to 404



1 to 20 Stanhope Street



Project Name: **Regents Park Estate, London NW1 4BX**

Drawing Title: **Appendix 3.1 - Neighbouring Windows**

Scale: **Do not scale**

Drawing No: **2 of 2**

Rev: **-**

Rev. -

Rev. -

Rev. -

Rev. -

Rev. -

Rev. -

Rev. -

Rev. -



**RIGHT OF LIGHT CONSULTING**  
Chartered Surveyors

Burley House  
15 - 17 High Street  
Rayleigh  
Essex SS6 7EW

Tel. 0800 197 4838

enquiries@right-of-light.co.uk  
www.right-of-light-consulting.com

## Neighbouring Windows



12 to 78 Varndell Street



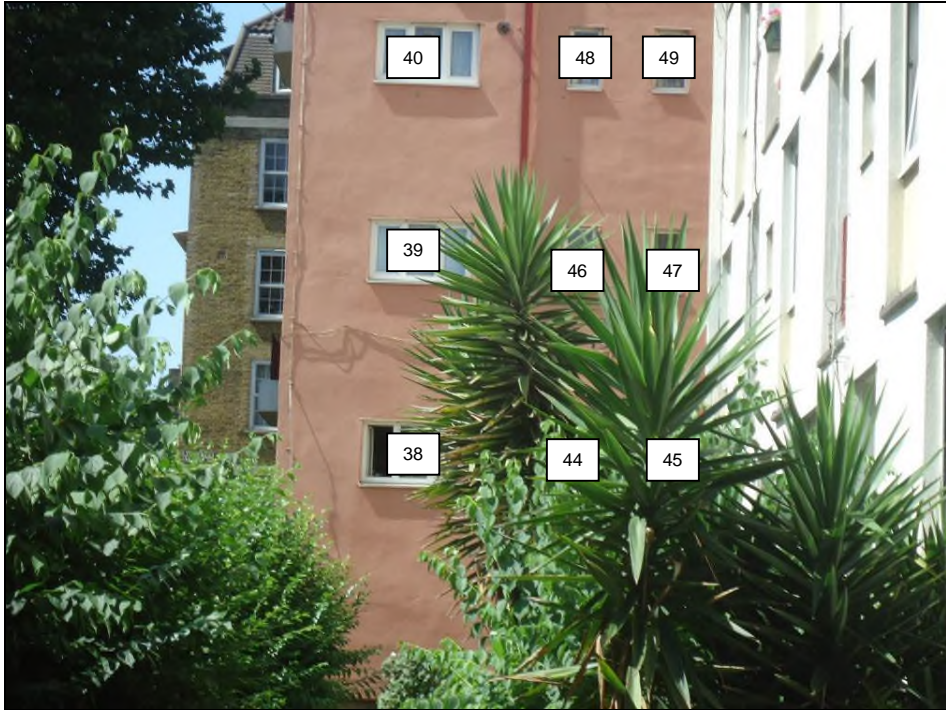
12 to 78 Varndell Street



**12 to 78 Vardell Street**



**Mackworth building**



**Mackworth building**



**Mackworth building**



**Mackworth building**



**Mackworth building**





**Mackworth building**



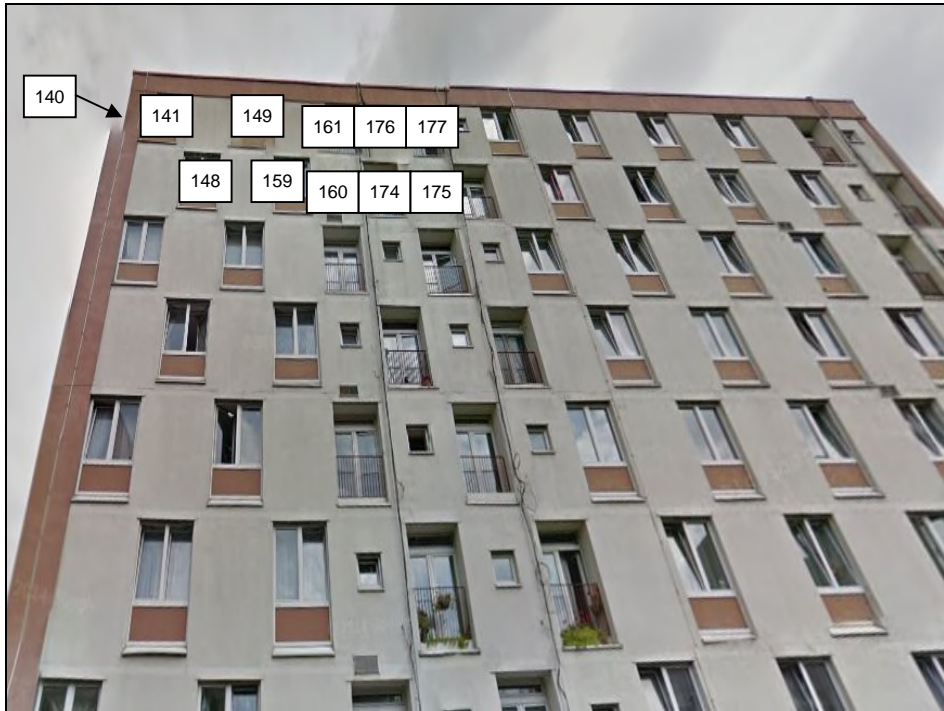
**Mackworth building**



**Mackworth building**



**1 to 60 Hawkshead House**



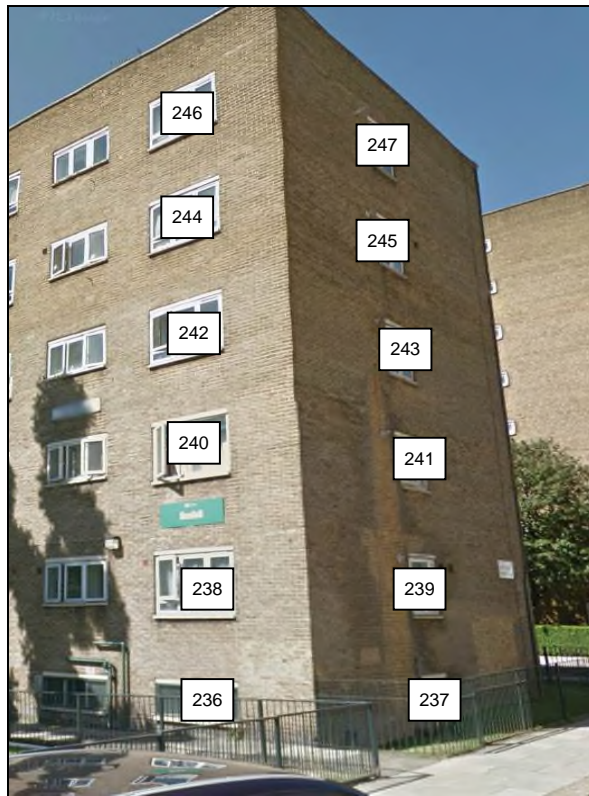
**1 to 60 Hawkshead House**



**1 to 60 Hawkshead House**



**1 to 60 Hawkshead House**



**1 to 20 Stanhope Street**



**1 to 20 Stanhope Street**



**1 to 16 Ennerdale House**



**1 to 16 Ennerdale House**



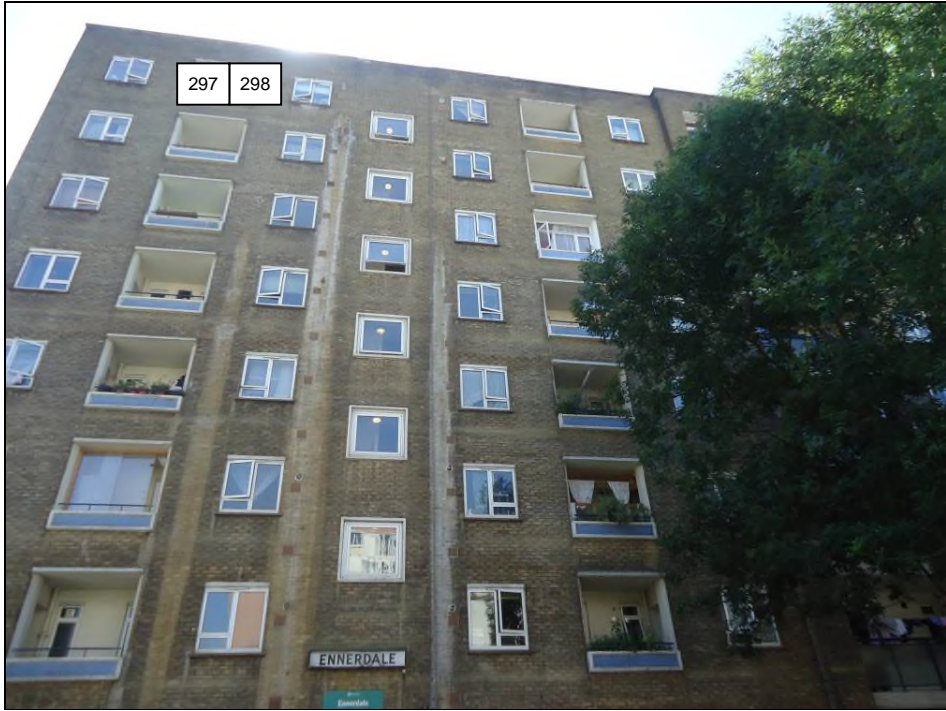
**1 to 16 Ennerdale House**



**1 to 16 Ennerdale House**



**1 to 16 Ennerdale House**



**1 to 16 Ennerdale House**

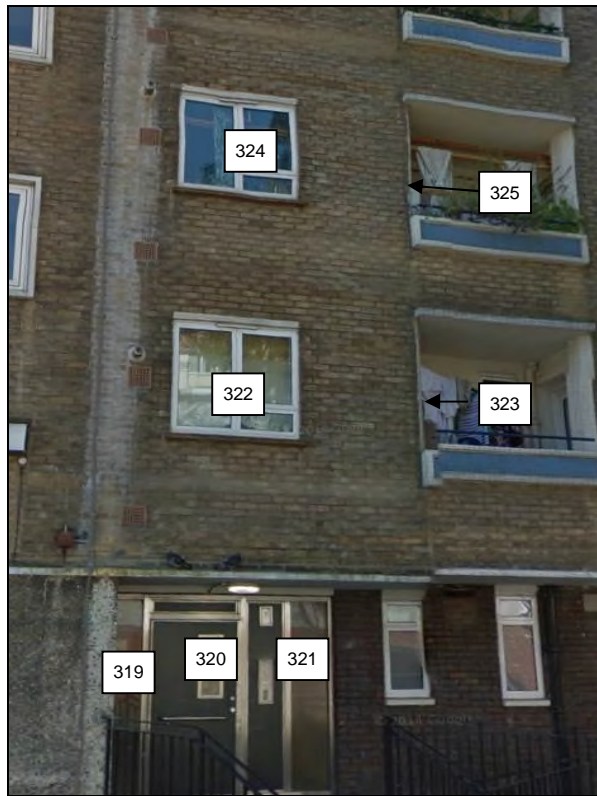


**1 to 16 Ennerdale House**





**1 to 16 Ennerdale House**



**1 to 16 Ennerdale House**



**1 to 16 Ennerdale House**



**1 to 16 Ennerdale House**



**1 to 16 Ennerdale House**



**1 to 16 Ennerdale House**



**1 to 16 Ennerdale House**



**1 to 16 Ennerdale House**



**1 to 16 Ennerdale House**



**1 to 16 Ennerdale House**



**1 to 16 Ennerdale House**



**1 to 16 Ennerdale House**



**1 to 16 Ennerdale House**



**1 to 16 Ennerdale House**



**1 to 16 Ennerdale House**



**Amenity Garden**



---

**APPENDIX 3.2**

**DAYLIGHT AND SUNLIGHT RESULTS**

**Appendix 3.2 - Vertical Sky Component**  
**Regents Park Estate London NW1 4BX**

Reference	Use Class	Vertical Sky Component			
		Before	After	Loss	Ratio
<u>12 to 78 Varndell Street</u>					
Window 1	Habitable	18.6%	14.9%	3.7%	0.8
Window 2	Habitable	23.1%	17.3%	5.8%	0.75
Window 3	Habitable	25.0%	18.9%	6.1%	0.76
Window 4	Habitable	25.1%	21.4%	3.7%	0.85
Window 5	Habitable	16.7%	15.1%	1.6%	0.9
Window 6	Habitable	23.1%	21.3%	1.8%	0.92
Window 7	Habitable	25.1%	24.0%	1.1%	0.96
Window 8	Habitable	19.6%	19.0%	0.6%	0.97
Window 9	Habitable	23.4%	22.8%	0.6%	0.97
Window 10	Habitable	25.2%	24.7%	0.5%	0.98
Window 11	Habitable	25.4%	25.0%	0.4%	0.98
Window 12	Habitable	17.0%	16.8%	0.2%	0.99
Window 13	Habitable	23.6%	23.2%	0.4%	0.98
Window 14	Habitable	25.5%	25.3%	0.2%	0.99
Window 15	Habitable	19.9%	19.8%	0.1%	0.99
Window 16	Habitable	24.2%	24.0%	0.2%	0.99
Window 17	Habitable	25.9%	25.8%	0.1%	1.0
Window 18	Habitable	26.2%	26.1%	0.1%	1.0
Window 19	Habitable	16.6%	16.5%	0.1%	0.99
Window 20	Habitable	24.8%	24.7%	0.1%	1.0
Window 21	Habitable	26.7%	26.6%	0.1%	1.0
Window 22	Habitable	18.6%	18.6%	0.0%	1.0
Window 23	Habitable	26.0%	26.0%	0.0%	1.0
Window 24	Habitable	27.6%	27.5%	0.1%	1.0
Window 25	Habitable	27.9%	27.9%	0.0%	1.0
Window 26	Habitable	13.8%	13.7%	0.1%	0.99
Window 27	Habitable	26.6%	26.5%	0.1%	1.0
Window 28	Habitable	28.4%	28.4%	0.0%	1.0
<u>Mackworth building</u>					
Window 29	Living Room	25.8%	25.8%	0.0%	1.0
Window 30	Living Room	29.2%	27.9%	1.3%	0.96
Window 31	Living Room	34.1%	33.1%	1.0%	0.97

**Appendix 3.2 - Vertical Sky Component**  
**Regents Park Estate London NW1 4BX**

Reference	Use Class	Vertical Sky Component			
		Before	After	Loss	Ratio
Window 32	Living Room	31.3%	31.3%	0.0%	1.0
Window 33	Living Room	31.8%	31.1%	0.7%	0.98
Window 34	Living Room	36.3%	35.9%	0.4%	0.99
Window 35	Living Room	36.4%	36.4%	0.0%	1.0
Window 36	Living Room	33.6%	33.5%	0.1%	1.0
Window 37	Living Room	37.8%	37.7%	0.1%	1.0
Window 38	Kitchen	18.7%	17.6%	1.1%	0.94
Window 39	Kitchen	19.8%	18.9%	0.9%	0.95
Window 40	Kitchen	21.0%	20.4%	0.6%	0.97
Window 41	Kitchen	22.4%	22.0%	0.4%	0.98
Window 42	Kitchen	24.1%	24.0%	0.1%	1.0
Window 43	Kitchen	26.3%	26.3%	0.0%	1.0
Window 44	Non Habitable	17.0%	16.0%	1.0%	0.94
Window 45	Non Habitable	16.0%	15.2%	0.8%	0.95
Window 46	Non Habitable	17.8%	17.1%	0.7%	0.96
Window 47	Non Habitable	16.7%	16.0%	0.7%	0.96
Window 48	Non Habitable	18.8%	18.3%	0.5%	0.97
Window 49	Non Habitable	17.5%	17.1%	0.4%	0.98
Window 50	Non Habitable	19.7%	19.4%	0.3%	0.98
Window 51	Non Habitable	18.2%	17.9%	0.3%	0.98
Window 52	Non Habitable	21.0%	20.9%	0.1%	1.0
Window 53	Non Habitable	19.1%	19.0%	0.1%	0.99
Window 54	Non Habitable	22.5%	22.5%	0.0%	1.0
Window 55	Non Habitable	20.1%	20.1%	0.0%	1.0
Window 56	Habitable	15.6%	14.5%	1.1%	0.93
Window 57	Habitable	16.4%	15.6%	0.8%	0.95
Window 58	Habitable	17.1%	16.5%	0.6%	0.96
Window 59	Habitable	17.8%	17.5%	0.3%	0.98
Window 60	Habitable	18.5%	18.4%	0.1%	0.99
Window 61	Habitable	19.4%	19.3%	0.1%	0.99
Window 62	Bedroom	26.9%	25.7%	1.2%	0.96
Window 63	Bedroom	29.5%	28.9%	0.6%	0.98
Window 64	Bedroom	31.7%	31.6%	0.1%	1.0

**Appendix 3.2 - Vertical Sky Component**  
**Regents Park Estate London NW1 4BX**

Reference	Use Class	Vertical Sky Component			
		Before	After	Loss	Ratio
Window 65	Bedroom	27.3%	25.5%	1.8%	0.93
Window 66	Bedroom	30.2%	29.3%	0.9%	0.97
Window 67	Bedroom	32.6%	32.3%	0.3%	0.99
Window 68	Bedroom	35.2%	35.2%	0.0%	1.0
Window 69	Living Room	28.4%	26.4%	2.0%	0.93
Window 70	Living Room	29.0%	26.8%	2.2%	0.92
Window 71	Living Room	29.8%	28.3%	1.5%	0.95
Window 72	Living Room	30.7%	29.2%	1.5%	0.95
Window 73	Living Room	31.4%	30.4%	1.0%	0.97
Window 74	Living Room	32.1%	31.0%	1.1%	0.97
Window 75	Living Room	32.7%	32.0%	0.7%	0.98
Window 76	Living Room	33.6%	32.9%	0.7%	0.98
Window 77	Living Room	33.9%	33.6%	0.3%	0.99
Window 78	Living Room	34.6%	34.2%	0.4%	0.99
Window 79	Living Room	34.9%	34.8%	0.1%	1.0
Window 80	Living Room	35.9%	35.8%	0.1%	1.0
Window 81	Living Room	36.3%	36.3%	0.0%	1.0
Window 82	Living Room	36.9%	36.9%	0.0%	1.0
Window 83	Bedroom	30.0%	27.5%	2.5%	0.92
Window 84	Bedroom	31.3%	29.6%	1.7%	0.95
Window 85	Bedroom	33.1%	31.9%	1.2%	0.96
Window 86	Bedroom	34.2%	33.5%	0.7%	0.98
Window 87	Bedroom	35.7%	35.3%	0.4%	0.99
Window 88	Bedroom	36.4%	36.3%	0.1%	1.0
Window 89	Bedroom	37.8%	37.8%	0.0%	1.0
Window 90	Living Room	30.1%	27.4%	2.7%	0.91
Window 91	Living Room	30.0%	27.1%	2.9%	0.9
Window 92	Living Room	31.5%	29.5%	2.0%	0.94
Window 93	Living Room	31.7%	29.8%	1.9%	0.94
Window 94	Living Room	33.2%	31.9%	1.3%	0.96
Window 95	Living Room	33.1%	31.8%	1.3%	0.96
Window 96	Living Room	34.4%	33.5%	0.9%	0.97
Window 97	Living Room	34.7%	33.8%	0.9%	0.97

**Appendix 3.2 - Vertical Sky Component**  
**Regents Park Estate London NW1 4BX**

Reference	Use Class	Vertical Sky Component			
		Before	After	Loss	Ratio
Window 98	Living Room	35.7%	35.3%	0.4%	0.99
Window 99	Living Room	35.7%	35.3%	0.4%	0.99
Window 100	Living Room	36.7%	36.5%	0.2%	0.99
Window 101	Living Room	36.9%	36.7%	0.2%	0.99
Window 102	Living Room	37.8%	37.8%	0.0%	1.0
Window 103	Living Room	37.9%	37.9%	0.0%	1.0
Window 104	Bedroom	30.1%	27.1%	3.0%	0.9
Window 105	Bedroom	31.8%	29.8%	2.0%	0.94
Window 106	Bedroom	33.3%	31.9%	1.4%	0.96
Window 107	Bedroom	34.7%	33.9%	0.8%	0.98
Window 108	Bedroom	35.9%	35.4%	0.5%	0.99
Window 109	Bedroom	37.1%	36.9%	0.2%	0.99
Window 110	Bedroom	38.1%	38.1%	0.0%	1.0
Window 111	Living Room	29.9%	26.8%	3.1%	0.9
Window 112	Living Room	29.6%	26.6%	3.0%	0.9
Window 113	Living Room	31.3%	29.2%	2.1%	0.93
Window 114	Living Room	31.3%	29.4%	1.9%	0.94
Window 115	Living Room	33.1%	31.8%	1.3%	0.96
Window 116	Living Room	32.8%	31.6%	1.2%	0.96
Window 117	Living Room	34.4%	33.5%	0.9%	0.97
Window 118	Living Room	34.4%	33.7%	0.7%	0.98
Window 119	Living Room	35.8%	35.4%	0.4%	0.99
Window 120	Living Room	35.7%	35.3%	0.4%	0.99
Window 121	Living Room	36.8%	36.6%	0.2%	0.99
Window 122	Living Room	36.9%	36.7%	0.2%	0.99
Window 123	Living Room	38.0%	38.0%	0.0%	1.0
Window 124	Living Room	38.0%	38.0%	0.0%	1.0
Window 125	Bedroom	29.3%	26.5%	2.8%	0.9
Window 126	Bedroom	31.1%	29.3%	1.8%	0.94
Window 127	Bedroom	32.6%	31.6%	1.0%	0.97
Window 128	Bedroom	34.3%	33.7%	0.6%	0.98
Window 129	Bedroom	35.5%	35.3%	0.2%	0.99
Window 130	Bedroom	36.9%	36.8%	0.1%	1.0

**Appendix 3.2 - Vertical Sky Component**  
**Regents Park Estate London NW1 4BX**

Reference	Use Class	Vertical Sky Component			
		Before	After	Loss	Ratio
Window 131	Bedroom	38.0%	38.0%	0.0%	1.0
Window 132	Bedroom	28.6%	26.5%	2.1%	0.93
Window 133	Bedroom	25.4%	25.4%	0.0%	1.0
<u>1 to 60 Hawkshead House</u>					
Window 134	Habitable	28.4%	28.4%	0.0%	1.0
Window 135	Habitable	29.1%	27.1%	2.0%	0.93
Window 136	Habitable	31.4%	31.4%	0.0%	1.0
Window 137	Habitable	31.6%	30.8%	0.8%	0.97
Window 138	Habitable	34.5%	34.5%	0.0%	1.0
Window 139	Habitable	34.1%	33.9%	0.2%	0.99
Window 140	Habitable	37.3%	37.3%	0.0%	1.0
Window 141	Habitable	36.6%	36.6%	0.0%	1.0
Window 142	Habitable	27.9%	24.9%	3.0%	0.89
Window 143	Habitable	29.2%	26.5%	2.7%	0.91
Window 144	Habitable	30.4%	28.9%	1.5%	0.95
Window 145	Habitable	31.9%	30.8%	1.1%	0.97
Window 146	Habitable	33.0%	32.4%	0.6%	0.98
Window 147	Habitable	34.4%	34.0%	0.4%	0.99
Window 148	Habitable	35.5%	35.4%	0.1%	1.0
Window 149	Habitable	36.8%	36.8%	0.0%	1.0
Window 150	Habitable	28.0%	24.0%	4.0%	0.86
Window 151	Habitable	27.2%	22.5%	4.7%	0.83
Window 152	Habitable	19.9%	16.3%	3.6%	0.82
Window 153	Habitable	30.7%	28.6%	2.1%	0.93
Window 154	Habitable	29.9%	27.5%	2.4%	0.92
Window 155	Habitable	22.5%	21.0%	1.5%	0.93
Window 156	Habitable	33.3%	32.5%	0.8%	0.98
Window 157	Habitable	32.7%	31.7%	1.0%	0.97
Window 158	Habitable	24.5%	23.9%	0.6%	0.98
Window 159	Habitable	35.8%	35.6%	0.2%	0.99
Window 160	Habitable	35.1%	34.8%	0.3%	0.99
Window 161	Habitable	26.9%	26.9%	0.0%	1.0
Window 162	Habitable	18.8%	13.7%	5.1%	0.73

**Appendix 3.2 - Vertical Sky Component**  
**Regents Park Estate London NW1 4BX**

Reference	Use Class	Vertical Sky Component			
		Before	After	Loss	Ratio
Window 163	Non Habitable	27.4%	21.7%	5.7%	0.79
Window 164	Non Habitable	28.6%	24.6%	4.0%	0.86
Window 165	Habitable	20.0%	15.7%	4.3%	0.79
Window 166	Habitable	21.0%	18.3%	2.7%	0.87
Window 167	Non Habitable	30.2%	27.2%	3.0%	0.9
Window 168	Non Habitable	31.4%	29.7%	1.7%	0.95
Window 169	Habitable	22.6%	20.6%	2.0%	0.91
Window 170	Habitable	23.8%	22.5%	1.3%	0.95
Window 171	Non Habitable	32.9%	31.5%	1.4%	0.96
Window 172	Non Habitable	34.0%	33.3%	0.7%	0.98
Window 173	Habitable	24.3%	23.5%	0.8%	0.97
Window 174	Habitable	25.7%	25.4%	0.3%	0.99
Window 175	Non Habitable	35.2%	34.9%	0.3%	0.99
Window 176	Non Habitable	36.3%	36.3%	0.0%	1.0
Window 177	Habitable	27.3%	27.3%	0.0%	1.0
Window 178	Habitable	19.1%	13.2%	5.9%	0.69
Window 179	Non Habitable	28.9%	24.2%	4.7%	0.84
Window 180	Habitable	29.9%	25.0%	4.9%	0.84
Window 181	Habitable	21.9%	18.6%	3.3%	0.85
Window 182	Non Habitable	31.8%	29.6%	2.2%	0.93
Window 183	Habitable	21.3%	18.9%	2.4%	0.89
Window 184	Habitable	24.3%	22.7%	1.6%	0.93
Window 185	Non Habitable	34.2%	33.3%	0.9%	0.97
Window 186	Habitable	35.1%	34.1%	1.0%	0.97
Window 187	Habitable	25.9%	25.6%	0.3%	0.99
Window 188	Non Habitable	36.4%	36.4%	0.0%	1.0
Window 189	Habitable	37.2%	37.2%	0.0%	1.0
Window 190	Non Habitable	28.5%	22.1%	6.4%	0.78
Window 191	Non Habitable	19.1%	12.4%	6.7%	0.65
Window 192	Habitable	30.1%	24.6%	5.5%	0.82
Window 193	Habitable	31.4%	27.6%	3.8%	0.88
Window 194	Habitable	32.9%	29.8%	3.1%	0.91
Window 195	Habitable	34.1%	32.1%	2.0%	0.94

**Appendix 3.2 - Vertical Sky Component**  
**Regents Park Estate London NW1 4BX**

Reference	Use Class	Vertical Sky Component			
		Before	After	Loss	Ratio
Window 196	Habitable	35.3%	34.0%	1.3%	0.96
Window 197	Habitable	36.3%	35.9%	0.4%	0.99
Window 198	Habitable	37.3%	37.3%	0.0%	1.0
Window 199	Non Habitable	2.3%	0.1%	2.2%	0.04
Window 200	Non Habitable	18.3%	11.3%	7.0%	0.62
Window 201	Non Habitable	19.8%	12.8%	7.0%	0.65
Window 202	Habitable	30.2%	24.2%	6.0%	0.8
Window 203	Habitable	31.6%	27.2%	4.4%	0.86
Window 204	Habitable	33.1%	29.3%	3.8%	0.89
Window 205	Habitable	34.3%	31.7%	2.6%	0.92
Window 206	Habitable	35.4%	33.8%	1.6%	0.95
Window 207	Habitable	36.4%	35.9%	0.5%	0.99
Window 208	Habitable	37.4%	37.4%	0.0%	1.0
Window 209	Habitable	30.2%	23.7%	6.5%	0.78
Window 210	Habitable	31.7%	26.6%	5.1%	0.84
Window 211	Habitable	33.1%	28.6%	4.5%	0.86
Window 212	Habitable	34.3%	31.3%	3.0%	0.91
Window 213	Habitable	35.5%	33.5%	2.0%	0.94
Window 214	Habitable	36.5%	35.9%	0.6%	0.98
Window 215	Habitable	37.5%	37.5%	0.0%	1.0
Window 216	Habitable	28.6%	21.2%	7.4%	0.74
Window 217	Non Habitable	27.7%	20.5%	7.2%	0.74
Window 218	Habitable	21.0%	14.7%	6.3%	0.7
Window 219	Habitable	31.7%	26.0%	5.7%	0.82
Window 220	Non Habitable	30.8%	25.1%	5.7%	0.81
Window 221	Habitable	23.4%	18.8%	4.6%	0.8
Window 222	Habitable	34.4%	30.9%	3.5%	0.9
Window 223	Non Habitable	33.5%	29.9%	3.6%	0.89
Window 224	Habitable	25.6%	23.5%	2.1%	0.92
Window 225	Habitable	36.5%	35.8%	0.7%	0.98
Window 226	Non Habitable	35.7%	34.8%	0.9%	0.97
Window 227	Habitable	28.2%	28.2%	0.0%	1.0
Window 228	Habitable	19.8%	13.2%	6.6%	0.67



**Appendix 3.2 - Vertical Sky Component**  
**Regents Park Estate London NW1 4BX**

Reference	Use Class	Vertical Sky Component			
		Before	After	Loss	Ratio
Window 229	Non Habitable	29.1%	22.8%	6.3%	0.78
Window 230	Habitable	22.4%	17.0%	5.4%	0.76
Window 231	Non Habitable	32.3%	27.6%	4.7%	0.85
Window 232	Habitable	24.8%	21.4%	3.4%	0.86
Window 233	Non Habitable	34.7%	32.6%	2.1%	0.94
Window 234	Habitable	26.8%	26.0%	0.8%	0.97
Window 235	Non Habitable	36.8%	36.8%	0.0%	1.0
<u>1 to 20 Stanhope Street</u>					
Window 236	Non Habitable	32.7%	32.7%	0.0%	1.0
Window 237	Habitable	26.8%	25.6%	1.2%	0.96
Window 238	Habitable	34.2%	34.2%	0.0%	1.0
Window 239	Habitable	27.8%	26.7%	1.1%	0.96
Window 240	Habitable	35.2%	35.2%	0.0%	1.0
Window 241	Habitable	29.2%	28.3%	0.9%	0.97
Window 242	Habitable	36.0%	36.0%	0.0%	1.0
Window 243	Habitable	30.7%	30.0%	0.7%	0.98
Window 244	Habitable	36.8%	36.8%	0.0%	1.0
Window 245	Habitable	32.3%	31.8%	0.5%	0.98
Window 246	Habitable	37.5%	37.5%	0.0%	1.0
Window 247	Habitable	33.9%	33.6%	0.3%	0.99
Window 248	Habitable	20.2%	18.3%	1.9%	0.91
Window 249	Habitable	11.9%	10.3%	1.6%	0.87
Window 250	Habitable	21.5%	19.8%	1.7%	0.92
Window 251	Habitable	12.6%	11.2%	1.4%	0.89
Window 252	Habitable	22.7%	21.4%	1.3%	0.94
Window 253	Habitable	13.2%	12.1%	1.1%	0.92
Window 254	Habitable	23.9%	22.9%	1.0%	0.96
Window 255	Habitable	14.4%	13.7%	0.7%	0.95
Window 256	Habitable	33.9%	33.3%	0.6%	0.98
Window 257	Habitable	34.1%	33.6%	0.5%	0.99
Window 258	Habitable	27.1%	25.7%	1.4%	0.95
Window 259	Habitable	28.3%	27.1%	1.2%	0.96
Window 260	Habitable	29.6%	28.7%	0.9%	0.97

**Appendix 3.2 - Vertical Sky Component**  
**Regents Park Estate London NW1 4BX**

Reference	Use Class	Vertical Sky Component			
		Before	After	Loss	Ratio
Window 261	Habitable	31.5%	30.9%	0.6%	0.98
Window 262	Habitable	34.0%	33.6%	0.4%	0.99
Window 263	Habitable	28.4%	27.3%	1.1%	0.96
Window 264	Habitable	29.7%	28.8%	0.9%	0.97
Window 265	Habitable	31.1%	30.4%	0.7%	0.98
Window 266	Habitable	32.6%	32.1%	0.5%	0.98
Window 267	Habitable	34.1%	33.8%	0.3%	0.99
<u>1 to 16 Ennerdale House</u>					
Window 268	Non Habitable	5.8%	3.1%	2.7%	0.53
Window 269	Habitable	30.2%	24.8%	5.4%	0.82
Window 270	Habitable	4.0%	3.5%	0.5%	0.88
Window 271	Habitable	31.9%	27.3%	4.6%	0.86
Window 272	Habitable	4.8%	4.3%	0.5%	0.9
Window 273	Habitable	33.4%	29.9%	3.5%	0.9
Window 274	Habitable	5.1%	4.8%	0.3%	0.94
Window 275	Habitable	34.8%	32.8%	2.0%	0.94
Window 276	Habitable	5.2%	5.0%	0.2%	0.96
Window 277	Habitable	36.1%	35.7%	0.4%	0.99
Window 278	Habitable	5.3%	5.3%	0.0%	1.0
Window 279	Habitable	37.4%	37.4%	0.0%	1.0
Window 280	Habitable	5.6%	5.6%	0.0%	1.0
Window 281	Habitable	38.5%	38.5%	0.0%	1.0
Window 282	Habitable	5.8%	5.8%	0.0%	1.0
Window 283	Non Habitable	5.9%	2.9%	3.0%	0.49
Window 284	Non Habitable	5.5%	2.4%	3.1%	0.44
Window 285	Habitable	4.2%	1.5%	2.7%	0.36
Window 286	Habitable	3.7%	1.0%	2.7%	0.27
Window 287	Habitable	5.1%	2.0%	3.1%	0.39
Window 288	Habitable	4.3%	1.3%	3.0%	0.3
Window 289	Habitable	5.8%	2.6%	3.2%	0.45
Window 290	Habitable	5.1%	2.0%	3.1%	0.39
Window 291	Habitable	6.5%	4.7%	1.8%	0.72
Window 292	Habitable	6.0%	4.2%	1.8%	0.7

**Appendix 3.2 - Vertical Sky Component**  
**Regents Park Estate London NW1 4BX**

Reference	Use Class	Vertical Sky Component			
		Before	After	Loss	Ratio
Window 293	Habitable	7.2%	6.8%	0.4%	0.94
Window 294	Habitable	6.6%	6.2%	0.4%	0.94
Window 295	Habitable	7.9%	7.9%	0.0%	1.0
Window 296	Habitable	7.4%	7.4%	0.0%	1.0
Window 297	Habitable	8.5%	8.5%	0.0%	1.0
Window 298	Habitable	8.1%	8.1%	0.0%	1.0
Window 299	Habitable	2.8%	2.1%	0.7%	0.75
Window 300	Habitable	30.2%	24.3%	5.9%	0.8
Window 301	Habitable	3.7%	3.1%	0.6%	0.84
Window 302	Habitable	32.1%	27.0%	5.1%	0.84
Window 303	Habitable	4.3%	3.8%	0.5%	0.88
Window 304	Habitable	33.4%	29.5%	3.9%	0.88
Window 305	Habitable	4.6%	4.3%	0.3%	0.93
Window 306	Habitable	34.7%	32.4%	2.3%	0.93
Window 307	Habitable	5.0%	4.9%	0.1%	0.98
Window 308	Habitable	36.2%	35.4%	0.8%	0.98
Window 309	Habitable	5.5%	5.5%	0.0%	1.0
Window 310	Habitable	37.4%	37.4%	0.0%	1.0
Window 311	Habitable	5.9%	5.9%	0.0%	1.0
Window 312	Habitable	38.5%	38.5%	0.0%	1.0
Window 313	Non Habitable	31.3%	26.3%	5.0%	0.84
Window 314	Non Habitable	32.8%	28.8%	4.0%	0.88
Window 315	Non Habitable	34.1%	31.3%	2.8%	0.92
Window 316	Non Habitable	35.6%	34.1%	1.5%	0.96
Window 317	Non Habitable	36.8%	36.6%	0.2%	0.99
Window 318	Non Habitable	37.9%	37.9%	0.0%	1.0
Window 319	Non Habitable	8.5%	6.1%	2.4%	0.72
Window 320	Non Habitable	7.3%	4.0%	3.3%	0.55
Window 321	Non Habitable	11.5%	7.1%	4.4%	0.62
Window 322	Habitable	30.3%	25.5%	4.8%	0.84
Window 323	Habitable	4.7%	4.7%	0.0%	1.0
Window 324	Habitable	32.2%	28.1%	4.1%	0.87
Window 325	Habitable	4.4%	4.4%	0.0%	1.0

**Appendix 3.2 - Vertical Sky Component**  
**Regents Park Estate London NW1 4BX**

Reference	Use Class	Vertical Sky Component			
		Before	After	Loss	Ratio
Window 326	Habitable	33.6%	30.6%	3.0%	0.91
Window 327	Habitable	5.1%	5.1%	0.0%	1.0
Window 328	Habitable	34.8%	32.9%	1.9%	0.95
Window 329	Habitable	5.4%	5.4%	0.0%	1.0
Window 330	Habitable	36.2%	35.6%	0.6%	0.98
Window 331	Habitable	37.4%	37.4%	0.0%	1.0
Window 332	Habitable	5.8%	5.8%	0.0%	1.0
Window 333	Habitable	38.4%	38.4%	0.0%	1.0
Window 334	Habitable	5.3%	5.3%	0.0%	1.0
Window 335	Non Habitable	3.9%	2.0%	1.9%	0.51
Window 336	Non Habitable	4.2%	2.2%	2.0%	0.52
Window 337	Habitable	6.3%	6.2%	0.1%	0.98
Window 338	Habitable	6.6%	3.4%	3.2%	0.52
Window 339	Habitable	5.6%	5.4%	0.2%	0.96
Window 340	Habitable	6.0%	3.2%	2.8%	0.53
Window 341	Habitable	6.7%	6.6%	0.1%	0.99
Window 342	Habitable	7.2%	5.0%	2.2%	0.69
Window 343	Habitable	7.6%	7.6%	0.0%	1.0
Window 344	Habitable	8.2%	6.9%	1.3%	0.84
Window 345	Habitable	30.6%	30.1%	0.5%	0.98
Window 346	Habitable	8.8%	8.8%	0.0%	1.0
Window 347	Habitable	9.4%	9.4%	0.0%	1.0
Window 348	Habitable	8.1%	8.1%	0.0%	1.0
Window 349	Habitable	8.9%	8.9%	0.0%	1.0
Window 350	Non Habitable	3.6%	1.9%	1.7%	0.53
Window 351	Habitable	3.8%	1.6%	2.2%	0.42
Window 352	Habitable	30.3%	26.7%	3.6%	0.88
Window 353	Habitable	3.4%	1.6%	1.8%	0.47
Window 354	Habitable	32.4%	29.5%	2.9%	0.91
Window 355	Habitable	4.2%	2.9%	1.3%	0.69
Window 356	Habitable	33.8%	31.6%	2.2%	0.93
Window 357	Habitable	4.8%	4.0%	0.8%	0.83
Window 358	Habitable	35.1%	33.8%	1.3%	0.96

**Appendix 3.2 - Vertical Sky Component**  
**Regents Park Estate London NW1 4BX**

Reference	Use Class	Vertical Sky Component			
		Before	After	Loss	Ratio
Window 359	Habitable	36.3%	35.8%	0.5%	0.99
Window 360	Habitable	5.6%	5.6%	0.0%	1.0
Window 361	Habitable	37.5%	37.5%	0.0%	1.0
Window 362	Habitable	5.3%	5.3%	0.0%	1.0
Window 363	Habitable	38.4%	38.4%	0.0%	1.0
Window 364	Habitable	4.2%	3.9%	0.3%	0.93
Window 365	Habitable	5.2%	3.8%	1.4%	0.73
Window 366	Habitable	3.3%	2.1%	1.2%	0.64
Window 367	Habitable	6.6%	6.1%	0.5%	0.92
Window 368	Habitable	7.9%	6.0%	1.9%	0.76
Window 369	Habitable	4.8%	3.2%	1.6%	0.67
Window 370	Habitable	8.2%	7.7%	0.5%	0.94
Window 371	Habitable	9.7%	7.7%	2.0%	0.79
Window 372	Habitable	5.9%	4.1%	1.8%	0.69
Window 373	Habitable	9.2%	8.9%	0.3%	0.97
Window 374	Habitable	11.0%	9.5%	1.5%	0.86
Window 375	Habitable	6.8%	5.5%	1.3%	0.81
Window 376	Habitable	9.9%	9.8%	0.1%	0.99
Window 377	Habitable	11.9%	11.1%	0.8%	0.93
Window 378	Habitable	7.5%	6.8%	0.7%	0.91
Window 379	Habitable	10.9%	10.9%	0.0%	1.0
Window 380	Habitable	13.2%	12.9%	0.3%	0.98
Window 381	Habitable	8.5%	8.3%	0.2%	0.98
Window 382	Habitable	11.8%	11.8%	0.0%	1.0
Window 383	Habitable	14.2%	14.2%	0.0%	1.0
Window 384	Habitable	9.4%	9.4%	0.0%	1.0
Window 385	Habitable	10.7%	10.7%	0.0%	1.0
Window 386	Habitable	13.6%	13.6%	0.0%	1.0
Window 387	Habitable	13.7%	13.7%	0.0%	1.0
Window 388	Habitable	10.9%	10.9%	0.0%	1.0
Window 389 (Secondary)	Habitable	5.1%	3.0%	2.1%	0.59
Window 390	Habitable	26.7%	24.9%	1.8%	0.93
Window 391 (Secondary)	Habitable	5.9%	4.0%	1.9%	0.68

**Appendix 3.2 - Vertical Sky Component**  
**Regents Park Estate London NW1 4BX**

Reference	Use Class	Vertical Sky Component			
		Before	After	Loss	Ratio
Window 392	Habitable	30.3%	28.4%	1.9%	0.94
Window 393 (Secondary)	Habitable	6.5%	4.9%	1.6%	0.75
Window 394	Habitable	32.6%	30.9%	1.7%	0.95
Window 395 (Secondary)	Habitable	7.0%	5.9%	1.1%	0.84
Window 396	Habitable	34.1%	33.0%	1.1%	0.97
Window 397 (Secondary)	Habitable	7.4%	6.8%	0.6%	0.92
Window 398	Habitable	35.2%	34.6%	0.6%	0.98
Window 399 (Secondary)	Habitable	8.0%	7.8%	0.2%	0.98
Window 400	Habitable	36.4%	36.2%	0.2%	0.99
Window 401 (Secondary)	Habitable	8.4%	8.4%	0.0%	1.0
Window 402	Habitable	37.5%	37.5%	0.0%	1.0
Window 403 (Secondary)	Habitable	8.8%	8.8%	0.0%	1.0
Window 404	Habitable	38.5%	38.5%	0.0%	1.0

**Appendix 3.2 - Sunlight to Windows**  
**Regents Park Estate London NW1 4BX**

Reference	Use Class	Sunlight to Windows							
		Total Sunlight Hours				Winter Sunlight Hours			
		Before	After	Loss	Ratio	Before	After	Loss	Ratio
<u>Mackworth building</u>									
Window 29	Living Room	37%	37%	0%	1.0	13%	13%	0%	1.0
Window 30	Living Room	77%	75%	2%	0.97	24%	22%	2%	0.92
Window 31	Living Room	81%	81%	0%	1.0	25%	25%	0%	1.0
Window 32	Living Room	42%	42%	0%	1.0	13%	13%	0%	1.0
Window 33	Living Room	83%	83%	0%	1.0	27%	27%	0%	1.0
Window 34	Living Room	86%	85%	1%	0.99	29%	28%	1%	0.97
Window 35	Living Room	49%	49%	0%	1.0	15%	15%	0%	1.0
Window 36	Living Room	86%	85%	1%	0.99	30%	29%	1%	0.97
Window 37	Living Room	87%	87%	0%	1.0	30%	30%	0%	1.0
Window 56	Habitable	28%	26%	2%	0.93	11%	9%	2%	0.82
Window 57	Habitable	28%	27%	1%	0.96	11%	10%	1%	0.91
Window 58	Habitable	30%	30%	0%	1.0	13%	13%	0%	1.0
Window 59	Habitable	30%	30%	0%	1.0	13%	13%	0%	1.0
Window 60	Habitable	30%	30%	0%	1.0	13%	13%	0%	1.0
Window 61	Habitable	32%	32%	0%	1.0	14%	14%	0%	1.0
Window 62	Bedroom	58%	56%	2%	0.97	19%	17%	2%	0.89
Window 63	Bedroom	62%	62%	0%	1.0	22%	22%	0%	1.0
Window 64	Bedroom	64%	64%	0%	1.0	24%	24%	0%	1.0
Window 65	Bedroom	60%	58%	2%	0.97	19%	17%	2%	0.89
Window 66	Bedroom	63%	62%	1%	0.98	20%	19%	1%	0.95
Window 67	Bedroom	66%	66%	0%	1.0	23%	23%	0%	1.0
Window 68	Bedroom	72%	72%	0%	1.0	25%	25%	0%	1.0
Window 69	Living Room	65%	63%	2%	0.97	22%	20%	2%	0.91
Window 70	Living Room	67%	66%	1%	0.99	22%	21%	1%	0.95
Window 71	Living Room	65%	63%	2%	0.97	22%	20%	2%	0.91
Window 72	Living Room	68%	67%	1%	0.99	22%	21%	1%	0.95
Window 73	Living Room	67%	66%	1%	0.99	23%	22%	1%	0.96
Window 74	Living Room	71%	69%	2%	0.97	24%	22%	2%	0.92
Window 75	Living Room	71%	71%	0%	1.0	26%	26%	0%	1.0
Window 76	Living Room	74%	74%	0%	1.0	26%	26%	0%	1.0
Window 77	Living Room	71%	71%	0%	1.0	26%	26%	0%	1.0
Window 78	Living Room	75%	75%	0%	1.0	26%	26%	0%	1.0
Window 79	Living Room	73%	73%	0%	1.0	27%	27%	0%	1.0

**Appendix 3.2 - Sunlight to Windows**  
**Regents Park Estate London NW1 4BX**

Reference	Use Class	Sunlight to Windows							
		Total Sunlight Hours				Winter Sunlight Hours			
		Before	After	Loss	Ratio	Before	After	Loss	Ratio
Window 80	Living Room	77%	77%	0%	1.0	27%	27%	0%	1.0
Window 81	Living Room	79%	79%	0%	1.0	28%	28%	0%	1.0
Window 82	Living Room	81%	81%	0%	1.0	28%	28%	0%	1.0
Window 83	Bedroom	68%	64%	4%	0.94	21%	17%	4%	0.81
Window 84	Bedroom	70%	68%	2%	0.97	23%	21%	2%	0.91
Window 85	Bedroom	72%	70%	2%	0.97	24%	22%	2%	0.92
Window 86	Bedroom	75%	75%	0%	1.0	26%	26%	0%	1.0
Window 87	Bedroom	78%	78%	0%	1.0	26%	26%	0%	1.0
Window 88	Bedroom	79%	79%	0%	1.0	27%	27%	0%	1.0
Window 89	Bedroom	84%	84%	0%	1.0	28%	28%	0%	1.0
Window 90	Living Room	68%	64%	4%	0.94	21%	17%	4%	0.81
Window 91	Living Room	67%	63%	4%	0.94	19%	15%	4%	0.79
Window 92	Living Room	70%	67%	3%	0.96	22%	19%	3%	0.86
Window 93	Living Room	71%	68%	3%	0.96	22%	19%	3%	0.86
Window 94	Living Room	71%	69%	2%	0.97	23%	21%	2%	0.91
Window 95	Living Room	72%	70%	2%	0.97	23%	21%	2%	0.91
Window 96	Living Room	74%	72%	2%	0.97	25%	23%	2%	0.92
Window 97	Living Room	76%	75%	1%	0.99	25%	24%	1%	0.96
Window 98	Living Room	78%	78%	0%	1.0	26%	26%	0%	1.0
Window 99	Living Room	79%	79%	0%	1.0	26%	26%	0%	1.0
Window 100	Living Room	80%	80%	0%	1.0	27%	27%	0%	1.0
Window 101	Living Room	81%	81%	0%	1.0	27%	27%	0%	1.0
Window 102	Living Room	84%	84%	0%	1.0	28%	28%	0%	1.0
Window 103	Living Room	84%	84%	0%	1.0	28%	28%	0%	1.0
Window 104	Bedroom	71%	65%	6%	0.92	21%	15%	6%	0.71
Window 105	Bedroom	72%	69%	3%	0.96	22%	19%	3%	0.86
Window 106	Bedroom	77%	75%	2%	0.97	26%	24%	2%	0.92
Window 107	Bedroom	77%	76%	1%	0.99	25%	24%	1%	0.96
Window 108	Bedroom	81%	81%	0%	1.0	27%	27%	0%	1.0
Window 109	Bedroom	83%	83%	0%	1.0	27%	27%	0%	1.0
Window 110	Bedroom	86%	86%	0%	1.0	29%	29%	0%	1.0
Window 111	Living Room	69%	65%	4%	0.94	20%	16%	4%	0.8
Window 112	Living Room	67%	63%	4%	0.94	19%	15%	4%	0.79



**Appendix 3.2 - Sunlight to Windows**  
**Regents Park Estate London NW1 4BX**

Reference	Use Class	Sunlight to Windows							
		Total Sunlight Hours				Winter Sunlight Hours			
		Before	After	Loss	Ratio	Before	After	Loss	Ratio
Window 113	Living Room	75%	72%	3%	0.96	23%	20%	3%	0.87
Window 114	Living Room	75%	72%	3%	0.96	23%	20%	3%	0.87
Window 115	Living Room	78%	77%	1%	0.99	26%	25%	1%	0.96
Window 116	Living Room	79%	78%	1%	0.99	26%	25%	1%	0.96
Window 117	Living Room	81%	80%	1%	0.99	27%	26%	1%	0.96
Window 118	Living Room	81%	80%	1%	0.99	27%	26%	1%	0.96
Window 119	Living Room	84%	84%	0%	1.0	28%	28%	0%	1.0
Window 120	Living Room	83%	83%	0%	1.0	27%	27%	0%	1.0
Window 121	Living Room	85%	85%	0%	1.0	28%	28%	0%	1.0
Window 122	Living Room	85%	85%	0%	1.0	28%	28%	0%	1.0
Window 123	Living Room	87%	87%	0%	1.0	30%	30%	0%	1.0
Window 124	Living Room	87%	87%	0%	1.0	30%	30%	0%	1.0
Window 125	Bedroom	69%	66%	3%	0.96	20%	17%	3%	0.85
Window 126	Bedroom	74%	73%	1%	0.99	22%	21%	1%	0.95
Window 127	Bedroom	79%	78%	1%	0.99	25%	24%	1%	0.96
Window 128	Bedroom	81%	81%	0%	1.0	27%	27%	0%	1.0
Window 129	Bedroom	83%	83%	0%	1.0	27%	27%	0%	1.0
Window 130	Bedroom	85%	85%	0%	1.0	28%	28%	0%	1.0
Window 131	Bedroom	87%	87%	0%	1.0	30%	30%	0%	1.0
Window 132	Bedroom	70%	68%	2%	0.97	20%	18%	2%	0.9
<u>1 to 20 Stanhope Street</u>									
Window 248	Habitable	20%	20%	0%	1.0	9%	9%	0%	1.0
Window 249	Habitable	18%	18%	0%	1.0	12%	12%	0%	1.0
Window 250	Habitable	23%	23%	0%	1.0	9%	9%	0%	1.0
Window 251	Habitable	19%	19%	0%	1.0	12%	12%	0%	1.0
Window 252	Habitable	23%	23%	0%	1.0	9%	9%	0%	1.0
Window 253	Habitable	19%	19%	0%	1.0	12%	12%	0%	1.0
Window 254	Habitable	25%	25%	0%	1.0	10%	10%	0%	1.0
Window 255	Habitable	20%	20%	0%	1.0	13%	13%	0%	1.0
Window 256	Habitable	45%	45%	0%	1.0	13%	13%	0%	1.0
Window 257	Habitable	44%	44%	0%	1.0	13%	13%	0%	1.0
Window 258	Habitable	39%	39%	0%	1.0	13%	13%	0%	1.0
Window 259	Habitable	41%	41%	0%	1.0	14%	14%	0%	1.0

**Appendix 3.2 - Sunlight to Windows**  
**Regents Park Estate London NW1 4BX**

Reference	Use Class	Sunlight to Windows							
		Total Sunlight Hours				Winter Sunlight Hours			
		Before	After	Loss	Ratio	Before	After	Loss	Ratio
Window 260	Habitable	41%	41%	0%	1.0	14%	14%	0%	1.0
Window 261	Habitable	41%	41%	0%	1.0	14%	14%	0%	1.0
Window 262	Habitable	44%	44%	0%	1.0	15%	15%	0%	1.0
Window 263	Habitable	41%	41%	0%	1.0	13%	13%	0%	1.0
Window 264	Habitable	42%	42%	0%	1.0	14%	14%	0%	1.0
Window 265	Habitable	42%	42%	0%	1.0	14%	14%	0%	1.0
Window 266	Habitable	42%	42%	0%	1.0	14%	14%	0%	1.0
Window 267	Habitable	44%	44%	0%	1.0	15%	15%	0%	1.0
<u>1 to 16 Ennerdale House</u>									
Window 270	Habitable	1%	1%	0%	1.0	0%	0%	0%	1.0
Window 272	Habitable	1%	1%	0%	1.0	0%	0%	0%	1.0
Window 274	Habitable	1%	1%	0%	1.0	0%	0%	0%	1.0
Window 276	Habitable	1%	1%	0%	1.0	0%	0%	0%	1.0
Window 278	Habitable	1%	1%	0%	1.0	0%	0%	0%	1.0
Window 280	Habitable	1%	1%	0%	1.0	0%	0%	0%	1.0
Window 282	Habitable	1%	1%	0%	1.0	0%	0%	0%	1.0
Window 323	Habitable	1%	1%	0%	1.0	0%	0%	0%	1.0
Window 325	Habitable	1%	1%	0%	1.0	0%	0%	0%	1.0
Window 327	Habitable	1%	1%	0%	1.0	0%	0%	0%	1.0
Window 329	Habitable	1%	1%	0%	1.0	0%	0%	0%	1.0
Window 332	Habitable	1%	1%	0%	1.0	0%	0%	0%	1.0
Window 334	Habitable	1%	1%	0%	1.0	0%	0%	0%	1.0

**Appendix 3.2 - Overshadowing to Gardens and Open Spaces  
Regents Park Estate London NW1 4BX**

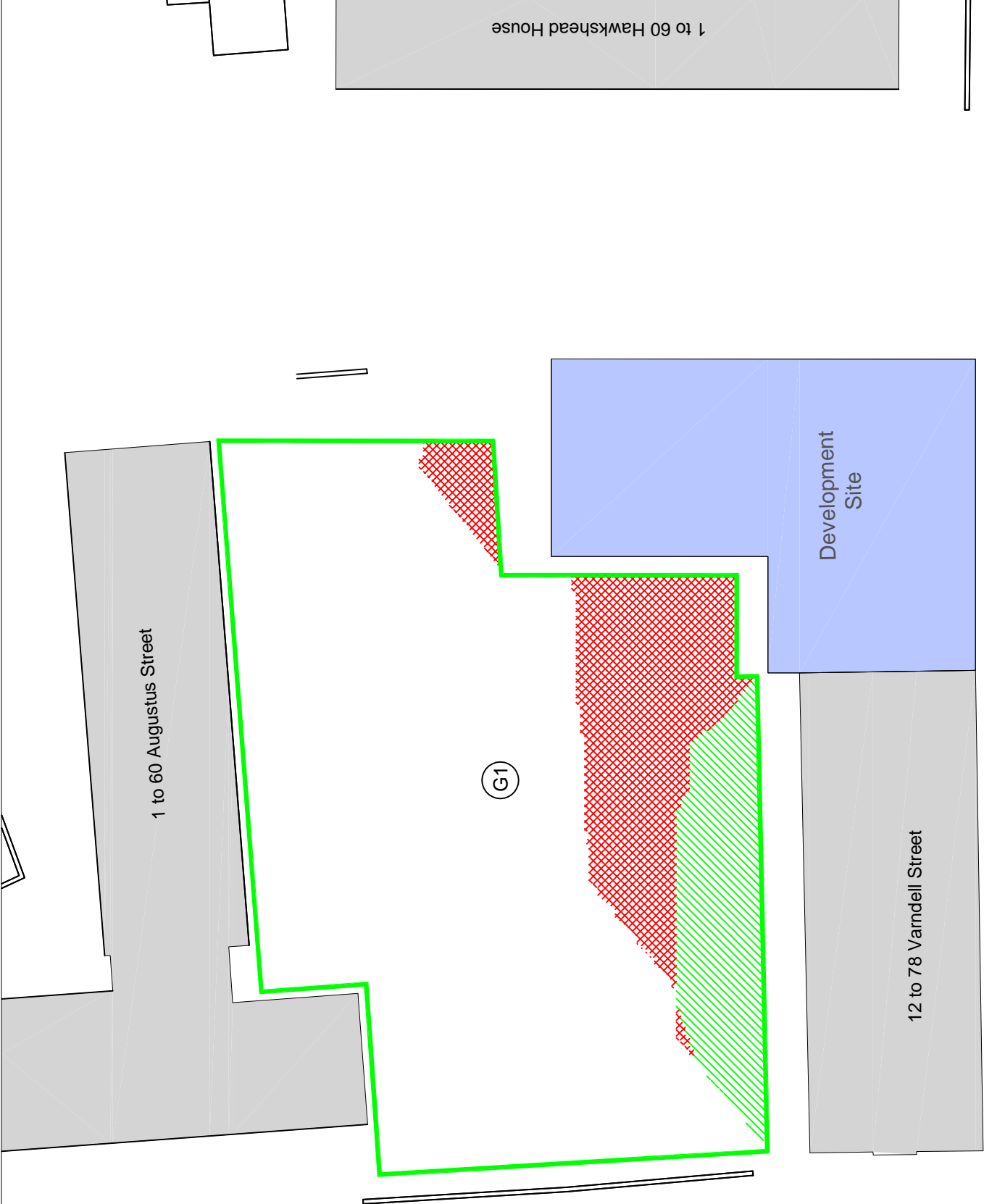
Reference	Total Area	Area receiving at least two hours of sunlight on 21st March			
		Before	After	Loss	Ratio
<u>Amenity Garden</u>					
Garden 1	1037.88 m2	936.12 m2 90%	771.71 m2 74%	164.41 m2 16%	0.82

---

### **APPENDIX 3.3**

#### **OVERSHADOWING TO GARDENS AND OPEN SPACES**

# Appendix 3.3 - Overshadowing to Gardens and Open Spaces



- Key**
-  Receives under two hours sunlight on 21st March before and after the development.
  -  Receives under two hours sunlight on 21st March before the development; but will receive at least two hours sunlight on 21st March after the development (light improved).
  -  Receives at least two hours sunlight on 21st March before the development; but will receive under two hours sunlight after the development (light loss).
  -  Receives at least two hours sunlight on 21st March before and after the development.

**Notes:**

1. Contours derived in accordance with BRE Guide : Site Layout Planning for Daylight and Sunlight

1 to 60 Hawkhead House

Project Name	Regents Park Estate London NW1 4BX	
Drawing Title	Appendix 3.3 - Neighbouring Windows	
Scale	Do not scale	
Drawing No.	1 of 1	Rev. -
Rev.	0	0
Date	Date of revision	



**RIGHT OF LIGHT CONSULTING**  
Chartered Surveyors

Burley House  
15 - 17 High Street  
Rayleigh  
Essex SS6 7EW  
Tel. 0800 197 4836

enquiries@right-of-light.co.uk  
www.right-of-light-consulting.com

---

## **APPENDIX 3.4**

### ALTERNATIVE DAYLIGHT AND SUNLIGHT RESULTS

**Appendix 3.4 - Alternative Vertical Sky Component  
Regents Park Estate, London NW1 4BX**

Reference	Use Class	Vertical Sky Component			
		Before	After	Loss	Ratio
<u>1 to 60 Hawkshead House</u>					
Window 162	Habitable	28.4%	23.3%	5.1%	0.82
Window 165	Habitable	29.9%	25.6%	4.3%	0.86
Window 178	Habitable	28.6%	22.7%	5.9%	0.79
Window 218	Habitable	30.3%	23.9%	6.4%	0.79
Window 228	Habitable	28.7%	22.1%	6.6%	0.77
Window 230	Habitable	31.8%	26.4%	5.4%	0.83
<u>1 to 16 Ennerdale House</u>					
Window 285	Habitable	30.6%	25.5%	5.1%	0.83
Window 286	Habitable	30.7%	25.4%	5.3%	0.83
Window 287	Habitable	32.3%	27.9%	4.4%	0.86
Window 288	Habitable	32.3%	27.9%	4.4%	0.86
Window 289	Habitable	33.6%	30.4%	3.2%	0.9
Window 290	Habitable	33.7%	30.4%	3.3%	0.9
Window 291	Habitable	35.0%	33.2%	1.8%	0.95
Window 292	Habitable	35.0%	33.1%	1.9%	0.95
Window 299	Habitable	31.0%	30.3%	0.7%	0.98
Window 338	Habitable	30.7%	26.9%	3.8%	0.88
Window 340	Habitable	32.5%	29.5%	3.0%	0.91
Window 342	Habitable	33.8%	31.6%	2.2%	0.93
Window 351	Habitable	32.7%	30.5%	2.2%	0.93
Window 353	Habitable	34.1%	32.3%	1.8%	0.95
Window 355	Habitable	35.3%	34.0%	1.3%	0.96
Window 365	Habitable	27.8%	25.1%	2.7%	0.9
Window 366	Habitable	27.7%	25.4%	2.3%	0.92
Window 368	Habitable	30.6%	28.2%	2.4%	0.92
Window 369	Habitable	30.7%	28.5%	2.2%	0.93
Window 371	Habitable	32.7%	30.7%	2.0%	0.94
Window 372	Habitable	32.8%	30.9%	1.9%	0.94

---

## **APPENDIX 4**

### NEWLANDS PLOT



---

**APPENDIX 4.1**

WINDOW & GARDEN KEY