

Pebbles &



Privet



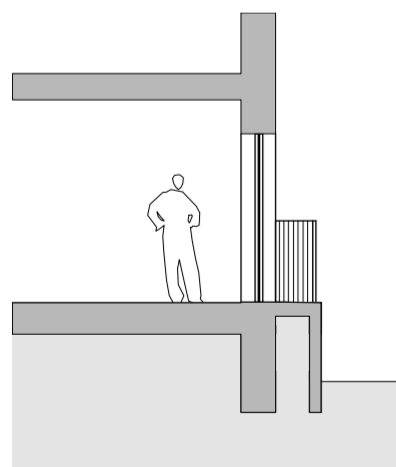
Granite setts



Yellow rose

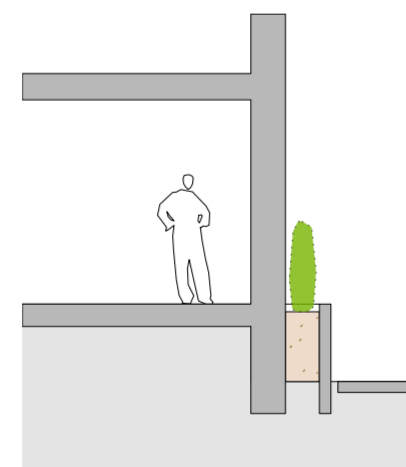


Clematis Bill Mac Kenzie



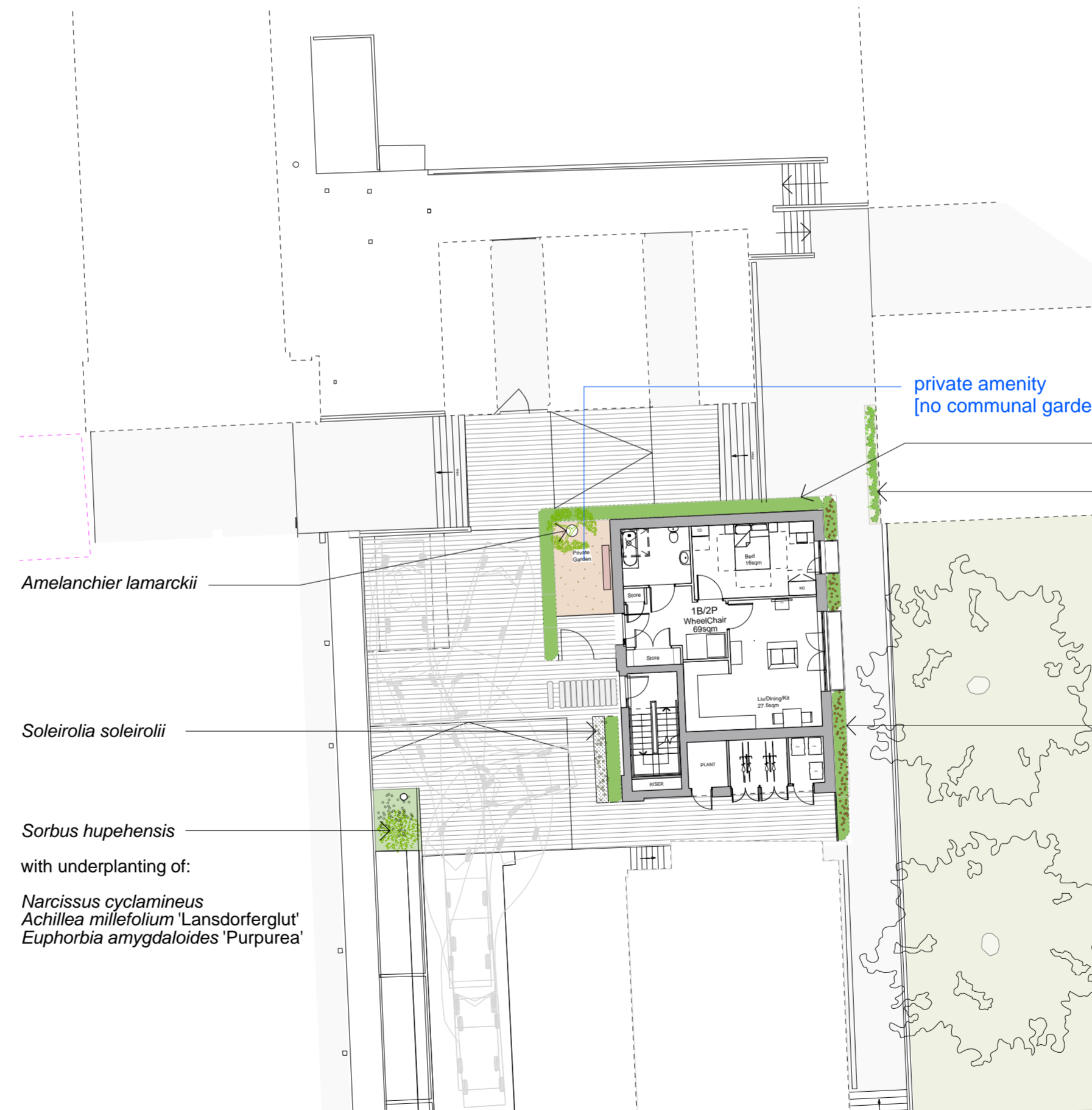
Section through the balcony on the East façade

1:100



Section through the planters on the East façade

1:100



Amelanchier lamarckii

Soleirolia soleirolii

Sorbus hupehensis

with underplanting of:

Narcissus cyclamineus
Achillea millefolium 'Lansdorferglut'
Euphorbia amygdaloides 'Purpurea'

private amenity
[no communal gardens]

Ligustrum ovalifolium hedge

Rosa 'Golden Future'
Rosa banksiae 'Lutea'
Clematis tangutica 'Bill MacKenzie'

Wildlife Hedge:

Corylus avellana
Crataegus monogyna
Rosa arvensis

Plan

1:200

KEY

- New special tree on corners
- New tree
- Underplanting
- Flowering/fruitley hedgerow
- Evergreen hedges
- Climbers
- Breedon gravel
- Pebbles with mosses
- Granite setts 200x100mm
- Reused granite kerbs 300mm wide
- Highway boundaries

DRAFT

East
Architecture landscape
urban design

Unit 8
49-59 Old Street
London EC1V 9HX
T 020 7490 3190
E mail@east.uk.com

www.east.uk.com

PROJECT

Regent's Park Estate

CLIENT

LB Camden

DRAWING STATUS

Stage 3

DATE

2nd April 2015

SCALE

varies

SIZE

A3

REV

-

DRAWING TITLE

Proposed site plan and
sections
Site 10 / St. Bedes
Mews

DRAWING NR

114 RPE S10 100