



Planters:

Akebia quinata
Pulmonaria officinalis
Geranium phaeum
Adiantum aleuticum
Gaillardia nivalis

Magnolia 'Sayonara'

Grasses and perennials:

Deschampsia cespitosa
Allium hollandicum 'Purple Sensation'
Echinacea purpurea
Verbena bonariensis

Hedging (1.5m height):

Ligustrum ovalifolium

Hedging (0.5m height):

Buxus sempervirens

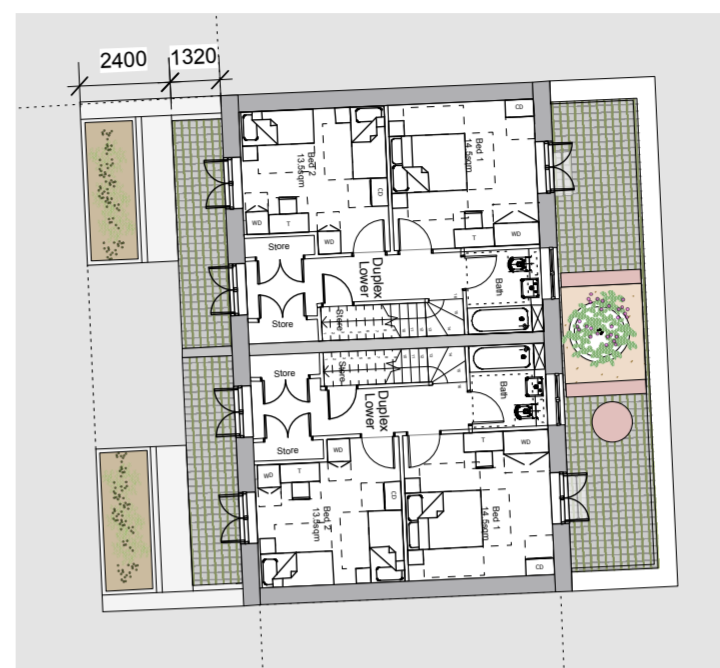
Hamamelis x intermedia 'Jelena'

Climbing plants:

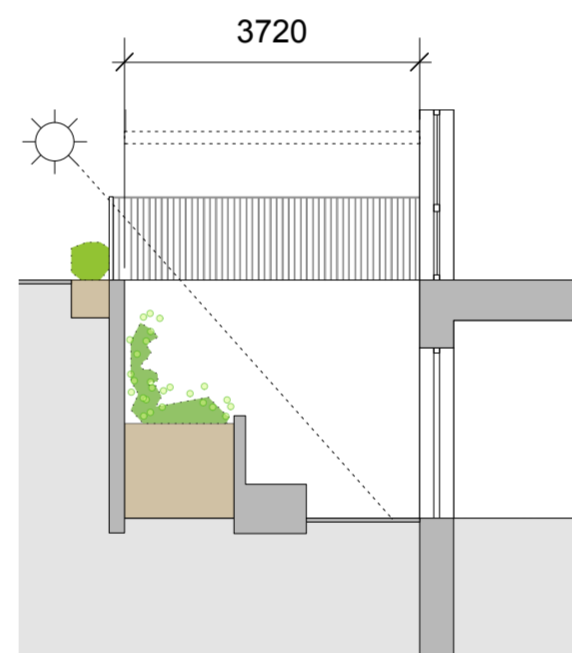
Akebia quinata
Passiflora caerulea
Passiflora x violacea

private amenity
 [no communal gardens]

Ground Floor Plan
 1:200



Basement Plan
 1:200



Section through the basement
 1:100

DRAFT

East
 Architecture landscape
 urban design

Unit 8
 49-59 Old Street
 London EC1V 9HX
 T 020 7490 3190
 E mail@east.uk.com

www.east.uk.com

PROJECT
Regent's Park Estate

CLIENT
 LB Camden

DRAWING STATUS DATE
 Stage 3 2nd April 2015

SCALE SIZE REV
 varies A3 -

DRAWING TITLE DRAWING NR
 Proposed site plan and 114 RPE S6 100
 sections
 Site 6 / Cape of good
 hope

Low hedging (300 - 450mm height):

Buxus sempervirens

Native hedging (600 - 1200mm height):

Rosa arvensis
Corylus avellana
Crataegus monogyna

private amenity



Raised planter:

Euphorbia characias
Geranium 'Patricia'



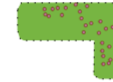





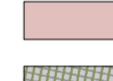
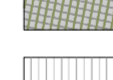
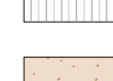

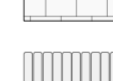



Raised planter:

Magnolia stellata

Underplanted with:
Vinca minor 'Alba'
Galanthus nivalis

Sedum mix

KEY

-  Existing tree retained
-  New special tree on corners
-  Wildlife flowering/fruited hedgerow
-  Evergreen hedges
-  Herbaceous borders
-  Ornamental grasses + perennials
-  Sedum
-  Communal growing spaces (concrete raised planters)
-  Seating
-  Stable-yard cobbles
-  Granite setts 200x100mm
-  Breedon gravel
-  Concrete flags
-  Reused granite kerbs 300mm wide
-  Chasse-roue (reused bollard)
-  Highway boundaries

DRAFT

East
Architecture landscape
urban design
Unit 8
49-59 Old Street
London EC1V 9HX
T 020 7490 3190
E mail@east.uk.com
www.east.uk.com

PROJECT
Regent's Park Estate

CLIENT
LB Camden

DRAWING STATUS DATE
Stage 3 30th March 2015

SCALE SIZE REV
varies A2 -

DRAWING TITLE DRAWING NR
Proposed site plan & section 114 RPE S9 100
Site 9 / Victory pub
Version 01

Proposed plan 1:200