

+2.00

+2.00

+1.50

2.50

-0.42

+1.00

+1.00

+0.50

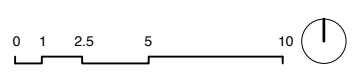
0.00

0.00

- Residents only area
- Herbaceous border planter
- Albizia julibrissin* as multi-stemmed trees (Summer flowering)
- Possible future bridge link to mezzanine level
- Acer griseum* in herbaceous border planter
- Bench
- Cycle lane with larger format granite paving
- Cycle pump
- Liriodendron tulipifera* (Summer flowering)
- Drinking fountain with pebble rill
- Cycle stands
- Existing willow tree
- Residents only area
- Sarcococca confusa* hedge (Winter flowering)
- Shade (perforated metal sheet)
- Granite paving large flags to widened public realm and civic space between new housing blocs opposite future station development
- Foxglove trees (Summer flowering)
- Stainless steel pergola with Wisteria (late spring flowering)
- Grasses and roses
- Patterned tree grilles (mixture of patterns and sizes)
- Japanese cherry trees (Spring flowering)
- Cycle stands
- Swing
- Existing willow tree

- KEY
- Existing tree retained
 - Existing tree removed
 - New tree
 - New fruit tree
 - New special tree on corners
 - Wildlife flowering/fruited hedgerow
 - Evergreen hedges
 - Tree trunks
 - Grass
 - Long grass
 - Flowering meadow
 - Underplanting
 - Herbaceous borders
 - Pebbles with mosses/low ground cover
 - Communal growing spaces (concrete raised planters)
 - Seating
 - Stable-yard cobbles
 - Granite setts 200x100mm
 - Wood chip mulch
 - Breedon gravel
 - Sand
 - Concrete flags
 - Concrete + granite setts
 - Reused granite kerbs 300mm wide
 - In situ concrete
 - Highway boundaries
 - Water tank

East Architecture landscape urban design
 Unit 8
 49-59 Old Street
 London EC1V 9HX
 T 020 7490 3190
 E mail@east.uk.com
 www.east.uk.com



PROJECT
Regent's Park Estate

CLIENT
 LB Camden

DRAWING STATUS
 Planning

DATE
 May 2015

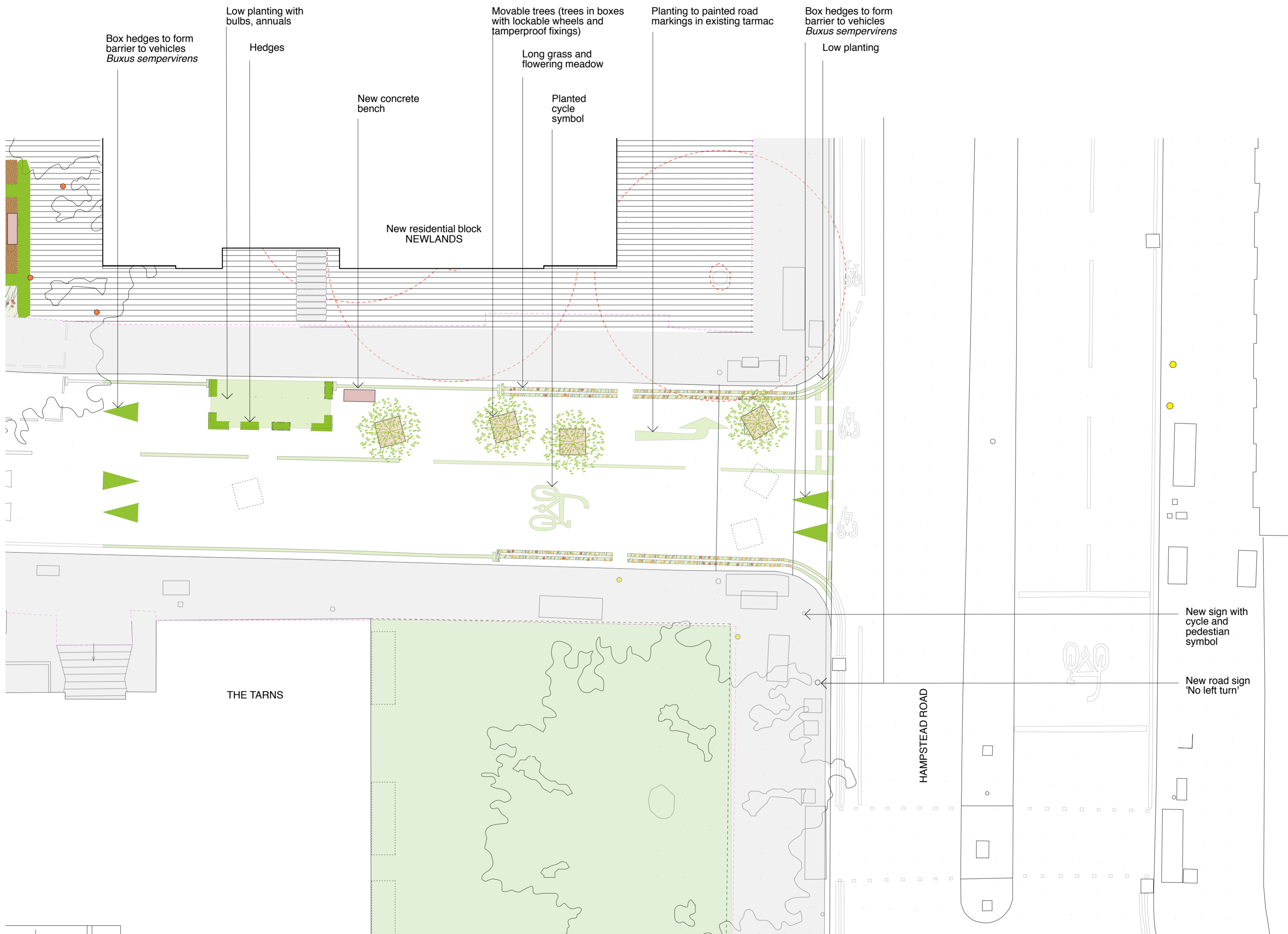
SCALE
 1:200

SIZE
 A2

REV
 -

DRAWING TITLE
 Proposed site plan
 Mitigation site
 The Tarns
 Long term

DRAWING NR
 114 RPE M3 101



East
 Architecture landscape
 urban design
 Unit 8
 49-59 Old Street
 London EC1V 9HX
 T 020 7490 3190
 E mail@east.uk.com
 www.east.uk.com



PROJECT
Regent's Park Estate

CLIENT
 LB Camden

DRAWING STATUS
 Planning

DATE
 May 2015

SCALE
 1:200

SIZE
 A2

REV
 -

DRAWING TITLE
 Proposed site plan
 Mitigation site
 The Tarns
 Short term

DRAWING NR
 114 RPE M3 100