

Access to the fourth floor office is via 3 lifts from the central atrium, all of which will be Part M compliant. An accessible WC/shower is located on each floor. 2 no. stair cores will facilitate escape from the building. Each contains a refuge point.

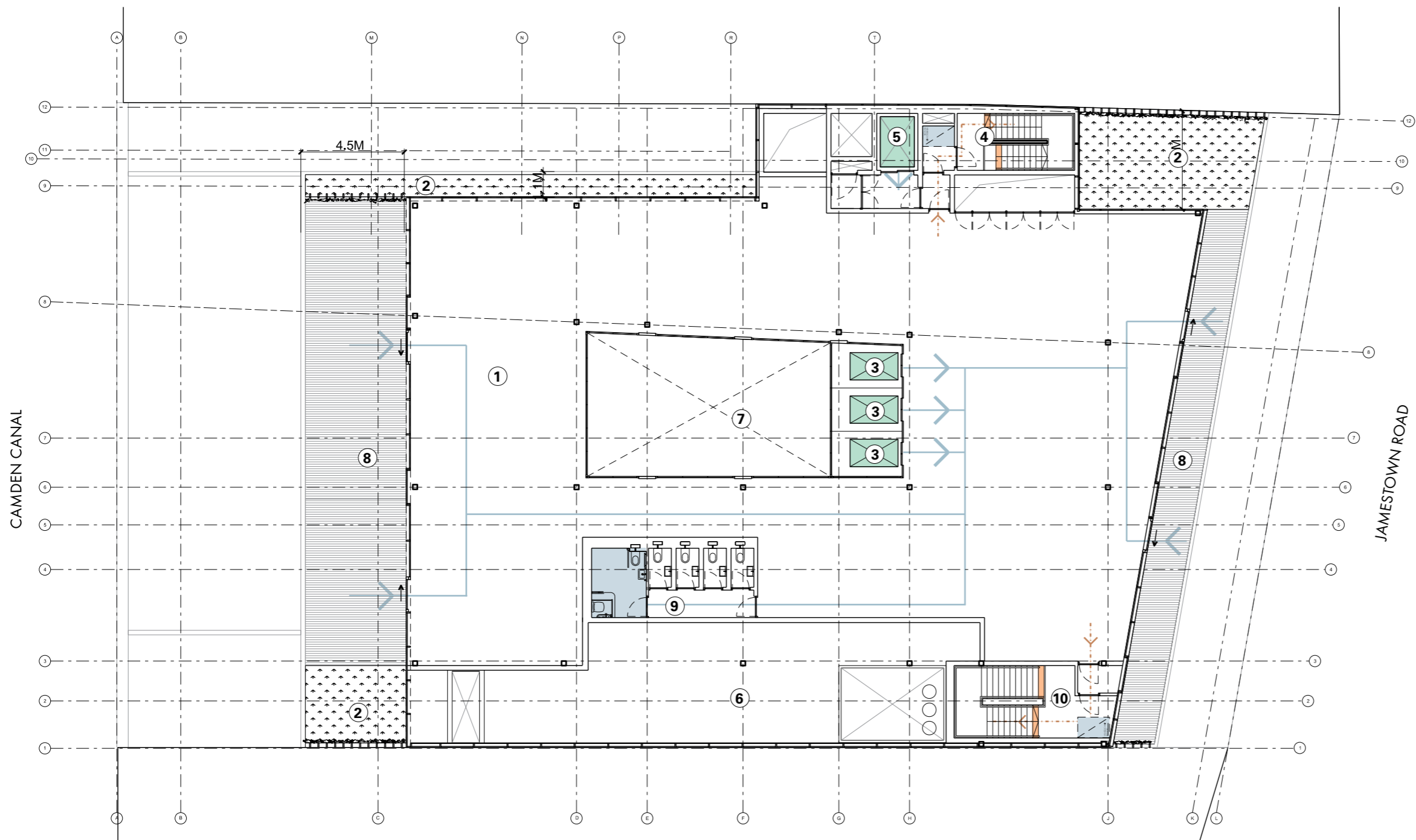
The fourth and fifth floor offices benefit from large external terraces. Access to the terraces is enabled by temporary access ramps.

1. Fourth floor office space
2. Stair C
3. Office lifts to all floors
4. External terrace to fourth floor office
5. Stair A
6. Office lift
7. WCs to office
8. Atrium- open to below
9. Inaccessible terrace

KEY

- Lifts
- Accessible facilities
- Stepped Access
- Level access route
- Office cycle store access
- Fire escape route

Fourth floor plan showing accessible routes and facilities [1:200]



The fourth and fifth floor offices benefit from large external terraces. Level access to the terraces is enabled by temporary access ramps.

Access to the fifth floor office is via 3 lifts from the central atrium, all of which will be Part M compliant. An accessible WC/shower is located on each floor. 2 no. stair cores will facilitate escape from the building. Each contains a refuge point.

- 1. Office Space
- 2. Inaccessible green roof
- 3. Lifts to office
- 4. Stair A
- 5. Office lift
- 6. Plant
- 7. Atrium- open to below
- 8. Roof terrace
- 9. Office WC
- 10. Stair C

KEY

- Lifts
- Accessible facilities
- Stepped Access
- Level access route
- Office cycle store access
- Fire escape route

Fifth floor plan showing accessible routes and facilities [1:200]

## 5.0 BAA Quality Management System



### 5.1 BAA Quality Management System

Revision No.  
003

Revision Date  
15.05.15

Revision Description  
D&A Statement

File Location  
P:\12-001-099\12-007 Jamestown Road\IMAGES\  
DESIGN REPORTS\150310 Revised D&A Statement

Filename  
D&A Statement

Client Name  
L&R (Bewlay House) Limited

Client Contact  
Geoff Springer

Project Co-ordinator  
Nicholas Jewell

Editor  
Janinder Bhatti

## 6.0 Appendices

### 6.1 Existing and Proposed Drawings