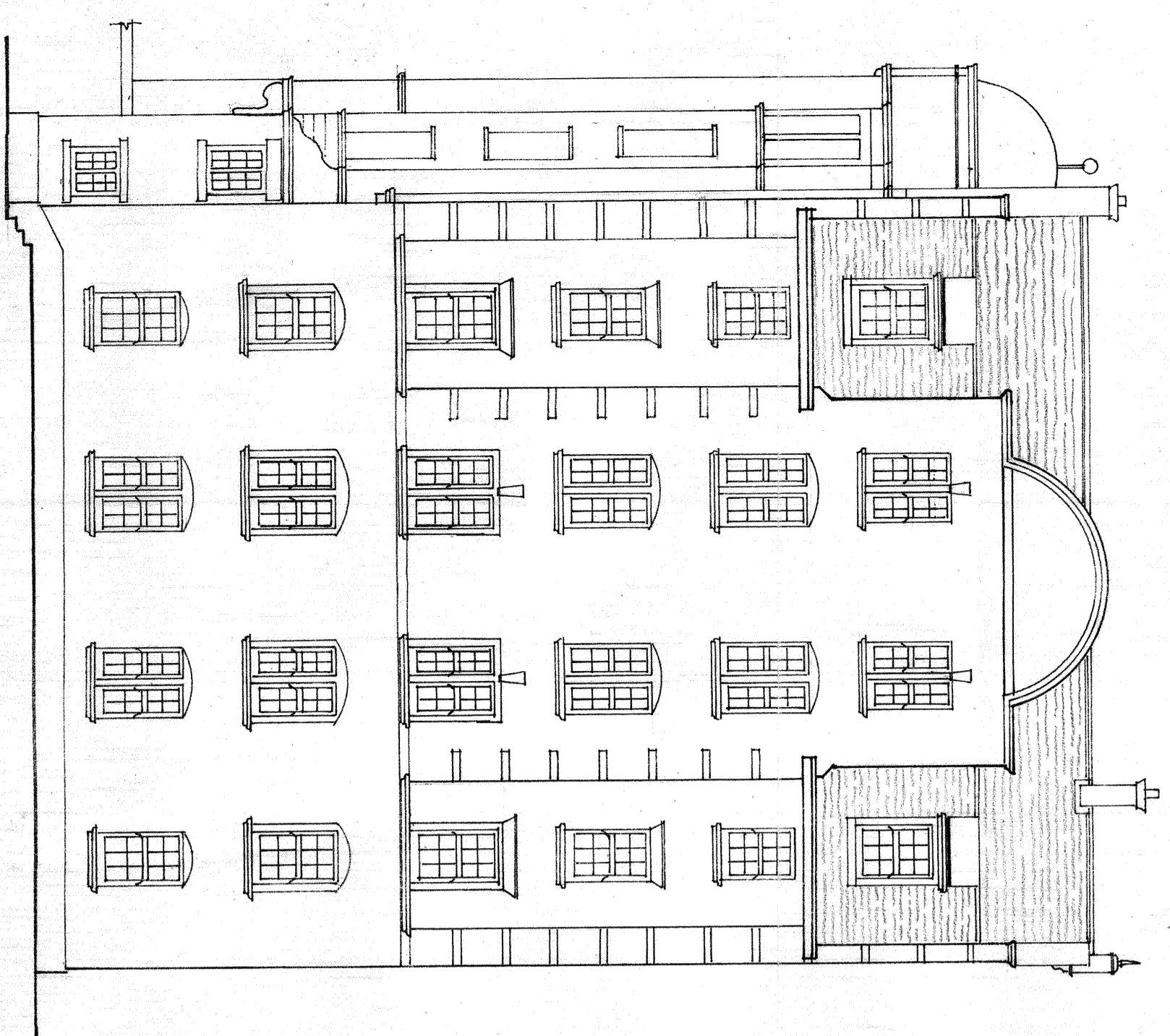
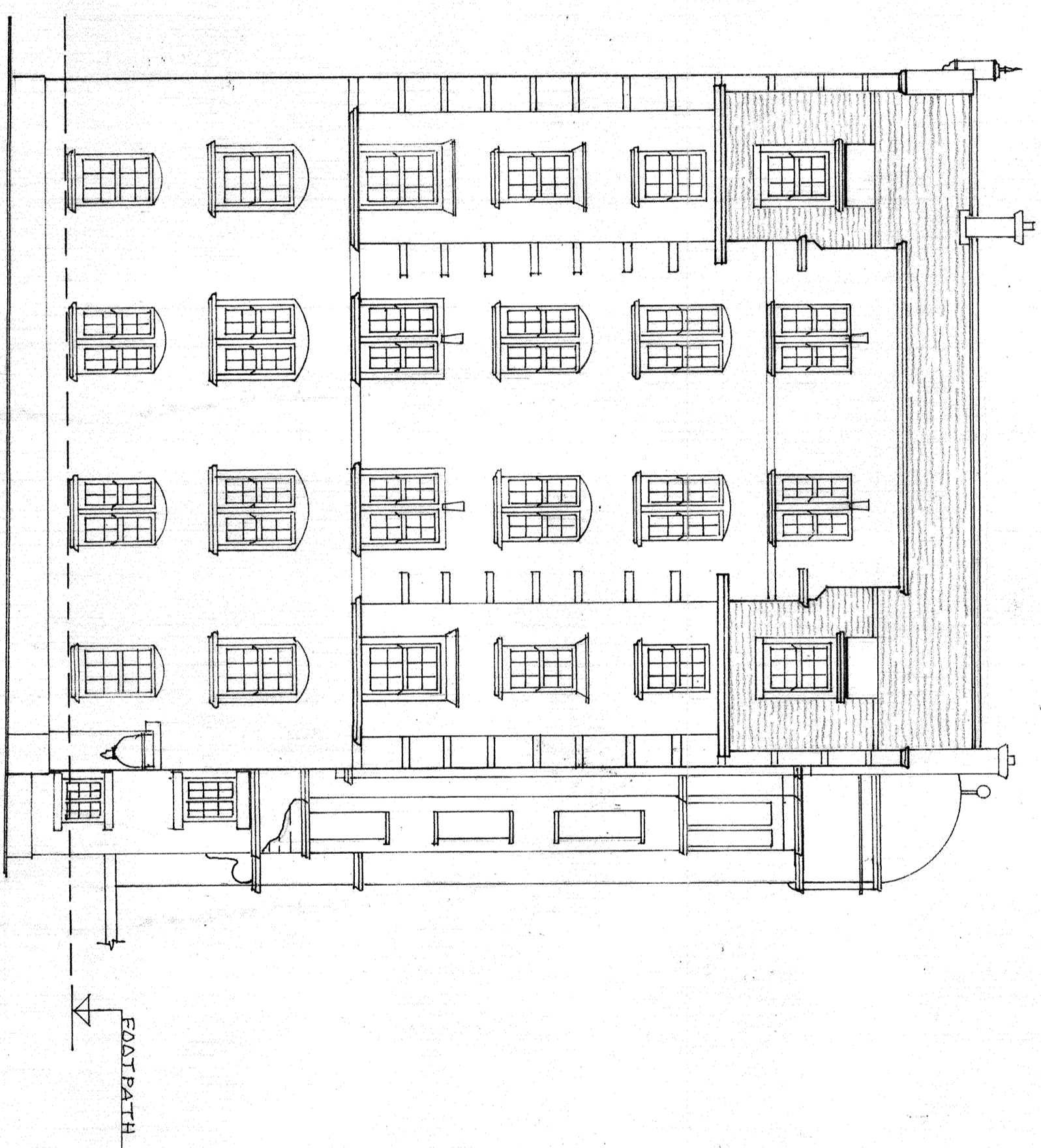


FRONT ELEVATION 'A'

ALL EXISTING ENTRANCE DOORS TO REMAIN.



SIDE ELEVATION 'B'



SIDE ELEVATION 'C'

EASTBATH

EASTBATH

NOTES

1. ALL WINDOWS ARE TO BE REPLACED USING FRAMING MATERIALS AS EXISTING (WITH THE EXCEPTION OF EXISTING REPLACEMENT ALUMINIUM FRAMED WINDOWS - SEE NOTE FOR WINDOWS TYPE/CFG-DWG 04/15/4/22-03)
2. ALL STRUCTURAL OPENINGS TO REMAIN AS EXISTING.
3. ALL FEATURE IRONWORK TO STONE CURS (NOT SHOWN FOR REASONS OF CLARITY) TO REMAIN.
4. PATTERN AND OPENING LIGHT TYPES/CONFIGURATIONS OF REPLACEMENT WINDOWS TO BE AS EXISTING, (SEE ARDEN WINDOWS LTD. GENERIC DRAWINGS REF. AW RIVNARD (VERTICAL SLIDING SASH) & PIVOT 2013 (VERTICAL PIVOT)).
5. TIMBER FRAMED WINDOWS GLAZED CLEAR WITH 28mm THICK DOUBLE GLAZED UNITS, COMPRISING 2 LEAFS 4m TOUCHENED GLASS WITH A 20mm ARGON GAS FILLED CAVITY, WITH LOW'E COATING TO INTERNAL SURFACE OF GLASS.
6. EXISTING STEEL FRAMED WINDOWS REPLACED WITH TIMBER FRAMED, FIXED LIGHT WINDOWS (SEE ARDEN WINDOWS LTD. GENERIC DRAWING REF. WARDICK DIRECT GLAZED) INCORPORATING 28mm THICK INSULATED COMPOSITE PANELS - WHITE TREXPA FACED TO ACCOMMODATE FLUE PIPES.
7. TIMBER FRAMES AND SASHES TO BE TREATED WITH A WATER BASED PRESERVATIVE TREATMENT APPLIED BY IMMERSION COAT, FOLLOWED BY A MINIMUM ONE COAT BASECOAT PRIMER AND TWO FURTHER COATS OF FACTORY APPLIED MICROPOROUS PAINT FINISH - COLOUR - WHITE. DRY PAINT FINISH TO BE BETWEEN 60-100 MICRONS TO A 30% SILK GLOSS LEVEL.
8. STEEL WINDOW FRAMING TO BE HOT-DIPPED GALVANISED, FOLLOWED WITH A POLYESTER POWDER COAT FINISH - COLOUR - WHITE.
9. ANY DISTURBED FINISHES TO BE MADE GOOD TO APPROVED STANDARD.

READ IN CONJUNCTION WITH DRAWING NO. 04/15/4/22-02,03 & 04

REPLACEMENT OF WINDOWS AT
FLATS 1-86 FLAXMAN COURT,
FLAXMAN TERRACE, LONDON
WC1H 9AR
04/15/4/22-01B

DATE	BY	REVISION
03/07/15	PRELIM. ISSUE	R
05/07/15	LISTED BUILDING A	
24/07/15	CONSULT. ISSUE	A
24/07/15	STEEL FRAMED WINDOWS	B