

Before the use commences, full details of any extract ventilating system, air-conditioning and/or any other externally mounted plant/mechanical equipment shall be submitted for approval by the local planning authority including details of acoustic isolation and sound attenuation. The development shall only be carried out in accordance with any scheme approved by the Council. The acoustic isolation shall thereafter be maintained in effective order to the reasonable satisfaction of the Council.

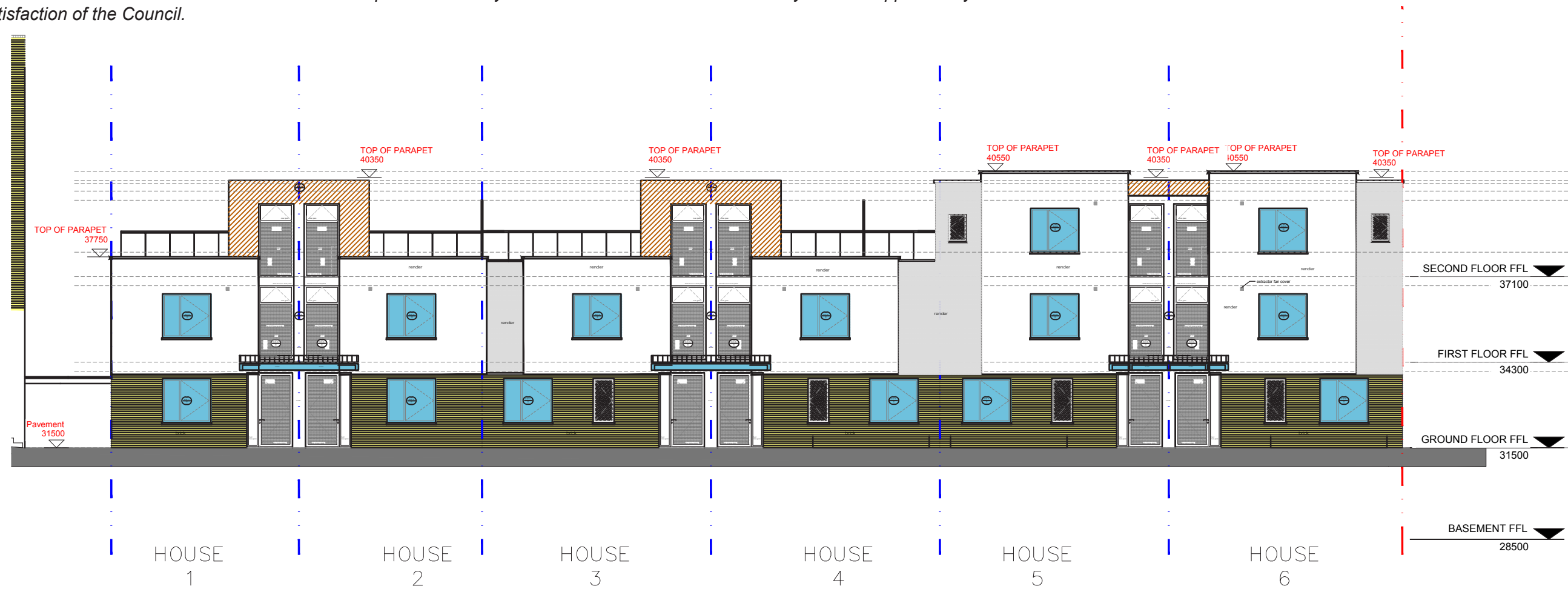


Figure 15: North elevation 1:150 showing externally visible extractor fan fascias



Figure 16: Extractor fan white cover

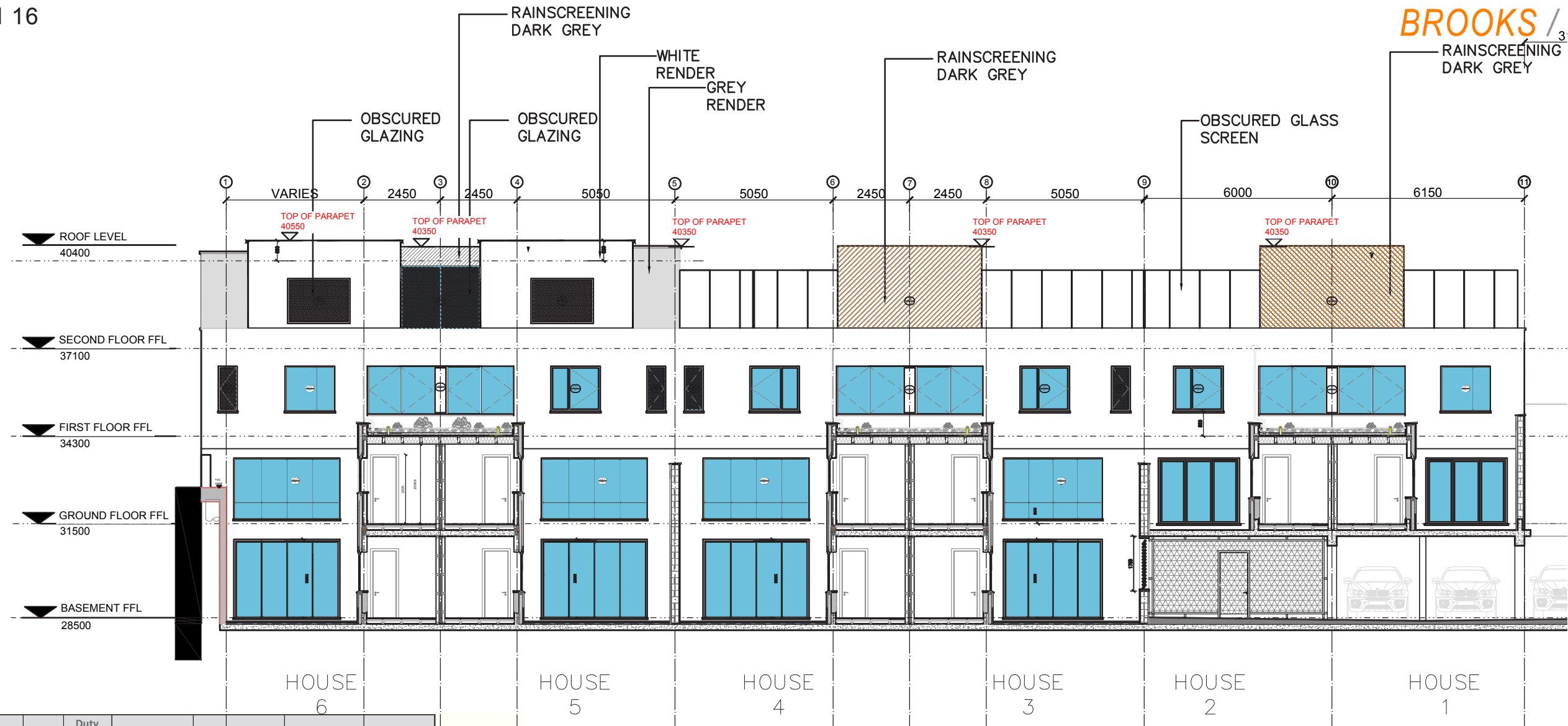


Figure 17: South elevation 1:150 showing new rainwater pipes' runs; one per two houses

UNIT	Room	Floor	Duty (l/s)	Manufacturer	Model	Type
House 1	Shower Room	GF	15	Vent-Axia	VASF-100	Wall/ Ceiling mounted extract
	Kitchen	GF	30	Cooker Hood to be specified by others		
	Utility Room	GF	30	Vent-Axia	Centrif Duo Plus T	Wall/ Ceiling mounted extract
	Bed-1 En-Suite	FF	15	Vent-Axia	VASF-100	Wall/ Ceiling mounted extract
	Shower Room	GF	15	Vent-Axia	VASF-100	Wall/ Ceiling mounted extract
House 2	Kitchen	GF	30	Cooker Hood to be specified by others		
	Utility Room	GF	30	Vent-Axia	Centrif Duo Plus T	Wall/ Ceiling mounted extract
	Bed-1 En-Suite	FF	15	Vent-Axia	VASF-100	Wall/ Ceiling mounted extract
	Shower Room	BSMT	15	Vent-Axia	VASF-100	Wall/ Ceiling mounted extract
	Kitchen	BSMT	30	Cooker Hood to be specified by others		
House 3	Utility Room	BSMT	30	Vent-Axia	Centrif Duo Plus T	Wall/ Ceiling mounted extract
	Toilet	GF	15	Vent-Axia	VASF-100	Wall/ Ceiling mounted extract
	Bed-1 En-Suite	FF	15	Vent-Axia	VASF-100	Wall/ Ceiling mounted extract
	Bed-2 En-suite	FF	15	Vent-Axia	VASF-100	Wall/ Ceiling mounted extract
	Shower Room	BSMT	15	Vent-Axia	VASF-100	Wall/ Ceiling mounted extract
House 4	Kitchen	BSMT	30	Cooker Hood to be specified by others		
	Utility Room	BSMT	30	Vent-Axia	Centrif Duo Plus T	Wall/ Ceiling mounted extract
	Toilet	GF	15	Vent-Axia	VASF-100	Wall/ Ceiling mounted extract
	Bed-1 En-Suite	FF	15	Vent-Axia	VASF-100	Wall/ Ceiling mounted extract
	Bed-2 En-suite	FF	15	Vent-Axia	VASF-100	Wall/ Ceiling mounted extract
House 5	Shower Room	BSMT	15	Vent-Axia	VASF-100	Wall/ Ceiling mounted extract
	Kitchen	BSMT	30	Cooker Hood to be specified by others		
	Utility Room	BSMT	30	Vent-Axia	Centrif Duo Plus T	Wall/ Ceiling mounted extract
	Toilet	GF	15	Vent-Axia	VASF-100	Wall/ Ceiling mounted extract
	Bed-1 En-Suite	FF	15	Vent-Axia	VASF-100	Wall/ Ceiling mounted extract
House 6	Bed-2 En-suite	FF	15	Vent-Axia	VASF-100	Wall/ Ceiling mounted extract
	Bed-3 En-suite	SF	15	Vent-Axia	VASF-100	Wall/ Ceiling mounted extract
	Shower Room	BSMT	15	Vent-Axia	VASF-100	Wall/ Ceiling mounted extract
	Kitchen	BSMT	30	Cooker Hood to be specified by others		
	Utility Room	BSMT	30	Vent-Axia	Centrif Duo Plus T	Wall/ Ceiling mounted extract

Equipment Specification

Scope

Each house will be ventilated by intermittent extract fans.
Kitchens to be provided with cooker hoods providing a minimum 30 l/s extract.
Bathrooms to be provided with fans providing a minimum 15 l/s extract.
Flat duct shall be used, run horizontally in ceilings. Termination points to be indicated by the Architect.
Intumescent fire dampers to be used at all fire compartment penetrations.

Ventilators

All the ventilation installation must meet part F of the current building regulations.
The installations are to be in accordance with BS Codes of Practice 413:1973 and Manufacturer's instructions and recommendations.
Fans to be installed with ant-vibration mounts and 200mm flexible ducting either side.
Fan noise not to exceed 30 dB(A)
Intake and exhausts for the ventilation systems will generally be taken to an external wall to terminate with intake or exhaust louvers or ridge tiles.
Exhausts from the lower floors will be taken to the external wall and discharge via an air brick.

Ductwork

Flat duct shall be used, run horizontally in ceilings. Termination points to be indicated by the Architect, generally on flank walls or to roof.
Plastic flat duct 204mm x 60mm
Spiral wound steel ductwork: Bathrooms 100mm, kitchens 150mm.
Fire dampers and access panels to be provided at all penetrations through fire compartments.
Where intumescent fire dampers are used, no access panel is required.

Figure 18: Extractor fan distribution table