

Detail drawings and/or samples of the following shall be submitted to and approved in writing by the Council before any works is commenced on the relevant part of the development:

A) all new windows/fenestration and doors (scale 1:10)

B) the residential gate (scale 1:25)

C) the entrance door to the employment space (scale 1:25)

The relevant part of the works shall not be carried out otherwise than in accordance with details thus approved.

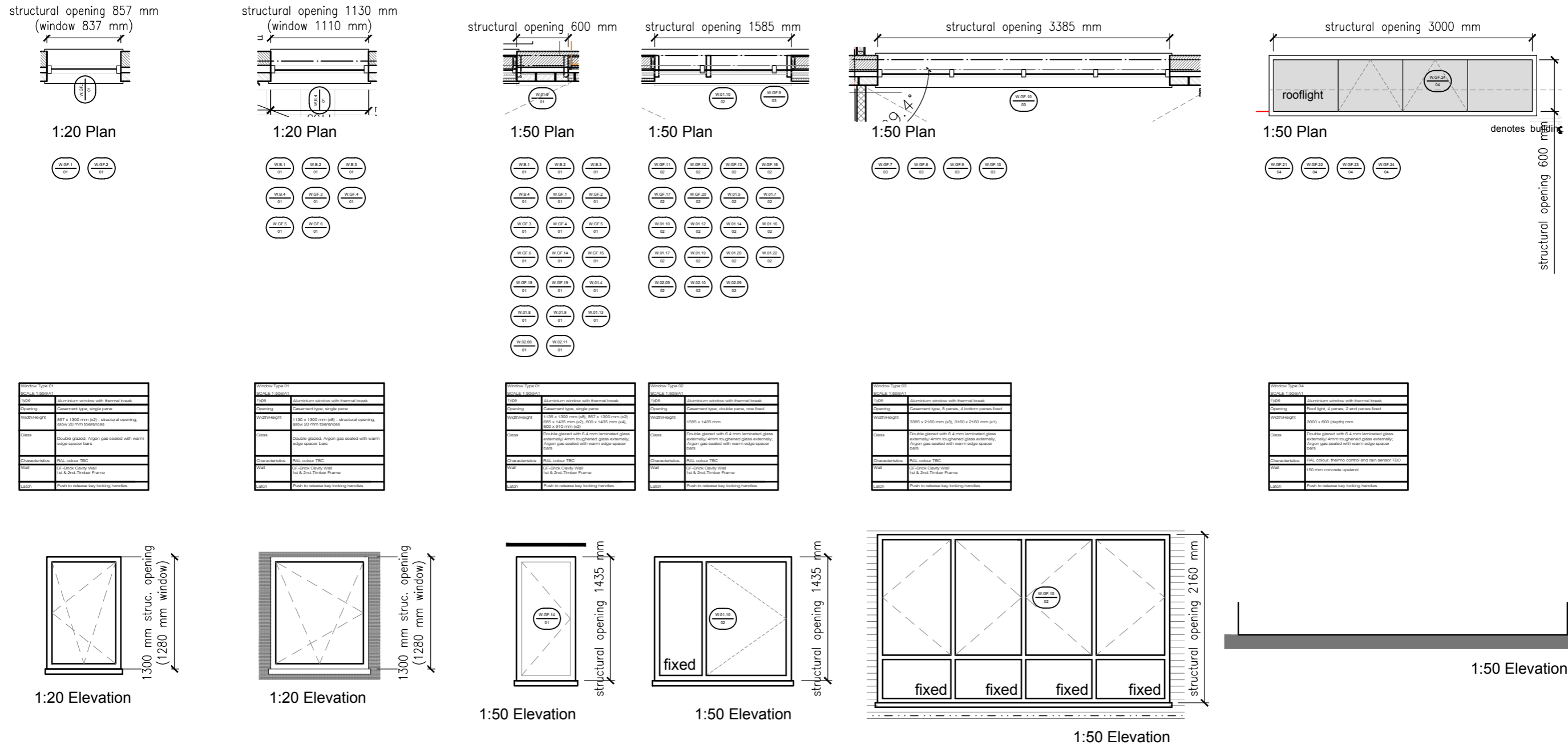
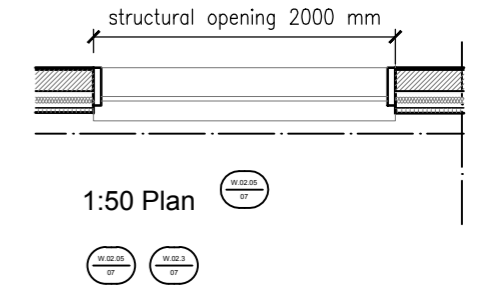
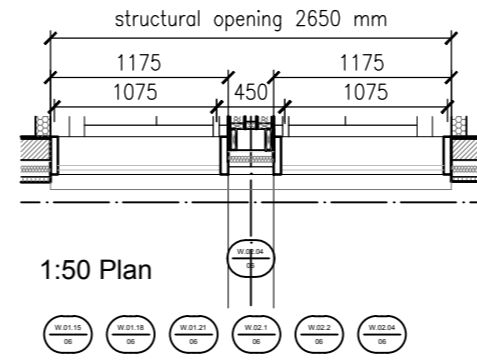
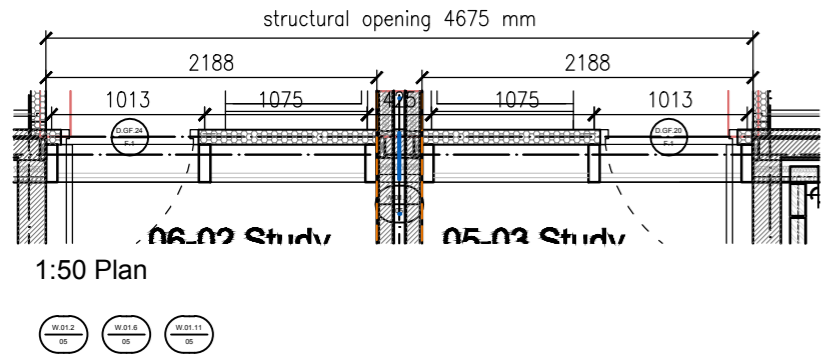


Figure 11 : Window schedule per window type (plan, elevation and specification table)

**Product and Description:**

- 120mm square tube covers 56mm section thermal break aluminium for tilt and turn window
- 56mm section thermal break aluminium casement window / awning window
- 56mm section thermal break aluminium fixed window
- 63mm section aluminium folding door
- Aluminium thickness: main structure 2.0mm, thermal break aluminium profile
- Finish of aluminium profile: powder coating, RAL 7016 Grey colour
- Glass: Window Type 05 uses 5mm tempered LOW-E+16A+3mm+0.38pvb+3mm insulating clear glass-the glass U value=1.4W/m²K and UK standard; others use 5mm LOW-E+16A+3mm+0.38pvb+3mm insulating clear glass, the in glass U value=1.4W/m²K and UK standard
- Hardware: Germany ROTO tilt and turn window hardware handle lock+friction hinge

CONDITION 14



Window Type 05	
W01.05 (1:50 PLAN)	
Type	Aluminium window with thermal break
Opening	Casement type, 15 panels, top panels operable
Width/Height	4675 x 1435 mm
Glass	Double glazed with 6.4 mm laminated glass externally, 4mm toughened glass internally, Argon gas sealed with warm edge spacer bars
Characteristics	RAL colour, thermo control and rain sensor TBC
Frame	GF-Block Cavity Wall 1st & 2nd-Timber Frame
Finish	Push to release key locking handles

Window Type 06	
W02.04 (1:50 PLAN)	
Type	Aluminium window with thermal break
Opening	Casement type, 15 panels, top panels operable
Width/Height	2650 x 5850 mm (p. 3), 4000 x 2485 mm (p.2), 5950 x 2485 mm (p.1)
Glass	Double glazed with 6.4 mm laminated glass externally, 4mm toughened glass internally, Argon gas sealed with warm edge spacer bars
Characteristics	RAL colour, thermo control and rain sensor TBC
Frame	GF-Block Cavity Wall 1st & 2nd-Timber Frame
Finish	Push to release key locking handles

Window Type 07	
W02.05 (1:50 PLAN)	
Type	Aluminium window with thermal break
Opening	Fixed
Width/Height	2000 x 1435 mm
Glass	Double glazed with 6.4 mm laminated glass externally, 4mm toughened glass internally, Argon gas sealed with warm edge spacer bars, obscured
Characteristics	RAL colour, thermo control and rain sensor TBC
Frame	GF-Block Cavity Wall 1st & 2nd-Timber Frame
Finish	Push

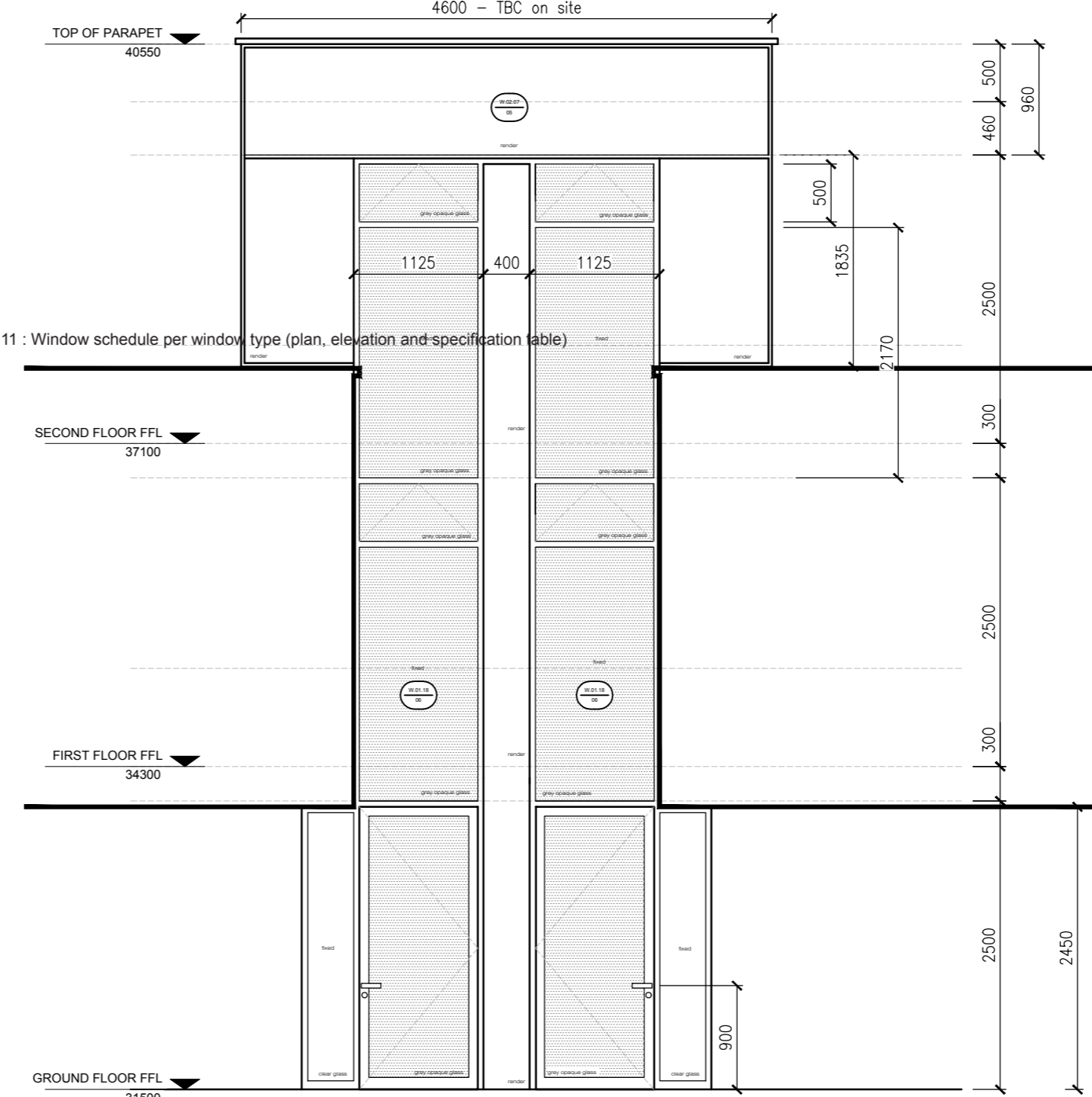
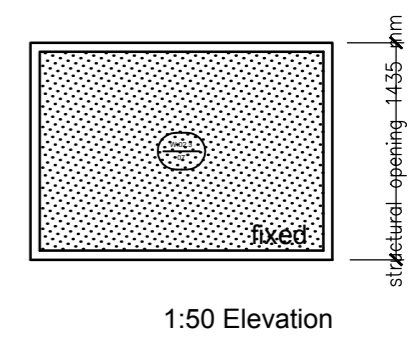
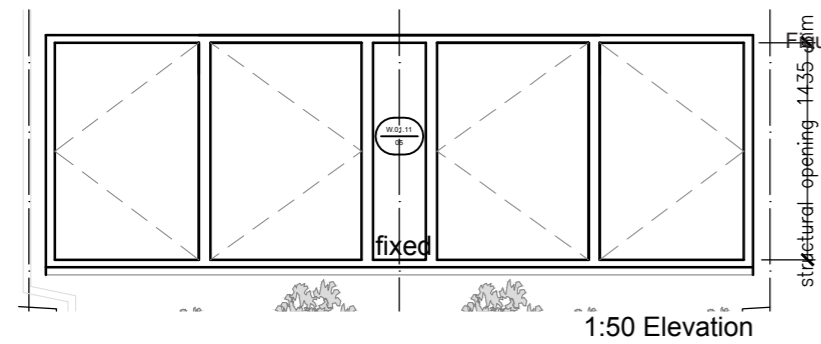
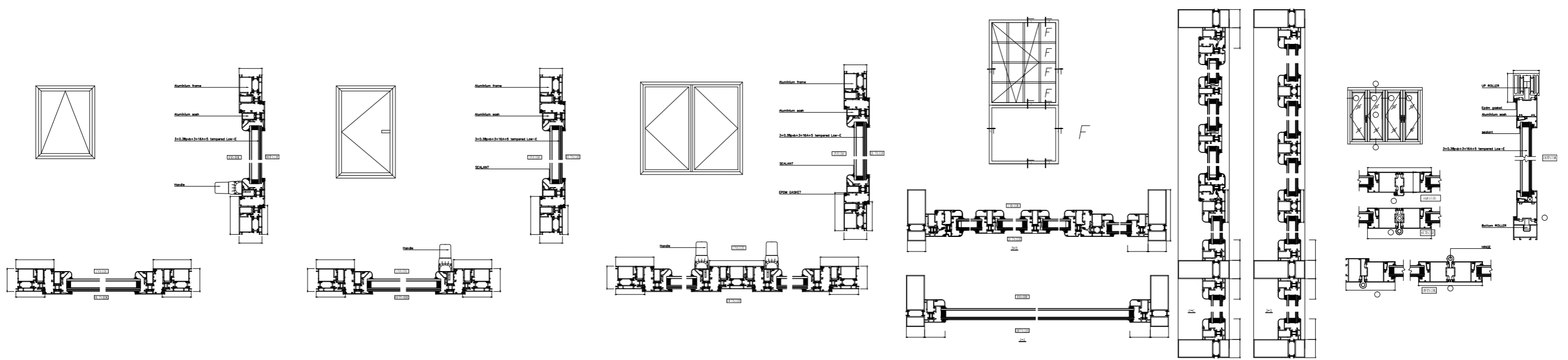
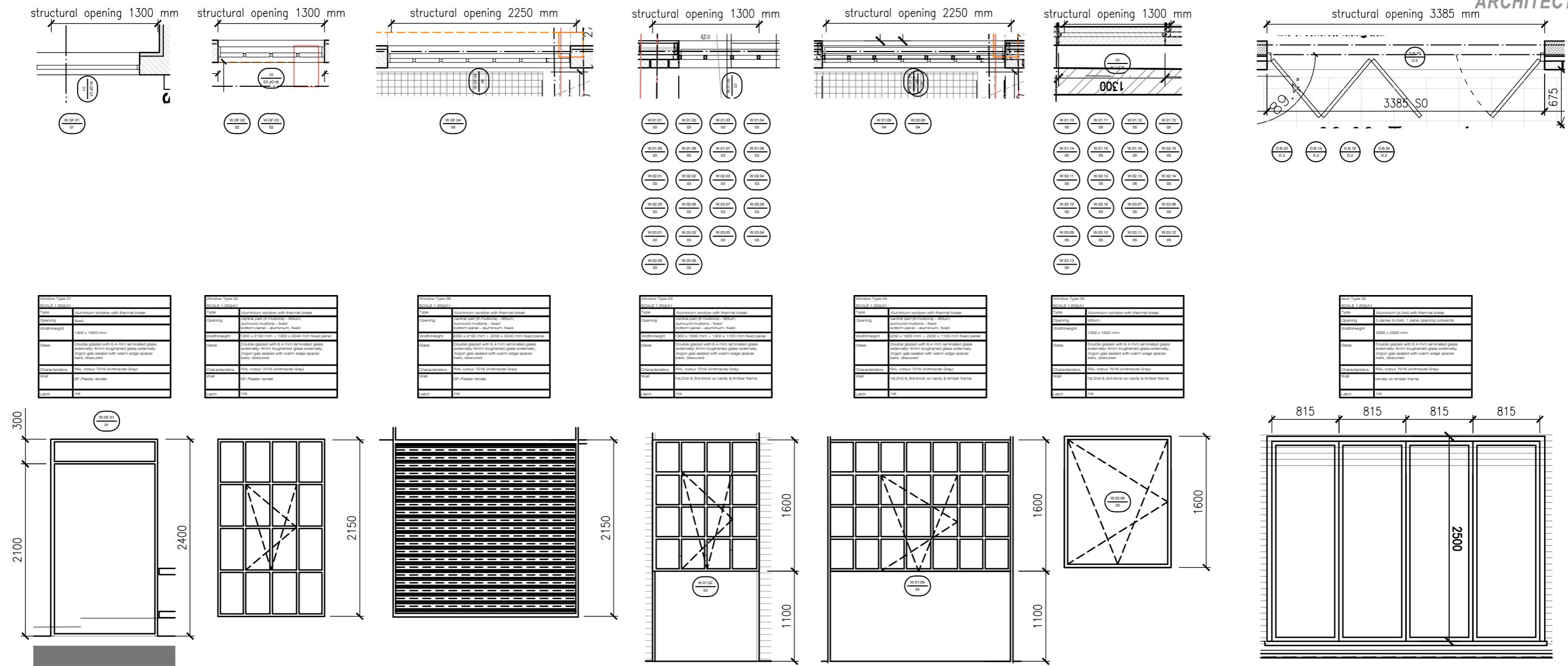


Figure 12 : Window schedule per window type (plan, elevation and specification table)



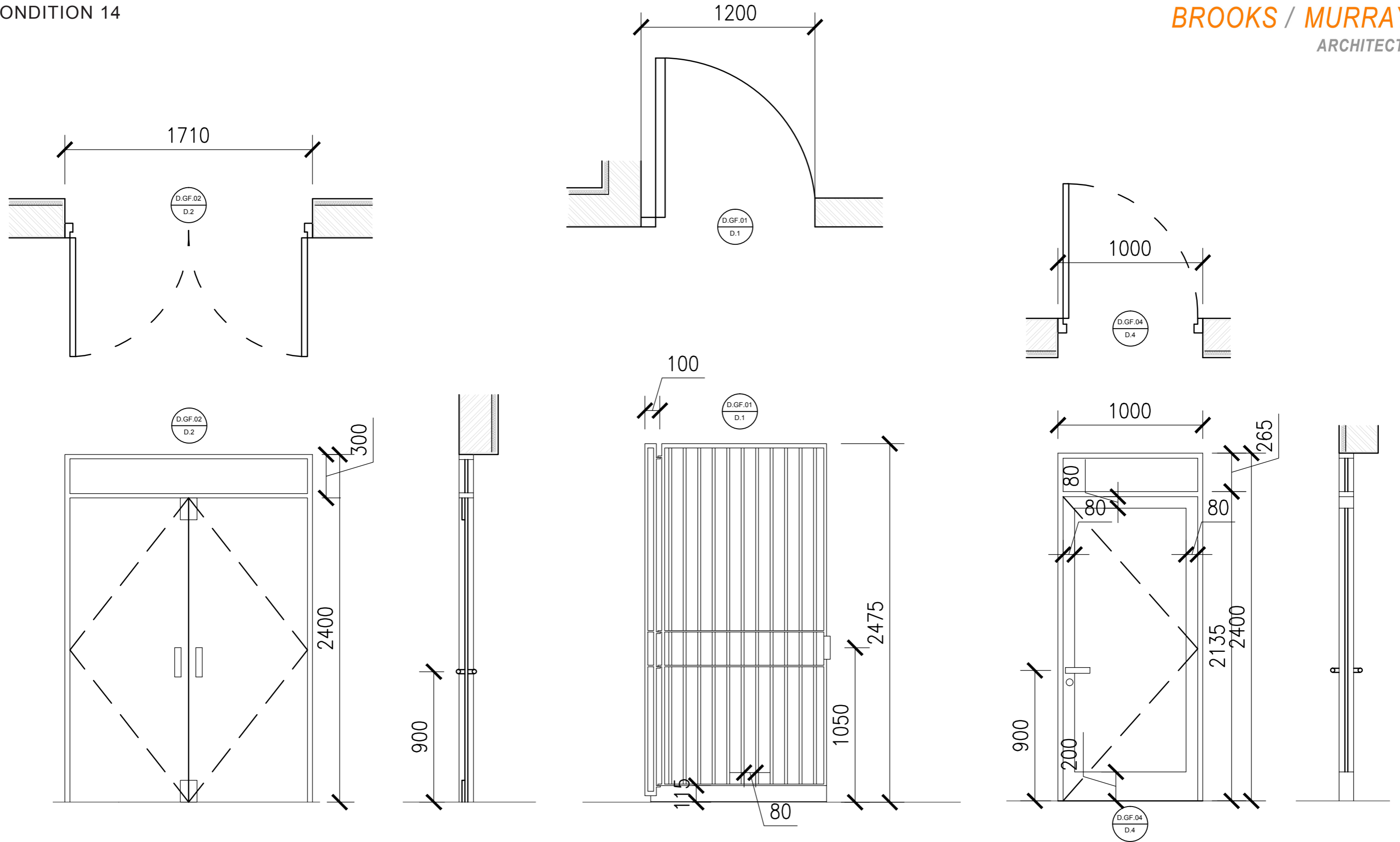


Figure 15: Plan, elevation and section of front and side entrance door to the employment space and security gate