

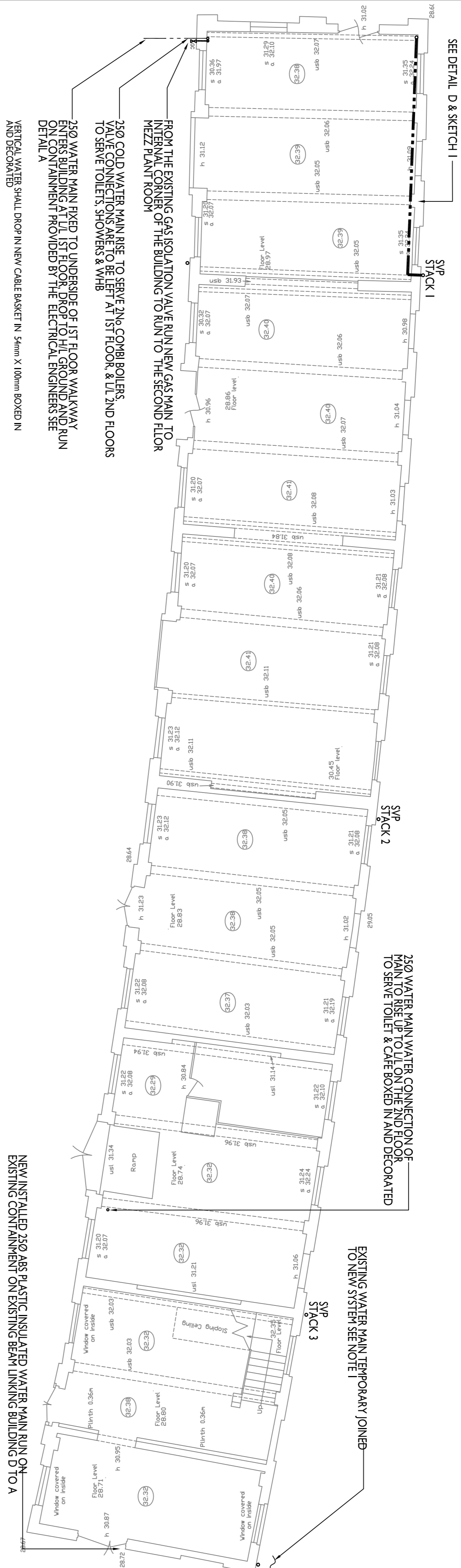
GENERAL NOTES

- 1) Drawing and design Copyright.
- 2) Figured dimensions only are to be used.
- 3) All dimensions to be checked on site differences between drawings and specification or bills of quantities to be referred to OPTIMA B.E.S. Ltd.

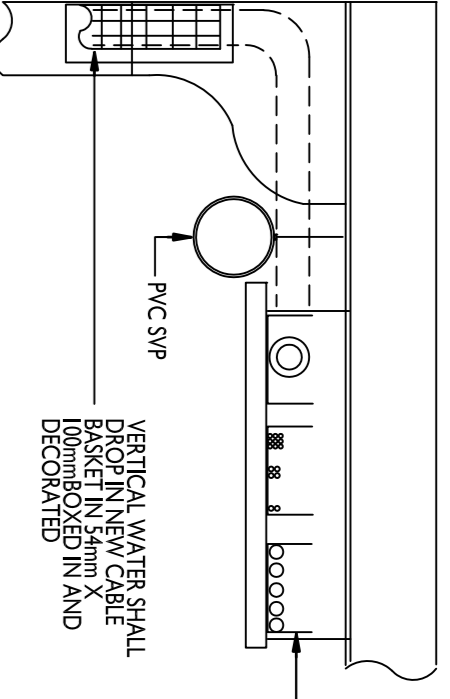
RELATED DRAWINGS & SPECIFICATIONS SCHEDULE (AT TIME OF ISSUE)

OPTIMA	AP297-E-500	BLOCK B ELECTRICAL SERVICES SCHEMATIC
OPTIMA	AP297-E-100	BLOCK B EXISTING SERVICES FRONT ELEVATION
OPTIMA	AP297-E-200	BLOCK B SERVICES ELECTRICAL GROUND, FIRST & SECOND FLOOR
OPTIMA	AP297-M-201	BLOCK B SERVICES MECHANICAL GROUND, FIRST & SECOND FLOOR
OPTIMA	AP297-E-300	BLOCK B SERVICES FRONT & REAR ELEVATION
OPTIMA	AP297-JULY 2014	BLOCK B MECHANICAL & ELECTRICAL SPECIFICATION

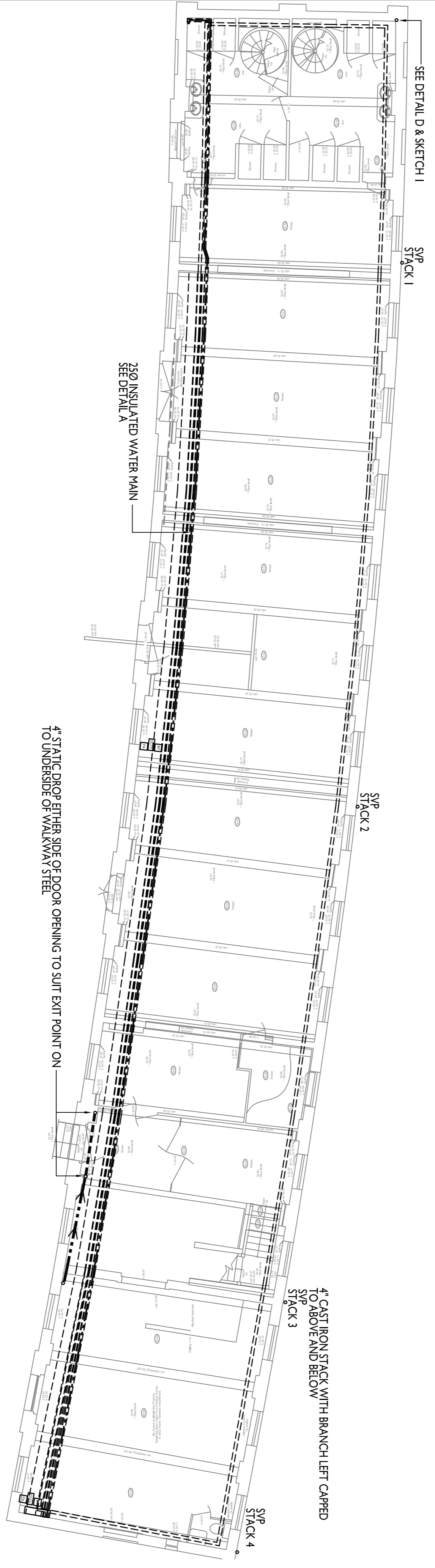
GROUND FLOOR



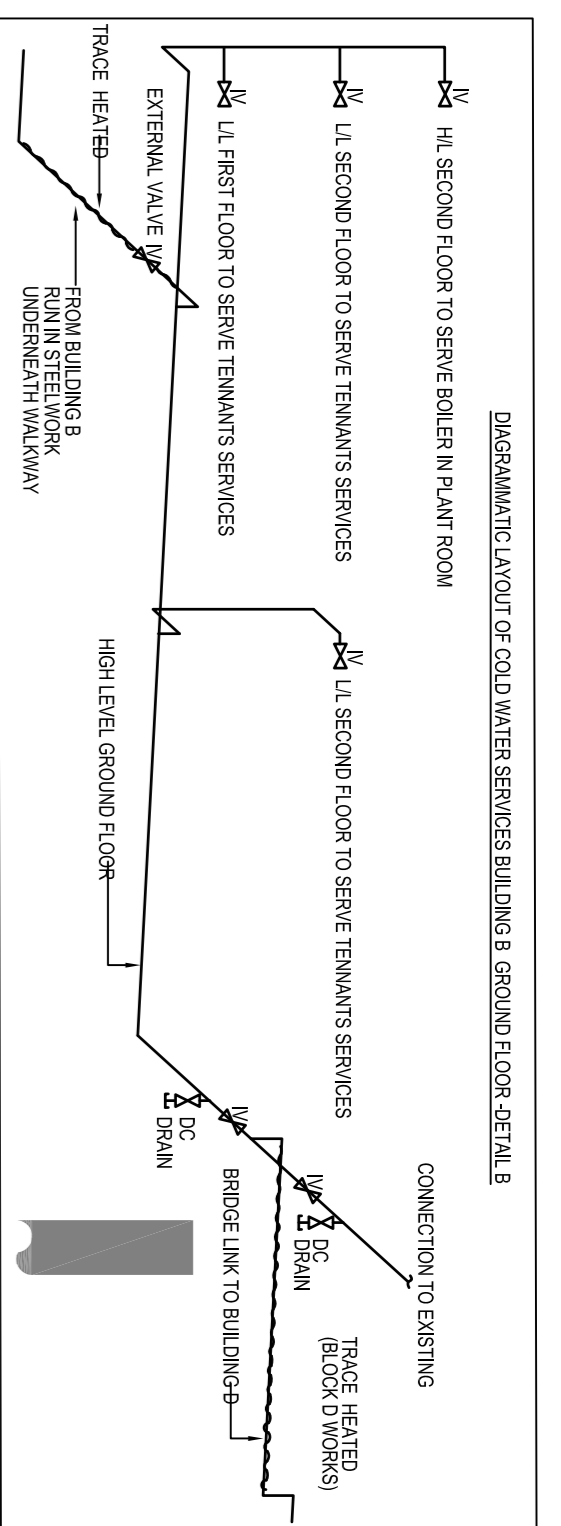
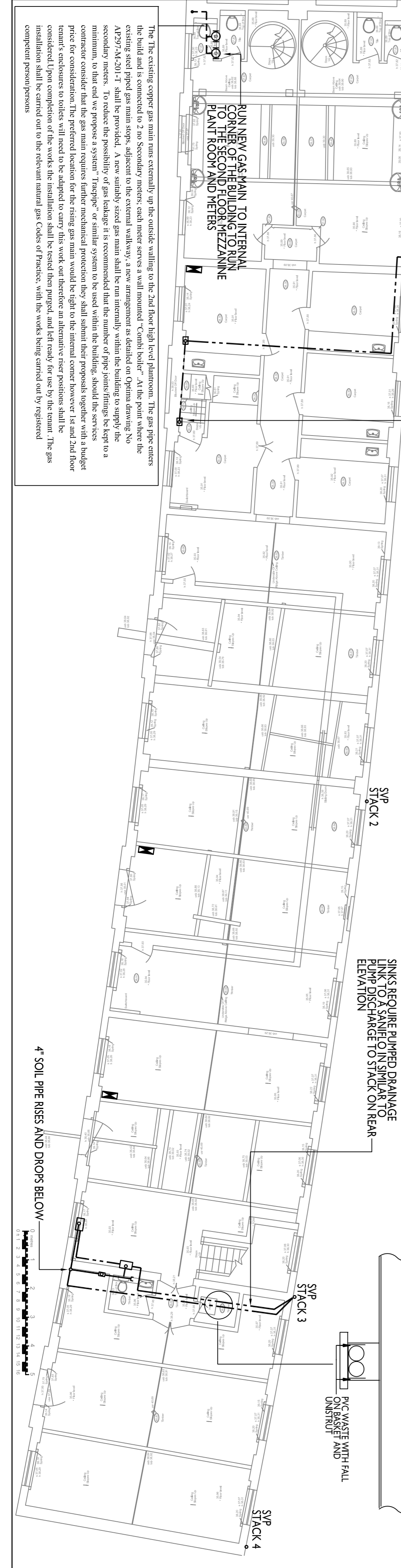
DETAIL A "SEE SKETCH 1"



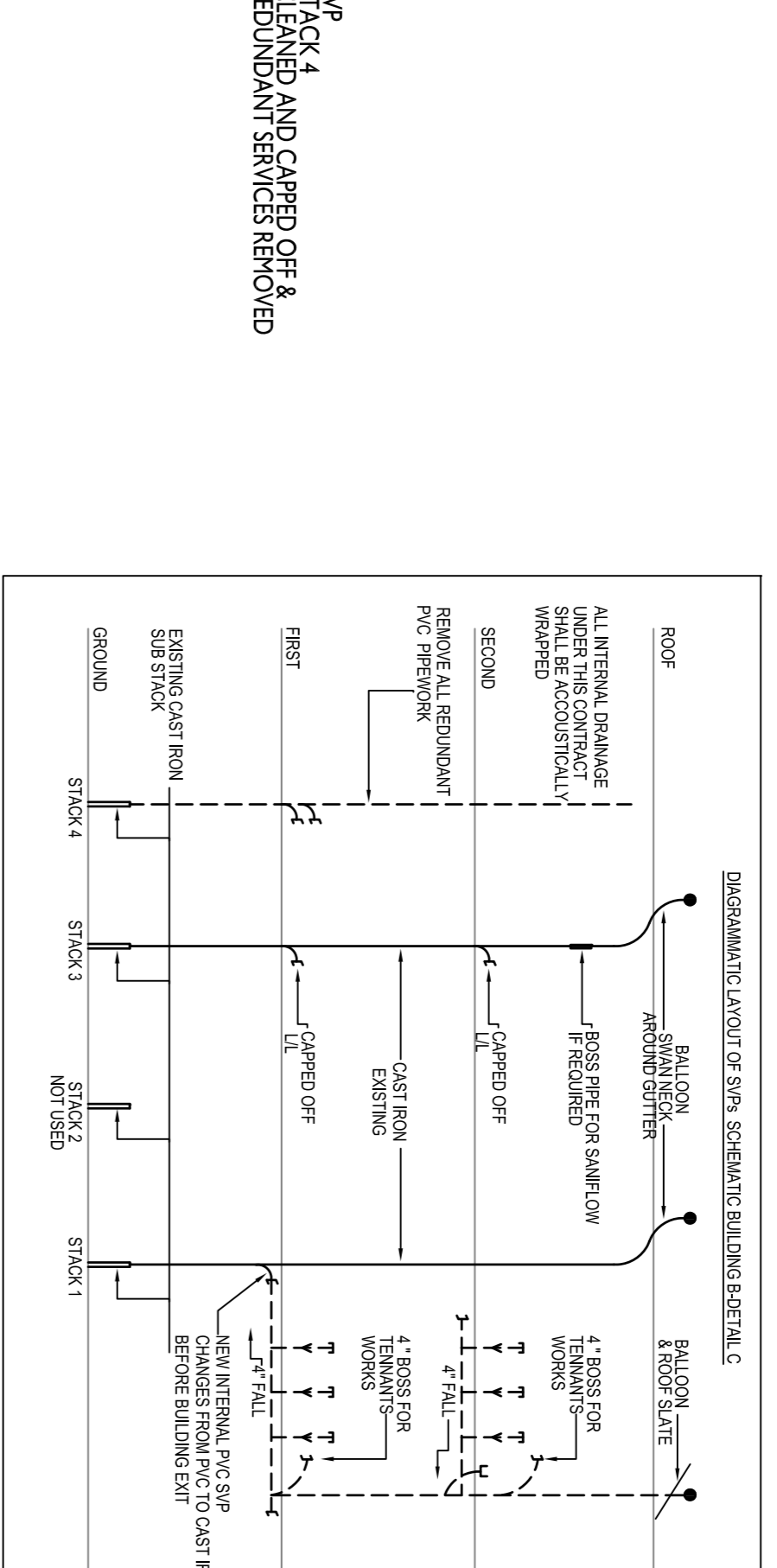
FIRTS FLOOR



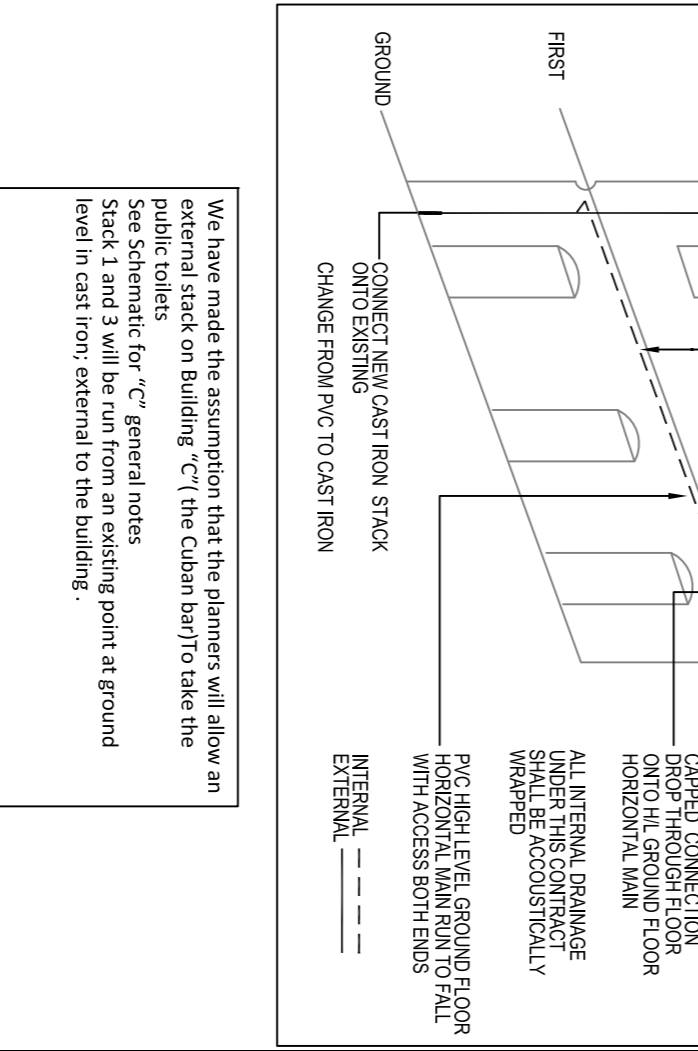
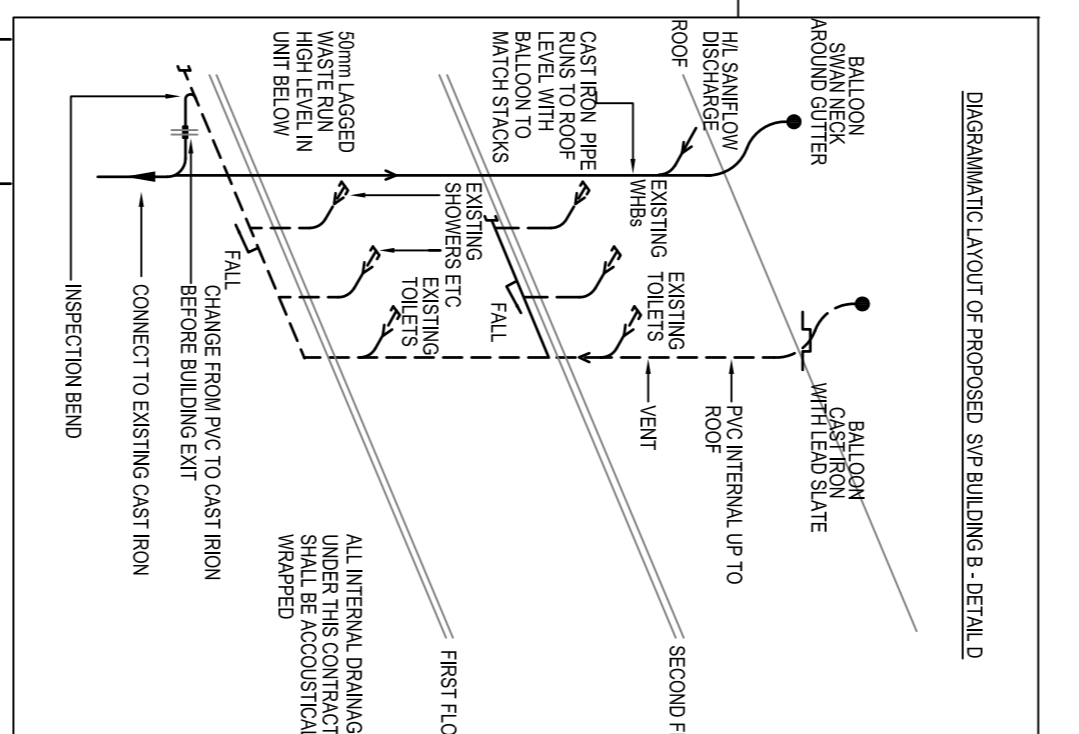
SECOND FLOOR



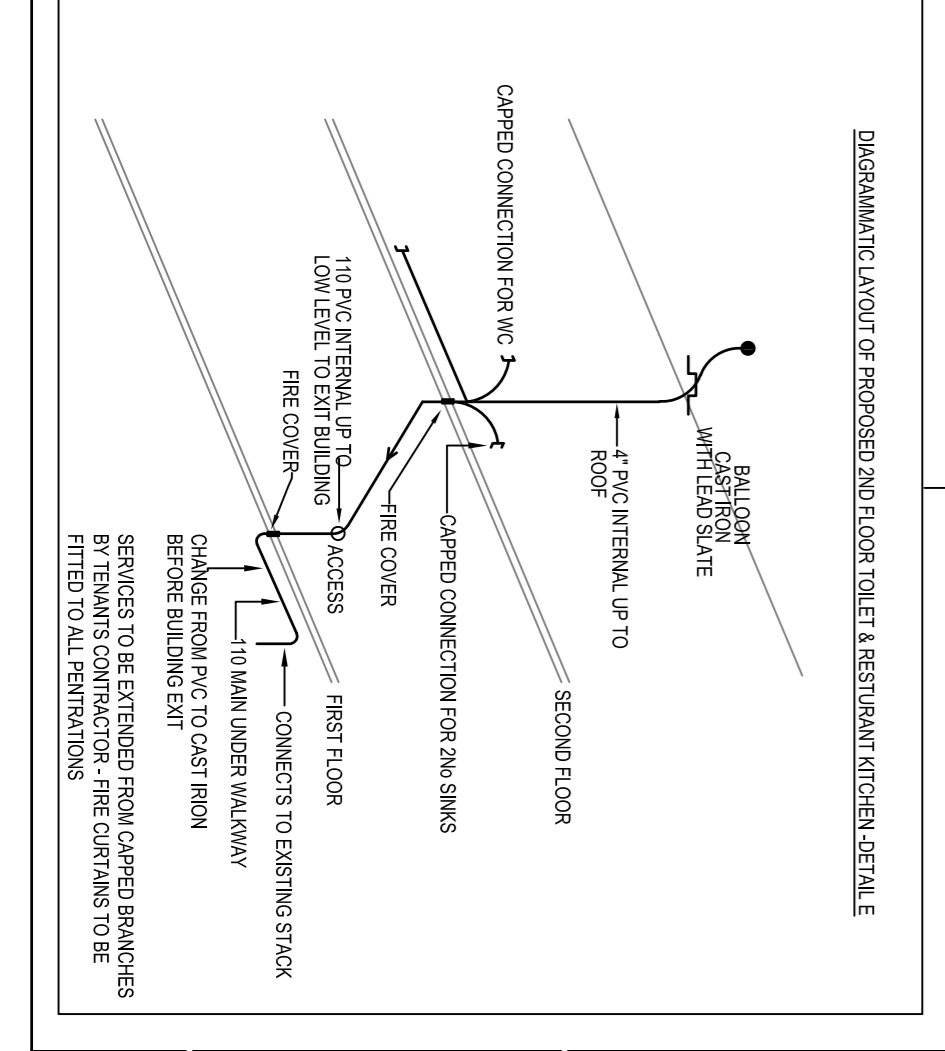
The running at ground floor of a new water main upon a supporting frame provided by the electrical engineer, off this main will be run a independently supported water supply up to the roof of the building. This main is to be adequately sized to accommodate the fittings and will be valved and capped off for pick up by others, within the toilet area. At the end of the run the building a adequately sized water service to serve the combi boilers on the 2nd floor mezzanine level. provision is also to be made to provide a stopcock/capped water connection at low level at 1st and 2nd floor to be finally a connection shall as a temporary measure is to be linked into the existing watermain at block "D". Find all as described on drg no



It is assumed that the plumbers will not allow a horizontal run of external drainage from the proposed new stack to pick up 1st and 2nd floor existing toilets and fittings at block "B" end. In cast iron at high level ground floor a branch will be provided to enter the building, where it will change to PVC, to run at high level within the ground floor shop unit to the corner where it will rise up to atmosphere, termination being in cast iron with suitable lead and were below as before contractor leave a single capped 110mm dia connection at each floor for toilets, and low level capped connections for showers and washhand basins as per the schematic. To enable the tenants contractor, sufficient scope to grade the falls correctly it is proposed that left for the showers and wash hand basins will on a high level lead on the first floor with branches brought back up to low level 2nd floor then capped. It is proposed that the same arrangement apply to the 1st floor with wasted dropping on to a high level from on the ground floor. All proposed to be successfully valved and fire collars fitted at all penetrations.



We have made the assumption that the plumbers will allow an external stack on building "C" (the Clean bar) to take the public toilets. Stack 1 and 3 will be cut from an existing point at ground level in cast iron, external to the building.



Job No. AP297
Drawing No. M201
Revision T2