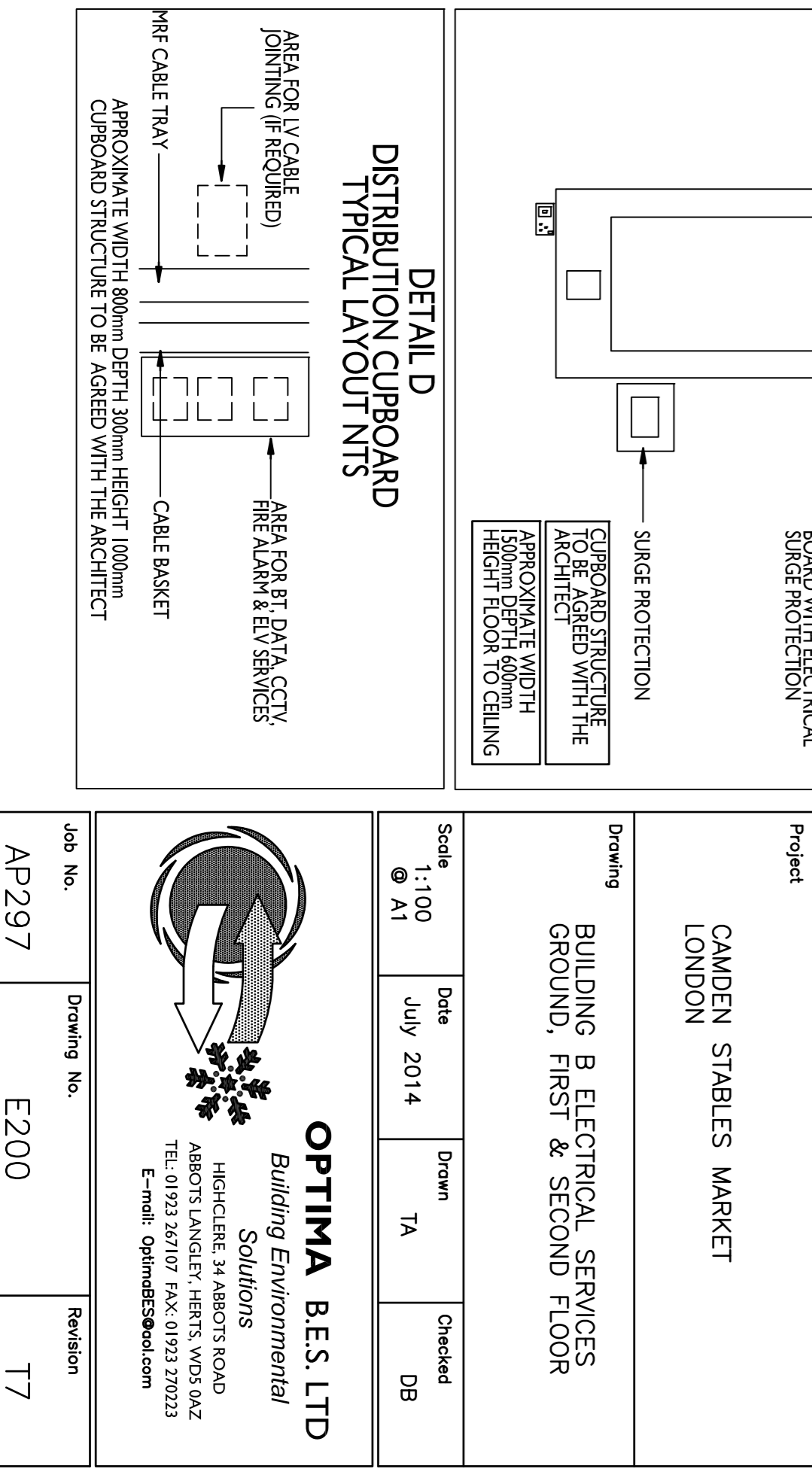
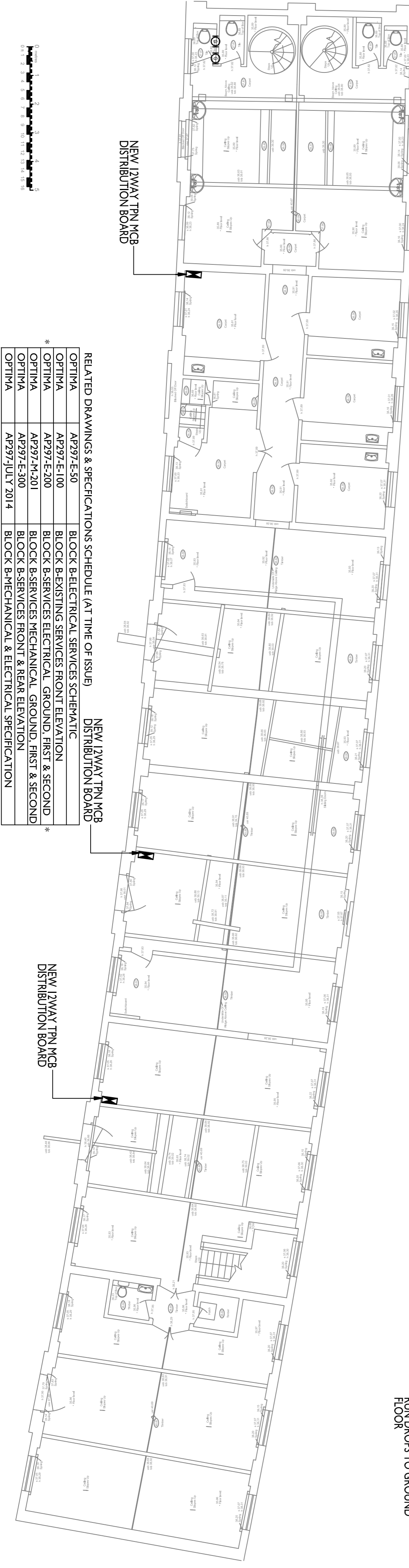
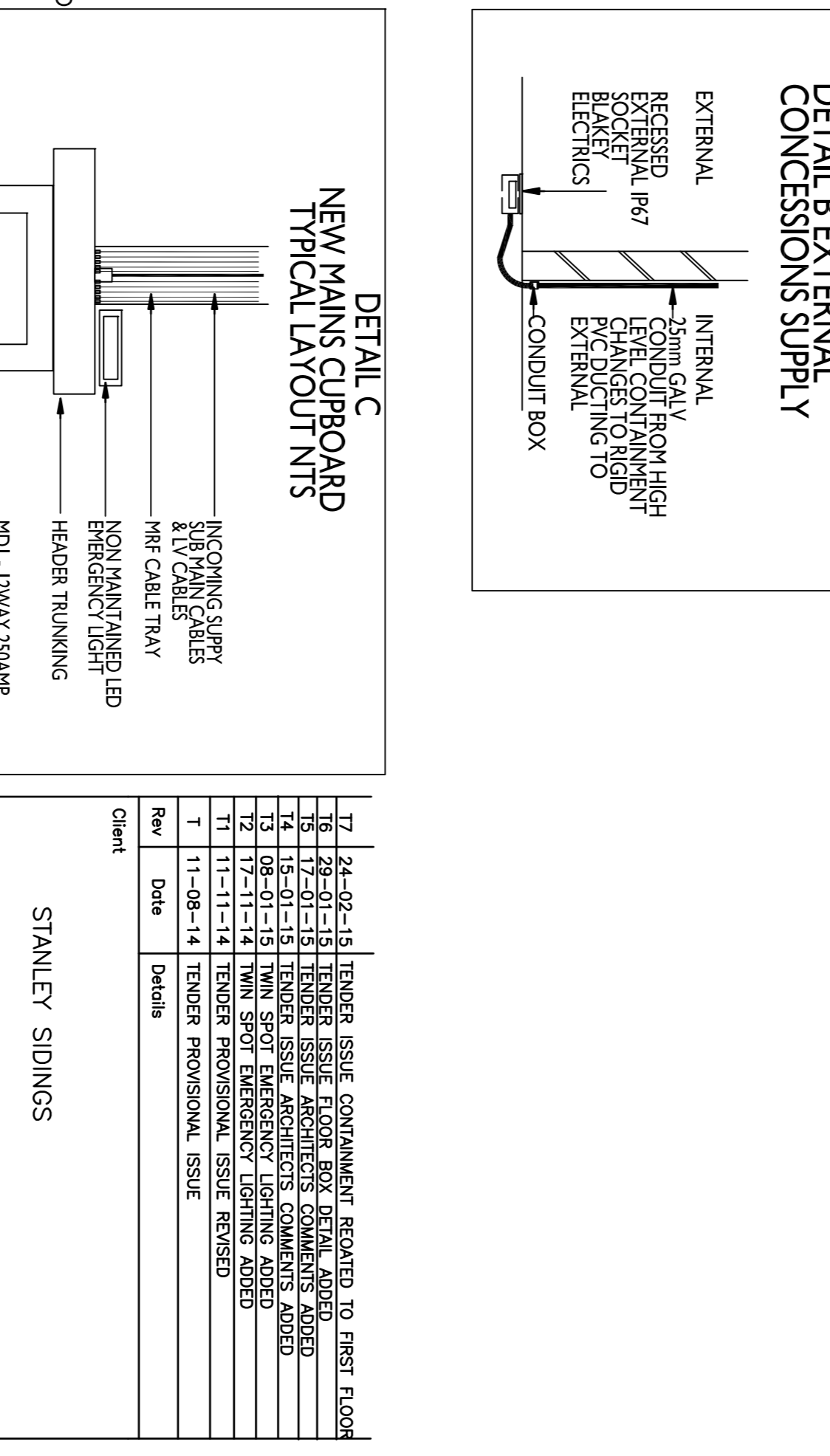
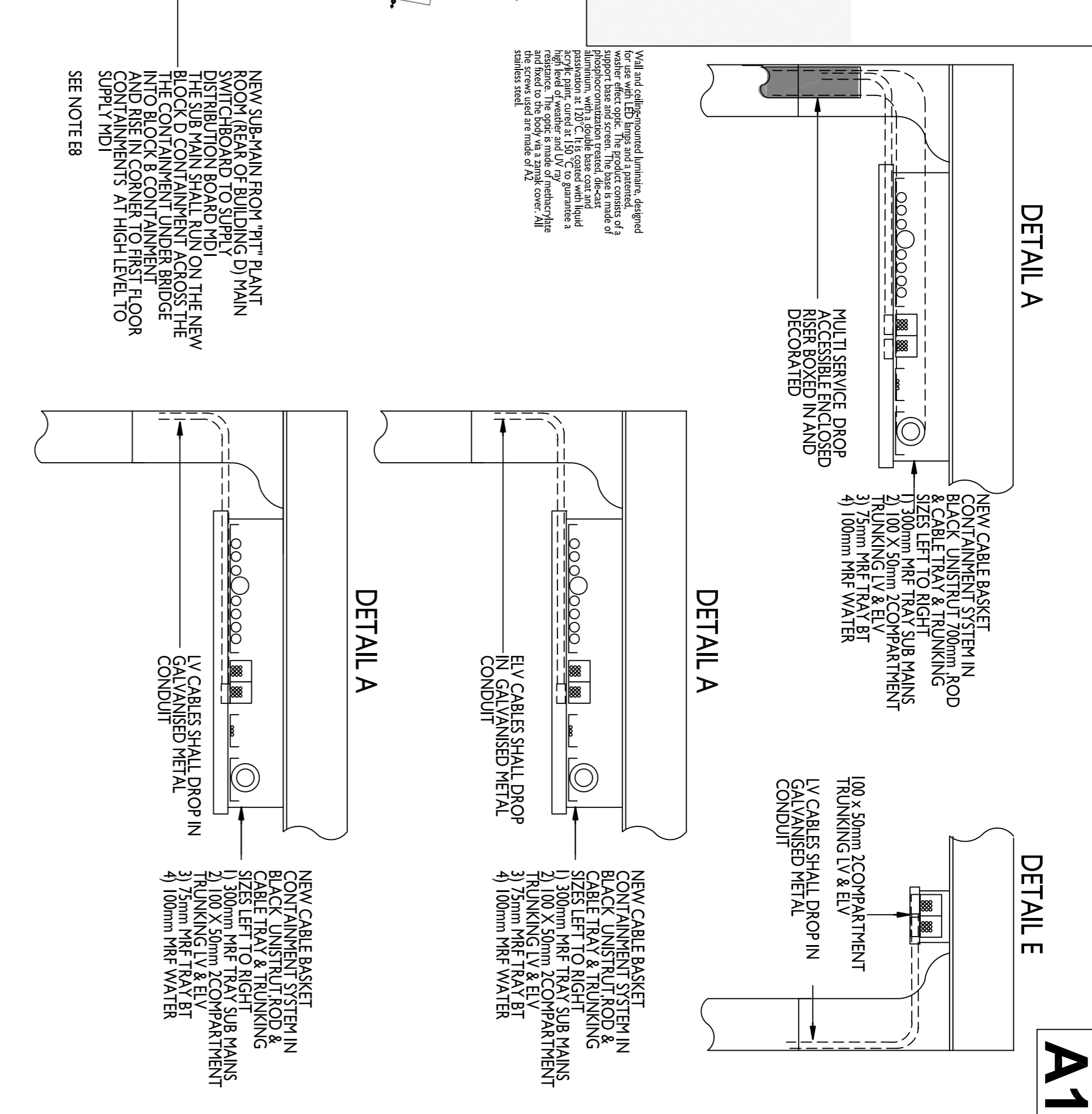
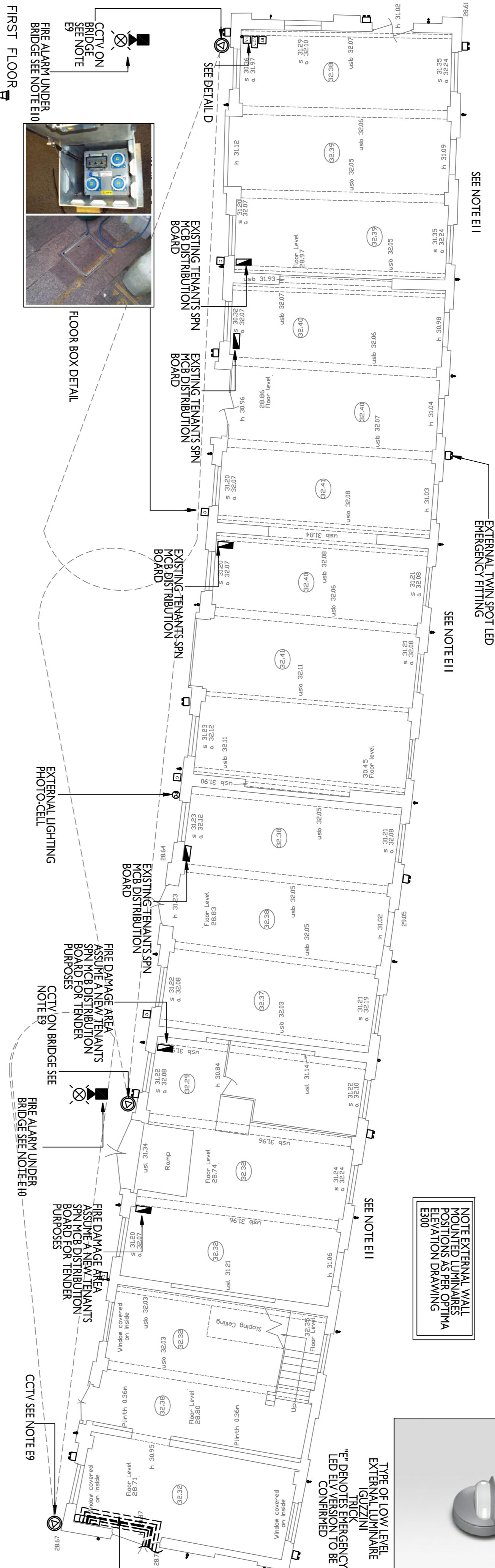


- GENERAL NOTES**
- 1) Drawing and design Copyright
 - 2) All dimensions are to be checked on site. Differences between drawings and specification or bills of quantities to be referred to OPTIMA B.E.S. Ltd.
 - 3) The contractor shall employ specialist contractors to remove the mechanical & electrical services from the existing building. The contractor shall ensure the transfer of existing services from the facade to the new internal containment system ducting and external links between buildings.

- ELECTRICAL SERVICES NOTES**
- E1) The objective is to achieve a distribution solution to remove the mechanical & electrical services from the existing building. The contractor shall ensure the transfer of existing services from the facade to the new internal containment system ducting and external links between buildings. The systems are as follows:
BT
Data
CCTV
Intercom (if applicable)
Extra low voltage cables
Low voltage cabling
Aerial services
Any electrical services passing through fire compartments shall be sleeved and sealed in accordance with current building regulations.
All cable joints must be accessible.
 - E2) The contractor shall employ specialist contractors to remove the mechanical & electrical services from the existing building. The contractor shall ensure the transfer of existing services from the facade to the new internal containment system ducting and external links between buildings. The systems are as follows:
BT
Data
CCTV
Intercom (if applicable)
Extra low voltage cables
Low voltage cabling
Aerial services
Any electrical services passing through fire compartments shall be sleeved and sealed in accordance with current building regulations.
All cable joints must be accessible.
 - E3) For mains and sub-circuit schematics see OPTIMA drawing E30.
 - E4) Containment and ducting details are indicative only. It is the responsibility of the contractor to liaise with the specialist contractors & architect on final locations to ensure the OPTIMA BES Ltd specification requirements are achieved.
 - E5) All electrical shall be installed as per the requirements of BS 7671 IET Wiring Regulation and current amendments.
 - E6) Any electrical services passing through fire compartments shall be sleeved and sealed in accordance with current building regulations.
All cable joints must be accessible.
 - E7) All cable sizes are indicative only. It is the responsibility of the electrical contractor to ensure the cable sizes to the requirements of BS 7671 IET Wiring Regulations and current amendments.
 - E8) A new 95mm XLPE/SVA/SLF cable shall emanate from building D 'rear' 'PT' plant room from the existing main distribution board with a new 200mm MCCB. The cable shall run on new cable tray within building A (see detail A) and building B. For further details see Optima drawing E50.
 - E9) CCTV - Inductive locations only from locations to be confirmed by the CCTV specialist company.
 - E10) Fire Arm - Inductive locations only from locations to be confirmed by the Fire Alarm specialist company.
 - E11) External lighting shall be wired in galvanised metal conduit and 470 to stages cable run internally within the building facade on site.

GROUND FLOOR



RELATED DRAWINGS & SPECIFICATIONS SCHEDULE (AT THE OF ISSUE)

OPTIMA	AP297-E-50	BLOCK B-ELECTRICAL SERVICES SCHEMATIC
OPTIMA	AP297-E-100	BLOCK B-SERVICES FRONT ELEVATION
OPTIMA	AP297-E-200	BLOCK B-SERVICES ELECTRICAL GROUND, FIRST & SECOND FLOOR
OPTIMA	AP297-E-300	BLOCK B-SERVICES MECHANICAL, GROUND, FIRST & SECOND FLOOR
OPTIMA	AP297-E-300	BLOCK B-SERVICES MECHANICAL & REAR ELEVATION
OPTIMA	AP297-JULY 2014	BLOCK B-MECHANICAL & ELECTRICAL SPECIFICATION

REVISIONS

Rev	Date	Details
T	11-08-14	TENDER PROVISIONAL ISSUE
T	11-11-14	TENDER PROVISIONAL ISSUE REVISED
T	17-11-14	TWIN SPOT EMERGENCY LIGHTING ADDED
T	08-01-15	TWIN SPOT EMERGENCY LIGHTING ADDED
T	14-01-15	TENDER ISSUE ARCHITECTS COMMENTS ADDED
T	14-01-15	TENDER ISSUE ARCHITECTS COMMENTS ADDED
T	24-02-15	TENDER ISSUE CONTAINMENT RELATED TO FIRST FLOOR

PROJECT INFORMATION

Client: STANLEY SIDINGS

Project: CAMDEN STABLES MARKET LONDON

Drawing: BUILDING B ELECTRICAL SERVICES GROUND, FIRST & SECOND FLOOR

Scale

Scale: 1:100

Date: July 2014

Drawn: TA

Checked: DB

Job No. AP297

Drawing No. E200

Revision T7

OPTIMA B.E.S. LTD
Building Environmental Solutions
HIGHCLIFFE, 34 ABBOTS ROAD
TELE: 01932 267107 FAX: 01932 270233
E-mail: optima@bes.com