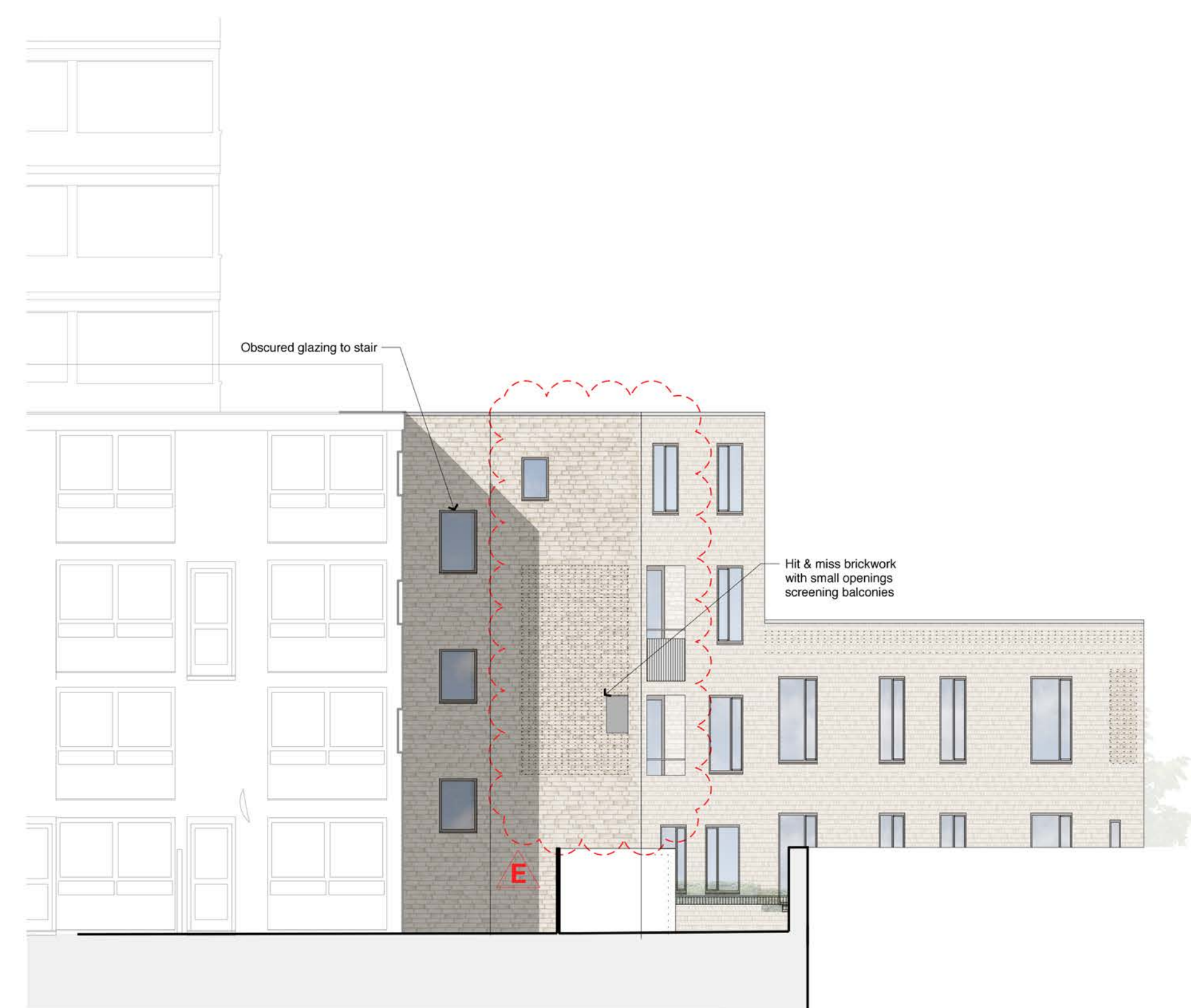


**South Elevation**  
 (facing Railway Path)



**West Elevation**  
 (facing Barrington Court in distance)

Railway Cutting



**North Elevation**  
 (facing Barrington Close and railway in distance)



**East Elevation**  
 (facing Barrington Close)

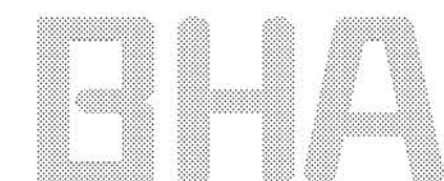
E	07.05.15	NI	CB
For Planning Amendment - Changes to fenestration, ground floor kitchen/living layouts and bedroom layouts, revisions highlighted			
D	16.04.15	TS	CB
Planning Amendments - Changes to fenestration, ground floor kitchen/living layouts and bedroom layouts			
C	04.04.14	TS	CB
Issued for Planning			
B	21.03.14	TS	CB
Notes added, Unit 1 revised			
A	18.03.14	TS	CB
Revised following Pre-Planning comments & Tenants' Consultation			
Revision	Date	By	Checked

For  
 Planning

**Site 3 - Barrington & Lambie  
 Boiler House  
 Proposed Elevations**  
 Barrington & Lambie Infill Sites

**1381\_P32\_E**

Scale: 1:100 at A1  
 1:200 at A3  
 Date: 28/11/2013  
 Drawn: TS



**BURD HAWARD ARCHITECTS LTD**  
 United House, North Road  
 London N7 9DP  
 T +44 20 7267 9815  
 E studio@burdhaward.com