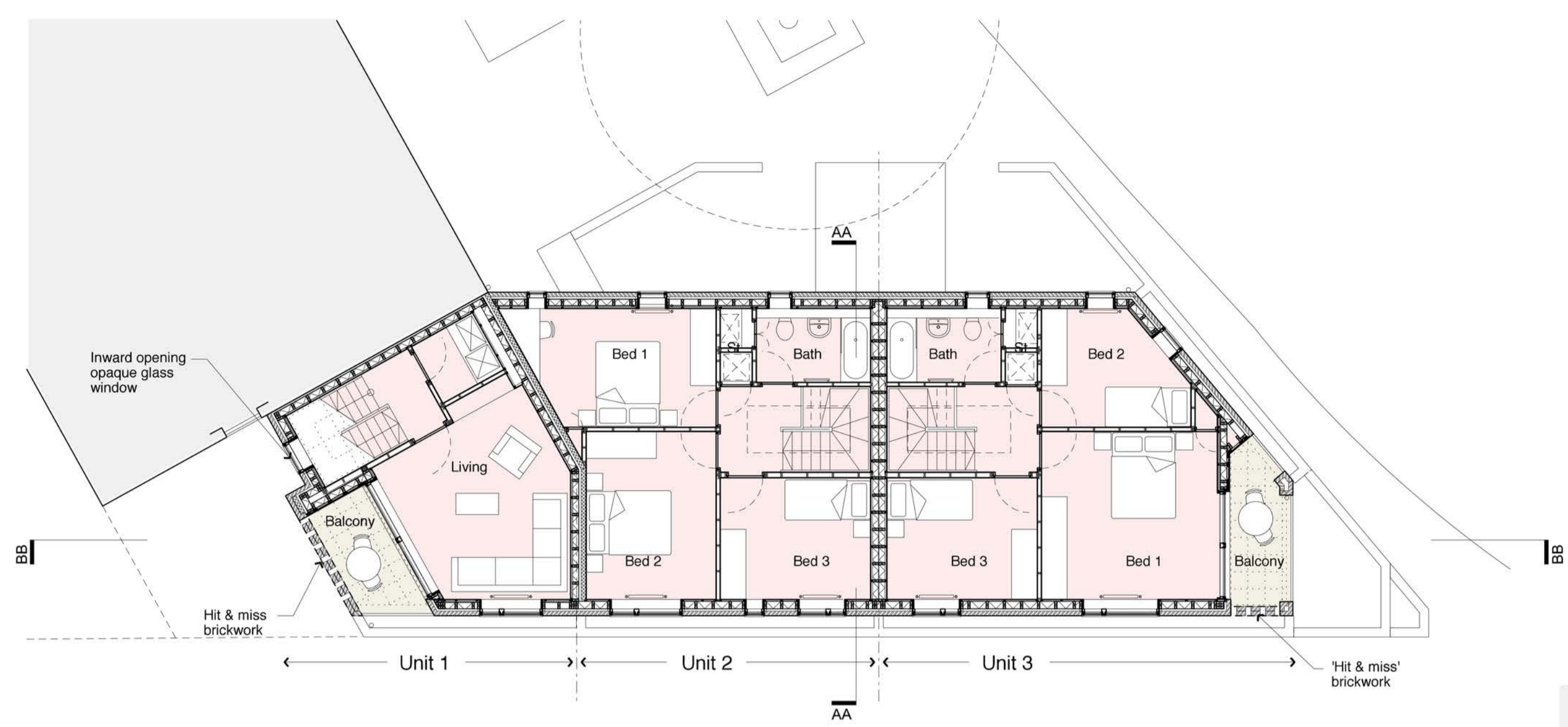
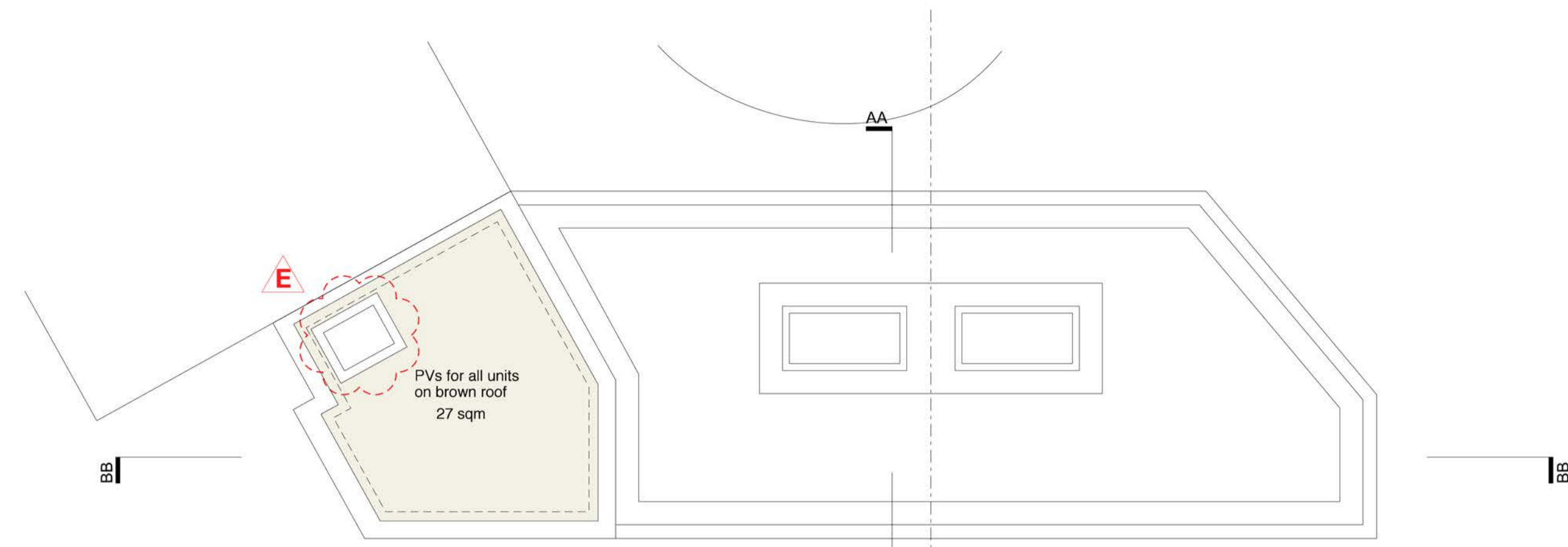


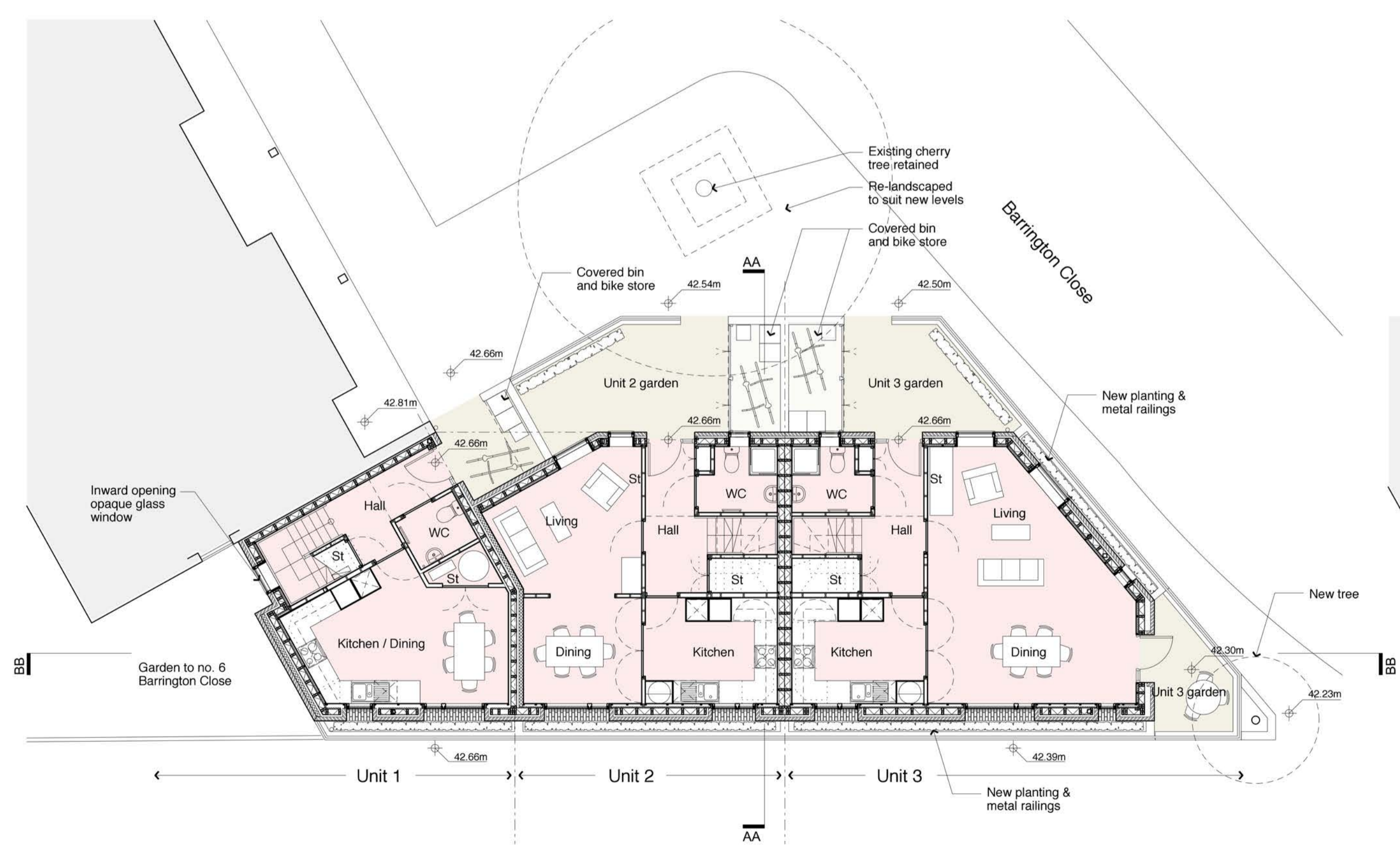
**Accommodation:**  
 Unit 1  
 1 no 3B 4P four storey house  
 Gross internal area = 114m<sup>2</sup>  
 Unit 2  
 1 no 3B 5P two storey family house  
 Gross internal area = 94m<sup>2</sup>  
 Unit 3  
 1 no 3B 4P two storey family house  
 Gross internal area = 104m<sup>2</sup>



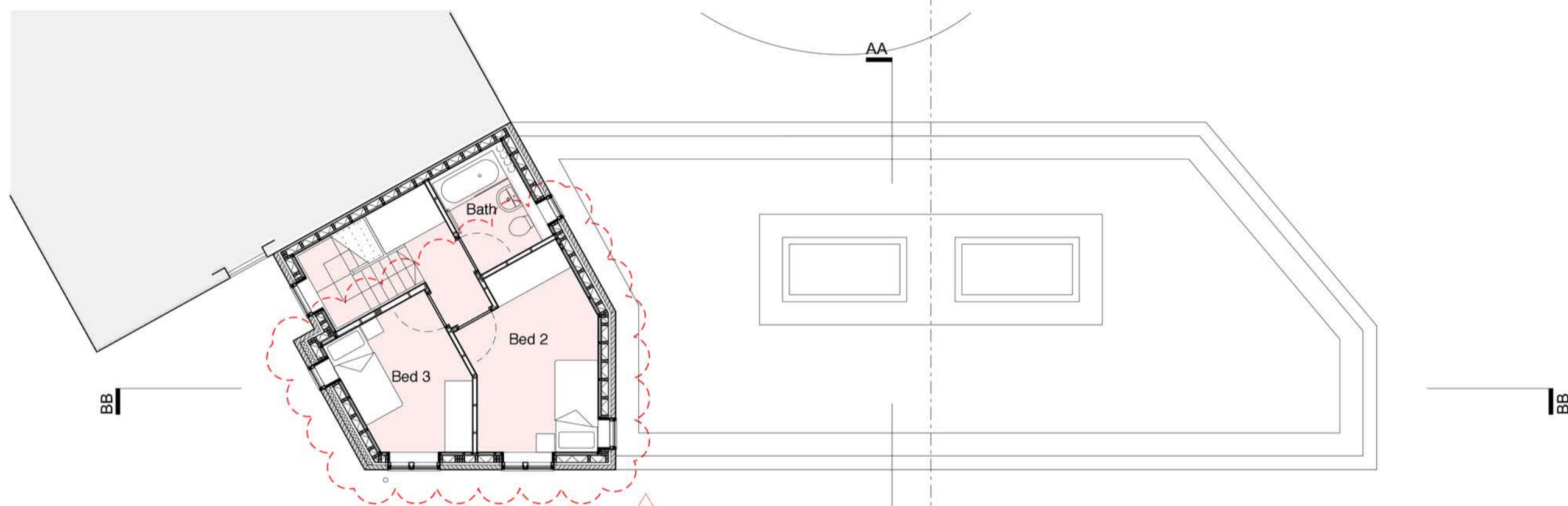
**First Floor Plan**



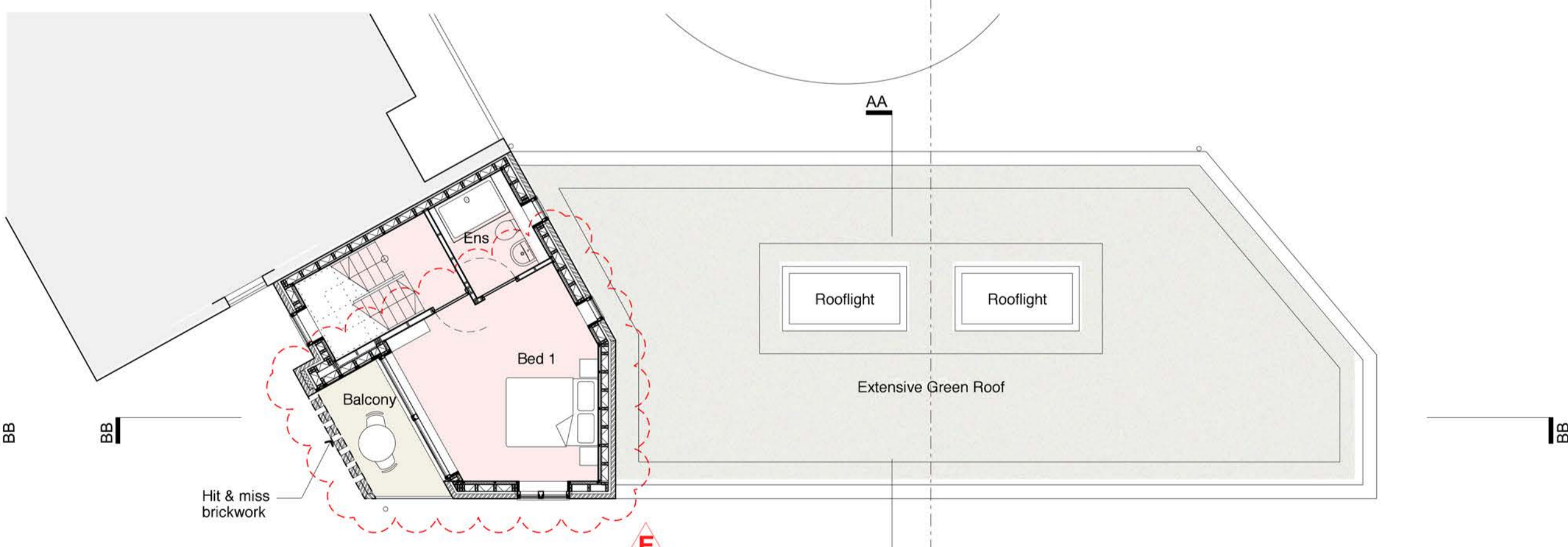
**Roof Plan**



**Ground Floor Plan**



**Third Floor Plan**



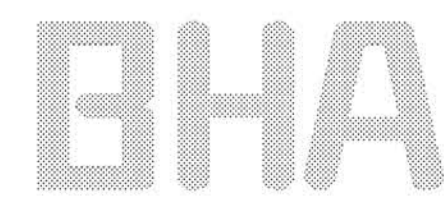
**Second Floor Plan**

E	07.05.15	NI	CB
For Planning Amendment - Minor amendments to fenestration & internal layouts; bedroom/balcony locations to unit 1 amended; revisions highlighted			
D	16.04.15	TS	CB
Planning - Minor amendments to fenestration & internal layouts; bedroom/balcony locations to unit 1 amended.			
C	04.04.14	TS	CB
Issued for Planning			
B	21.03.14	TS	CB
Notes added; Unit 1 revised			
A	18.03.14	TS	CB
Revised following Pre-Planning comments & Tenants Consultation			
Revision	Date	By	Checked

For Planning

**Site 3 - Barrington & Lamble Boiler House Proposed Plans**  
 Barrington & Lamble Infill Sites  
**1381\_P30\_E**

Scale: 1:100 at A1  
 1:200 at A3  
 Date: 28/11/2013  
 Drawn: TS



**BURD HAWARD ARCHITECTS LTD**  
 United House, North Road  
 London N7 9DP  
 T +44 20 7257 9815  
 E studio@burdward.com

