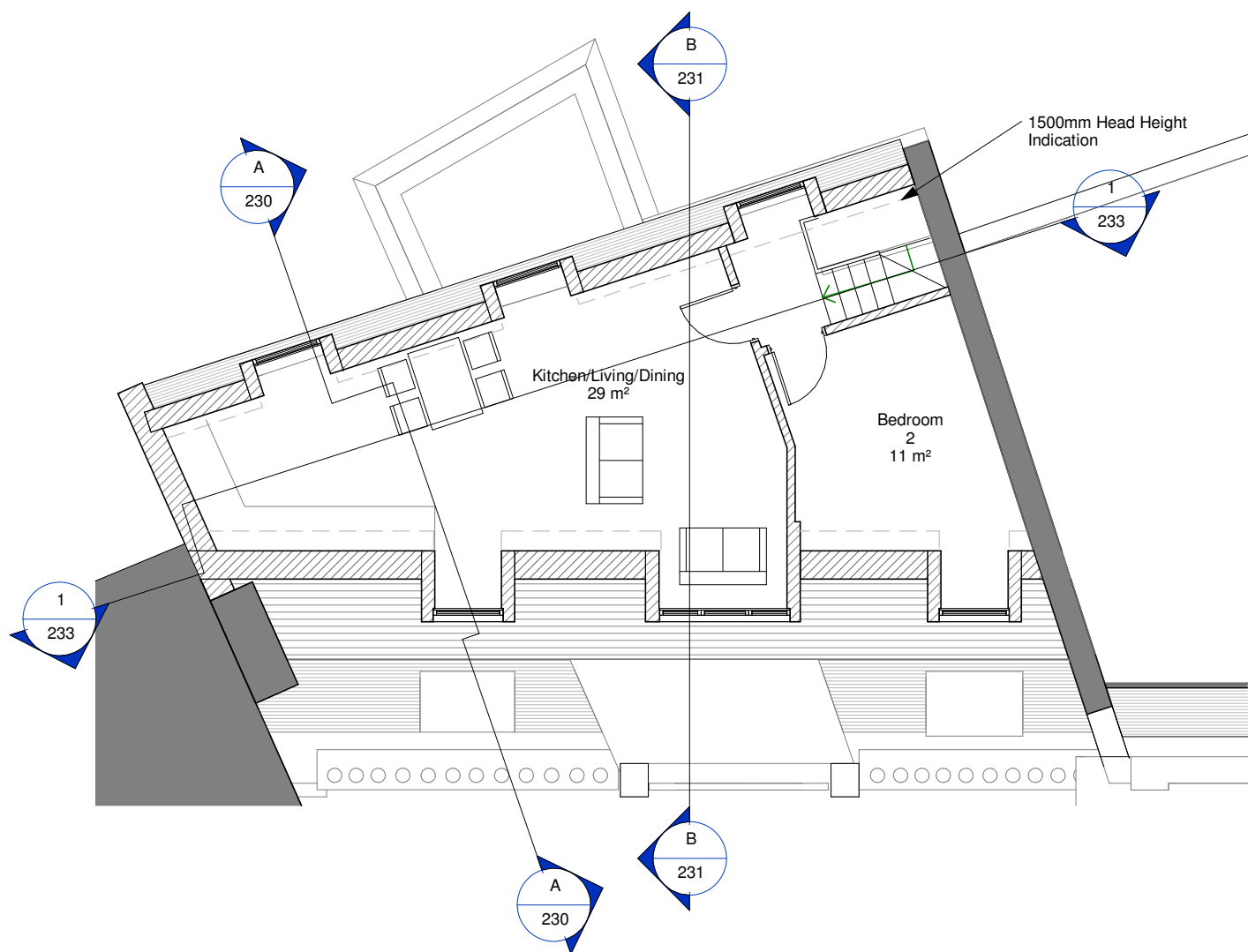
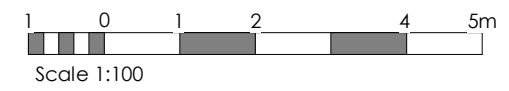
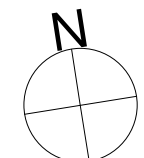


NOTES

- Do not scale from this drawing, except for planning purposes.
- Check all dimensions on site.
- Subject to survey.
- Subject to site inspection.
- Site boundary lines are indicative only.



1 04 - Proposed Fourth Floor
1 : 100



| A | 17.04.2015 | EMF | Planning Issue_Sections |
|-----|------------|-----|-------------------------|
| - | 13.03.2015 | CG | Planning Issue |
| Rev | Date | By | Description |

Revision Schedule

project
The Old Nick, 20- 22 Sandland Street
London, WC1R 4PZ

title
Proposed Fourth Floor Plan

| | |
|-----------------------------------|-----------------------|
| drawing status Planning | |
| contract no. 000 | scale 1 : 100 @ A3 |
| client ref. --- | date 11/12/14 |
| drawn by emf | checked by CG |
| project no. P14-258 | drawing number 214 |
| | revision A |

Child Graddon Lewis
architects & designers

Studio1
155 Commercial Street
Spitalfields
London E1 6BJ

T: +44 (0) 20 7539 1200
F: +44 (0) 20 7539 1201
E: hg@cgluk.com
www.cgluk.com