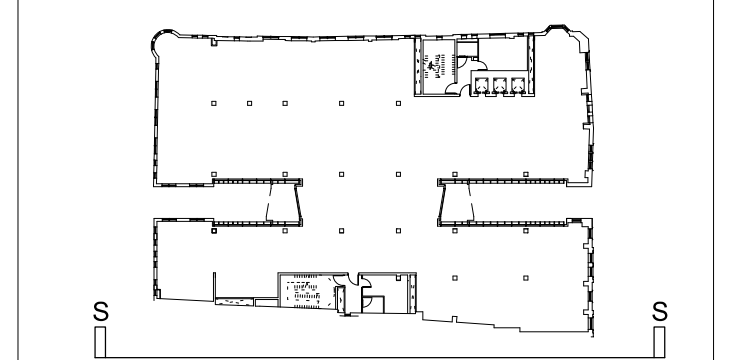


Notes:



- ① EXISTING BRICKWORK RETAINED AND CLEANED C40
- ② NEW STONE CLADDING H51110
- ③ NEW TERRACOTTA FINS H11130A
- ④ NEW METAL VERTICAL REVEAL H43110
- ⑤ NEW METAL CLADDING H43110
- ⑥ NEW SIGNAGE (SHOWN INDICATIVE SEE GENERAL NOTE)
- ⑦ NEW GLASS FACADE H11110A; H11110B
- ⑧ NEW CLEAR GLAZED BALUSTRADE L30560A WITH SIS HANDRAIL L30570A
- ⑨ NEW CLEAR GLASS AUTOMATIC SLIDING DOORS L20490A
- ⑩ NEW DORMER WINDOWS L103317
- ⑪ NEW METAL LOUVRES L10850B; L10850D
- ⑫ NEW METAL ROOF H74111
- ⑬ NEW TERRACE DECKING Q55110A
- ⑭ NEW INVERTED BROWN ROOF Q37130
- ⑮ NEW DOUBLE GLAZED TIMBER SASH REPLACEMENT WINDOWS L10210A
- ⑯ NEW CAPPED GLASS FACADE H11111; H11111A
- ⑰ NEW MIRROR FINISH METAL PANNELLING H43110 TO SHADOW GAP REVEAL
- ⑱ NEW GLAZED SINGLE DOOR H111135A
- ⑲ NEW ACOUSTIC LOUVRES TO PLANT ENCLOSURE L10650C
- ⑳ NEW ALUMINIUM WINDOW L10332A
- ㉑ EXISTING STONE DETAILS RETAINED AND CLEANED C40
- ㉒ EXISTING WINDOWS REPLACED WITH LOUVRES L10330D
- ㉓ NEW METAL PORTAL FRAME Z111111; Z31 FOR RPC FINISH
- ㉔ NEW FEATURE LIGHT REFER TO LIGHTING CONSULTANTS SPECIFICATIONS
- ㉕ NEW DECORATIVE METAL ELEMENTS Z111110; Z31 FOR RPC FINISH
- ㉖ RETAIL SIGNAGE ZONE (SEE GENERAL NOTE)
- ㉗ DROP DOWN BALUSTRADE (FOR SERVICE ACCESS) M41135A
- ㉘ NEW METAL SECURITY GATE L20620
- ㉙ (OMITTED)
- ㉚ NEW PERFORATED METAL EXTRACT PANEL H31122
- ㉛ NEW CAPLESS FLUSH SLOT WINDOW H11110C
- ㉜ NEW PAINT FINISH TO EXISTING SHOPFRONTS M60
- ㉝ NEW SPANDEL PANEL
- ㉞ NEW INVERTED PAVED ROOF J31130A
- ㉟ NEW SOLID METAL DOOR L20480C
- ㊱ NEW BRICK TO MATCH EXISTING F101110
- ㊲ NEW TRANSLUCENT GLAZING H11111A
- ㊳ NEW CAPPED GLASS FACADE H11111A
- ㊴ NEW STONE CORNICES AND FEATURES TO MATCH EXISTING F10725A; F10765A
- ㊵ NEW MICRO LOUVRES L10850A
- ㊶ STRUCTURAL STEEL FRAME SYSTEM G101150
- ㊷ INSULATION P10
- ㊸ ROOF ACCESS HATCH
- ㊹ PULL DOWN LOFT LADDER L30422A
- ㊺ RIVETTING SARKING A109P20 (REFER TO FLIRC SERIES)
- ㊻ BLOCKWORK F10
- ㊼ SECONDARY STEEL WORK G101152
- ㊽ NEW ZINC CAPPING H74311
- ㊾ NEW ZINC GUTTER H74210A
- ㊿ INSECT MESH H74111
- 1 VCL P10310
- 2 BREATHER MEMBRANE P10320A
- 3 WEEP HOLE F30132
- 4 FULL CAVITY INSULATION F30150
- 5 FIXING TIES F30233
- 6 BRICK SUPPORT SYSTEM F30285
- 7 CAVITY TRAY F30370A
- 8 ROLLER BLIND BOX OFFICE N10240A BLINDS PART OF TENANT FIT OUT
- 9 MAIL BOX N10280
- 10 SHADOW GAP PRESSING H74111
- 11 NEW GLAZING TO LINK BRIDGE AND RESIDENTIAL ENTRANCE H11110D
- 12 NEW FIRE CURTAIN L20610A
- 13 ROLLER BLIND RESIDENTIAL N10240
- 14 NATURAL STONE COVERING M40115A; M40115B
- 15 SHADOW BOX DETAIL H11110C; H11111A
- 16 CERAMIC FLOOR TILES M40110C
- 17 TIMBER PANNELLING K13160A
- 18 OVERSIZED TERRACOTTA COVER CAP H11111
- 19 PERFORATED METAL H51122
- 20 NEW CAPLESS FLUSH SLOT WINDOW H11110F
- 21 NEW DOUBLE GLAZED TIMBER CASEMENT REPLACEMENT WINDOWS L10210B
- 22 APPLY BETWEEN PRIMARY STEELS

GENERAL NOTES:

- GENERAL BUILDING SIGNAGE SHOWN IS INDICATIVE ONLY
- RETAIL SIGNAGE ZONE SHOWN FOR INFORMATION. FUTURE SIGNAGE PART OF SEPARATE FUTURE SIGNAGE APPLICATION
- WINDOW NUMBER SYSTEM:

WINDOW	FLOOR NUMBER	X	Y	NUMBER
C4	20.02.15	PLANNING ISSUE		
C3	02.10.14	NMA PLANNING ISSUE		
C2	15.05.14	NMA PLANNING ISSUE		
C1	27.01.14	CONSTRUCTION ISSUE		
T1	16.08.13	TENDER ISSUE		
A	05.07.13	STAGE E ISSUE		
-	19.04.13	STAGE D ISSUE		

BOGHOUSE SITE * STAR YARD * 79 - 86 CHANCERY LANE * CHANCERY LANE * 24 - 32 CHANCERY LANE *

ORMS
 Architecture Design
 1 Oliver's Yard, 55-71 City Road, London, EC1Y 1HQ
 T 0207 833 8533 F 0207 837 7575
 E orms@orms.co.uk

Project 79 - 86 CHANCERY LANE
 Drawing title PROPOSED SOUTH ELEVATION

Scale 1:100 @ A1 / 1:200 @ A3 Drwg. No. 1966 GE 04
 Date JANUARY 2013 Rev. C4

Status For information For tender For construction
 Do not scale. All dimensions to be confirmed on site. Information contained in this drawing is the sole copyright of ORMS Designers & Architects Ltd. and is not to be reproduced without permission.