

# 38 Heath Drive, Hampstead, London, NW3 7SD

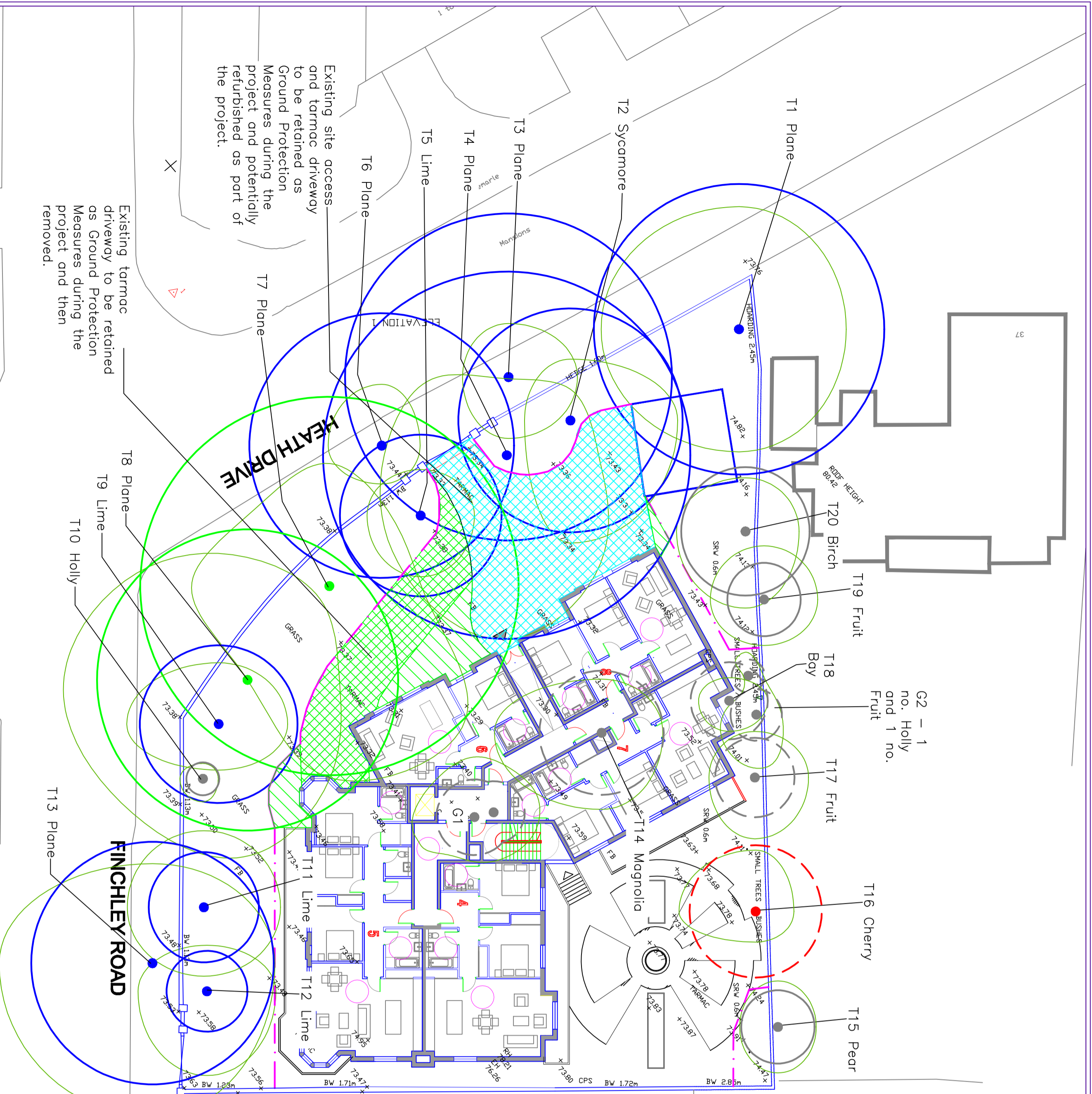
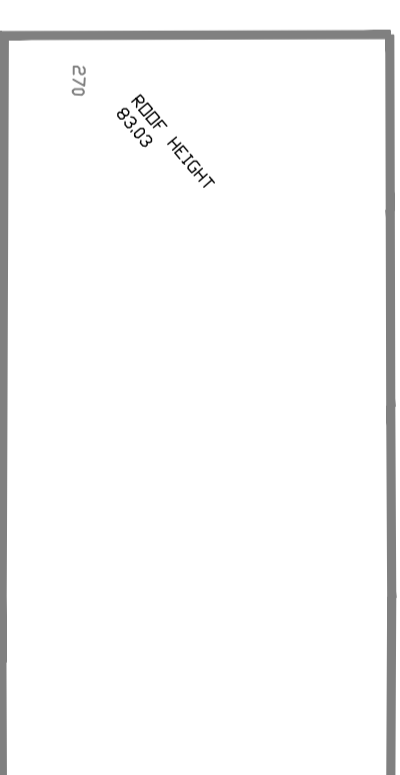
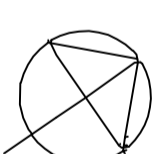
**Drawing Title:**  
Tree Protection Plan

**Drawing No:** TPP/38HDHL/010 A  
**Client:** Zen Developments  
**Scale:** 1:200 @ A2  
**Drawn By:** drc  
**Date:** November 2013

## DCCLA

David Clarke BSc (Hons) PD Arb (RS) CHU H Arbor A  
Offices in Hertfordshire and Warwickshire  
Head Office: Willowbrook House, Church Lane,  
Fillingley, Warwickshire, CV7 9EW  
T: (07775) 650 835 or (01676) 541 833  
email: info@dccla.co.uk

0 5 10  
This drawing may not be reproduced without written consent. All copyrights reserved.  
Based on drawings supplied by M R Partnership, London  
The original of this drawing was produced in colour - a monochrome copy should not be relied upon.  
The position of off site trees is indicative only as access was restricted during the Arboricultural Survey.



Existing site access and tarmac driveway to be retained as Ground Protection Measures during the project and potentially refurbished as part of the project.

Existing tarmac driveway to be retained as Ground Protection Measures during the project and then removed.

ELEVATION 2

KEY	
	Tree Locations and Root Protection Areas
	Tree canopy spreads
	Trees proposed to be removed.
	Tree Protective Fencing
	Ground Protection Measures - existing materials to be retained
	Ground Protection Measures - additional materials to be laid
	Designated Access Routes and refurbished driveway
BS 5837 Category Grading (see Appendix A)	
	Category A
	Category B
	Category C
	Category U