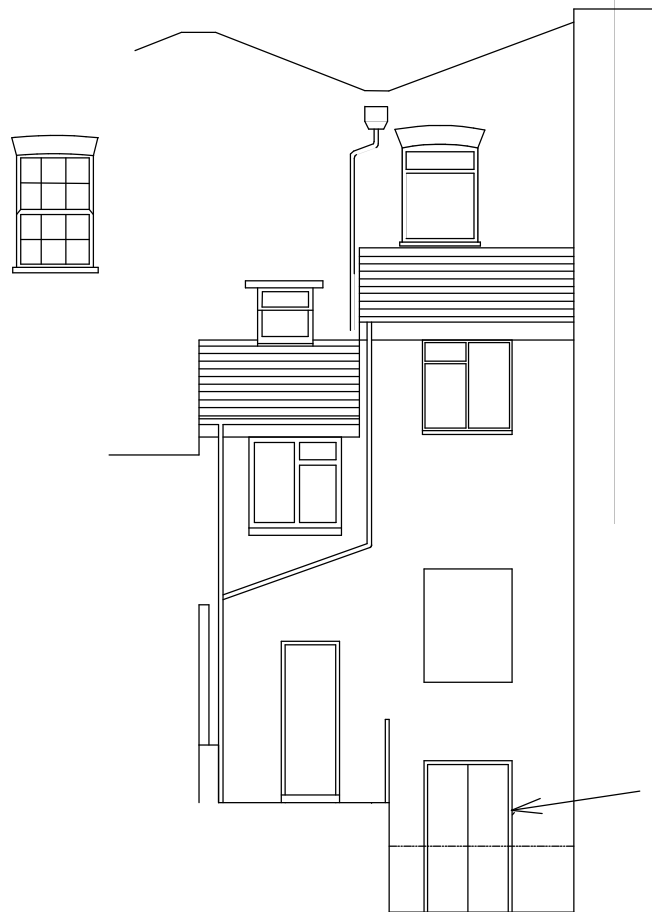
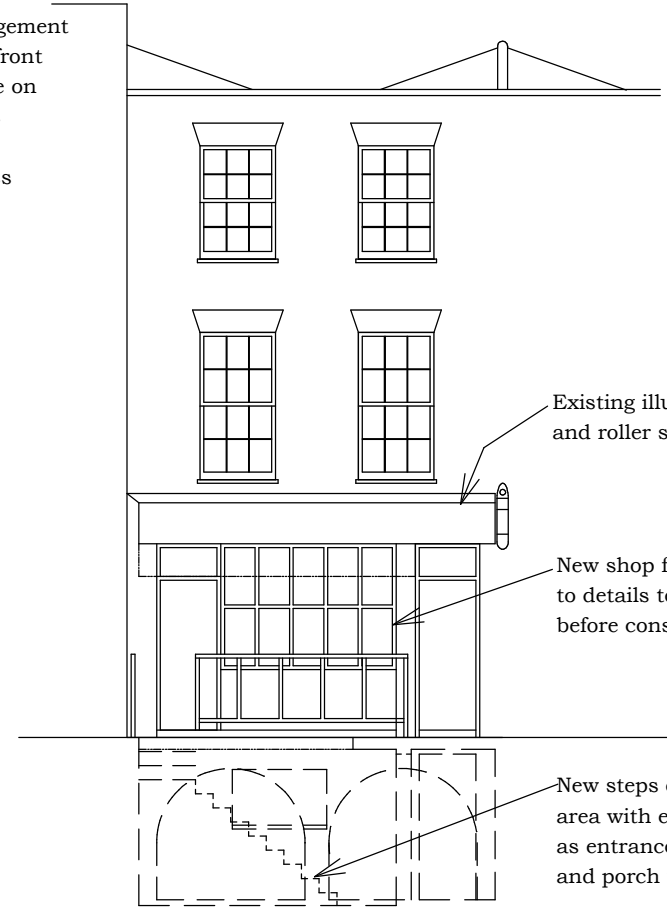


Additional notes re shop front 8th May 2015:
Replacement shop front and fascia in painted
and to respect and reflect the existing at
adjacent No. 255 noted as of merit in the
Conservation Area Statement (p14).
As shown in outline at 253 the arrangement
will be more symmetrical having the front
door to the retained upper maisonette on
the right mirrored by a plain panel as
secondary escape from the new lower
maisonette over the head of the access
stairs to the left.



West rear elevation
to garden



East front elevation
to Royal College Street

