

IDEAL HOME

APRIL, 1951 TWO SHILLINGS

A large old house converted into a number of smaller homes . . . Ladywell, a mansion with its pair of Elizabethan cottages and outbuildings, was a small estate in rural Hampstead at the beginning of the nineteenth century

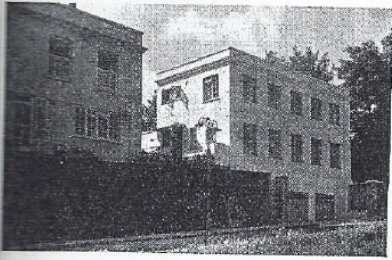
Compact and comfortable, the interior of one of the cottages: showing how the lounge, dining-room and entrance hall are related. The front view is shown in the top right illustration.

***Conversion by
A. Dinerman, B.Sc.***

48



Ladywell House itself, on extreme right of the picture, has been converted into flats, known as Ladywell Court. The pair of semi-detached cottages began life as the barn.



Originally outbuildings, this became Ladywell Lodge on conversion to a single house; beneath are three garages. On the left is The Grey House, which has been rebuilt from the bombed Elizabethan cottages.

