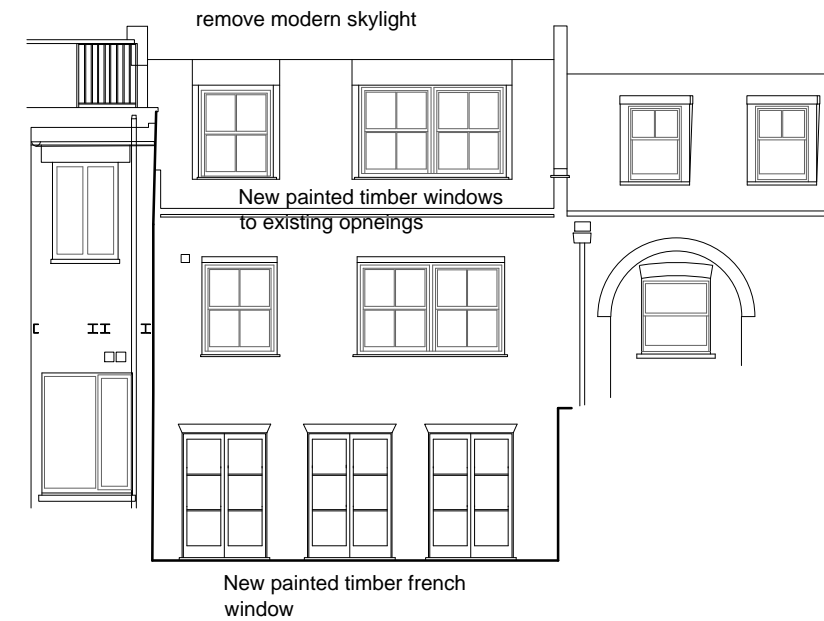
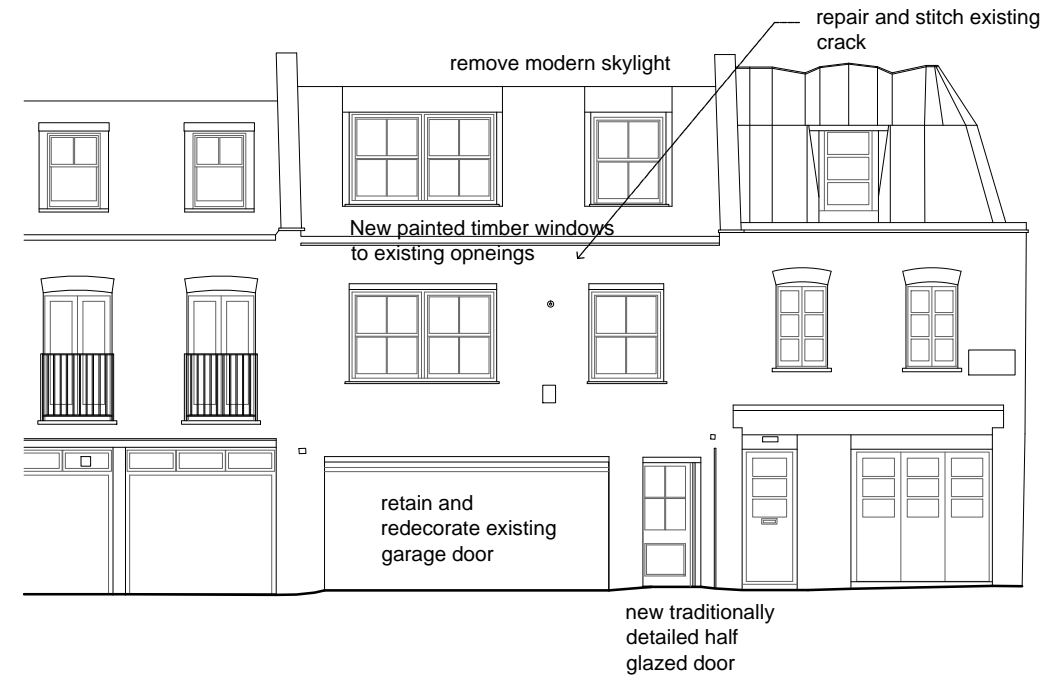


notes on windows in Mews

- remove existing boarding and replace with lead
- remove existing modern metal windows and replace with new sash windows with traditionally detailed painted timber double glazed windows



General Notes on Repairs:

Brickwork

- Carefully rake out damaged joints and re-point where necessary in matching mortar.
- Carefully brush clean brickwork to remove moss and staining where necessary.
- Replace mismatching brickwork with second hand bricks to match existing - sample must be approved by Architect
- Soot down any repairs to match existing.

Stone

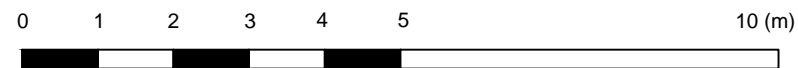
- Carefully brush clean stonework - remove moss and stain and repoint as necessary.

Leadwork

- Carefully investigate roof leadwork once safe access is established, and repair/replace as necessary all in accordance with Lead Sheet Association's recommendations.

Drainage

- Remove redundant services.
- Repair/replace damaged pipes as necessary.
- Clear all the blockages
- All the external rainwater and soil vent pipes are to be replaced in cast iron to match existing.
- All internal soil vent pipes must be adequately sound insulated and properly concealed, and to follow existing service route where possible.



No.	NOTES (STATUS: F. FEASIBILITY S. SKETCH DESIGN P. PLANNING B. BUILDING CONTROL D. DESIGN DEV / PRELIM M. MEASUREMENT T. TENDER C. CONSTRUCTION R. RECORD)	Rev	Date	Dwn	Auth	REVISIONS
1	For construction use only if status 'C' and checked against current revision					
2	All dimensions to be checked on site by contractor					
3	Do not scale from this drawing	D	12/03/2015	ERH	ACS	Garden level lowered slightly.
4	Unless otherwise indicated all dimensions are in millimetres	C	10/03/2014	SZP	ACS	Ground floor Mews rear wall aligned with Mews walls above.
		B	05/09/2013	JXA	ACS	Planning Issue
		A	29/08/2013	JXA	ACS	Adding Notes
		-	01/08/2013	AXT	ACS	Initial Issue

DONALD INSALL ASSOCIATES LIMITED

CHARTERED ARCHITECTS
PLANNING CONSULTANTS

12 Devonshire Street London W1G 7AB Tel: 020 7245 9888 Email: london@insall-architects.co.uk

Job 27 John Street & 21 John's Mews

Title Proposed Front & Rear Mews Elevation

Job	JS27.02	Status	P
No	2202	Rev	D
Scale (A3)	1:	1	2
		5	