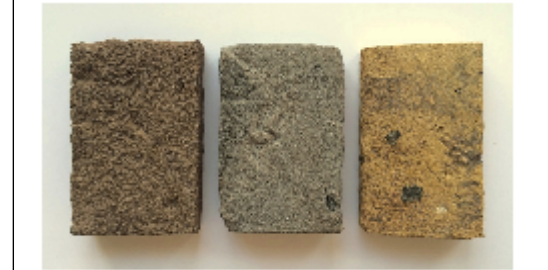


NOTES

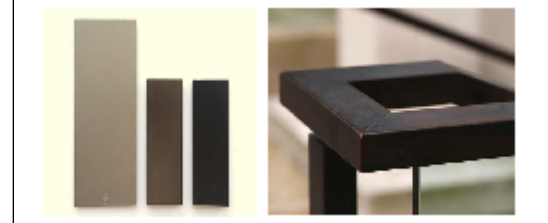
Material Notes



Integrated Soft Landscaping throughout. Bio-Diverse & Sedum roofs. Areas of relief in the brick work and changes in bond & colour



New facing brick in complementary tone and texture utilised with localised areas of re-used London stock brick.



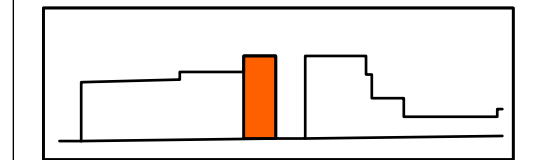
Metallic finishes used in contrast to the brick texture. Anodised Aluminium windows. Darker tonal colours to complement the brick.



Individual & shared residential entrances differentiated. Brick & Buff sandstone paving.



Open space and commercial entrances. Mid & warm grey granite paving.



B	Revs	Height Amended	Comments	10/02/15	PP	CHK

STATUS

PLANNING

Job 277a Grays Inn Road

Title Elevation Detail St Chads Street Front Elevation

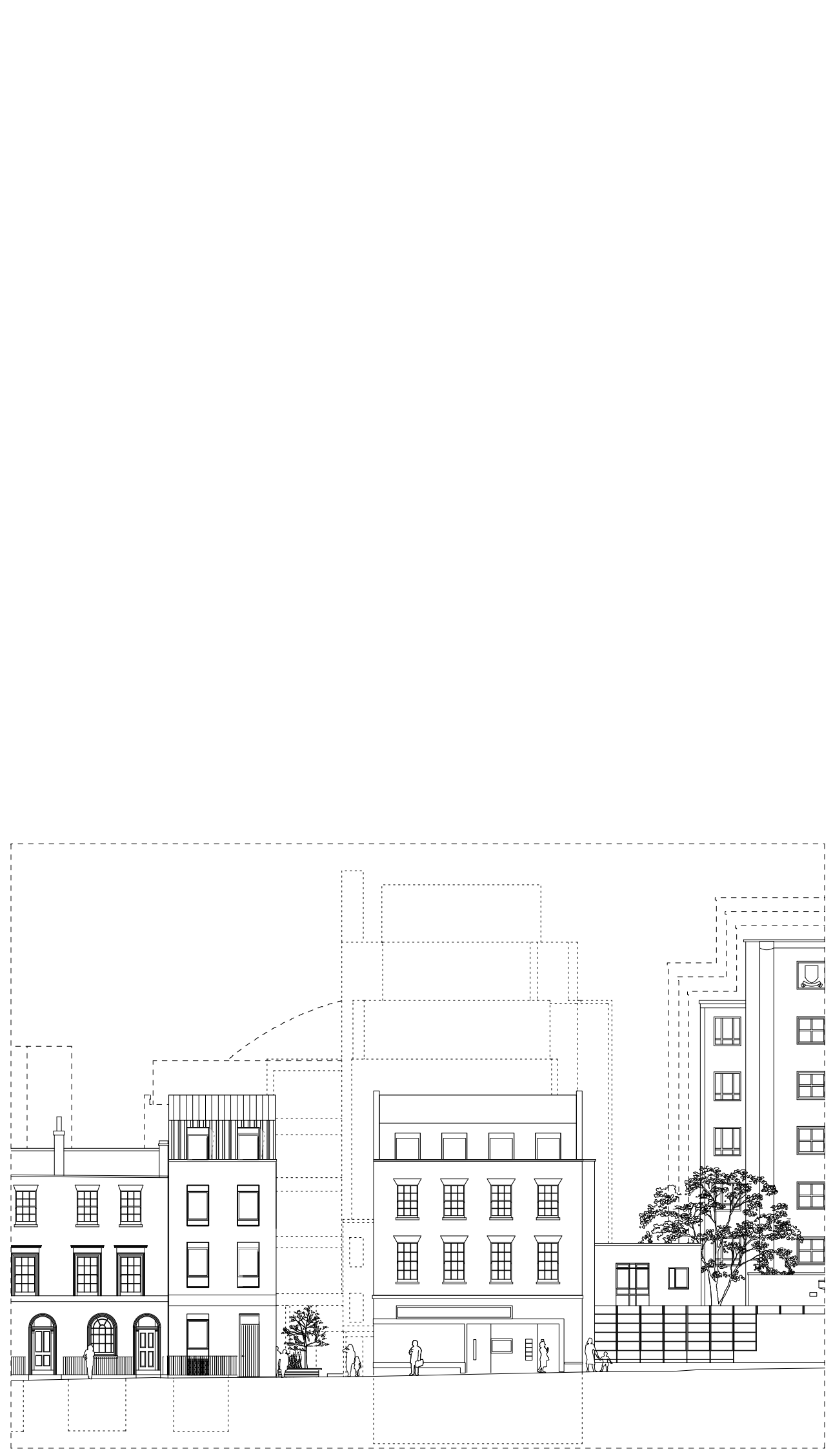
Date February 2015

Scale 1:50 @ A3

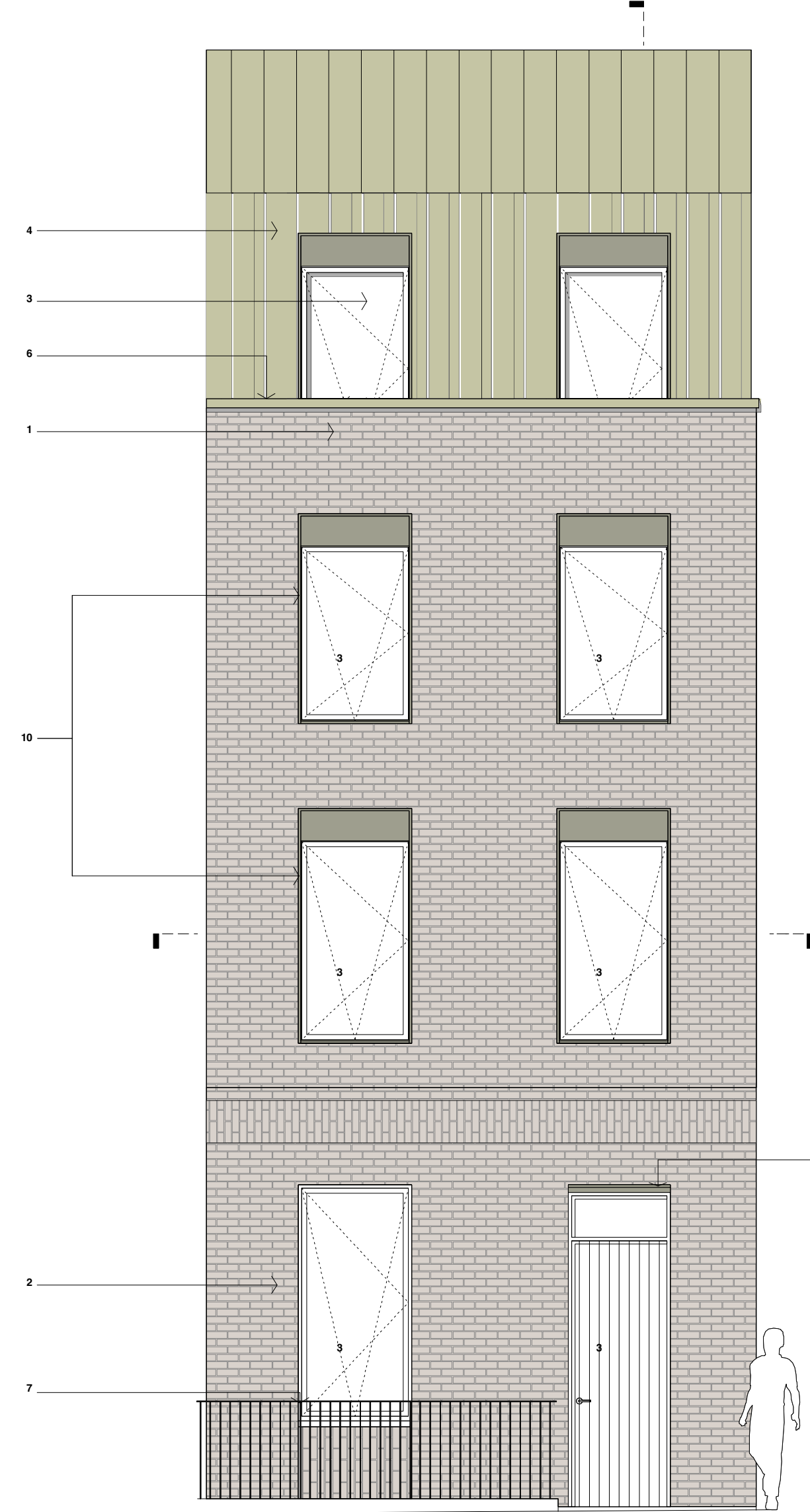
Drawn PP

Waugh Thistleton Architects Ltd
 74 Paul Street
 London EC2A 4NA
 Telephone +44 (0)20 7613 5727
 Fax +44 (0)20 7613 5749
 email/web waughthistleton.com

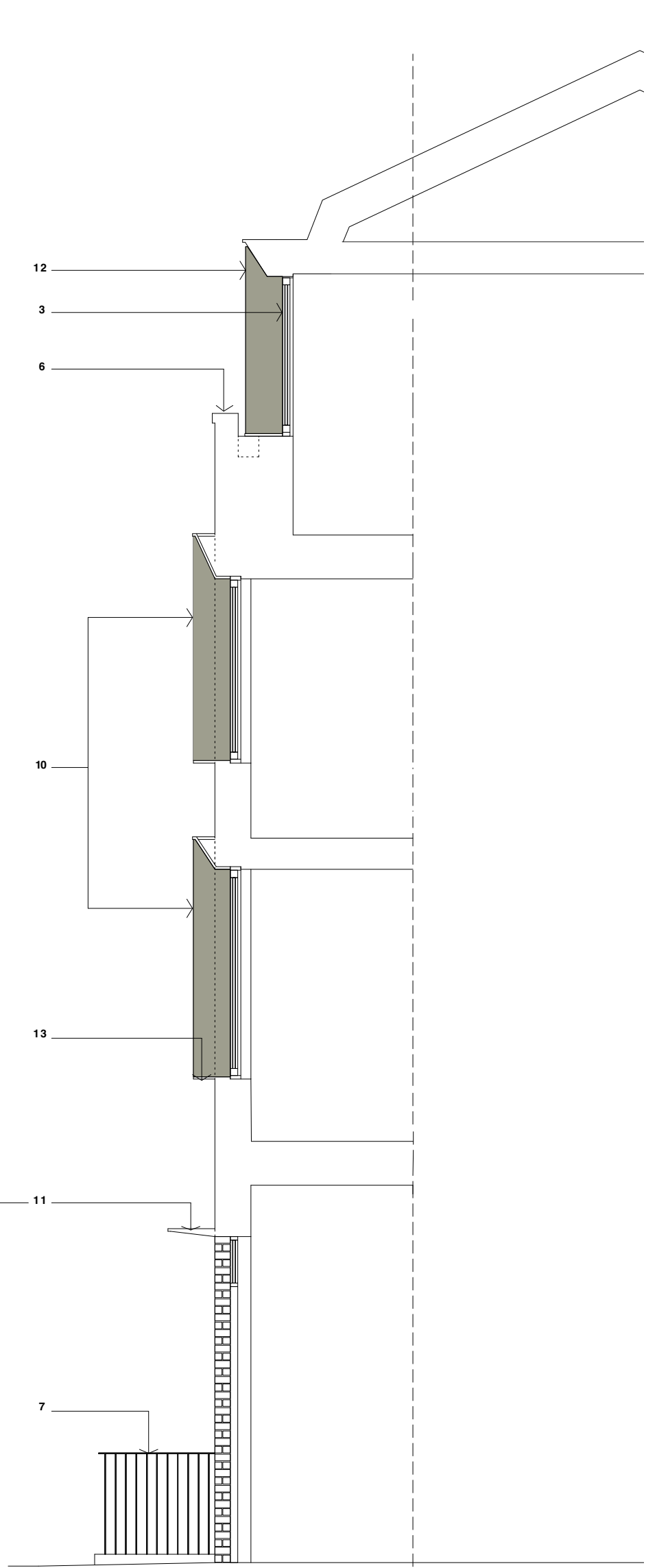
126-1508
 Waugh Thistleton architects



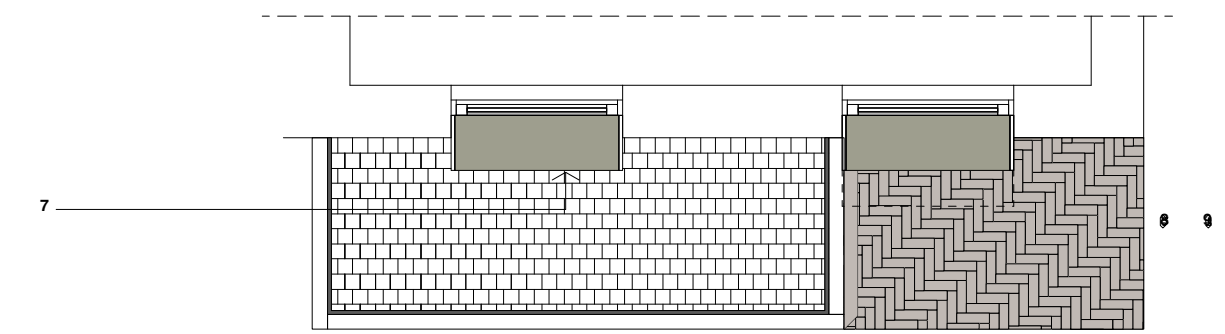
Extract from 1401 (Elevation to St Chad's Street)



Block E Front Elevation



Section



Plan

- NOTES:
- Proposed new facing brick TYPE 1. Stock brick in running bond with flush mortar joints generally. Standard size, colour and type to be agreed.
 - Proposed new facing brick TYPE 2. Stock brick in running bond with flush mortar joints generally. Standard size, colour and type to be agreed.
 - Anodised aluminium thermally broken double glazed windows and doors
 - Anodised aluminium cladding
 - Concrete fascia / canopy
 - Concrete capping stone
 - Painted steel balcony / balustrade
 - Paving TYPE 1 - Individual Entrance
 - Paving TYPE 3 - Open Space
 - Projecting anodised aluminium window reveal
 - Projecting anodised aluminium canopy
 - Projecting anodised aluminium dormer cheeks
 - Projecting anodised aluminium sill