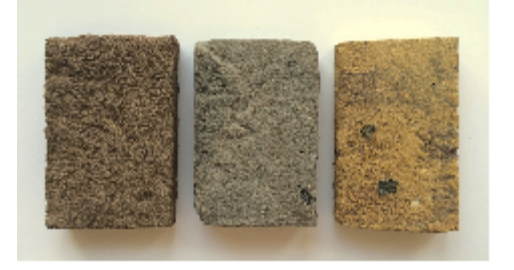


This drawing is prepared for the purposes of a planning application and to show design intent only. The information contained herein must not be used for costing, construction, engineering or any other purposes without agreement in writing from Waugh Thistleton Architects Ltd.

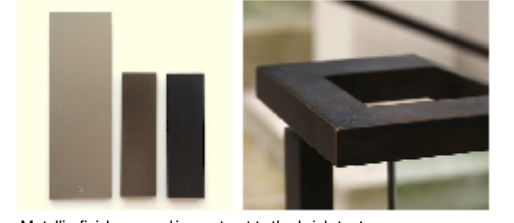
NOTES
Material Notes



Integrated Soft Landscaping throughout. Bio-Diverse & Sedum roofs. Areas of relief in the brick work and change in bond & colour



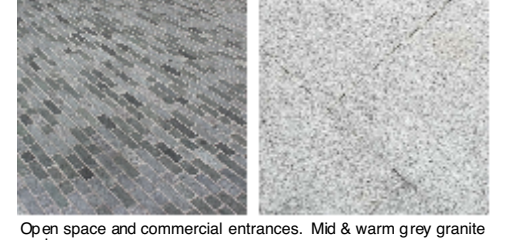
New facing brick in complementary tone and texture utilised with localised areas of re-used London stock brick.



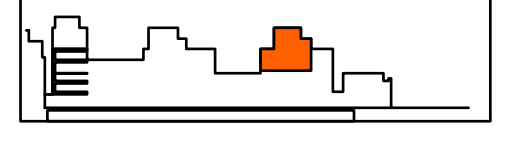
Metallic finishes used in contrast to the brick texture. Anodised Aluminium windows. Darker tonal colours to complement the brick.



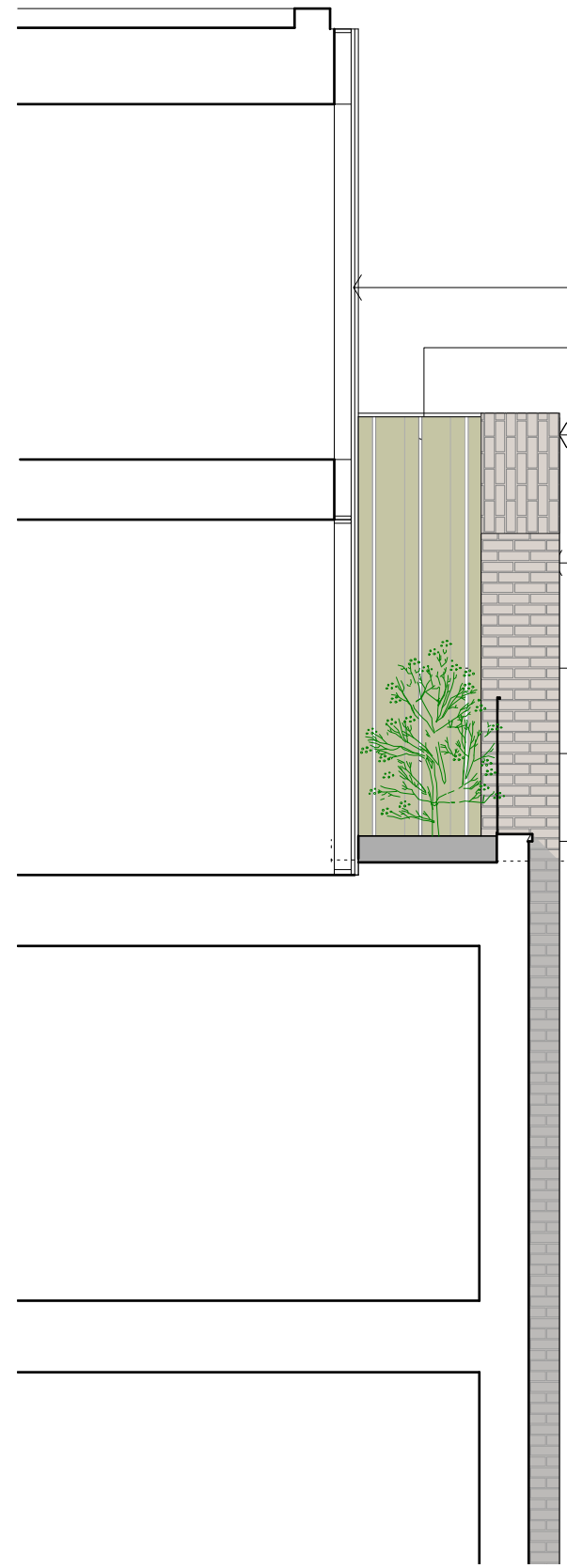
Individual & shared residential entrances differentiated. Brick & Buff sandstone paving.



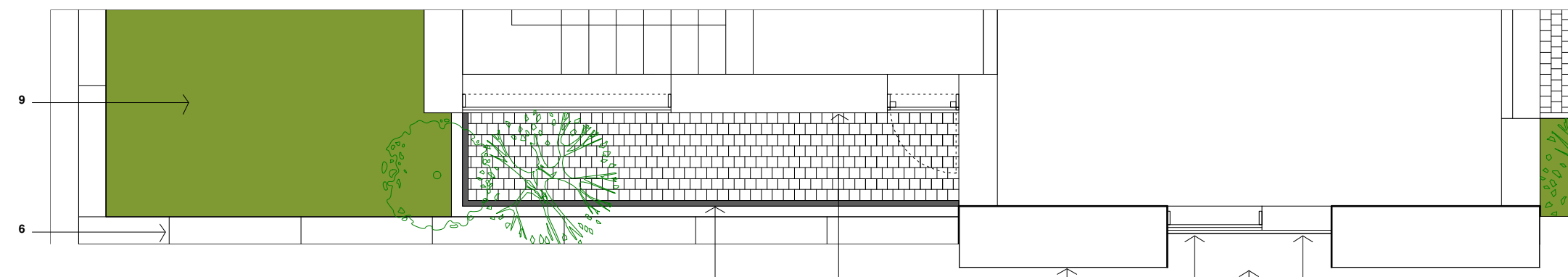
Open space and commercial entrances. Mid & warm grey granite paving.



EXTRACT FROM ELEVATION D (UPPER FLOORS)



PARTIAL SECTION FACING NORTH



EXTRACT FROM FIFTH FLOOR PLAN

- NOTES:
- Proposed new facing brick TYPE 1. Stock brick in running bond with flush mortar joints generally. Standard size, colour and type to be agreed.
 - Proposed new facing brick TYPE 2. Stock brick in running bond with flush mortar joints generally. Standard size, colour and type to be agreed.
 - Anodised aluminium thermally broken double glazed windows and doors
 - Anodised aluminium cladding
 - Concrete fascia / canopy
 - Concrete capping stone
 - Painted steel balcony / balustrade
 - Raised planting beds.
 - Bio-Diverse green roof
 - Paving TYPE 1 - Individual Entrance
 - Paving TYPE 2 - Communal Entrance
 - Paving TYPE 3 - Open Space
 - Glazed balustrade
 - Fixed glazing

A	REV	Comments	10/02/15	PP
			DATE	CHK

STATUS

PLANNING

Job 277a Grays Inn Road

Title Elevation Detail Extract
From Elevation D
Upper Floors

Date 05 May 2011

Scale 1:50 @ A2

Drawn PP

129-1504

Waugh Thistleton Architects Ltd
74 Paul Street
London EC2A 4NA
Telephone +44 (0)20 7613 5727
Fax +44 (0)20 7613 5749
email/web waughthistleton.com

Waugh Thistleton architects