

This drawing is prepared for the purposes of a planning application and to show design intent only. The information contained herein must not be used for costing, construction, engineering or any other purposes without agreement in writing from Waugh Thistleton Architects Ltd.

NOTES

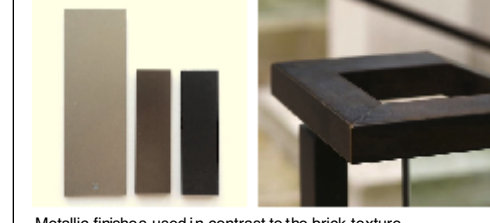
Material Notes



Integrated Soft Landscaping throughout. Bio-Diverse & Sedum roofs.
Areas of relief in the brick work and changes in bond & colour.



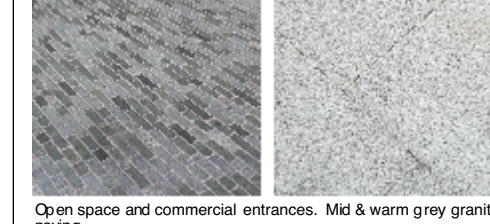
New facing brick in complementary tones and texture utilised with localised areas of re-used London stock brick.



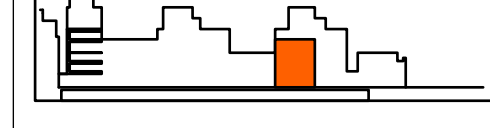
Metallic finishes used in contrast to the brick texture. Anodised Aluminium windows. Darker tones to complement the brick.



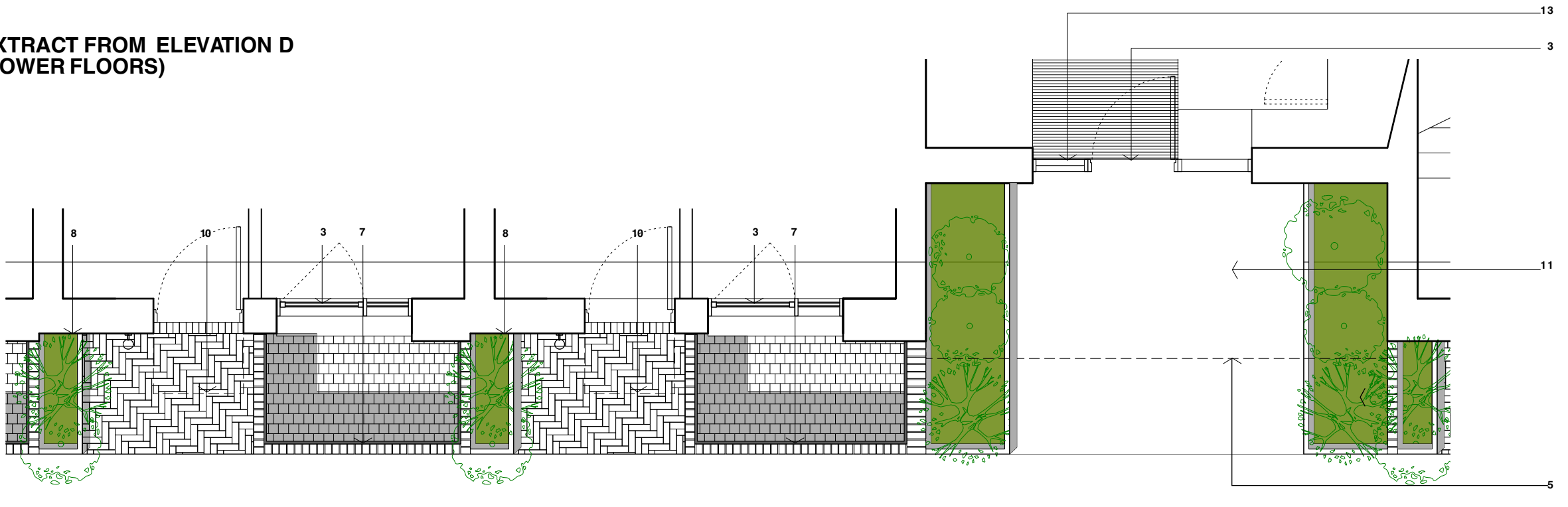
Individual & shared residential entrances differentiated. Brick & Buff sandstone paving.



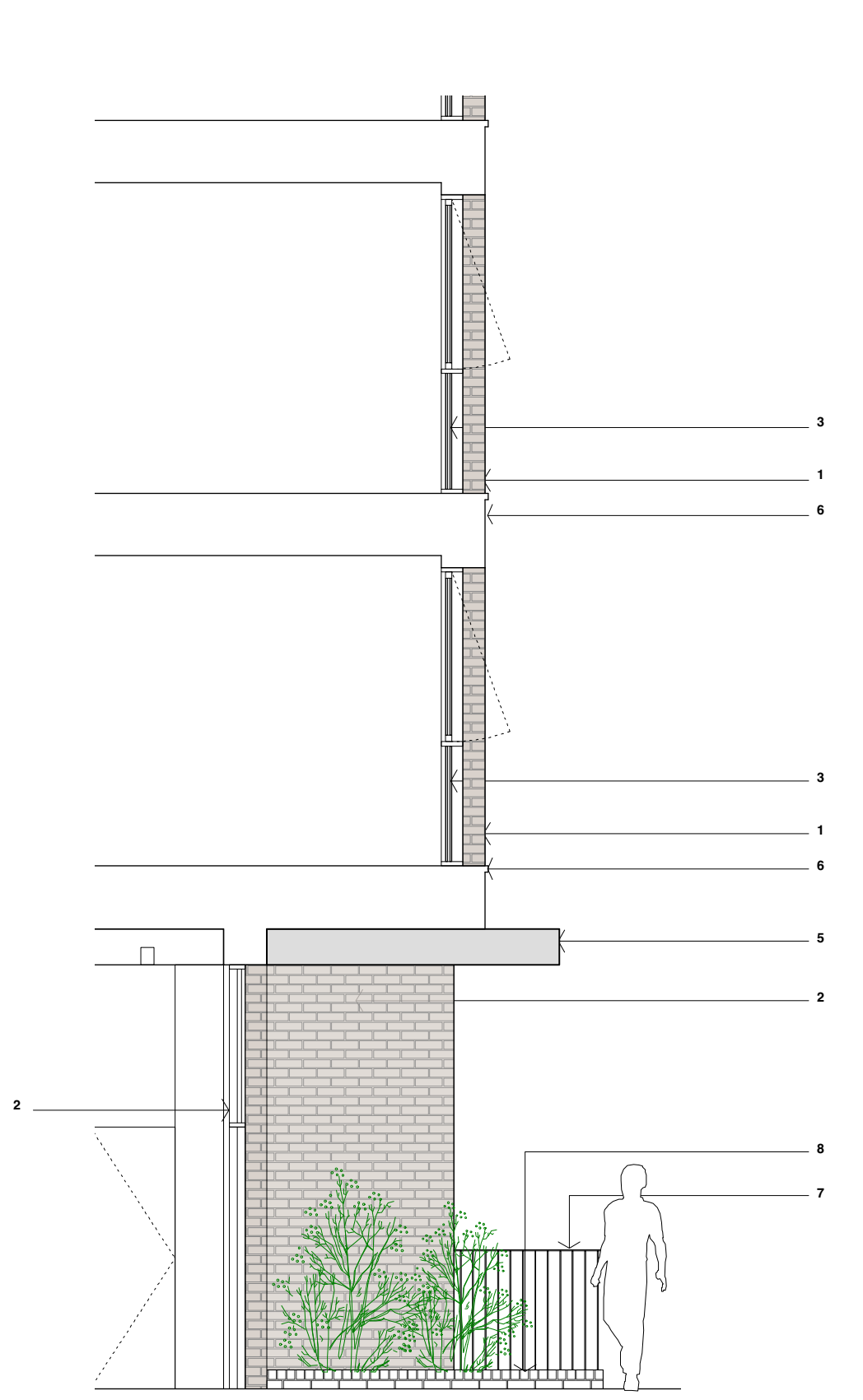
Open space and commercial entrances. Mid & warm grey granite paving.



EXTRACT FROM ELEVATION D
(LOWER FLOORS)



EXTRACT FROM UPPER GROUND FLOOR PLAN



PARTIAL SECTION FACING NORTH

NOTES:

- Proposed new facing brick TYPE 1. Stock brick in running bond with flush mortar joints generally. Standard size, colour and type to be agreed.
- Proposed new facing brick TYPE 2. Stock brick in running bond with flush mortar joints generally. Standard size, colour and type to be agreed.
- Anodised aluminium thermally broken double glazed windows and doors
- Anodised aluminium cladding
- Concrete fascia / canopy
- Concrete capping stone
- Painted steel balcony / balustrade
- Raised planting beds.
- Bio-Diverse green roof
- Paving TYPE 1 - Individual Entrance
- Paving TYPE 2 - Communal Entrance
- Paving TYPE 3 - Open Space
- Fixed glass panel
- Lightwell

A	Height Amended	10/02/15	PP
REV	COMMENTS	DATE	CHK

STATUS

PLANNING

Job 277a Grays Inn Road
Title Elevation Detail Extract from Elevation D Residential Entrances
Date February 2015
Scale 1:50 @ A2
Drawn PP

126-1503

Waugh Thistleton Architects Ltd
74 Paul Street
London EC2A 4NA
Telephone +44 (0)20 7613 5727
Fax +44 (0)20 7613 5749
email/web waughthistleton.com

Waugh Thistleton architects