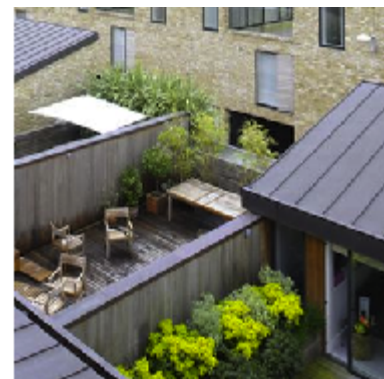


Contemporary terrace/courtyard housing.  
Architect: FCB Studios



Private rear amenity space.  
Architect: FCB Studio



Subservient mass to the rear of an existing terrace.  
Architect: Peter Barber



Large high level windows to maximise daylight penetration.  
Architect: Peter Barber



This drawing is prepared for the purposes of a planning application and to show design intent only. The information contained herein must not be used for costing, construction, engineering or any other purposes without agreement in writing from Waugh Thistleton Architects Ltd.

- NOTES
1. Residential Entrance - Individual dwelling.
  2. Residential Entrance - Communal
  3. B1 Entrance.
  4. Cafe / Gallery Entrance
  5. Proposed new facing brick TYPE 1. Stock brick in running bond with flush mortar joints generally. Standard size, colour and type to be agreed.

6. Proposed new facing brick TYPE 2. Stock brick in running bond with flush mortar joints generally. Standard size, colour and type to be agreed.
7. Re-used, reclaimed brick from the existing building.
8. Anodised aluminium thermally broken double glazed windows and doors.
9. Painted steel balcony / balustrade
10. Glass balustrade.
11. Anodised aluminium cladding.
12. Refuse / Recycling store with anodized aluminium access doors.
13. Raised planting beds.
14. Bio-Diverse green roof.
15. Sculptural play surface. ( Refer to Landscape proposals )

REV	NOTES	DATE	CHK
B	Heights Amended	16/02/15	PP
C	Included Extant consent outline	15/04/15	

Waugh Thistleton  
Architects Ltd  
74 Paul Street  
London EC2A 4NA  
U.K.  
T: +44 (0)20 7613 5727  
F: +44 (0)20 7613 5749  
email/web  
waughthistleton.com  
architects  
**Waugh  
Thistleton**

STATUT  
**PLANNING**  
Job 277a Grays Inn Road  
Title Proposed West Elevation  
Date April 2015  
Scale 1:200@A2  
Drawn PP