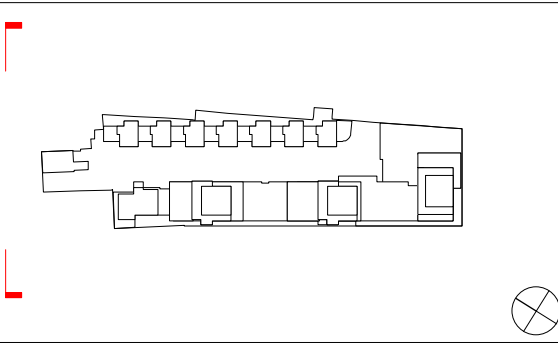


This drawing is prepared for the purposes of a planning application and to show design intent only. The information contained herein must not be used for costing, construction, engineering or any other purposes without agreement in writing from Waugh Thistleton Architects Ltd.

- NOTES
1. Residential Entrance - Individual dwelling.
  2. Residential Entrance - Communal
  3. B1 Entrance.
  4. Cafe / Gallery Entrance
  5. Proposed new facing brick TYPE 1. Stock brick in running bond with flush mortar joints generally. Standard size, colour and type to be agreed.
  6. Proposed new facing brick TYPE 2. Stock brick in running bond with flush mortar joints generally. Standard size, colour and type to be agreed.
  7. Re-used, reclaimed brick from the existing building.
  8. Anodised aluminium thermally broken double glazed windows and doors.
  9. Painted steel balcony / balustrade
  10. Glass balustrade.
  11. Anodised aluminium cladding.
  12. Refuse / Recycling store with anodized aluminium access doors.
  13. Raised planting beds.
  14. Bio-Diverse green roof.
  15. Concrete fascia.
  16. Re-used, reclaimed bricks at ground & lower ground floor.



REV	COMMENTS	DATE	PP	CHK
C	Heights Amended	16/02/15		

STATUS

# PLANNING

Job 277a Grays Inn Road  
 Title Proposed North Elevation  
 Date 05 May 2011  
 Scale 1:200 @ A3  
 Drawn PP

126-1401