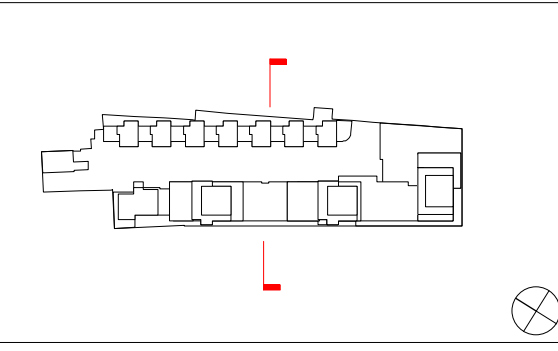
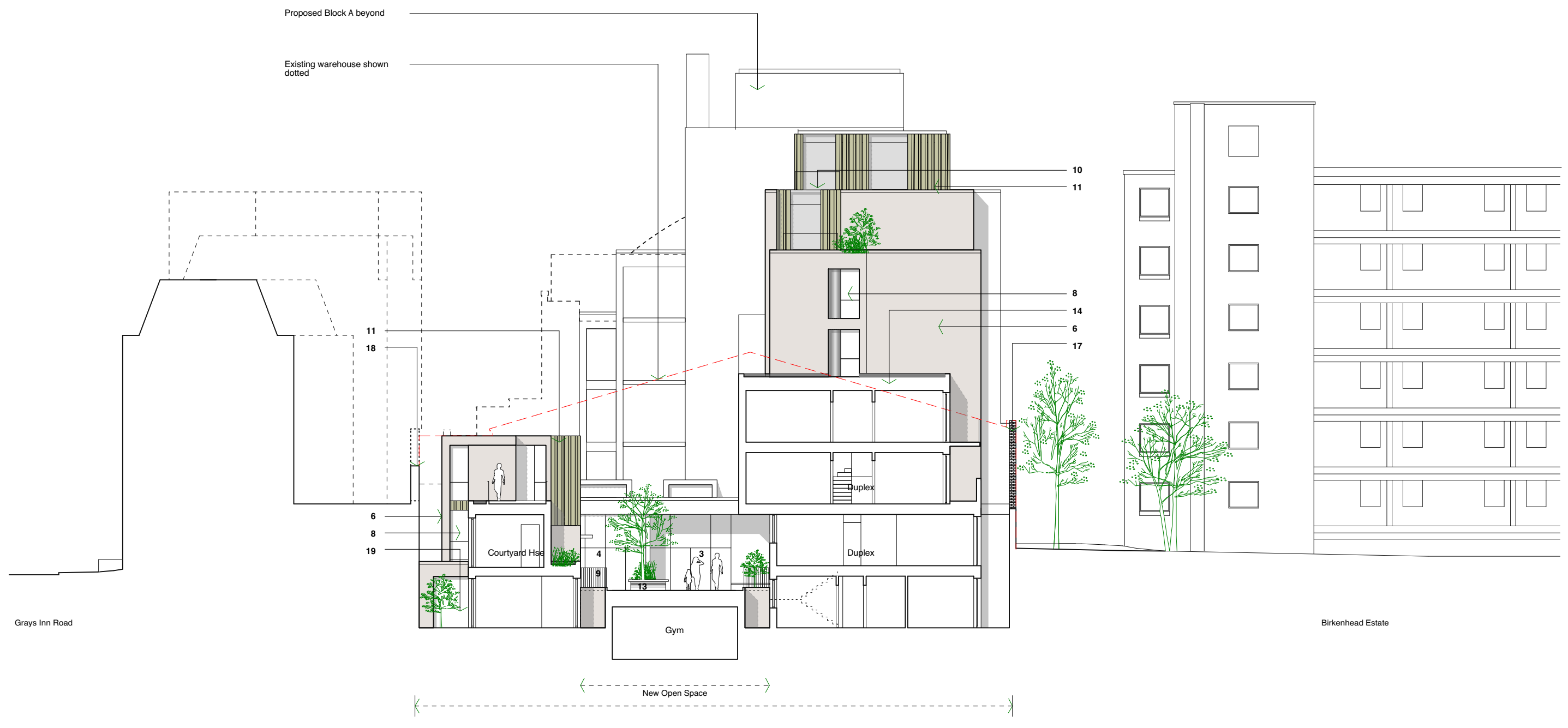


This drawing is prepared for the purposes of a planning application and to show design intent only. The information contained herein must not be used for costing, construction, engineering or any other purposes without agreement in writing from Waugh Thistleton Architects Ltd.

- NOTES
1. Residential Entrance - Individual dwelling.
 2. Residential Entrance - Communal
 3. B1 Entrance.
 4. Cafe / Gallery Entrance
 5. Proposed new facing brick TYPE 1. Stock brick in running bond with flush mortar joints generally. Standard size, colour and type to be agreed.
 6. Proposed new facing brick TYPE 2. Stock brick in running bond with flush mortar joints generally. Standard size, colour and type to be agreed.
 7. Re-used, reclaimed brick from the existing building.
 8. Anodised aluminium thermally broken double glazed windows and doors.
 9. Painted steel balcony / balustrade
 10. Glass balustrade.
 11. Anodised aluminium cladding.
 12. Refuse / Recycling store with anodized aluminium access doors.
 13. Raised planting beds.
 14. Bio-Diverse green roof.
 15. Concrete fascia.
 16. Re-used, reclaimed bricks at ground & lower ground floor.
 17. New boundary wall. Re-used bricks, reclaimed from the existing warehouse. Varying heights.
 18. Existing boundary warehouse wall, lower locally where possible. Not lower than +23.5m (1.7m above proposed 1st floor level)
 19. Rear lower ground courtyard (private)



- +42.90m
- 7 +39.725m
- 6 +36.8m
- 5 +33.80m
- 4 +30.80m
- 3 +27.80m
- 2 +24.80m
- 1 +21.80m
- UG +18.80m
- 0 +17.60m
- LG +15.875m
- 01 +13.975m
- +12.0m Survey Datum



B	Heights Amended	16/02/15	PP
REV	COMMENTS	DATE	CHK

STATUS

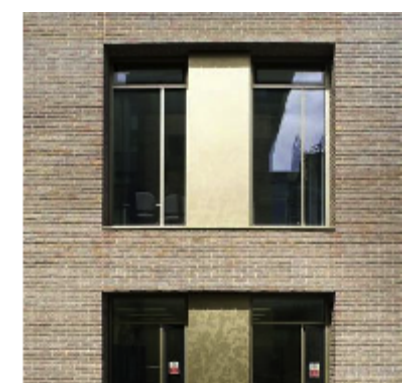
PLANNING

Job 277a Grays Inn Road
 Title Proposed Section B
 Date February 2015
 Scale 1:200 @ A3
 Drawn PP

126-1302



Mixed stock facing brick - contrasting tones.
Architect: Trevor Home



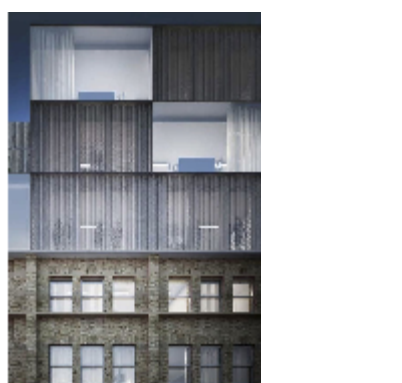
Deep brick reveals with aluminium windows & panels.
Architect: Hawkins/Brown



Varying reveals to articulate forms and massing.
Architect: Panter Hudspith



Stepping & recessed massing
Architect: Allies and Morrison



Lightweight, complementary upper storeys.
Architect: Duggan Morris

