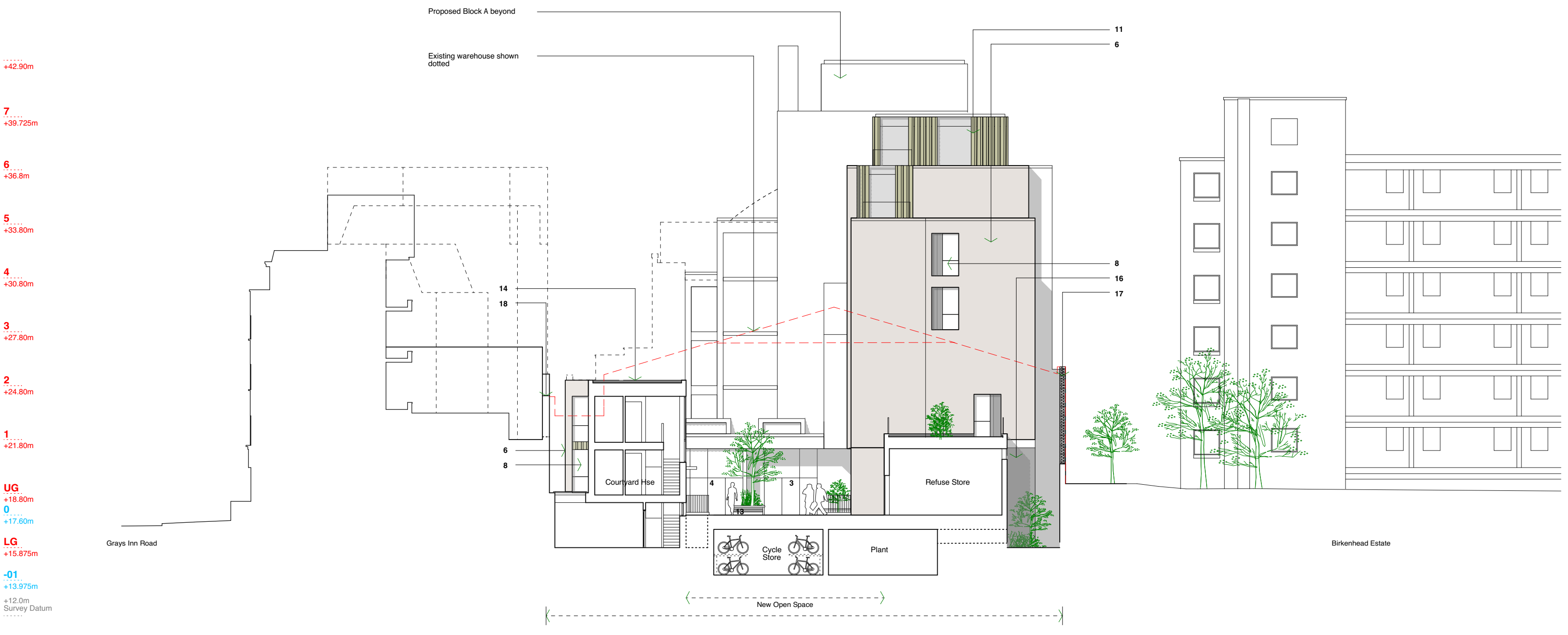
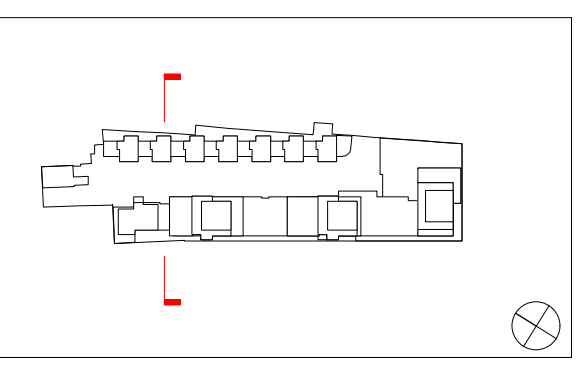


This drawing is prepared for the purposes of a planning application and to show design intent only. The information contained herein must not be used for costing, construction, engineering or any other purposes without agreement in writing from Waugh Thistleton Architects Ltd.

- NOTES:
1. Residential Entrance - Individual dwelling.
 2. Residential Entrance - Communal
 3. B1 Entrance.
 4. Cafe / Gallery Entrance
 5. Proposed new facing brick TYPE 1. Stock brick in running bond with flush mortar joints generally. Standard size, colour and type to be agreed.
 6. Proposed new facing brick TYPE 2. Stock brick in running bond with flush mortar joints generally. Standard size, colour and type to be agreed.
 7. Re-used, reclaimed brick from the existing building.
 8. Anodised aluminium thermally broken double glazed windows and doors.
 9. Painted steel balcony / balustrade
 10. Glass balustrade.
 11. Anodised aluminium cladding.
 12. Refuse / Recycling store with anodized aluminium access doors.
 13. Raised planting beds.
 14. Bio-Diverse green roof.
 15. Concrete fascia.
 16. Re-used, reclaimed bricks at ground & lower ground floor.
 17. New boundary wall. Re-used bricks, reclaimed from the existing warehouse. Varying heights.
 18. Existing boundary warehouse wall, lowered locally where possible. Not lower than +23.5m (1.7m above proposed 1st floor level in the courtyard houses)



A	Height's Amended	16/02/15	PP
REV	COMMENTS	DATE	CHK

STATUS

PLANNING

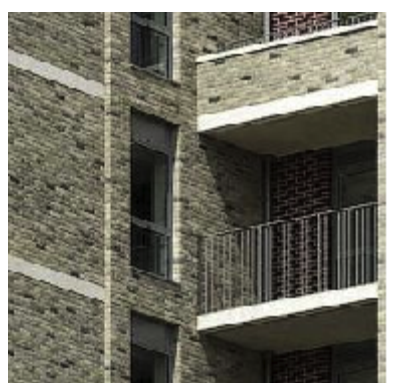
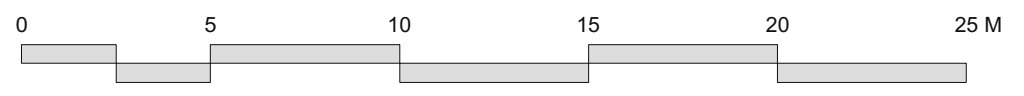
Job 277a Grays Inn Road

Title Proposed Section A

Date February 2015

Scale 1:200 @ A3

Drawn PP



Mixed stock facing brick - contrasting tones.
Architect: PRP Architects



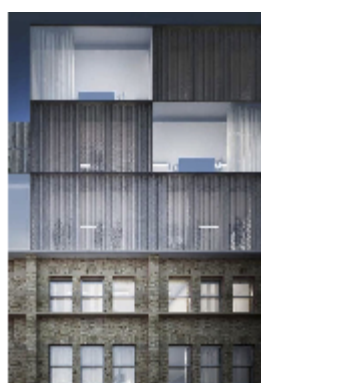
Deep brick reveals with aluminium windows & panels.
Architect: Hawkins/Brown



Varying reveals to articulate forms and massing.
Architect: Panter Hudspith



Stepping & recessed massing
Architect: Allies and Morrison



Lightweight, complementary upper storeys.
Architect: Duggan Morris

126-1301

Waugh Thistleton Architects Ltd
74 Paul Street
London EC2A 4NA

Telephone
+44 (0)20 7613 5727

Fax
+44 (0)20 7613 5749

email/web
waughthistleton.com

architects
Waugh Thistleton