

Project:
277a Grays Inn Road
Drawing:
Proposed
Section F
Scale:
1:200@A2
Drawing Number:
126 - 1306 A
Date:
August 2014
Status:
PLANNING
Revisions:

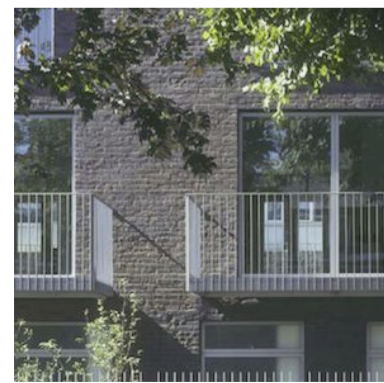
A: August 14 - Minor amendments to Block E.

- 7 +38.90m
- 6 +36.05m
- 5 +33.20m
- 4 +30.35m
- 3 +27.50m
- 2 +24.65m
- 1 +21.80m
- UG +18.95m
- 0 +17.60m
- LG +16.10m
- 01 +14.30m
- +12.0m
Survey Datum



NOTES:

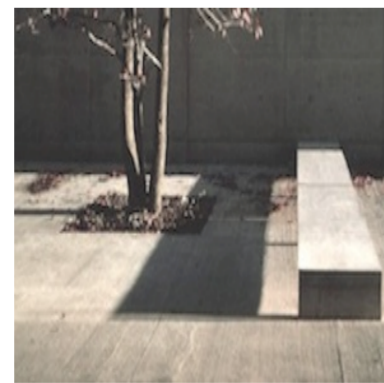
1. Residential Entrance - Individual dwelling.
2. Residential Entrance - Communal
3. B1 Entrance.
4. Cafe / Gallery Entrance
5. Proposed new facing brick TYPE 1. Stock brick in running bond with flush mortar joints generally. Standard size, colour and type to be agreed.
6. Proposed new facing brick TYPE 2. Stock brick in running bond with flush mortar joints generally. Standard size, colour and type to be agreed.
7. Re-used, reclaimed brick from the existing building.
8. Anodised aluminium thermally broken double glazed windows and doors.
9. Painted steel balcony / balustrade
10. Glass balustrade.
11. Anodised aluminium cladding.
12. Refuse / Recycling store with anodized aluminium access doors.
13. Raised planting beds.
14. Bio-Diverse green roof.
15. Concrete fascia.
16. Re-used, reclaimed bricks at ground & lower ground floor.
17. New boundary wall. Re-used bricks, reclaimed from the existing warehouse. Varying heights.
18. Existing boundary warehouse wall, lower locally where possible. Not lower than +23.5m (1.7m above proposed 1st floor level)
19. Rear lower ground courtyard (private)



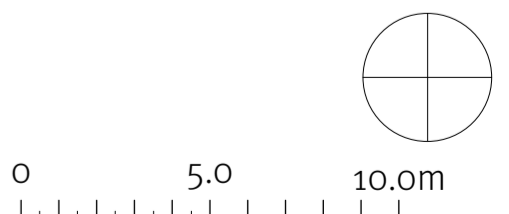
Projecting balconies - Flat steel section balustrades
Architect: Tony Fretton



Private gardens to rear of ground floor dwellings.
Architect: FCB Studios



Planting and seating to external open space



2-10 Adam Street,
London WC2N 6AA
www.materialarchitects.co.uk

© Material Architects Ltd. No implied licence exists. This drawing must not be used to calculate areas for the purposes of valuation. Do not scale this drawing for construction. All dimensions to be checked on site by the contractor and such dimensions to be their responsibility. All work must comply with relevant British Standards & Building Regulations. Drawing errors and omissions to be reported to the Architect.