

Rosewood London

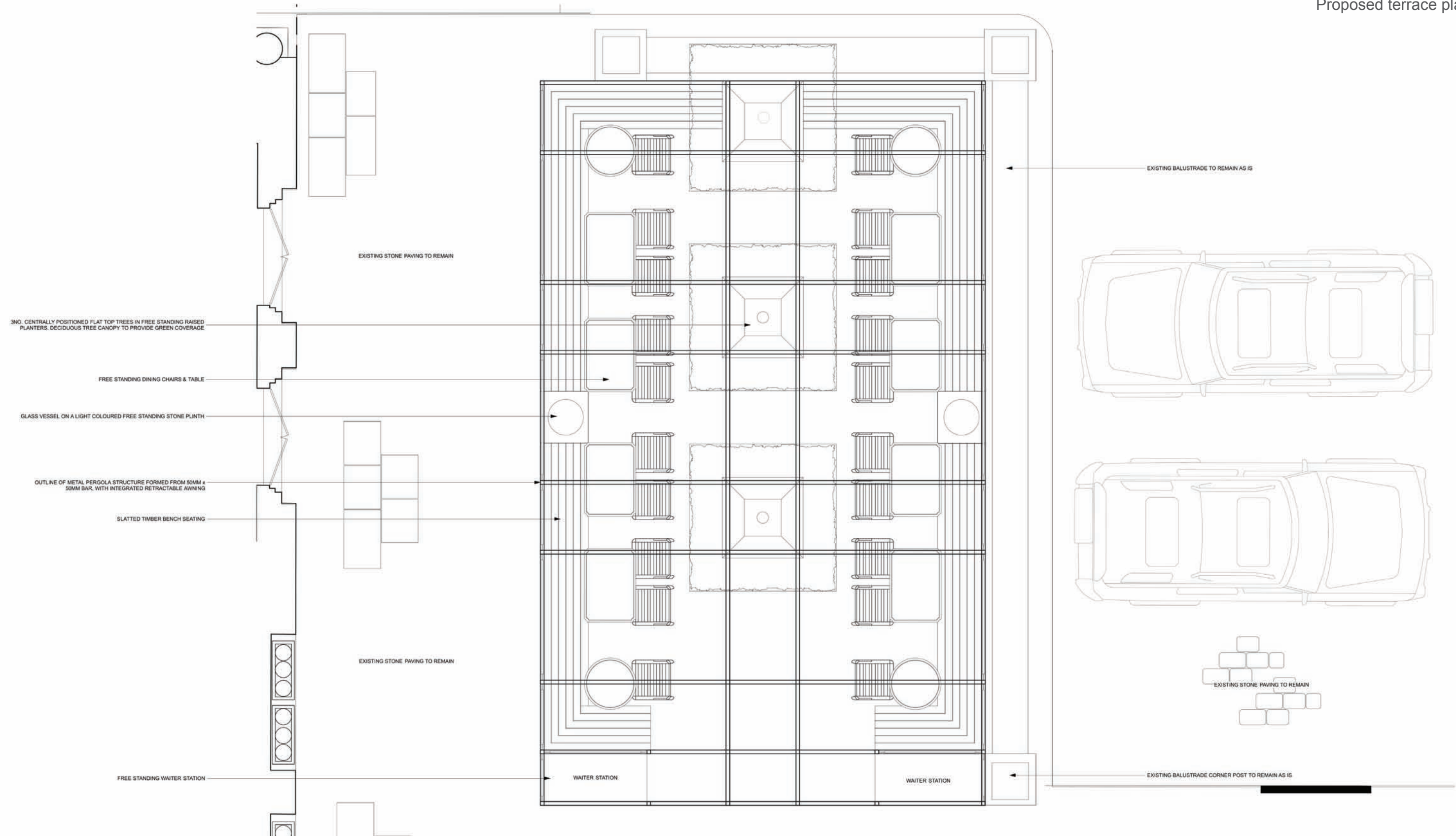
9th April 2015

Courtyard Proposal











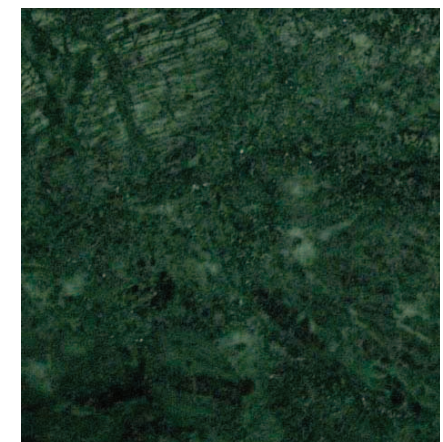
Rosewood London Free standing seating

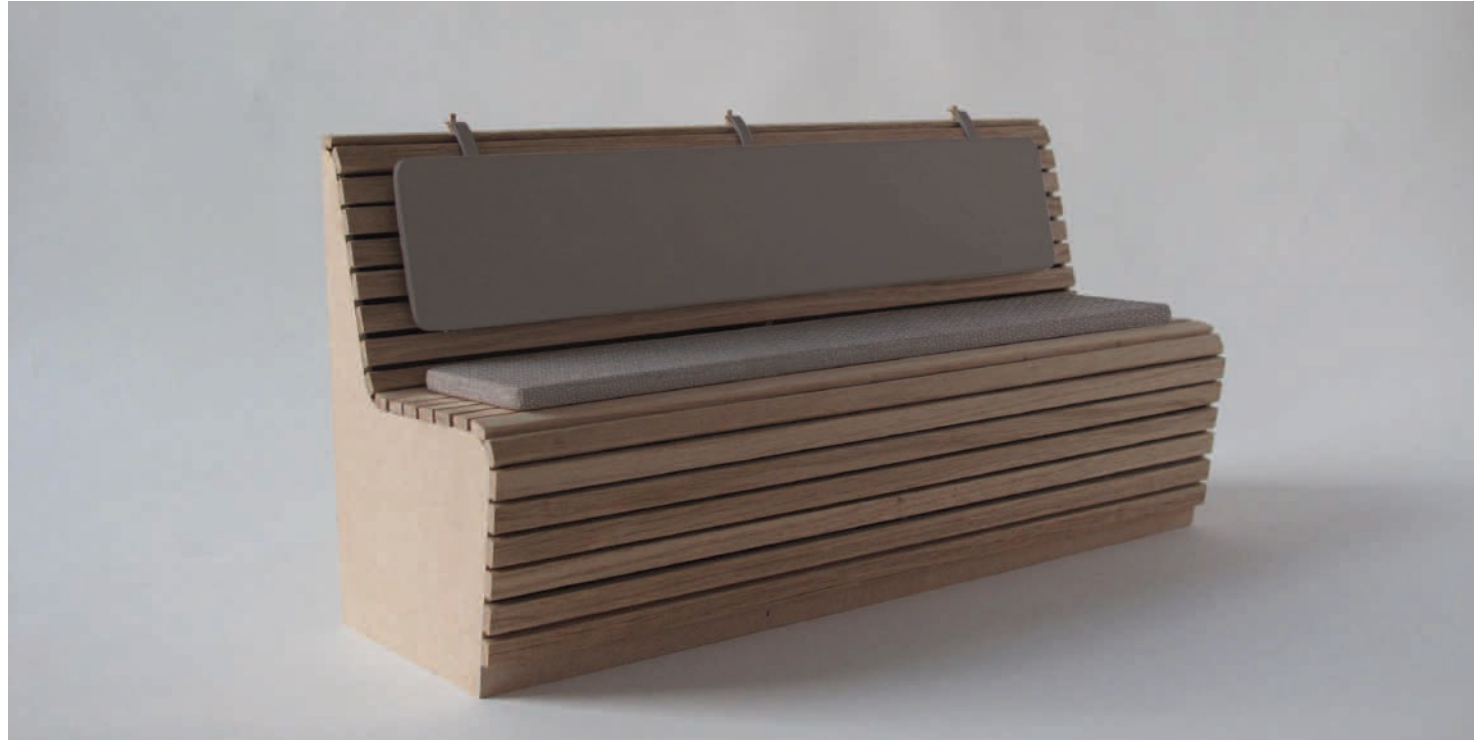
MATERIAL FINISH: Frame to be made of English Oak with 'Raw' oil finish. Seat and back cushion in neutral coloured exterior fabric



Rosewood London Free standing tables

TABLE FINISH: Table top to be made of Verde Guatemala marble with nose detail. Table legs in bronze coloured metal finish





Rosewood London

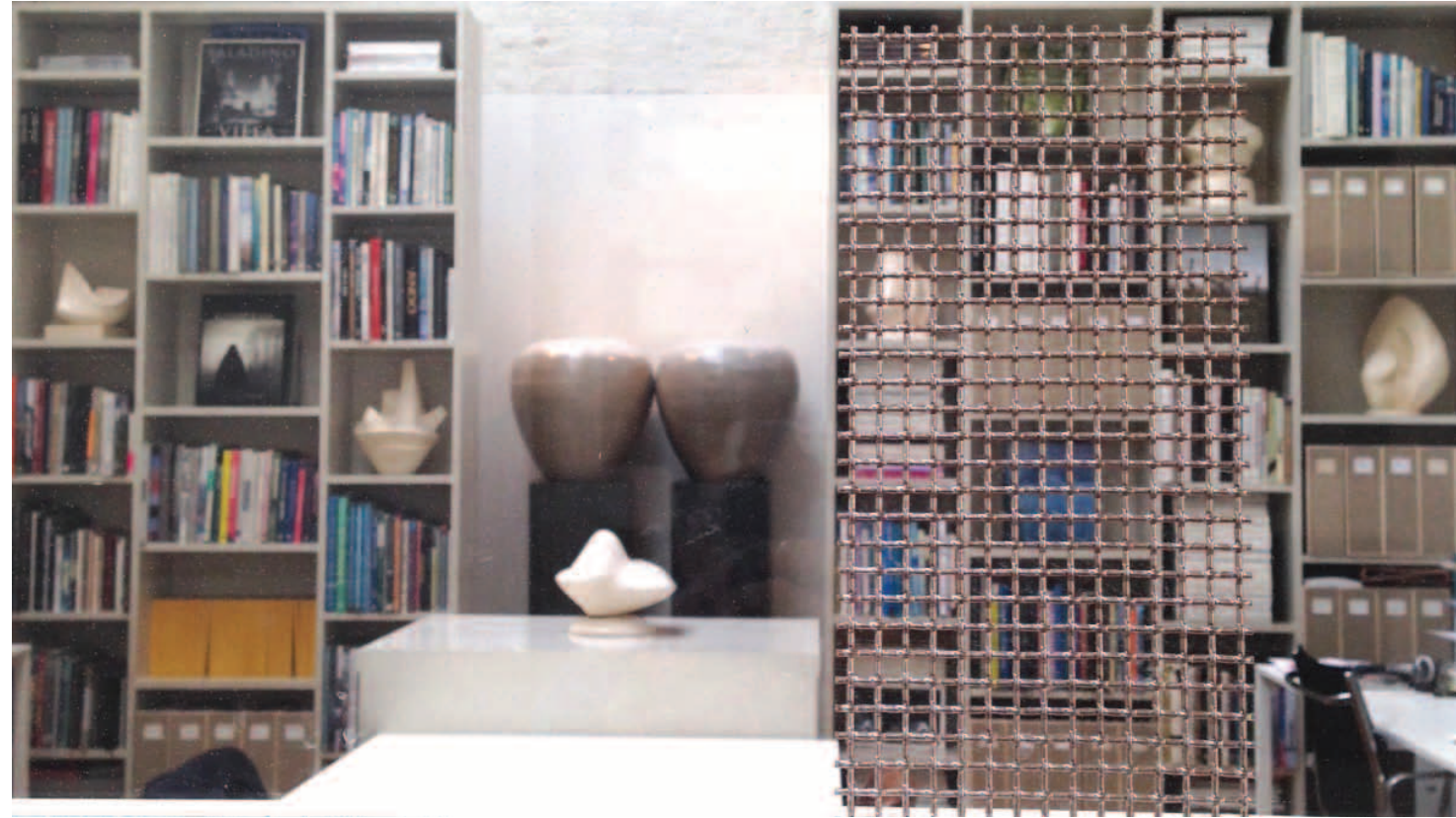
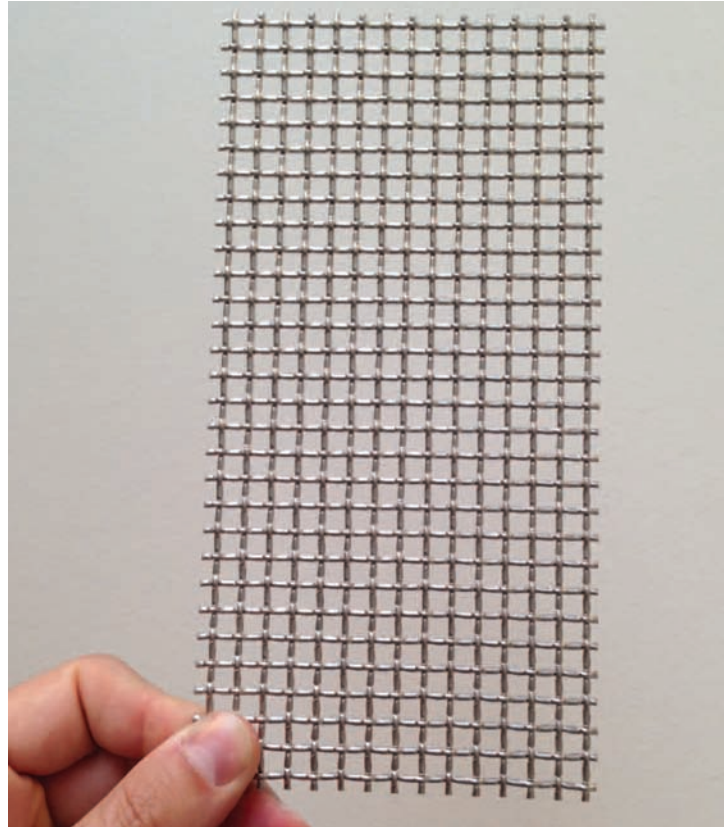
SLATTED TIMBER BENCH SEATS: Frame to be made of English Oak with 'Raw' oil finish. Seat cushion in neutral coloured exterior fabric. Back cushion in synthetic leather material, fixed via a wooden peg and bronze ring detail



Rosewood London Central tree planters

PLANTER FINISH: Metal cladding to planters of central trees. Trees are to be pruned table top deciduous trees underplanted with evergreen low growing ground cover. Tree planters with stone top to act as additional standing table surface





Rosewood London

WOVEN METAL MESH: Semi transparent woven metal fabric with multiple light reflecting facets to provide coverage to awning. To be light in colour to compliment the building facade.

Transparency: 64% open area of mesh

Luciano *GIUBBILEI*

Luciano Giubbilei Design

Studio E6, The Imperial Laundry

71 Warriner Gardens

London SW11 4XW

t: +44 (0) 20 7622 261

www.lucianogiubbilei.com