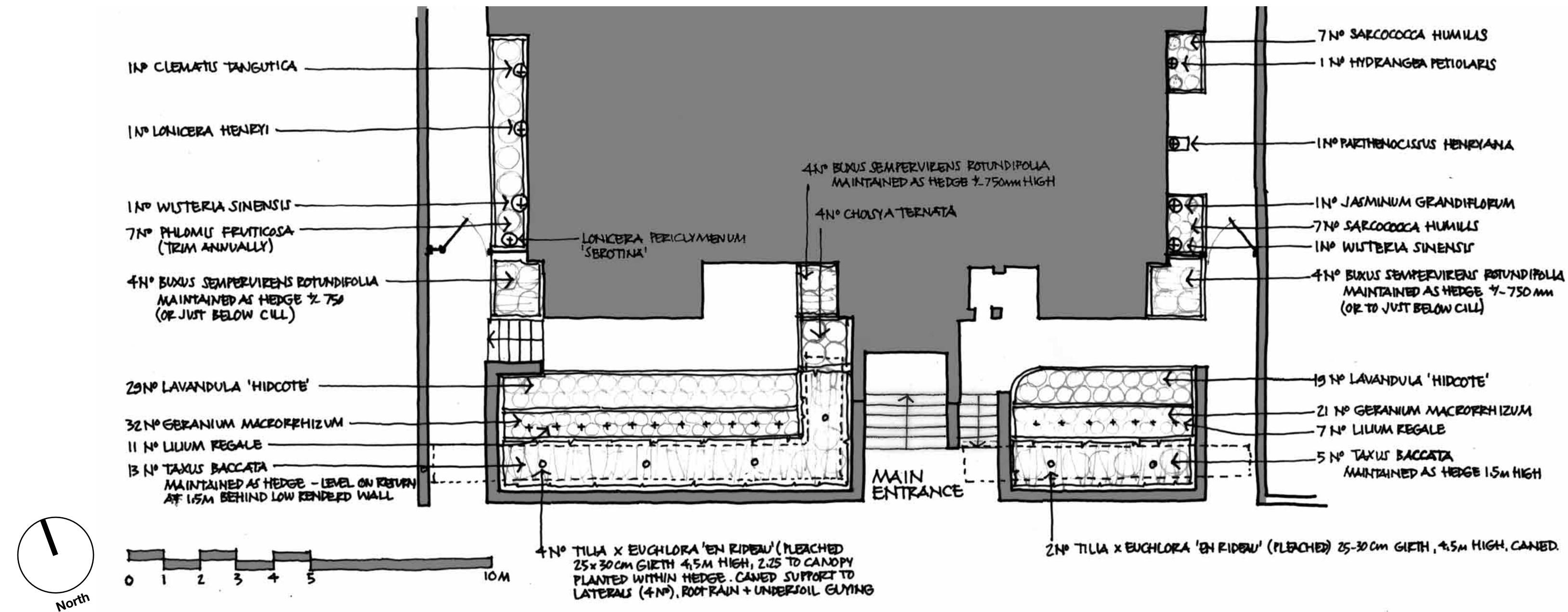
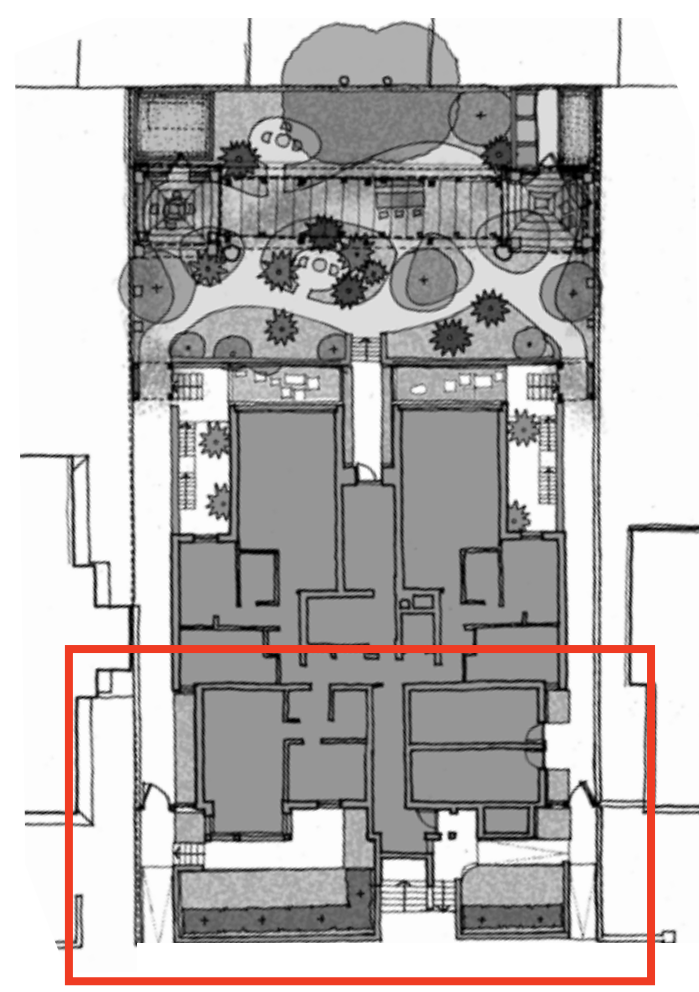


Typical section through front garden 1:50



Planting arrangement for front garden



Planting schedule for front and back gardens

Plant name	No	Planting size (pot)	Density
Shrubs			
<i>Aucuba japonica viridis</i>	3	10 litre	specimen
<i>Camelia 'Bow Bells'</i>	1	10 litre	specimen
<i>Choisia ternata</i>	12	5 litre	3/m3
<i>Hydrangea aspera</i>	1	10 litre	specimen
<i>Hydrangea quercifolia</i>	3	10 litre	specimen
<i>Lavandula 'Hidcote'</i>	53	3 litre	5/m2
<i>Mahonia japonica 'Lionel Fortescue'</i>	8	5 litre	3/m2
<i>Osmanthus burkwoodii</i>	1	25 litre	specimen
<i>Philadelphus lemoinii</i>	5	10 litre	specimen
<i>Phlomis fruticosa</i>	7	3 litre	4/m2
<i>Rosmarinus officinale</i>	5	2 litre	5/m2
<i>Ruscus aculeatus</i>	7	5 litre	4/m2
<i>Senecio greyii</i>	4	2 litre	3/m2
<i>Skimmia japonica 'Rubella'</i>	12	3 litre	3/m2
<i>Taxus baccata (hedging)</i>	18	rootballed	1.2m high 1m c/c
<i>Viburnum sargentii 'onodaga'</i>	1	5 litre	3/m2
<i>Viburnum davidii</i>	18	3 litre	3/m2
<i>Viburnum rhytidophyllum</i>	1	10 litre	specimen
<i>Weigelia 'Ruby'</i>	1	5 litre	1/m2
Ferns, Grasses & Perennials			
<i>Acanthus mollis</i>	3	5 litre	3/m2
<i>Anemone hephehenis japonica 'Honerine Joubert'</i>	19	2 litre	7/m2
<i>Anemone hephehenis japonica 'Prinz Heinrich'</i>	8	2 litre	7/m2
<i>Asplenium scolopendrium</i>	14	2 litre	groups of 3 or 5
<i>Aruncus sylvester</i>	4	3 litre	5/m2
<i>Athyrium filix-femina</i>	11	3 litre	single or groups of 3
<i>Dryopteris filix-mas</i>	13	3 litre	single or groups of 3
<i>Dryopteris dilatata</i>	7	3 litre	single or groups of 3
<i>Hosta sieboldiana glauca 'Big Daddy'</i>	6	3 litre	groups of 3
<i>Miscanthus sinensis 'Kleine Silberspinne'</i>	11	3 litre	5/m2
<i>Pennisetum villosum 'Cream Falls'</i>	4	3 litre	5/m2
<i>Pennisetum villosum 'Dark Desire'</i>	6	3 litre	5/m2

Plant name	No	Planting size (pot)	Density
Climbers			
<i>Clematis tangutica</i>	4	5 litre	specimen
<i>Jasminum grandiflorum</i>	3	5 litre	specimen
<i>Jasminum nudiflorum</i>	2	3 litre	specimen
<i>Hydrangea petiolaris</i>	4	10 litre	specimen
<i>Lonicera periclymenum 'Belgica'</i>	2	3 litre	plant with Lp. 'Serotina'
<i>Lonicera periclymenum 'Serotina'</i>	3	3 litre	plant with Lp. 'Belgica'
<i>L. henryi 'Copper Beauty'</i>	3	5 litre	specimen
<i>Passiflora edulis</i>	2	5 litre	specimen
<i>Parthenocissus henryana</i>	7	5 litre	specimen
<i>Vitis vinifera 'Marshall Foch'</i>	1	5 litre	specimen
<i>Wisteria sinensis alba</i>	2	10 litre	specimen
<i>Wisteria sinensis</i>	3	10 litre	specimen
Groundcover			
<i>Alchemilla mollis</i>	17	2 litre	7/m2
<i>Bergenia cordifolia</i>	23	3 litre	7/m2
<i>Brunnera macrophylla 'Jack Frost'</i>	3	3 litre	5/m2
<i>Buxus sempervirens rotundifolia</i>	55	1 litre & as specimens	300mm c/c for hedge
<i>Buxus sempervirens CUBE</i>	1	10 litre	specimen
<i>Epimedium rubrum</i>	113	2 litre	9/m2
<i>Geranium macrorrhizum</i>	98	2 litre	9/m2
<i>Hedera helix 'sagittifolia'</i>	4	1 litre	9/m2
<i>Hedera helix 'green ripple'</i>	22	1 litre	9/m2
<i>Heuchera 'Red Spangles'</i>	18	3 litre	9/m2
<i>Heuchera 'Palace Purple'</i>	20	3 litre	9/m2
<i>Lamium galeobdolon 'Beacon Silver'</i>	13	1 litre	12/m2
<i>Lamium galeobdolon 'White Nancy'</i>	18	1 litre	12/m2
<i>Lamium maculatum 'Orchid Frost'</i>	20	1 litre	12/m2
<i>Liriope muscari</i>	109	2 litre	12/m2
<i>Ophiopogon japonicus</i>	81	2 litre	12/m2
<i>Pachysandra terminalis</i>	106	2 litre	12/m2
<i>Sarcococca hookeriana humilis</i>	42	5 litre	5/m2
<i>Saxifraga x urbanis</i>	25	1.5 litre	10/m2
<i>Soleirolia soleirolii</i>	28	1 litre	12/m2
<i>Tellima grandiflora</i>	14	3 litre	7/m2
<i>Vinca minor purpurea</i>	40	3 litre	9/m2

Plant name	No	Planting size (pot)	Density
Bulbs and corms			
<i>Canna indica</i>	3	-	group
<i>Convolvulus majlis</i>	61	-	drifts 20-30 5cm apart
<i>Cyclamen hederifolium</i>	15	-	drifts 10 - 15/m2
<i>Galanthus nivalis</i>	40	-	drifts of 50-100 2-3cm apart as directed
<i>Lilium regale</i>	27	-	Use large high quality bulbs
Specimen plants & trees			
<i>Acer palmatum dissectum</i>	1	rootballed	specimen 1.5m high
<i>Acer palmatum osakazuki</i>	1	rootballed	specimen 1.5m high
<i>Albizia julibrissin</i>	1	rootballed	specimen 1.5m high
<i>Brugmansia arborea</i>	1	5 litre	specimen (under the verandah)
<i>Chamaerops humilis</i>	4	10 - 25 litre	specimen groups of 3
<i>Cordylone australis</i>	1	10 litre	specimen
<i>Dicksonia antarctica</i>	5	50 litre	specimen - 1.5-2.5m stem
<i>Ensete ventricosum 'Mamelii'</i>	2	5 litre	specimen
<i>Eriobotrya japonica</i>	1	25 litre	specimen
<i>Fatsia japonica</i>	3	10 litre	specimen
<i>Ginkgo biloba</i>	1	rootballed	specimen
<i>Helychium gardnerianum kalili</i>	3	20-25cm girth	specimen 4-5m high group
<i>Magnolia grandiflora</i>	1	rootballed	specimen
<i>Melianthus major</i>	1	10 litre	specimen
<i>Pawlonia imperiali</i>	1	25 litre	specimen
<i>Phormium tenax</i>	1	25 litre	specimen
<i>Phyllostachys nigra</i>	14	10 litre	groups of 3 or 5
<i>Sambucus nigra purpurea 'Black Lace'</i>	1	10 litre	specimen
<i>Tilia x Euchtora</i>	6	rootballed	(pleached 4 laterals)
<i>Trachycarpus fortunei</i>	1	25-30 cm girth	specimen 1.5-2.5m stem

Notes	
Revisions	Date
Additional info	17.11.14

studioengleback

245 Upper Grosvenor Road, Tunbridge Wells
 Kent TN1 2EJ United Kingdom
 t: +44 (0)1892 538 537
 e: luke@studioengleback.com
 w: studioengleback.com

Client
Optic Realm Ltd

Lead Consultant
John Pardey Architects

Project
Clifford Pugh House, Lancaster Grove

Drawn	LE	Checked	LE
Issue	PLANNING		
Date	10.10.14		
Scale	1:50 @ A1	Rev	

Drawing Title
Front garden planting plan & schedule
 Presentation Plan
 Drawing No **358/P/1002 rev A**

Do not scale from drawing. Check all dimensions on site.
 Copyright © StudioEngleback All rights reserved.