

UCL WATES HOUSE

PLANNING CONDITIONS DISCHARGE

APRIL 2015



Conditions Summary

Condition 2

- Detailed drawings, or samples of materials as appropriate, in respect of the following, shall be submitted to and approved in writing by the local planning authority before the relevant part of the work is begun:
- a) Plan, elevation and section drawings of all external entranceways including doors, glazing panels and the service ramp gate, at a scale of 1:20;
- b) Plan, elevation and section drawings of typical balustrades and parapets at a scale of 1:10;
- c) Plan, elevation and section drawings of typical ground floor shutter arrangements including means of fixing and any interface to external framed glazing

Material Selection

Brick and cladding samples located on site

① **Clay facing brickwork**

Janinhoff waterstruck facing brick - MSZ-DF-GR-14/601.

② **Natural unpatinated brass cladding**

POHL Brass to natural factory milled-surface, suitable for weathering to self-develop brownish oxidisation.

③ **GRC cladding**

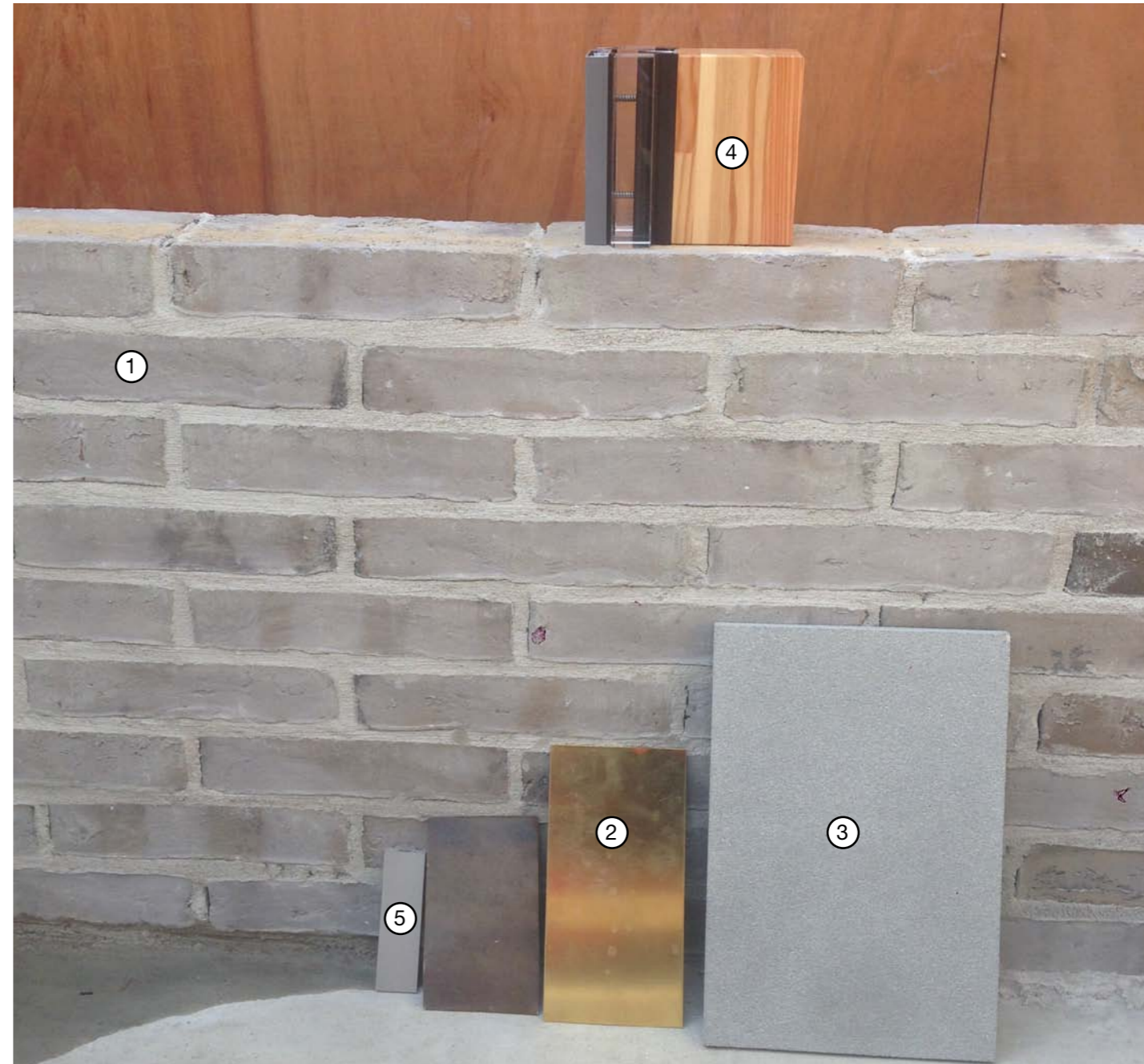
Rieder Fibre C

④ **Hybrid curtain walling**

Internal timber framing

⑤ **Anodised aluminium**

Window framing & parapet coping

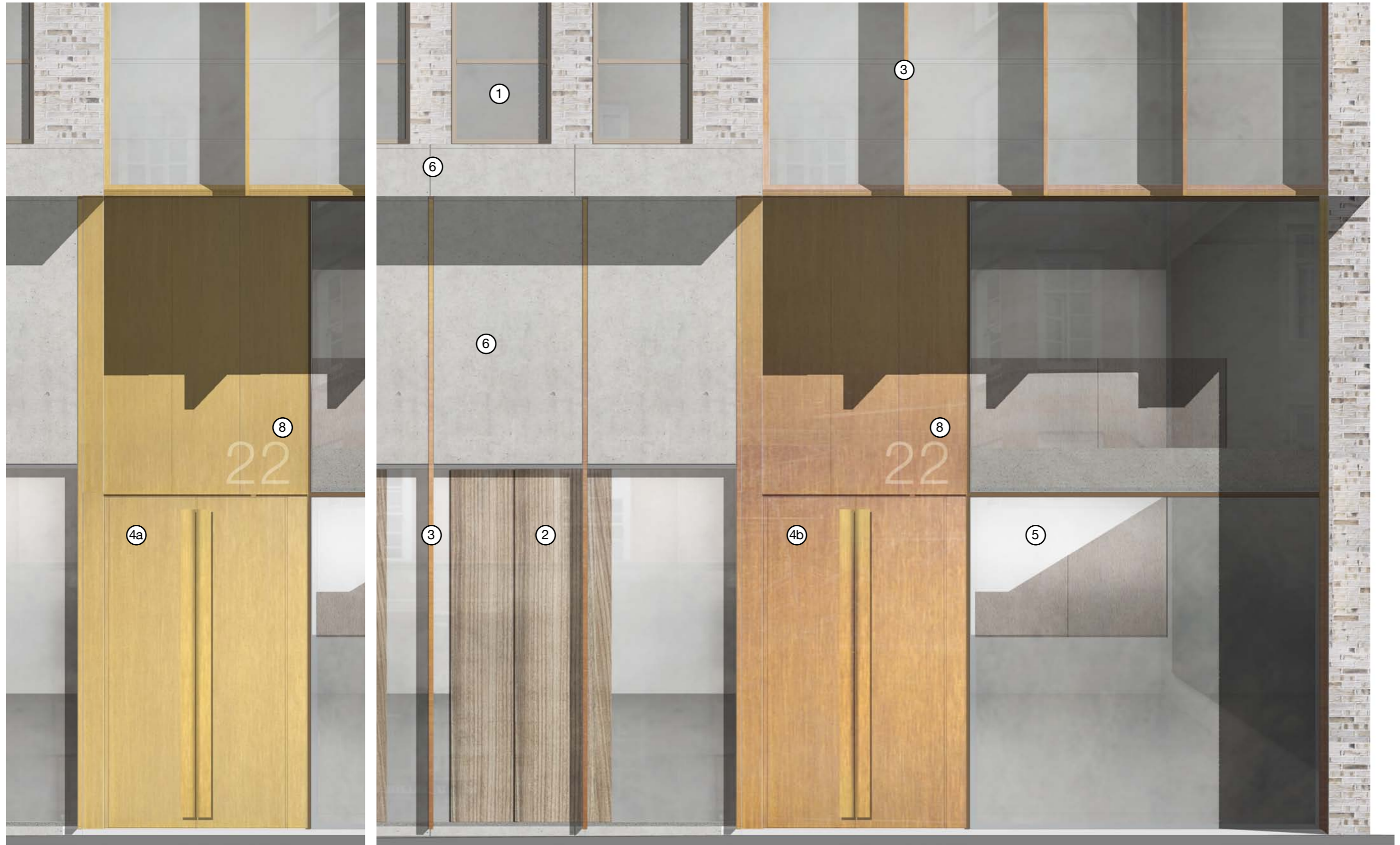


Condition 2a

Main Entrance Elevation

- ① Hybrid curtain walling (timber internal)
- ② Internal gallery shutters
- ③ Brass fin attachments
- ④a Brass-clad door (initial appearance)
- ④b Brass-clad door (indicative 12 months' weathering)

- ⑤ Glazed door
- ⑥ GRC cladding panel
- ⑦ Brickwork facing
- ⑧ Etched signage



Condition 2a

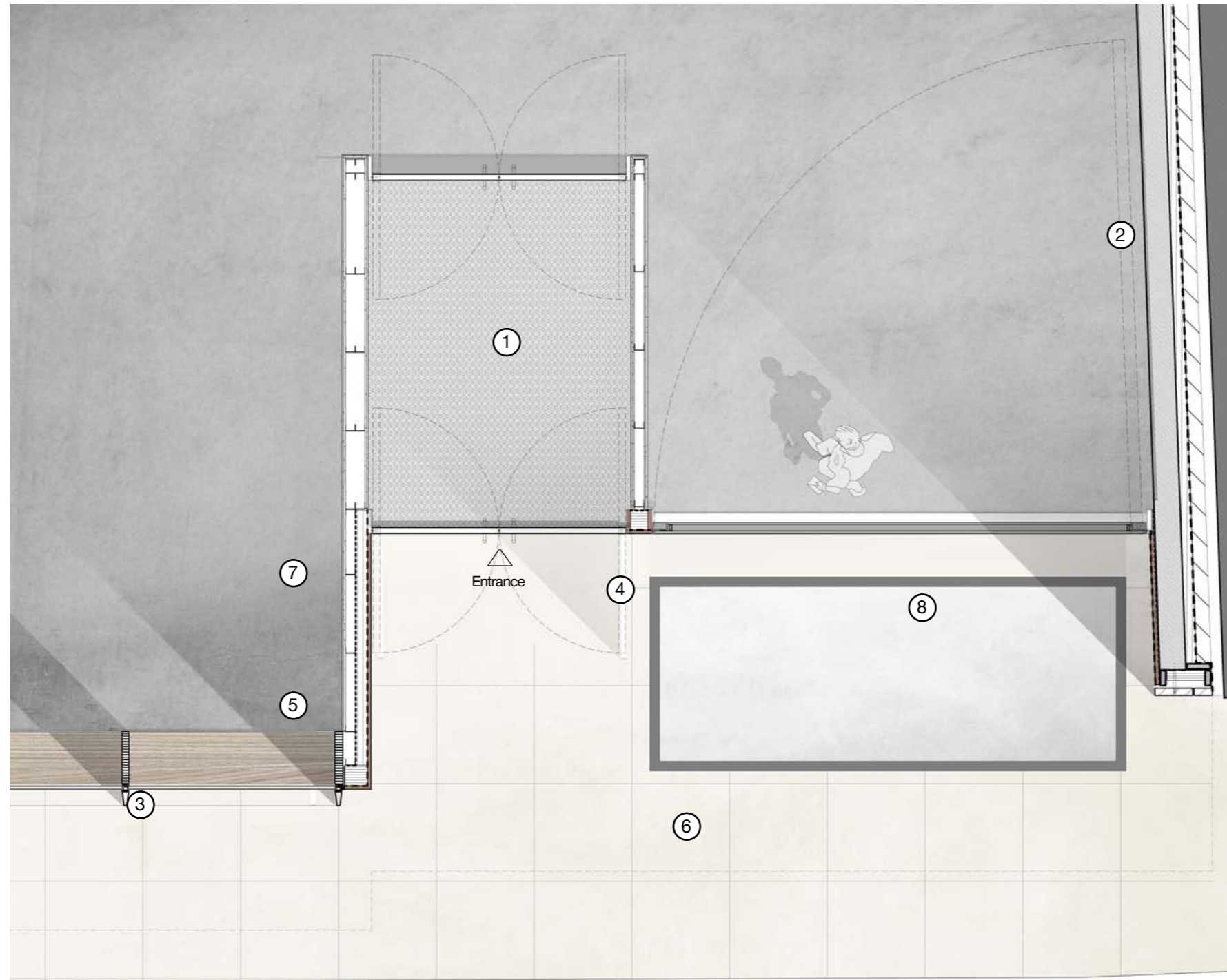
Main Entrance Section



Condition 2a

Main Entrance Plan

- ① Entrance matting
- ② Glazed door
- ③ Brass fin attachments
- ④ Brass-clad door
- ⑤ Internal gallery shutters
- ⑥ Flag paving
- ⑦ Screed finish
- ⑧ Pavement light

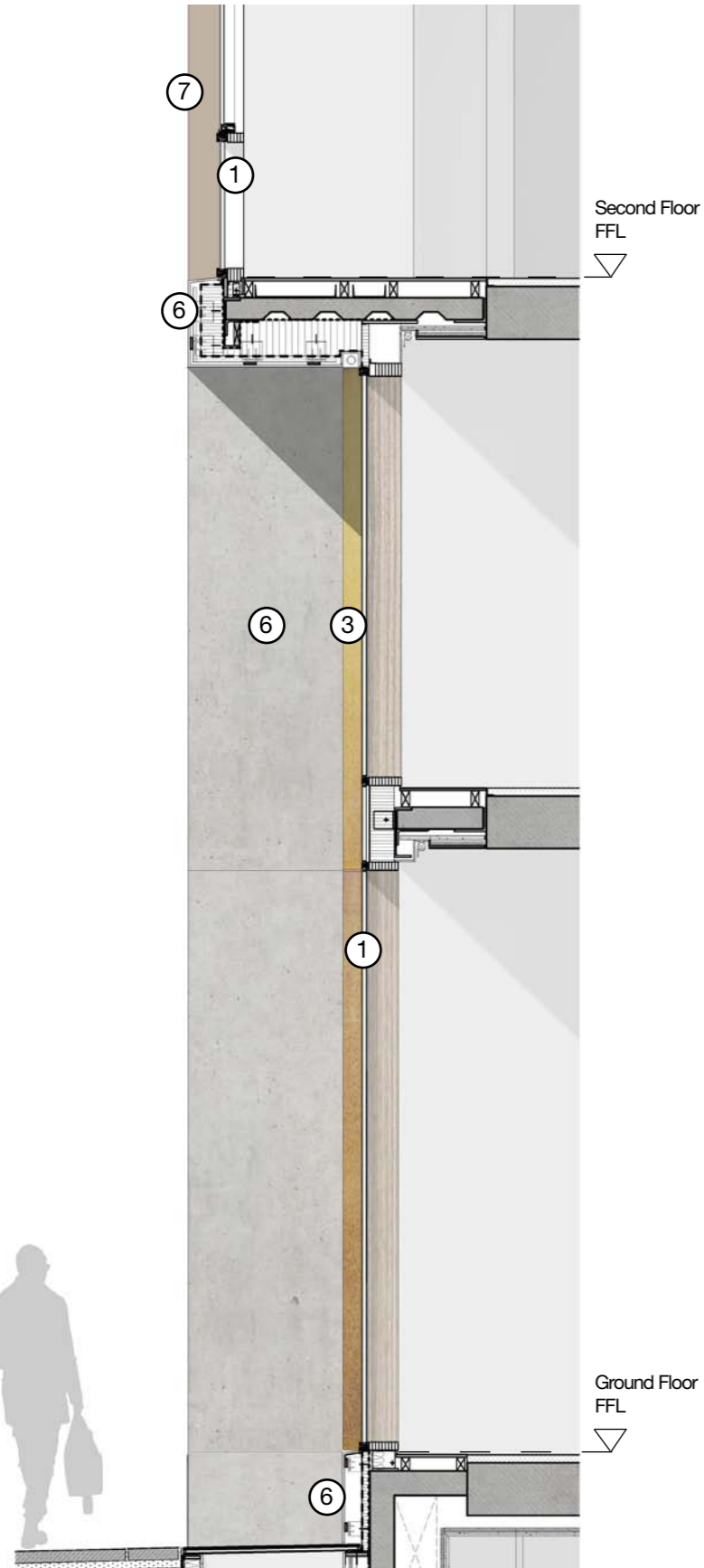


Condition 2a

Endsleigh Gardens Fire Escape Section & Elevation

- ① Hybrid curtain walling (timber internal)
- ② Internal gallery shutters
- ③ Brass fin attachments
- ④ Brass-clad door

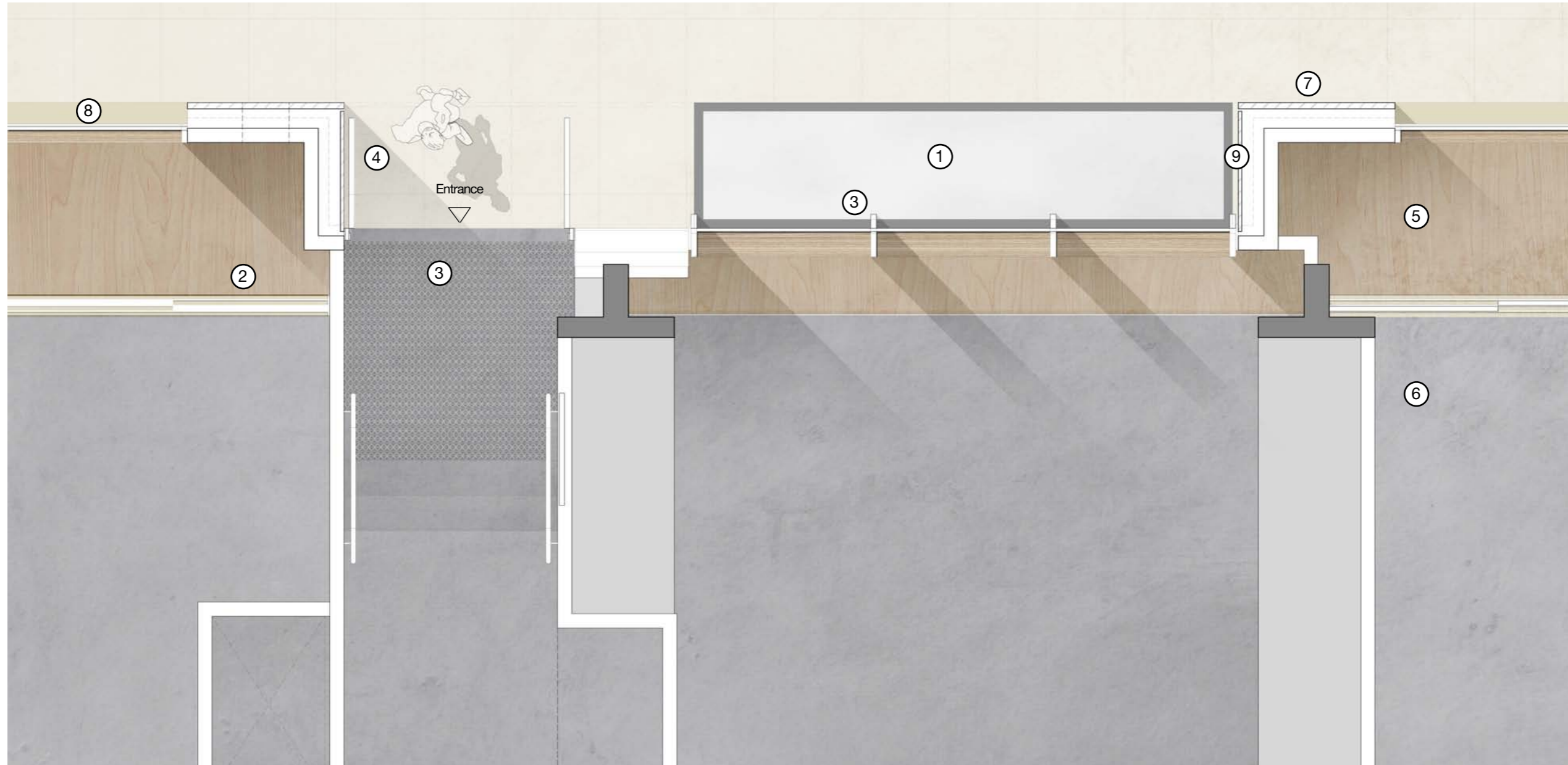
- ⑤ Brickwork facing
- ⑥ GRC cladding panel
- ⑦ Anodised aluminium frame



Condition 2a

Endsleigh Gardens Fire Escape Plan

- ① Pavement light
- ② Internal gallery shutters
- ③ Brass fin attachments
- ④ Brass-clad door
- ⑤ Plywood floor
- ⑥ Screed finish
- ⑦ Brickwork facing
- ⑧ Anodised aluminium sill
- ⑨ GRC cladding panel



Condition 2a

Taviton Street Gate Elevation

- ① Hybrid curtain walling (timber internal)
- ② Internal gallery shutters
- ③ Brass fin attachments
- ④ Brass gate with integrated escape door

- ⑤ Anodised aluminium panel
- ⑥ Brickwork facing



Condition 2b

External Walkway Balustrade Elevation

- ① Hybrid curtain walling (timber internal)
- ② Anodised aluminium curtain walling
- ③ Anodised aluminium louvered door
- ④ Brass-clad door

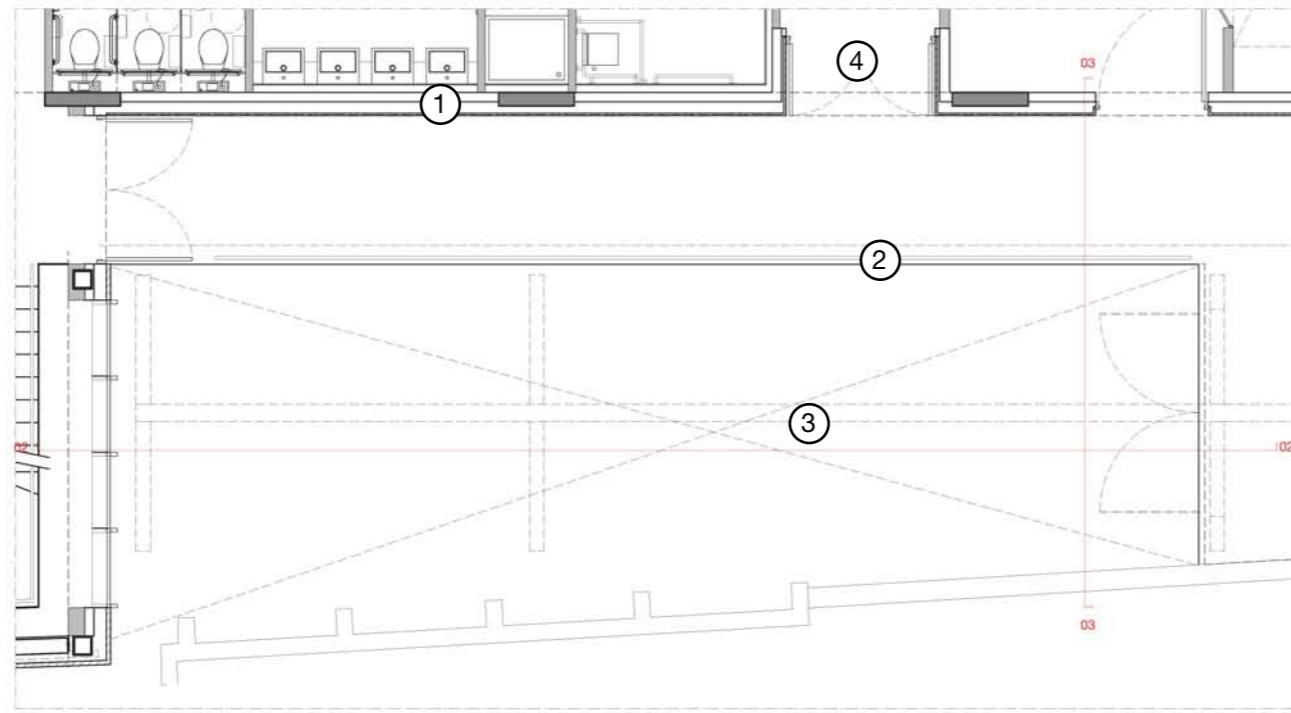
- ⑤ Brass balustrade
- ⑥ Brass fin attachments
- ⑦ GRC cladding panel
- ⑧ Brickwork facing



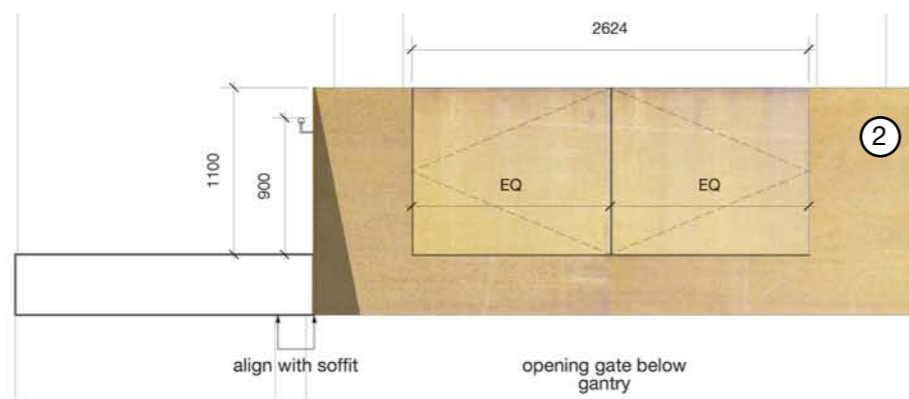
Condition 2b

External Walkway Balustrade Details

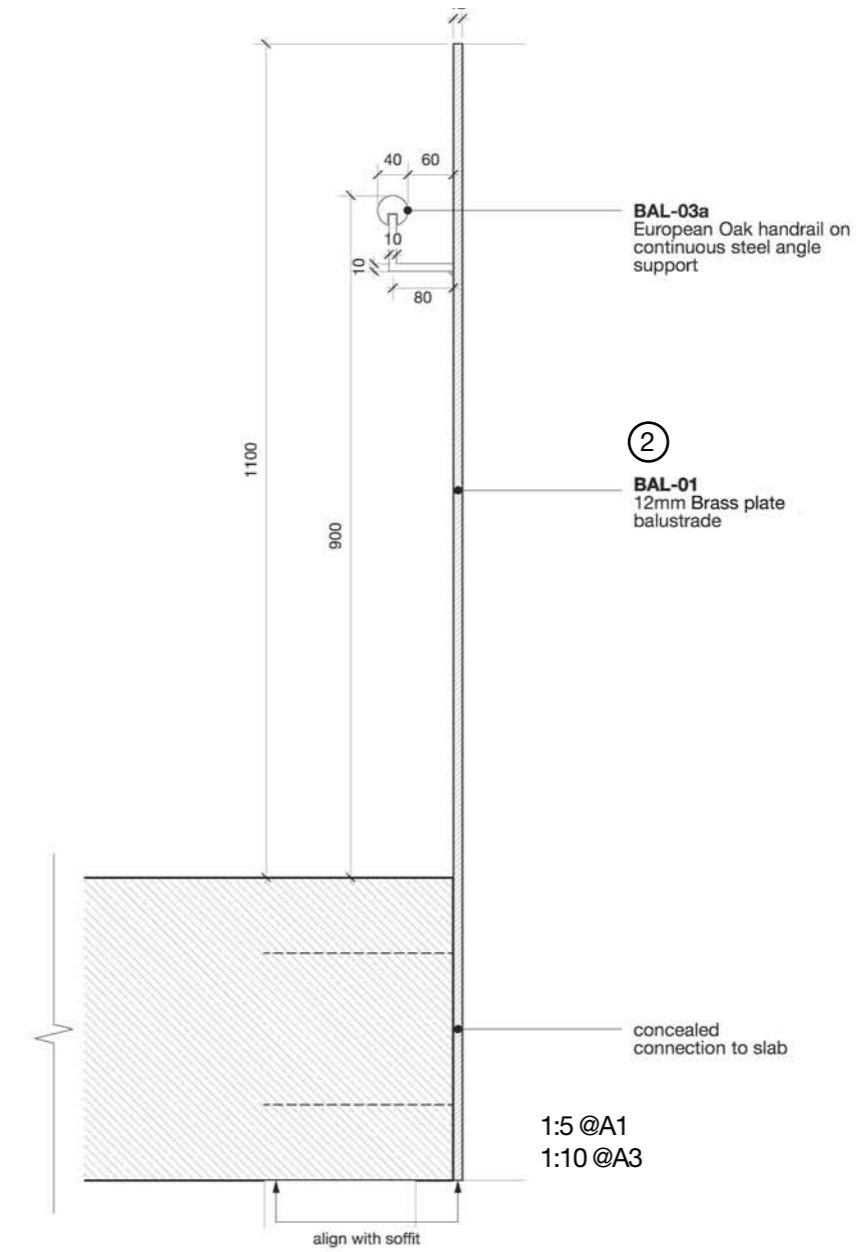
- ① GRC cladding panel
- ② Brass balustrade
- ③ Indicative gantry above
- ④ Brass-clad door



1:50 @A1
1:100 @A3



1:25 @A1
1:50 @A3



1:5 @A1
1:10 @A3

Condition 2b

Roof Terrace Balustrade Elevation

- ① Hybrid curtain walling (timber internal)
- ② Anodised aluminium sill
- ③ GRC balustrade
- ④ Brickwork facing
- ⑤ Anodised aluminium coping

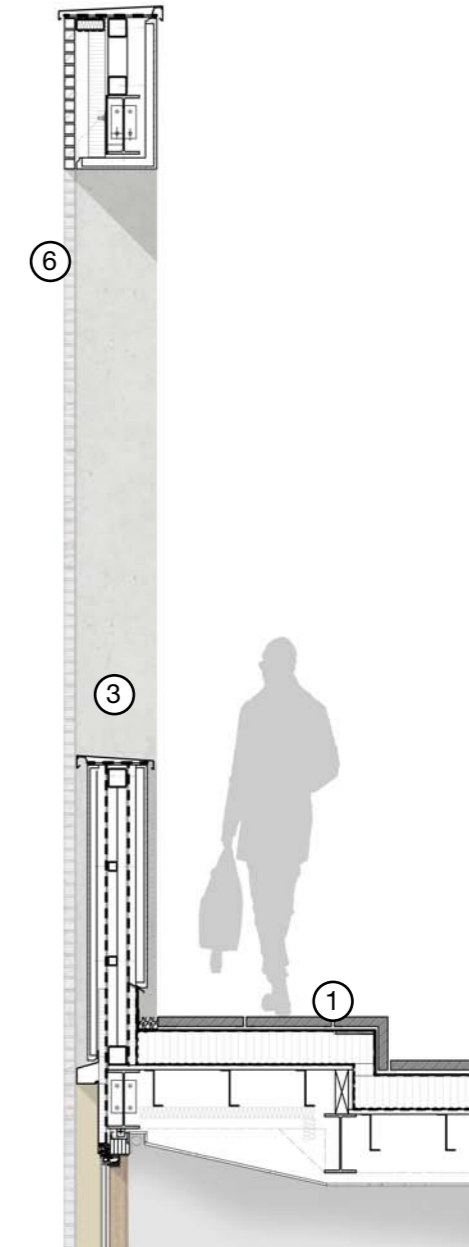
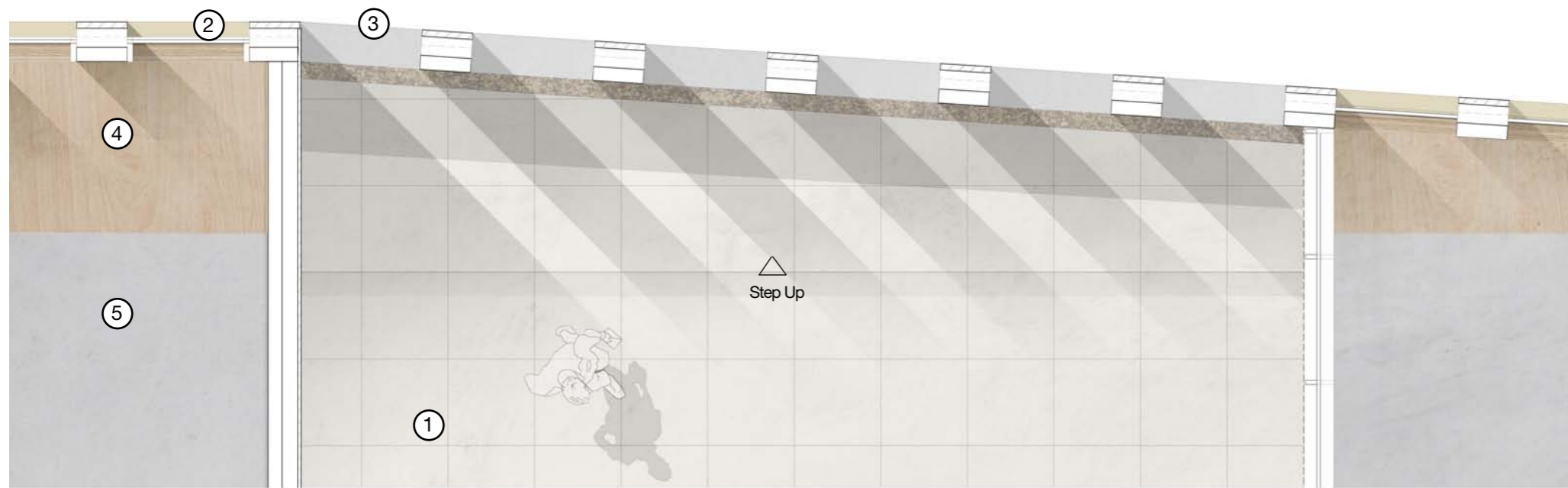


0 1m 2m

Condition 2b

Roof Terrace Balustrade Details

- ① Flag paving
- ② Anodised aluminium sill
- ③ GRC balustrade
- ④ Plywood floor
- ⑤ Screed finish
- ⑥ Brickwork facing

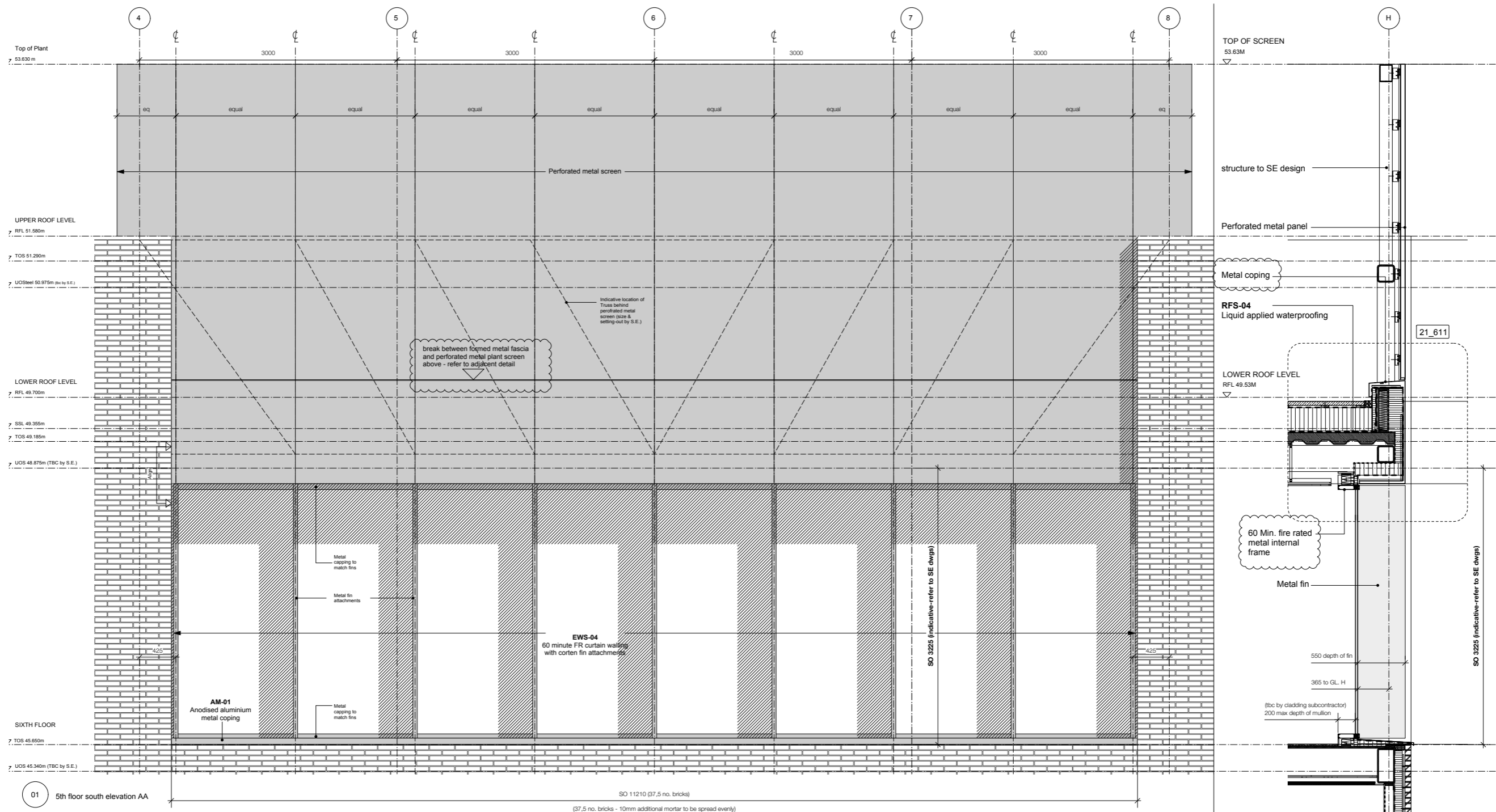


Condition 2b

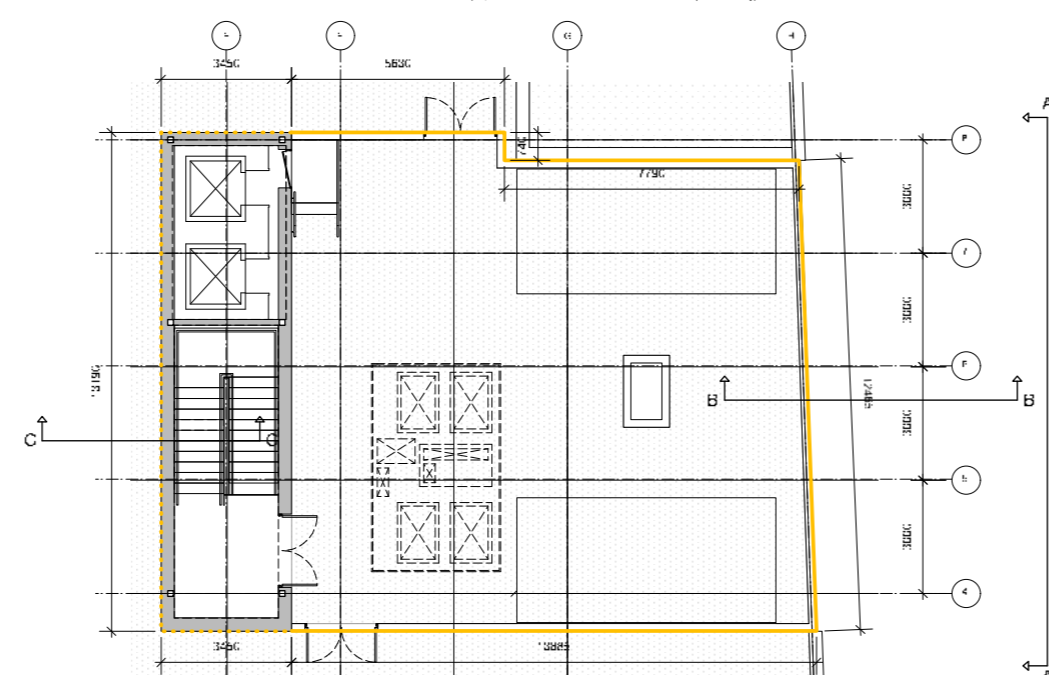
Plant Screen Elevation

- ① Hybrid curtain walling (timber internal)
- ② Brass fin attachments
- ③ Brickwork facing
- ④ Perforated brass plant screen





03 Section BB through south facade plant screen



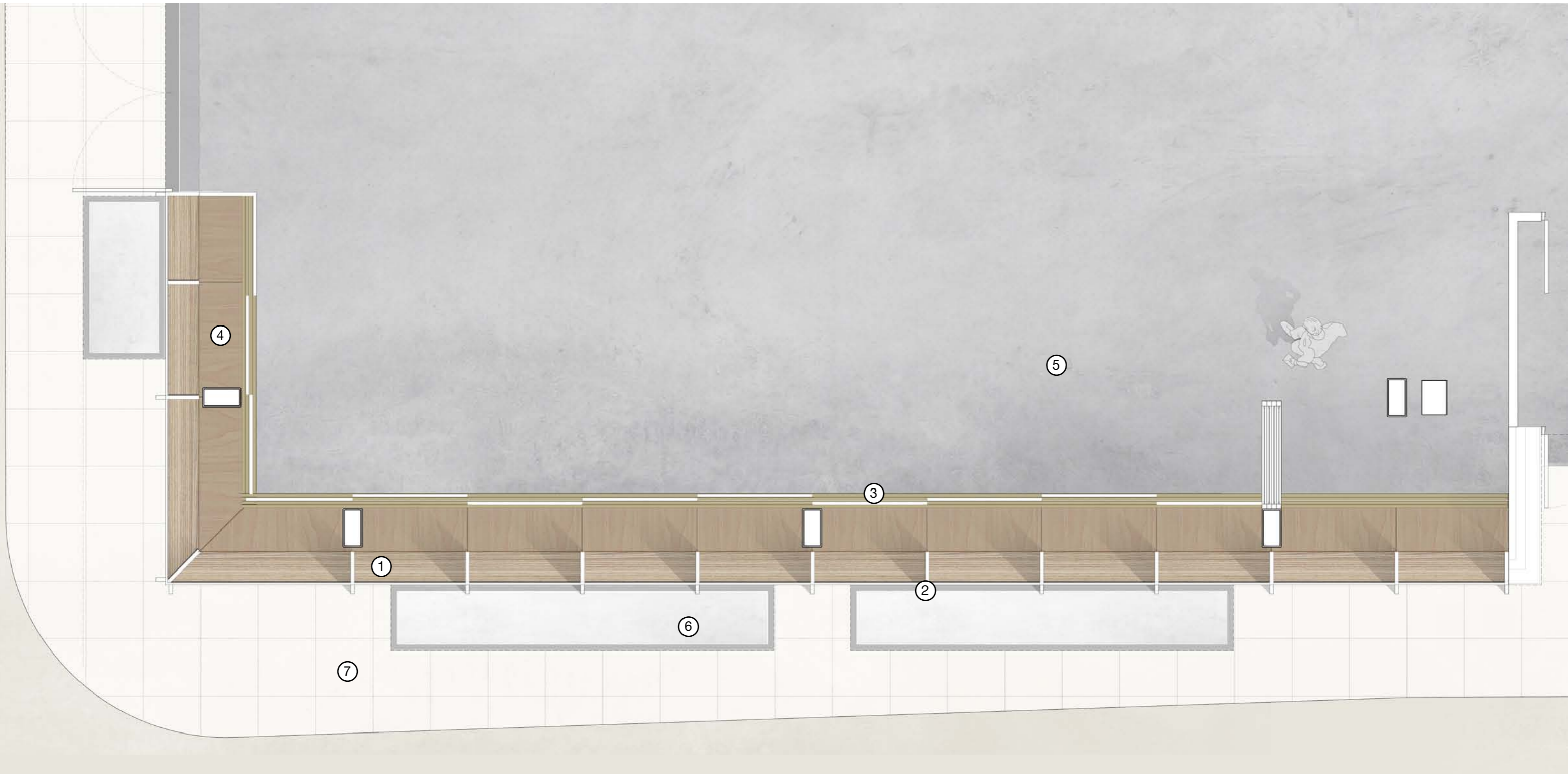
Condition 2b

Plant Screen Details

Condition 2c

Exhibition Facade / Shutter Plan

- ① Hybrid curtain walling (timber internal)
- ② Brass fin attachment
- ③ Internal gallery shutters
- ④ Plywood floor
- ⑤ Screed finish
- ⑥ Pavement light
- ⑦ Flag paving



Condition 2c

Exhibition Facade / Shutter Section

