

Edge parapet
Block B
+105775

Eighth FFL
+101650

Seventh FFL
+99400

Block C
+95650

Block A
+92425

Fourth FFL
+88650

Block D
+85900

Second FFL
+82150

First FFL
+78900

Ground FFL
+75350

Basement 1 FFL
+71800

Basement 2 FFL
+68250



A	10.04.15	Revision to massing of Block A and B Revised parapet levels bubbled
/	01.10.14	Submitted for planning
revision	date	

DUGGAN MORRIS ARCHITECTS
 Duggan Morris Architects Ltd
 Unit 7, 16-24 Underwood street, London, N1 7JQ
 Telephone 020 7566 7440
 www.dugganmorrisarchitects.com

- Do not scale from this drawing
 - All dimensions to be checked on site by the Contractor
 - And such dimensions to be their responsibility
 - Report all drawing errors and omissions to the Architect
 - All dimensions in millimeters unless noted otherwise
 - If in doubt ask Contract Administrator

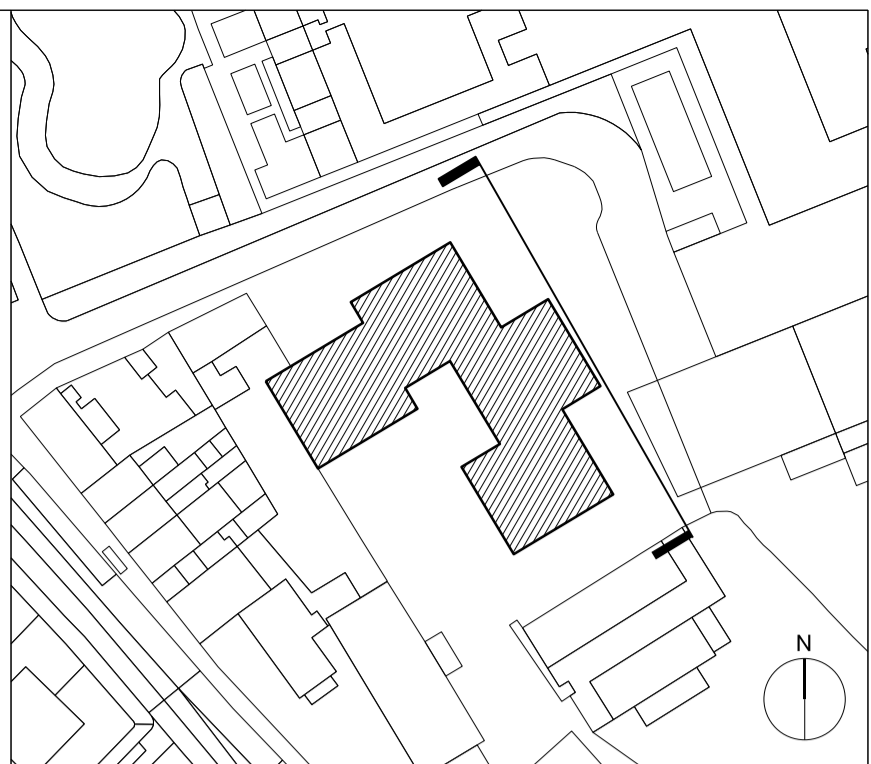
job title
BARTRAM'S HAMPSTEAD

drawing title/location
ELEVATION NORTH

status
PLANNING

scale
 1:100@A1
 1:200@A3

job no	source	zone	element	drawing no.	revision
A213	A		(01)	2 01	A



Edge parapet
Block B
+105775

Eighth FFL
+101850

Seventh FFL
+98400

Block C
+95650

Block A
+92425

Fourth FFL
+86650

Block D
+85900

Second FFL
+82150

First FFL
+78900

Ground FFL
+75350

Basement 1 FFL
+71800

Basement 2 FFL
+68250



revision	date	description
A	10.04.15	Revision to massing of Block A and B Revised parapet levels bubbled
/	01.10.14	Submitted for Planning

DUGGAN MORRIS ARCHITECTS
 Duggan Morris Architects Ltd
 Unit 7, 16-24 Underwood street, London, N1 7JQ
 Telephone 020 7566 7440
 www.dugganmorrisarchitects.com

- Do not scale from this drawing
- All dimensions to be checked on site by the Contractor
- And such dimensions to be their responsibility
- Report all drawing errors and omissions to the Architect
- All dimensions in millimeters unless noted otherwise
- If in doubt ask Contract Administrator

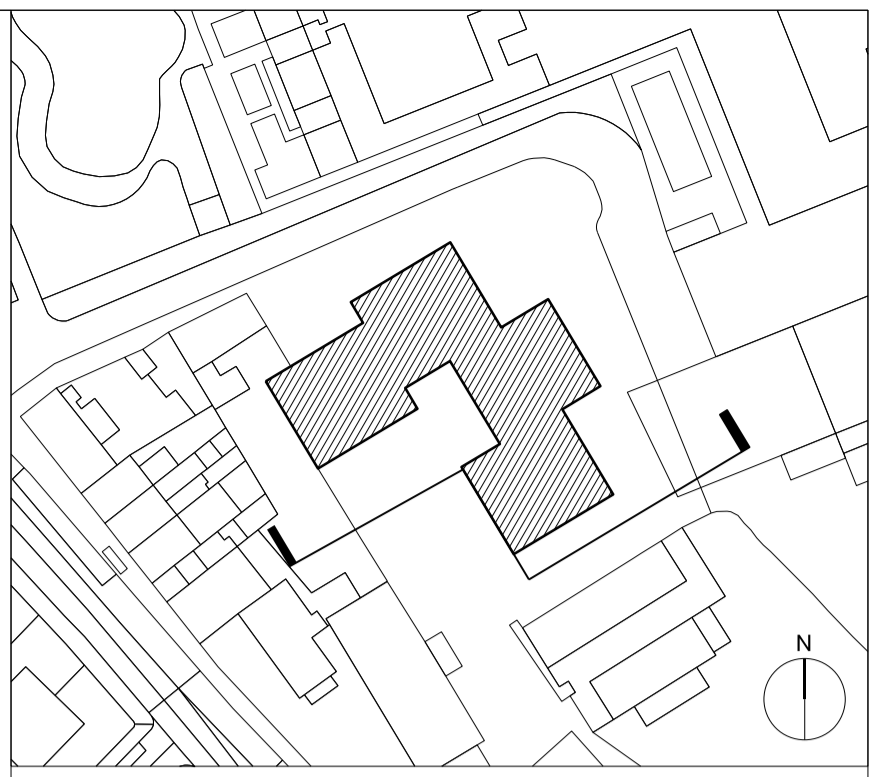
job title
BARTRAM'S HAMPSTEAD

drawing title/location
ELEVATION EAST

status
PLANNING

scale
 1:100@A1 1:200@A3

job no	source	zone	element	drawing no.	revision
A213	A		(01)	2 02	A



Edge parapet
Block B
+105775

Eighth FFL
+101650

Seventh FFL
+98400

Block C
+95850

Block A
+92425

Fourth FFL
+88850

Block D
+85900

Second FFL
+82150

First FFL
+78900

Ground FFL
+75350

Basement 1 FFL
+71800

Basement 2 FFL
+68250

A	10.04.15	Revision to massing of Block A and B
/	01.10.14	Revised parapet levels bubbled Submitted for planning
revision	date	

DUGGAN MORRIS ARCHITECTS
 Duggan Morris Architects Ltd
 Unit 7, 16-24 Underwood street, London, N1 7JQ
 Telephone 020 7566 7440
 www.dugganmorrisarchitects.com

- Do not scale from this drawing
 - All dimensions to be checked on site by the Contractor
 - And such dimensions to be their responsibility
 - Report all drawing errors and omissions to the Architect
 - All dimensions in millimeters unless noted otherwise
 - If in doubt ask Contract Administrator

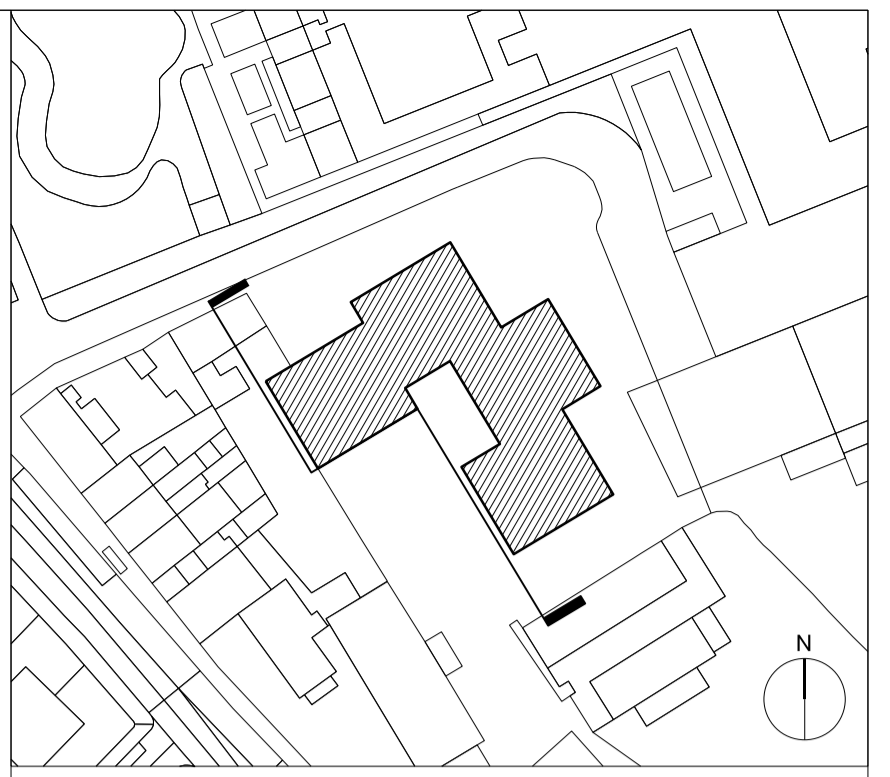
job title
BARTRAM'S HAMPSTEAD

drawing title/location
ELEVATION SOUTH

status
PLANNING

scale
 1:100@A1 1:200@A3

job no	source	zone	element	drawing no.	revision
A213	A		(01)	2 03	A



Edge parapet
Block B
+105775

Eighth FFL
+101650

Seventh FFL
+98400

Block C
+95650

Block A
+92425

Fourth FFL
+88650

Block D
+85900

Second FFL
+82150

First FFL
+78900

Ground FFL
+75350

Basement 1 FFL
+71800

Basement 2 FFL
+68250

A	10.04.15	Revision to massing of Block A and B
/	01.10.14	Submitted for planning
revision	date	

DUGGAN MORRIS ARCHITECTS
 Duggan Morris Architects Ltd
 Unit 7, 16-24 Underwood street, London, N1 7JQ
 Telephone 020 7566 7440
 www.dugganmorrisarchitects.com

- Do not scale from this drawing
- All dimensions to be checked on site by the Contractor
- And such dimensions to be their responsibility
- Report all drawing errors and omissions to the Architect
- All dimensions in millimeters unless noted otherwise
- If in doubt ask Contract Administrator

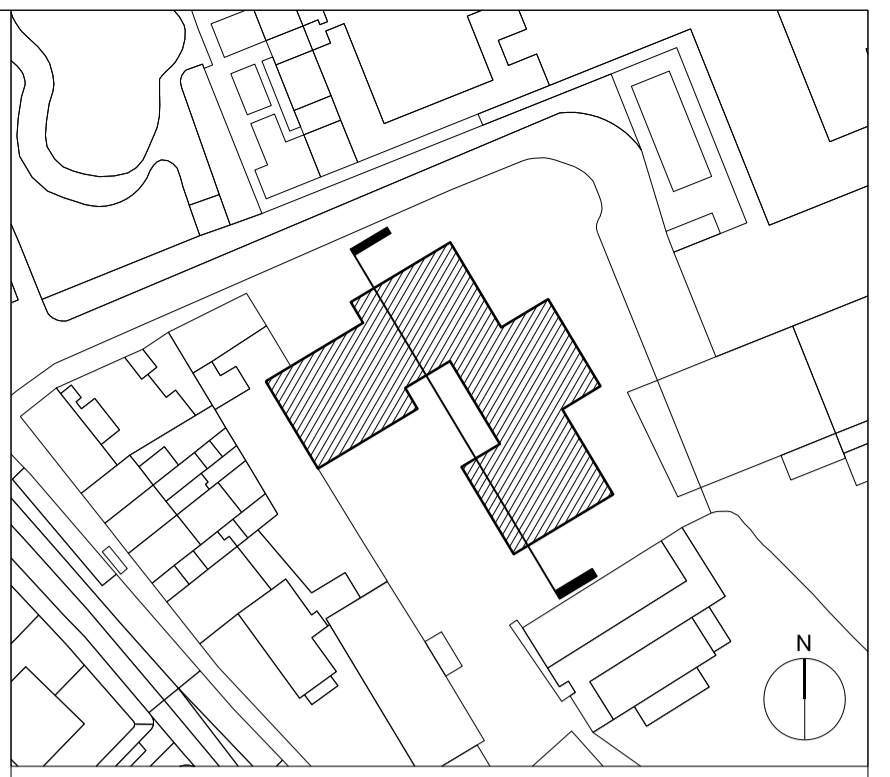
job title
BARTRAM'S HAMPSTEAD

drawing title/location
ELEVATION WEST

status
PLANNING

scale
 1:100@A1 1:200@A3

job no	source	zone	element	drawing no.	revision
A213	A		(01)	2 04	A



Edge parapet
Block B
+105775

Eighth FFL
+101850

Seventh FFL
+98400

Block C
+95650

Block A
+92425

Fourth FFL
+88650

Block D
+85900

Second FFL
+82150

First FFL
+78900

Ground FFL
+75350

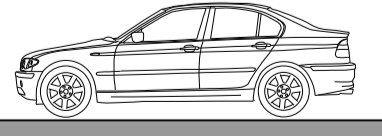
Basement 1 FFL
+71800

Basement 2 FFL
+68250



Typical Basement FFL
+68250

Car Storage FFL
+67850



A	10.04.15	Revision to massing of Block A and B Revised parapet heights bubbled
/	01.10.14	Submitted for Planning
revision	date	

DUGGAN MORRIS ARCHITECTS
 Duggan Morris Architects Ltd
 Unit 7, 16-24 Underwood street, London, N1 7JQ
 Telephone 020 7566 7440
 www.dugganmorrisarchitects.com

- Do not scale from this drawing
 - All dimensions to be checked on site by the Contractor
 - And such dimensions to be their responsibility
 - Report all drawing errors and omissions to the Architect
 - All dimensions in millimeters unless noted otherwise
 - If in doubt ask Contract Administrator

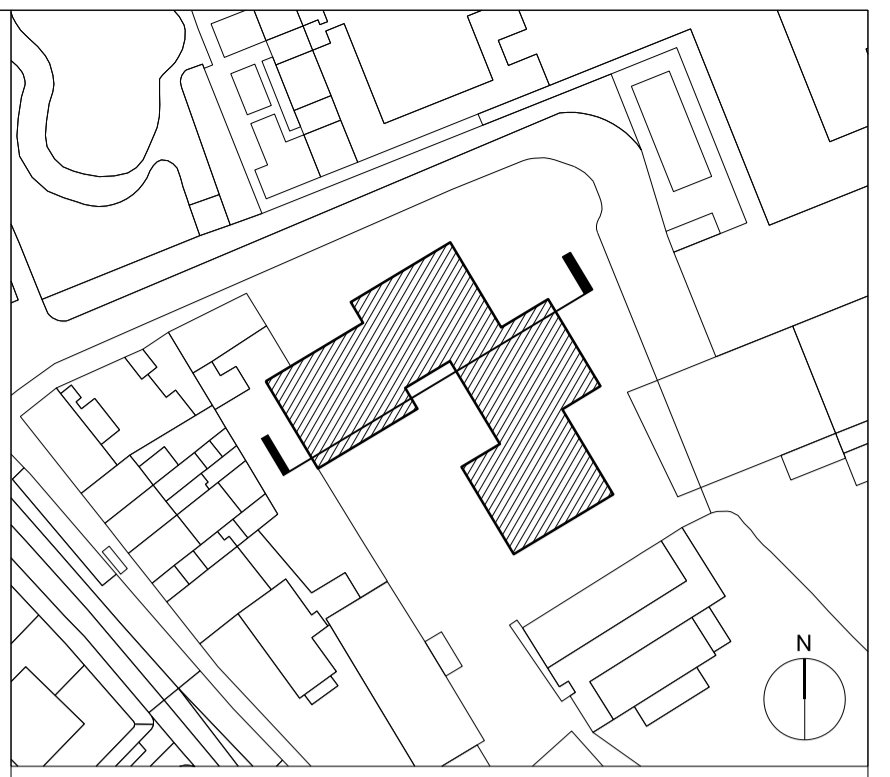
job title
BARTRAM'S HAMPSTEAD

drawing title/location
SECTION A-A

status **PLANNING**

scale 1:100@A1 1:200@A3

job no	source	zone	element	drawing no.	revision
A213	A		(01)	3 01	A



Edge parapet
Block B
+105775

Eighth FFL
+101650

Seventh FFL
+98400

Block C
+95650

Block A
+92425

Fourth FFL
+88650

Block D
+85900

Second FFL
+82150

First FFL
+78900

Ground FFL
+75350

Basement 1 FFL
+1600

A	10.04.15	Revision to massing of Block A and B
/	01.10.14	Submitted for planning
revision	date	

DUGGAN MORRIS ARCHITECTS
 Duggan Morris Architects Ltd
 Unit 7, 16-24 Underwood street, London, N1 7JQ
 Telephone 020 7566 7440
 www.dugganmorrisarchitects.com

- Do not scale from this drawing
 - All dimensions to be checked on site by the Contractor
 - And such dimensions to be their responsibility
 - Report all drawing errors and omissions to the Architect
 - All dimensions in millimeters unless noted otherwise
 - If in doubt ask Contract Administrator

job title
 BARTRAM'S HAMPSTEAD

drawing title/location
 SECTION B-B

status PLANNING

scale 1:100@A1 1:200@A3

job no	source	zone	element	drawing no.	revision
A213	A		(01)	3 02	A