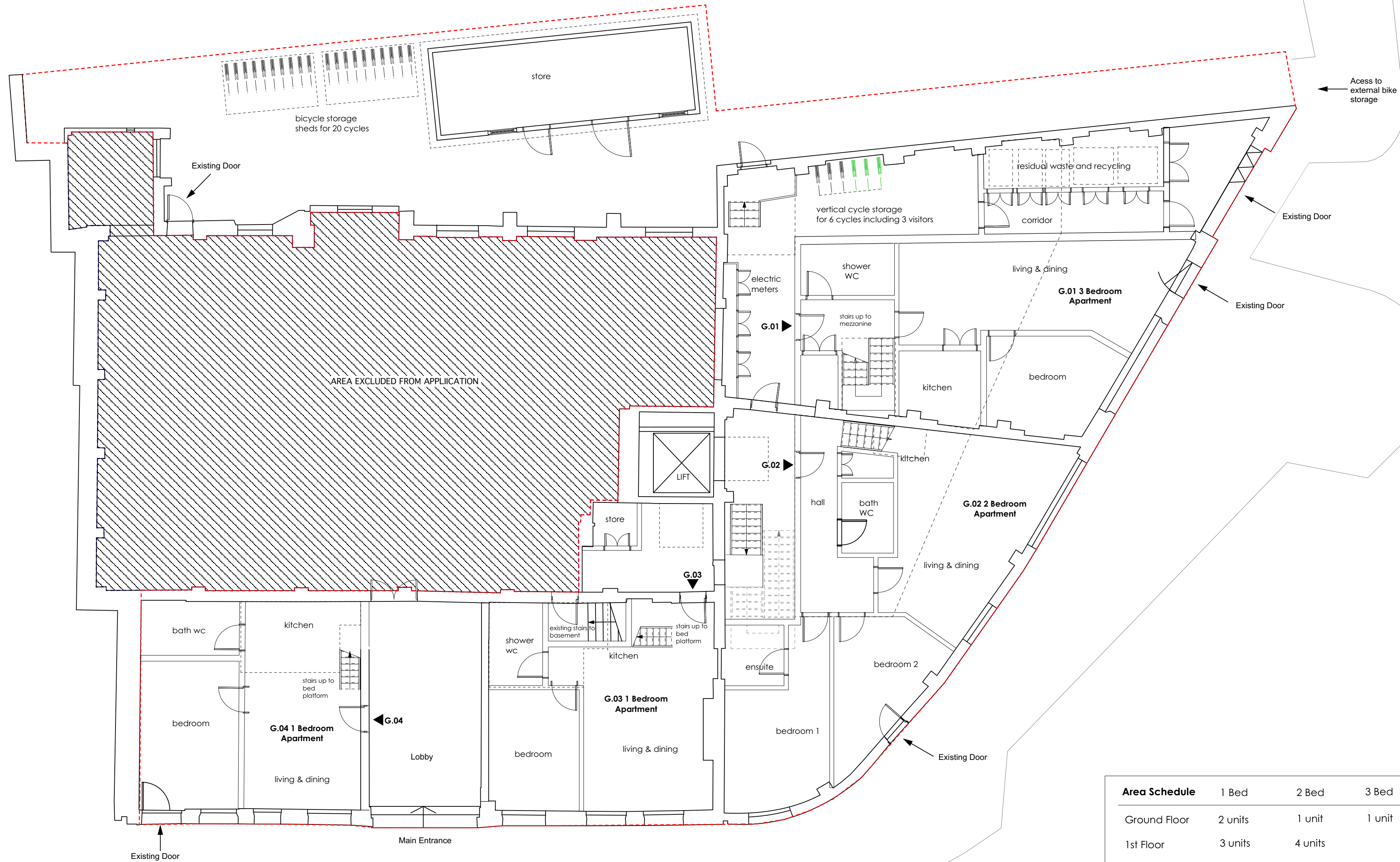


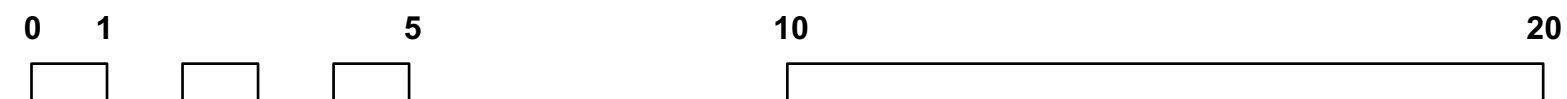
KILBURN VALE



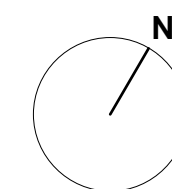
Area Schedule	1 Bed	2 Bed	3 Bed	4 Bed	Total per floor
Ground Floor	2 units	1 unit	1 unit		4 units
1st Floor	3 units	4 units			7 units
2nd Floor	3 units	4 units			7 units
3rd Floor			1 unit	1 unit	2 units
Total					20 units

Proposed Ground Floor Plan

BELSIZE ROAD



rev A 12.02.15 - Floor plans updated following meeting with client
 rev B 10.04.15 - Floor plans updated following meeting with client
 rev C 14.04.15 - Bike storage updated



PRIOR APPROVAL ISSUE

A2 1:100 @ A2

 <small>Alan Power Architects Ltd 13 Needham Road London, W11 2RP Tel. 020 7229 9375 Fax. 020 7221 4172</small>	DRAWING Proposed Ground Floor Plan	DRWG. N°. 544 - 100
	PROJECT 254-256 BELSIZE RD LONDON NW6 4BT	Rev. C
	CLIENT EMPIRE COMMUNICATIONS LTD	Scale 1:100 @ A2
		Date April 2015 Drawn NK

DO NOT SCALE FROM THIS DRAWING. ALL DIMENSIONS TO BE CHECKED ON SITE AND DISCREPANCIES REPORTED TO ARCHITECT