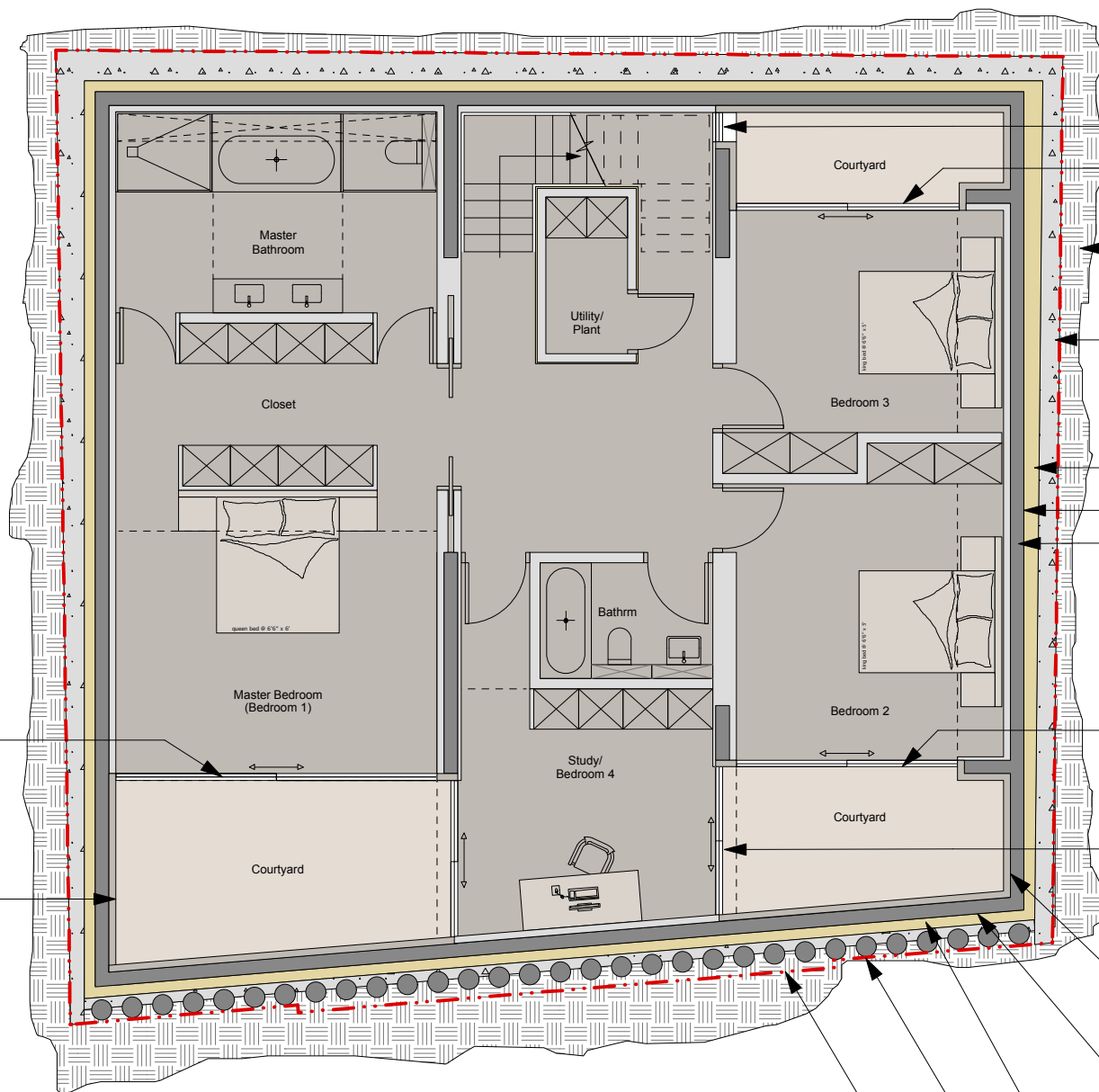


1m 2m 3m 4m 5m 6m 7m 8m 9m 10m

1:100



Aluminium framed, double glazed sliding doors to internal courtyards

External render system to courtyard walls

Fixed, aluminium framed, double glazing

Aluminium framed, double glazed sliding doors to internal courtyards

Earth

New mass concrete underpinning beneath existing and retained garden walls within site boundary, to existing S.E specs.

Insulation

Waterproof membrane

Waterproof RC liner wall to S.E Specs

Aluminium framed, double glazed sliding doors to internal courtyards

Fixed, aluminium framed, double glazing

Painted external render system to courtyards

Waterproof concrete liner wall with additional waterproof membrane to external face

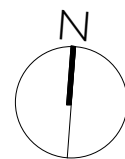
External insulation between concrete liner wall and piles

Mass concrete contig piles to front elevation, within site boundary line. New garden wall built on pile cap

Site boundary shown red dashed

NOTES:
 · DO NOT SCALE FROM THIS DRAWING.
 · ALL DIMENSIONS TO BE CHECKED ON SITE.
 · ALL OMISSIONS AND DISCREPANCIES TO BE REPORTED TO THE ARCHITECT IMMEDIATELY

APPROX NORTH POINT



TF ARCHITECTURE

2-3 WOODSTOCK STREET
 LONDON W1C 2AB

T. 020 7052 0756
 F. 020 7052 0757
 E. info@tfarchitecture.com

STATUS	PLANNING			
PROJECT	ST PAULS MEWS, LONDON, NW1 9TZ			
DRAWING TITLE	20.03.2015	PROPOSED LWR GROUND FLOOR PLAN		
DATE 03.2014	SCALE 1:100@A3	JOB NO. 448	DRWG NO. (00)_111	REV. A