

PLANT SCHEDULE

Trees

Extra Heavy Standard planted in accordance with Detail 862.10 & Landscape Specification section Q31.

| Species | Size | Girth(cm) | Height(cm) | Root Con. | Quantity |
|----------------------------|------|-----------|------------|-----------|----------|
| Betula utilis jacquemontii | EHS | 14-16 | 4.25-6.0 | Container | 1 |

Feature Shrubs

Planted into 600 mm depth topsoil and in accordance with Landscape Specification Q31.

| Species | Size(cm) | Pot Size(Lt) | Quantity |
|-----------------------------|----------|--------------|----------|
| Amelanchier lamarckii | 80-100 | 12L | 3 |
| Philadelphus 'Belle Etoile' | 60-80 | 10L | 1 |
| Ilex aquifolium 'Amber' | 60-80 | 10L | 6 |
| Viburnum burkwoodii | 60-80 | 10L | 8 |

Hedging

Planted into 600 mm depth topsoil and in accordance with Landscape Specification section Q31.

Plant single row, with 200mm between plants.

| Species | Size(cm) | Pot Size(Lt) | Quantity |
|-----------------------------------|----------|--------------|----------|
| Buxus sempervirens 'Suffruticosa' | 10-15 | 2L | 72 |

Ornamental Shrubs

Planted into 600 mm depth topsoil and in accordance with Landscape Specification section Q31.

| Species | Size(cm) | Pot Size(Lt) | No. / m ² | Quantity |
|---|----------|--------------|----------------------|----------|
| Berberis thunbergii 'Atropurpurea Nana' | 20-30 | 2L | 4 | 23 |
| Choisya ternata 'Sundance' | 40-60 | 3L | 3 | 13 |
| Cornus sanguinea 'Winter Beauty' | 30-40 | 3L | 4 | 10 |
| Cotoneaster salicifolius 'Gnom' | 30-40D | 2L | 4 | 23 |
| Elaeagnus ebbingei | 40-60 | 3L | 4 | 21 |
| Escallonia laevis 'Gold Ellen' | 40-60 | 3L | 4 | 59 |
| Euonymus fortunei 'Emerald Gaiety' | 15-20D | 2L | 4 | 111 |
| Hebe 'Margret' | 20-30 | 2L | 4 | 11 |
| Hebe rakaiensis | 15-20 | 2L | 4 | 56 |
| Hedera helix 'Variegata' | 40-60 | 2L | 6 | 58 |
| Lavandula angustifolia 'Hidcote' | 15-20 | 2L | 4 | 97 |
| Lonicera pileata | 20-30D | 2L | 4 | 61 |
| Mahonia aquifolium 'Atropurpurea' | 30-40 | 3L | 3 | 25 |
| Osmanthus armatus | 30-40 | 3L | 4 | 23 |
| Osmanthus burkwoodii | 30-40 | 3L | 2 | 37 |
| Philadelphus 'Sybille' | 40-60 | 3L | 3 | 13 |
| Ribes sanguineum 'Brocklebankii' | 30-40 | 2L | 3 | 7 |
| Rosa Magic Carpet | 20-30 | 2L | 4 | 101 |
| Rosmarinus officinalis 'Prostratus' | 20-30D | 2L | 4 | 5 |
| Ruscus aculeatus | 30-40 | 3L | 4 | 42 |
| Sarcococca confusa | 20-30 | 2L | 4 | 23 |
| Skimmia japonica 'Bronze Knight' | 30-40 | 3L | 4 | 71 |
| Skimmia japonica 'Rubella' | 30-40 | 3L | 4 | 76 |
| Viburnum davidii | 20-30 | 3L | 4 | 12 |
| Vinca minor | 10-20 | 2L | 4 | 182 |

Ornamental Herbaceous / Ferns

Planted into 600 mm depth topsoil and in accordance with Landscape Specification section Q31.

| Species | Pot Size(Lt) | No. / m ² | Quantity |
|---------------------------------------|--------------|----------------------|----------|
| Alchemilla mollis | 2L | 5 | 35 |
| Anemone hupehensis 'Splendens' | 2L | 4 | 17 |
| Bergenia cordifolia 'Purpurea' | 2L | 5 | 53 |
| Chamaemelum nobile | 1L | 4 | 5 |
| Dryopteris erythrosora | 2L | 4 | 5 |
| Geranium macro. 'Ingwersen's Variety' | 2L | 5 | 63 |
| Geranium macro. 'Spessart' | 2L | 5 | 78 |
| Geranium phaeum | 2L | 5 | 81 |
| Heuchera Ebony and Ivory | 2L | 5 | 92 |
| Hosta 'Honeybells' | 2L | 5 | 35 |
| Lamium maculatum 'Pink Pearls' | 2L | 6 | 20 |
| Lamium maculatum 'White Nancy' | 2L | 5 | 75 |
| Liriope muscari | 2L | 5 | 207 |
| Omphalodes cappadocica 'Starry Eyes' | 2L | 5 | 70 |
| Salvia officinalis | 2L | 4 | 5 |
| Thymus citriodorus 'Aureus' | 2L | 4 | 5 |

Climbers

Planted into 600 mm depth topsoil and in accordance with Landscape Specification section Q31.

| Species | Size(cm) | Pot Size(Lt) | Quantity |
|------------------------------|----------|--------------|----------|
| Clematis 'Jackmanii' | 60-80 | 2L | 3 |
| Clematis cirrhosa 'Freckles' | 60-80 | 2L | 7 |
| Hydrangea petiolaris | 60-80 | 2L | 9 |
| Lonicera japonica 'Halliana' | 60-80 | 2L | 3 |
| Rosa Zepherine Drouhin | 60-80 | 2L | 9 |

Bulbs

Planted into 600 mm depth topsoil and in accordance with Landscape Specification section Q31.

| Species | Size | Quantity |
|--------------------|-------|----------|
| Allium Firmament | 4/5 | 57 |
| Narcissus 'Actaea' | 10/12 | 243 |
| Narcissus 'Curlew' | 10/12 | 546 |

Turf

In accordance with Landscape Specification section Q30.

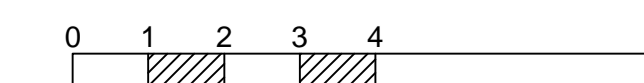
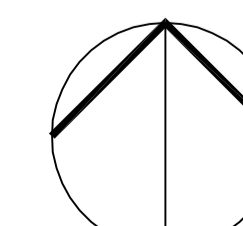
Medallion Turf supplied by Rolawn Ltd., Elvington York YO41 4XR. Turf laid on a minimum 100mm depth topsoil reduced to a fine till 10mm down particles.

Total Area to be calculated on site by landscape contractor.

PRELIMINARY

NOTES

- 1) Drawing based on GMA Architects Drawing Wellesley plan W100 & Broad Oak Tree Consultants Ltd Tree report & Tree constraint plan J39.24/01
- 2) Plant schedule is for BFLA drawings 862.03 & 04



| | | | | |
|-----|----------|--|---------|-------|
| A | 15.05.13 | Planting adjusted following increase in path width and revision to BFLA drawing 862.04 | ELG/ RP | GB |
| Rev | Date | Details | Drawn | Check |

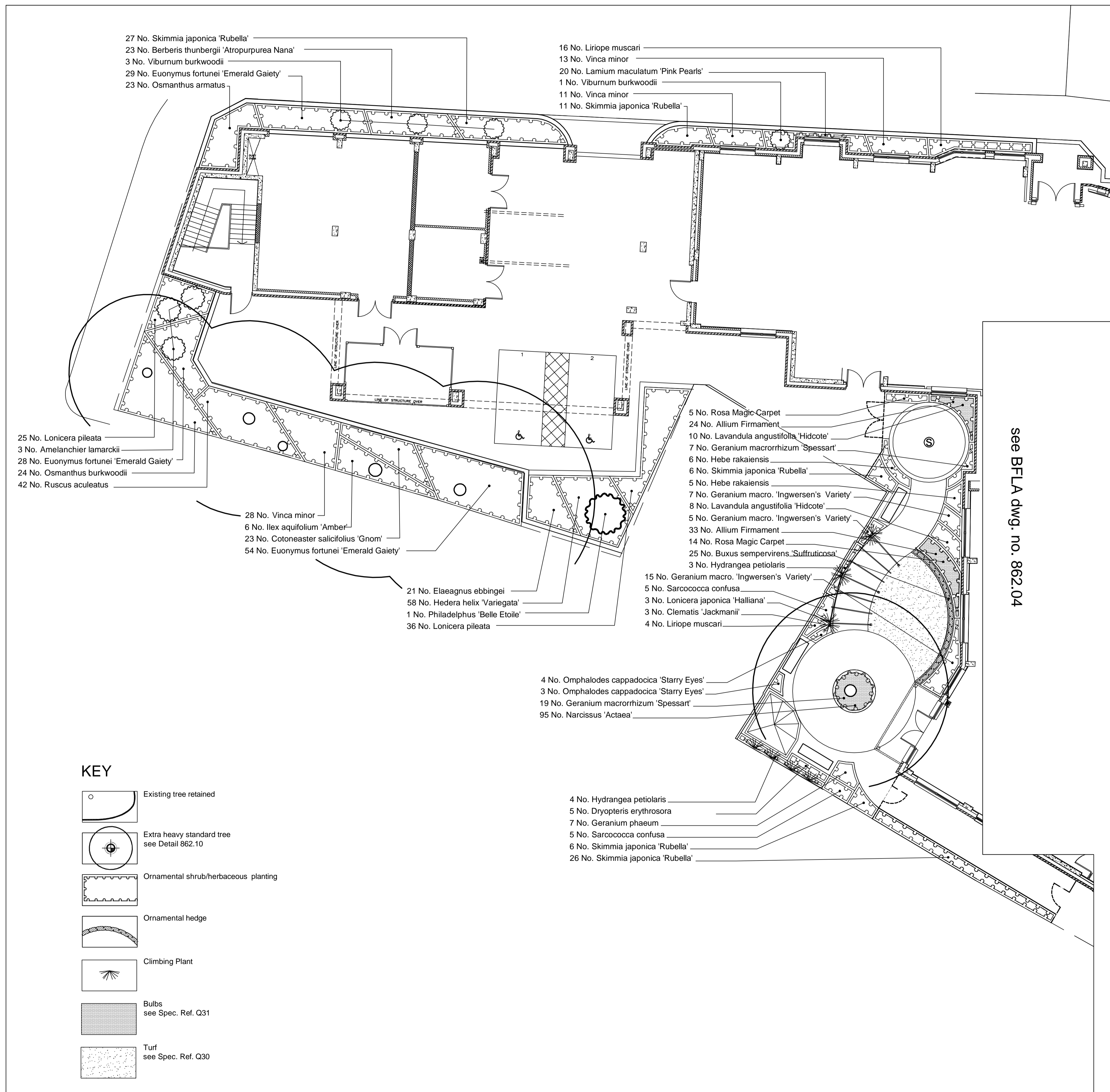


PROJECT
Camden HOP
Wellesley Road

DRAWING
Planting Plan
Sheet 1 of 2

| | | | |
|---------|-----------|----------|-----|
| DRAWN | DATE | DWG. No. | REV |
| ELG | June 2012 | 862.03 A | |
| CHECKED | SCALE | | |
| KtD | 1:100@A1 | | |

BELL FISCHER BFLA
160 Chiltern Drive Surbiton Surrey KT5 8LS
020 8390 6477 020 8399 7903
landscape@bellfischer.co.uk
www.bellfischer.co.uk
LANDSCAPE ARCHITECTS



see BFLA dwg. no. 862.04

KEY

- Existing tree retained
- Extra heavy standard tree see Detail 862.10
- Ornamental shrub/herbaceous planting
- Ornamental hedge
- Climbing Plant
- Bulbs see Spec. Ref. Q31
- Turf see Spec. Ref. Q30

- 4 No. Hydrangea petiolaris
- 5 No. Dryopteris erythrosora
- 7 No. Geranium phaeum
- 5 No. Sarcococca confusa
- 6 No. Skimmia japonica 'Rubella'
- 26 No. Skimmia japonica 'Rubella'

- 4 No. Omphalodes cappadocica 'Starry Eyes'
- 3 No. Omphalodes cappadocica 'Starry Eyes'
- 19 No. Geranium macrorrhizum 'Spessart'
- 95 No. Narcissus 'Actaea'

- 15 No. Geranium macro. 'Ingwersen's Variety'
- 5 No. Sarcococca confusa
- 3 No. Lonicera japonica 'Halliana'
- 3 No. Clematis 'Jackmanii'
- 4 No. Liriope muscari

- 5 No. Rosa Magic Carpet
- 24 No. Allium Firmament
- 10 No. Lavandula angustifolia 'Hidcote'
- 7 No. Geranium macrorrhizum 'Spessart'
- 6 No. Hebe rakaiensis
- 6 No. Skimmia japonica 'Rubella'
- 5 No. Hebe rakaiensis
- 7 No. Geranium macro. 'Ingwersen's Variety'
- 8 No. Lavandula angustifolia 'Hidcote'
- 5 No. Geranium macro. 'Ingwersen's Variety'
- 33 No. Allium Firmament
- 14 No. Rosa Magic Carpet
- 25 No. Buxus sempervirens 'Suffruticosa'
- 3 No. Hydrangea petiolaris

- 5 No. Rosa Magic Carpet
- 24 No. Allium Firmament
- 10 No. Lavandula angustifolia 'Hidcote'
- 7 No. Geranium macrorrhizum 'Spessart'
- 6 No. Hebe rakaiensis
- 6 No. Skimmia japonica 'Rubella'
- 5 No. Hebe rakaiensis
- 7 No. Geranium macro. 'Ingwersen's Variety'
- 8 No. Lavandula angustifolia 'Hidcote'
- 5 No. Geranium macro. 'Ingwersen's Variety'
- 33 No. Allium Firmament
- 14 No. Rosa Magic Carpet
- 25 No. Buxus sempervirens 'Suffruticosa'
- 3 No. Hydrangea petiolaris

- 27 No. Skimmia japonica 'Rubella'
- 23 No. Berberis thunbergii 'Atropurpurea Nana'
- 3 No. Viburnum burkwoodii
- 29 No. Euonymus fortunei 'Emerald Gaiety'
- 23 No. Osmanthus armatus

- 16 No. Liriope muscari
- 13 No. Vinca minor
- 20 No. Lamium maculatum 'Pink Pearls'
- 1 No. Viburnum burkwoodii
- 11 No. Vinca minor
- 11 No. Skimmia japonica 'Rubella'

- 25 No. Lonicera pileata
- 3 No. Amelanchier lamarckii
- 28 No. Euonymus fortunei 'Emerald Gaiety'
- 24 No. Osmanthus burkwoodii
- 42 No. Ruscus aculeatus

- 28 No. Vinca minor
- 6 No. Ilex aquifolium 'Amber'
- 23 No. Cotoneaster salicifolius 'Gnom'
- 54 No. Euonymus fortunei 'Emerald Gaiety'

- 21 No. Elaeagnus ebbingei
- 58 No. Hedera helix 'Variegata'
- 1 No. Philadelphus 'Belle Etoile'
- 36 No. Lonicera pileata