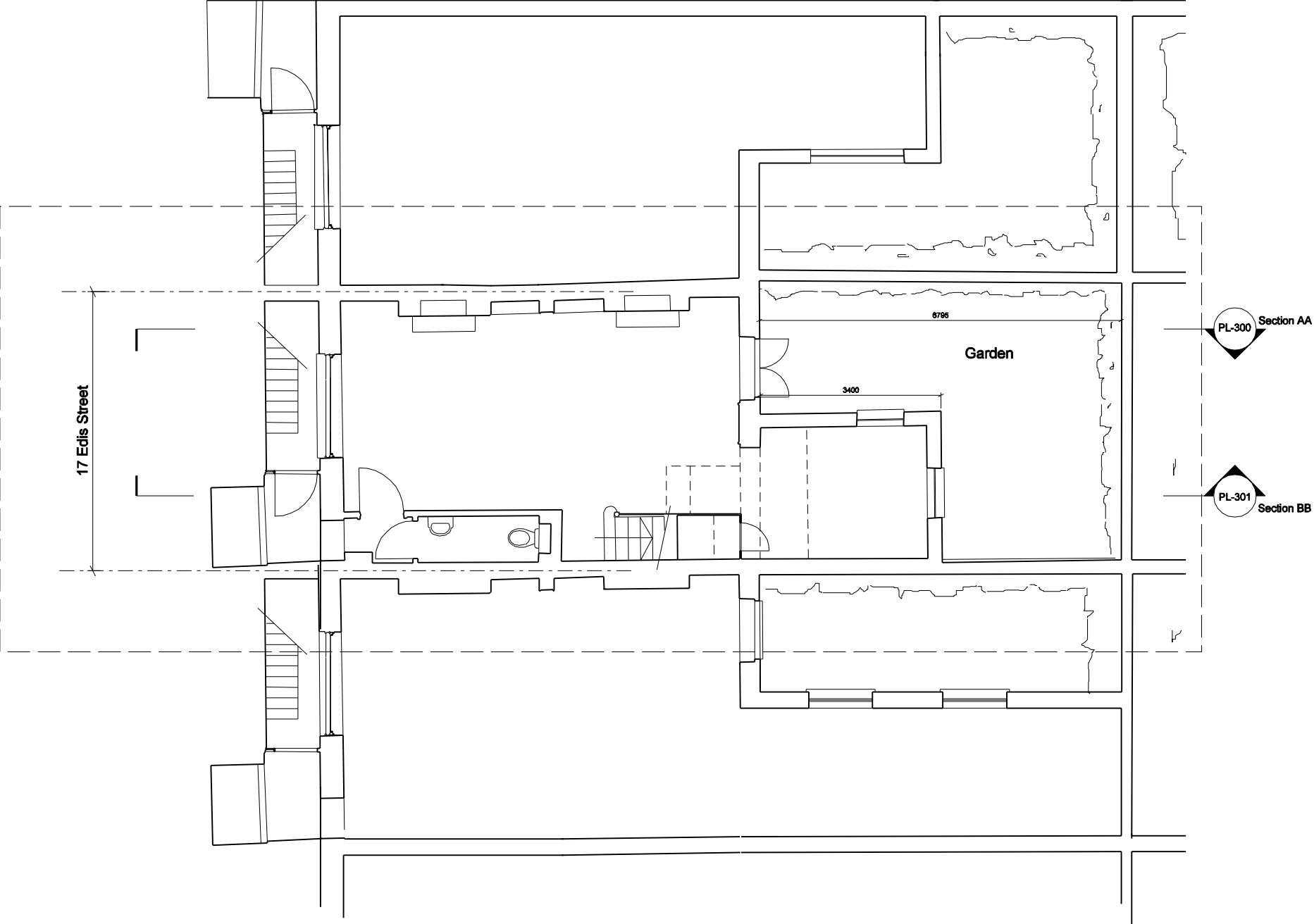
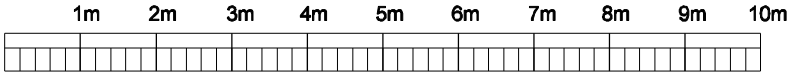
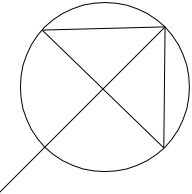


notes

The ownership of the copyright of this drawing is retained by the architect whose consent must be obtained before any use or reproduction of the drawing or part thereof can be made. This drawing should be read in conjunction with all other relevant documentation



Existing Lower Ground



/	27.04.2015	Planning
rev	date	amendment
project	17 Edis Street	
scale	1:100 @ A3	
drawing	Existing lower Ground plan	
drawing no	PL - 100	

Paul+O Architects Ltd
unit 8, 73 maygrove road
west hampstead
london nw6 2eg
t/f +44 020 7604 3818
www.paul-o-architects.com