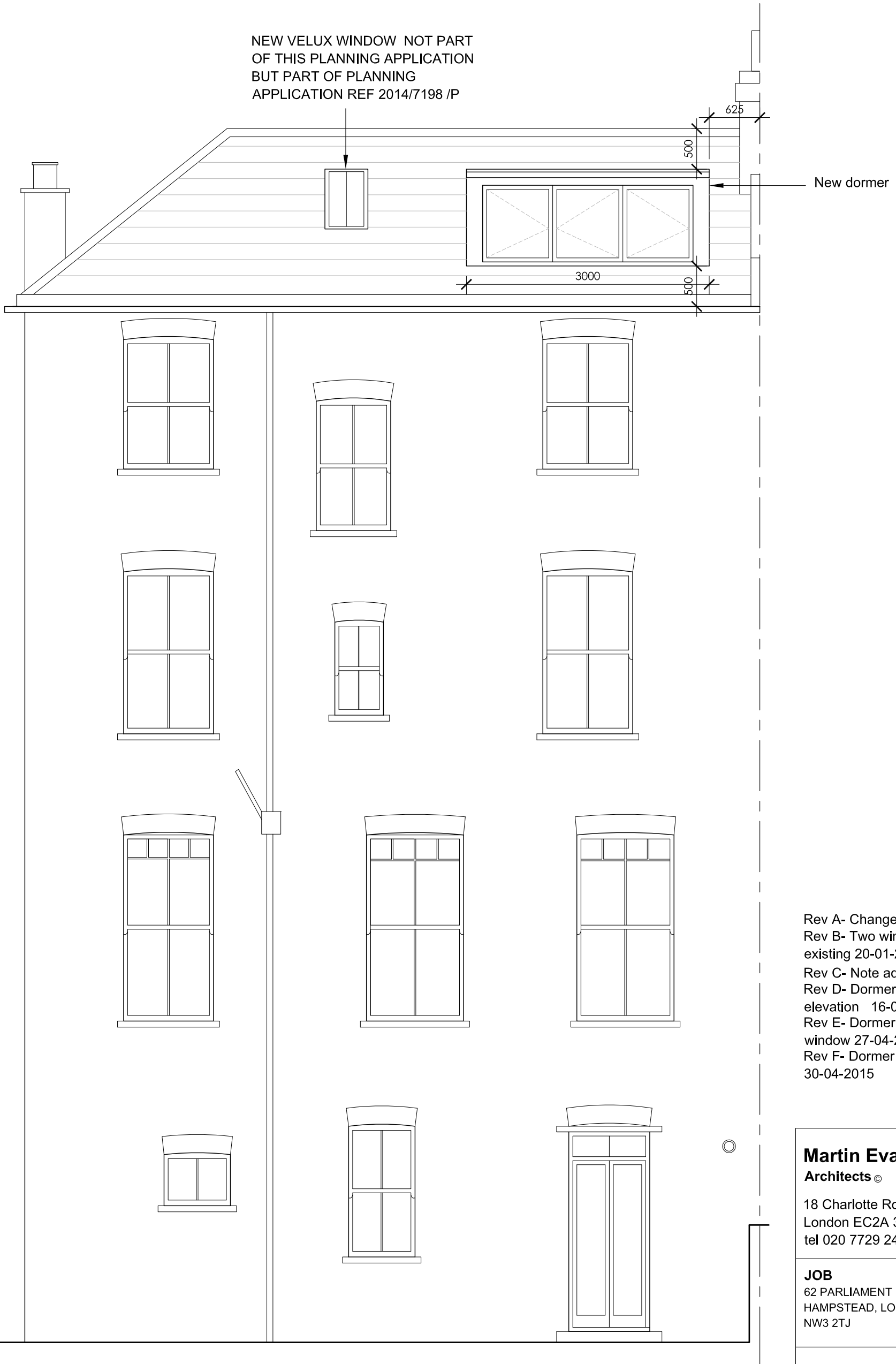


NOTES

DO NOT SCALE FROM THIS DRAWING

PLANNING

NEW VELUX WINDOW NOT PART
OF THIS PLANNING APPLICATION
BUT PART OF PLANNING
APPLICATION REF 2014/7198 /P



- Rev A- Change layout 05-12-2014
- Rev B- Two windows revised to be existing 20-01-2015
- Rev C- Note added 27-01-2015
- Rev D- Dormer added in the rear elevation 16-03-2015
- Rev E- Dormer modified without side window 27-04-2015
- Rev F- Dormer size modified 30-04-2015

Martin Evans
Architects ©

18 Charlotte Road
London EC2A 3PB
tel 020 7729 2474

JOB
62 PARLIAMENT HILL
HAMPSTEAD, LONDON
NW3 2TJ

TITLE
PROPOSED REAR ELEVATION

DATE	17.11.2014
SCALE	1:50 @ A3
DRAWN	GG

DRAWING NO. PAR-PL-GA-07F

PROPOSED REAR ELEVATION

