






Notes:

- do not scale from this drawing
- survey indicative only
- proposals are subject to utilities surveys
- proposals are subject to planning consultation with relevant consultants information
- drawing to be read in conjunction with relevant specifications

BRICK SPECIFICATION

-  Brick type 1 - 'First Quality Multi' by Freshfield Lane Brickworks
-  Brick type 2 - white glazed tile by Craven Dunhill, ref 'a3'
-  Brick type 3 - red glazed tiles by Freshfield Lane Brickworks or ref's 27111, 27112 & 27113
-  Brick type 4 - 'White Engobe' matt white brick by 'Isstock'
-  Brick type 5 - 'Slapfield Stock' by All About Bricks

PLEASE REFER TO DRAWING PLC.24.11 FOR TILE TYPES

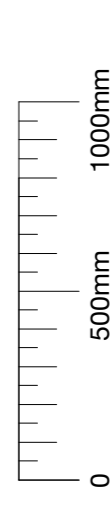
20/04/15 - Condition 24 Issue
Revisions

PLANNING CONDITIONS

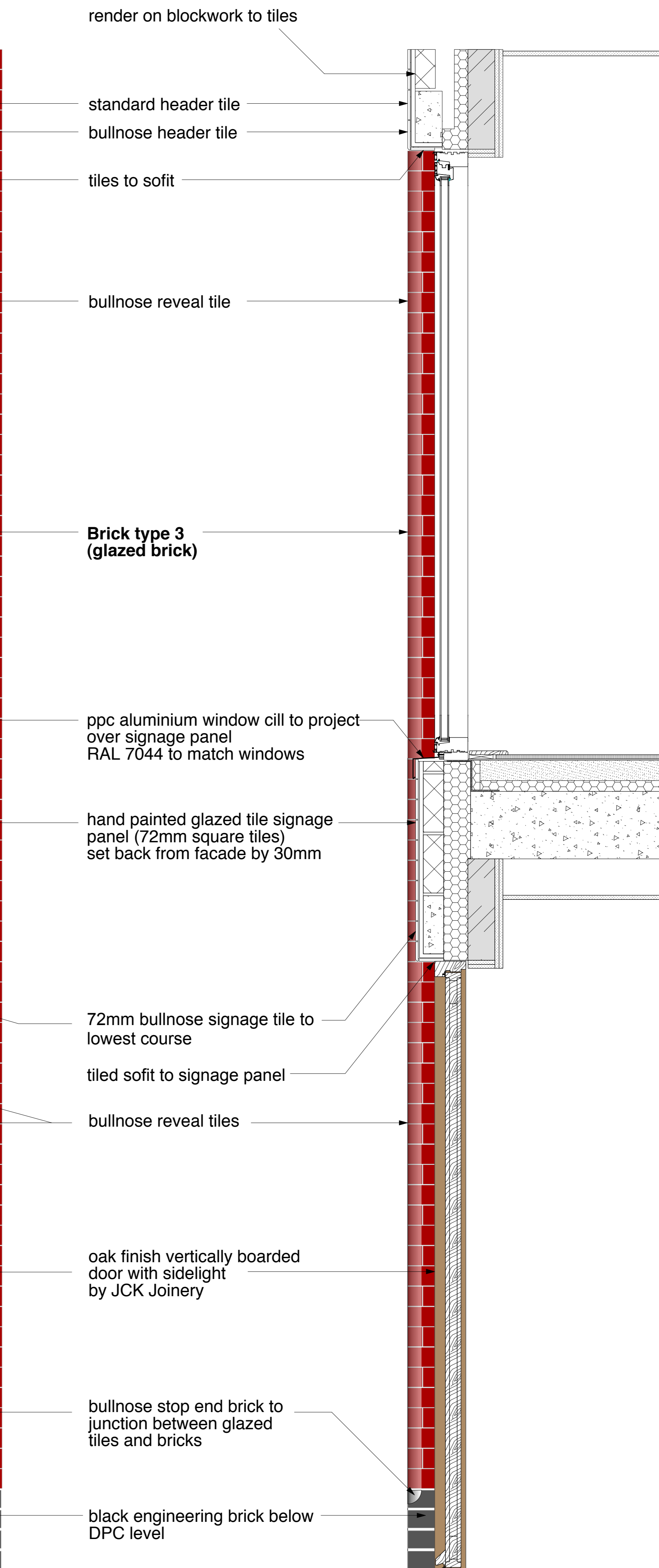
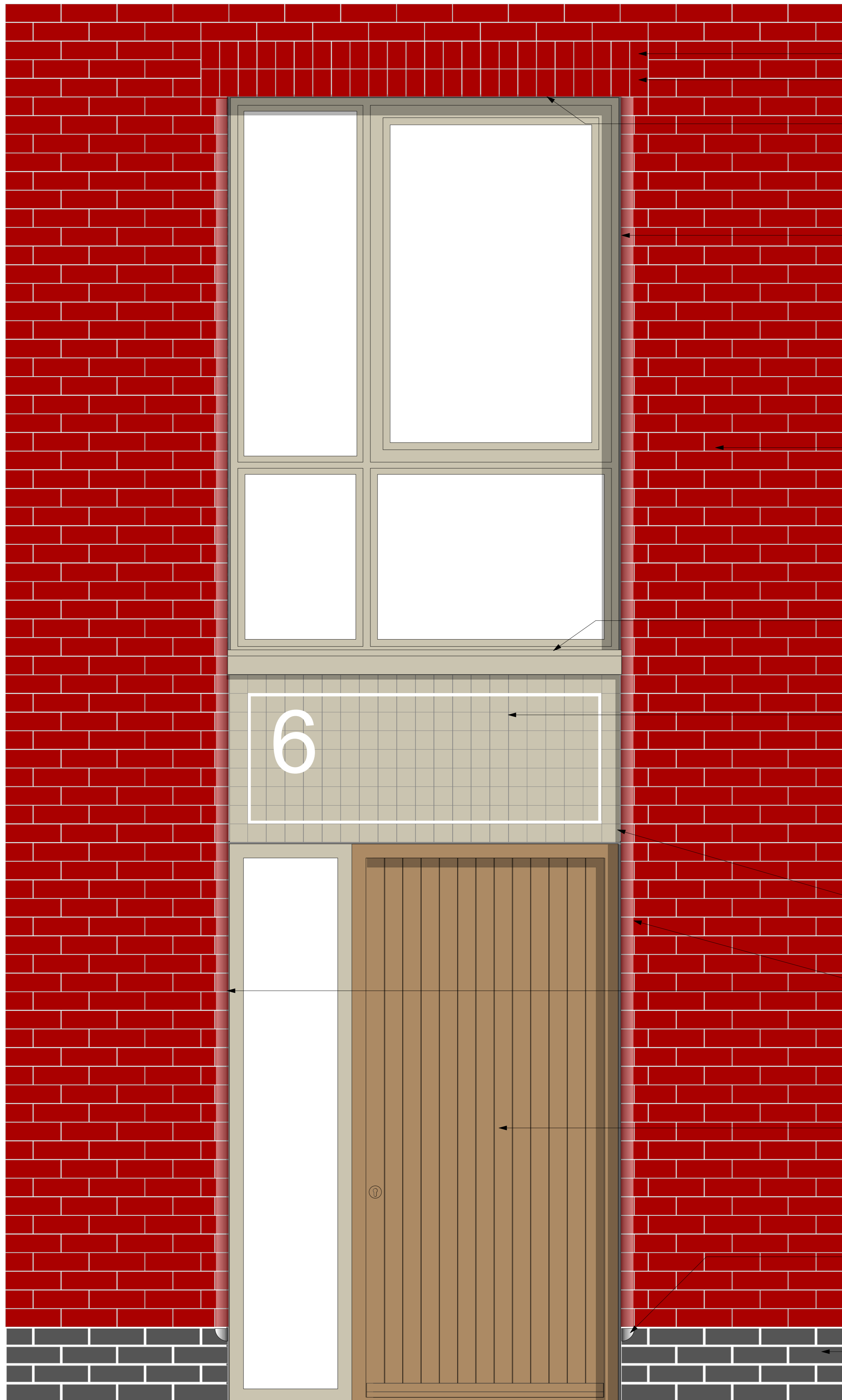


Matthew Lloyd Architects LLP
1 The Hanger
Parslova Works
Staplefield Road
London E2 8DD
T: 020 7613 1824
email: mat@matlloyd.co.uk
www.matlloyd.co.uk
02014

A1
Original Sheet Size



Date:	APR 15	Scale:	1:10 @A1 / 1:20 @ A3	Drawn by:	
Project:	Bourne Estate South for Higgins Construction PLC				
Drawing title:	Typical Door Detail				
Sheet No:	Sheet 8				
Reference:	BE14	Proj. No:	PLC 24.08	Rev:	



01 ENTRANCE DOOR - BLOCK 2 MAISONETTE ENTRANCE FROM STREET: ELEVATION (TILED FACADE)
1:10 @A1 / 1:20 @A3

02 ENTRANCE DOOR - BLOCK 2 MAISONETTE ENTRANCE FROM STREET: SECTION
1:10 @A1 / 1:20 @A3