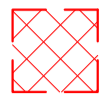

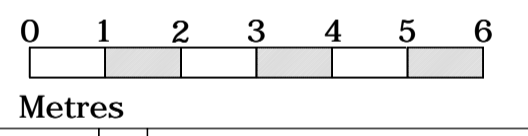
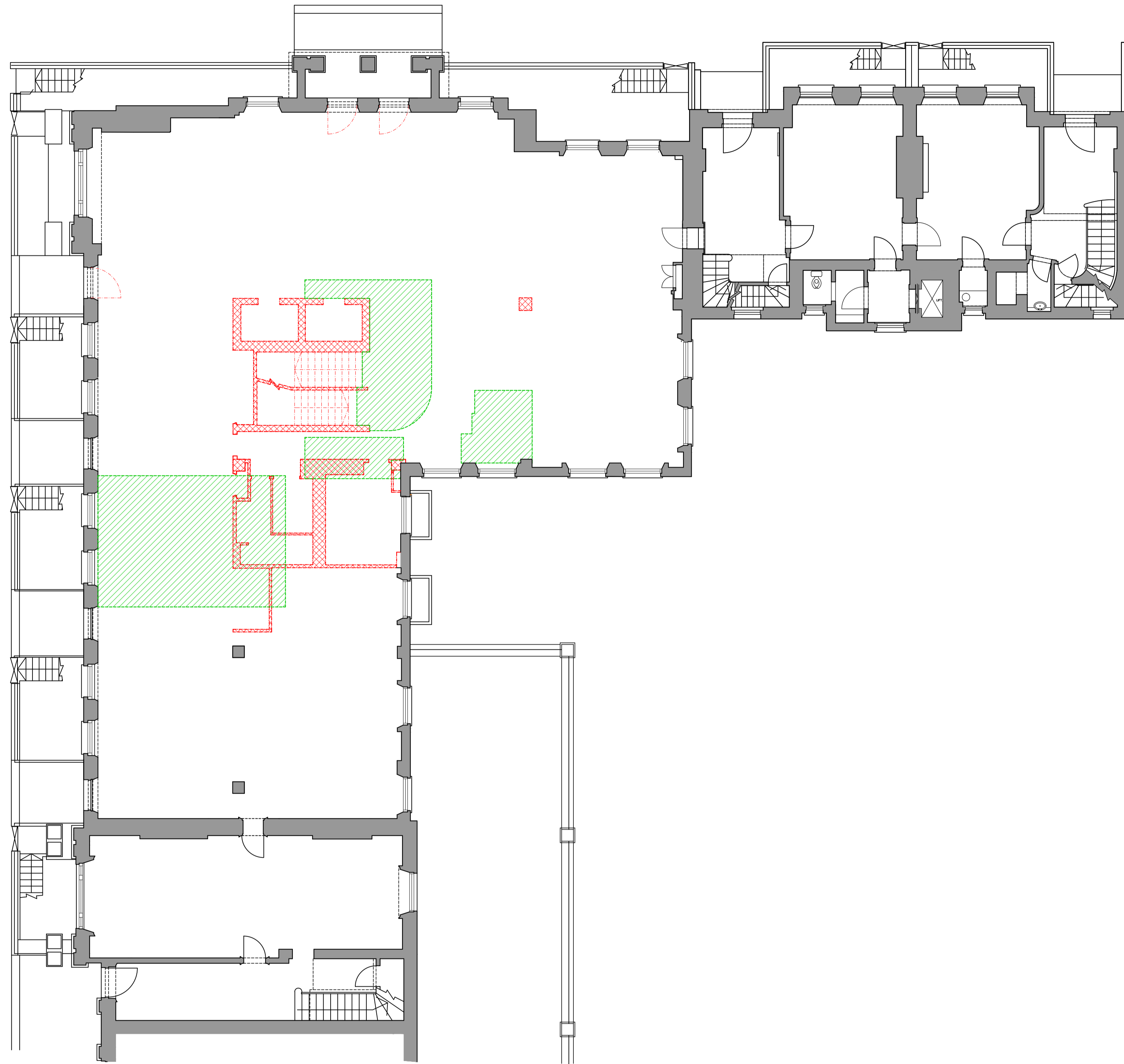


DO NOT SCALE OFF THIS DRAWING
REPORT ANY ERRORS OR
DISCREPANCIES TO THE
ARCHITECT PROMPTLY

-  Areas to be demolished
-  Slab to be removed and replaced at the same level



No	Date	By	Comments

Revision Notes

Status: **PLANNING**

Client:
Project Quad Ltd

Job:
6-10 Cambridge Terrace
Regents Park
London NW1

Drawing Title:
GROUND FLOOR
DEMOLITION

Scale: 1:100 @ A1 - 1:200 @ A3
Date: March 15 Drawn: Chkd:

MOXLEY
ARCHITECTS

47 Clapham High St London SW4 7TL www.moxley.co.uk
T +44 (0) 7720 8968 F +44 (0) 7627 2533 E info@moxley.co.uk

© Moxley Architects Limited. Reg No 2247305

Job No: **639** Drawing No: **2.021** Rev: **A**