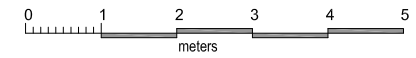
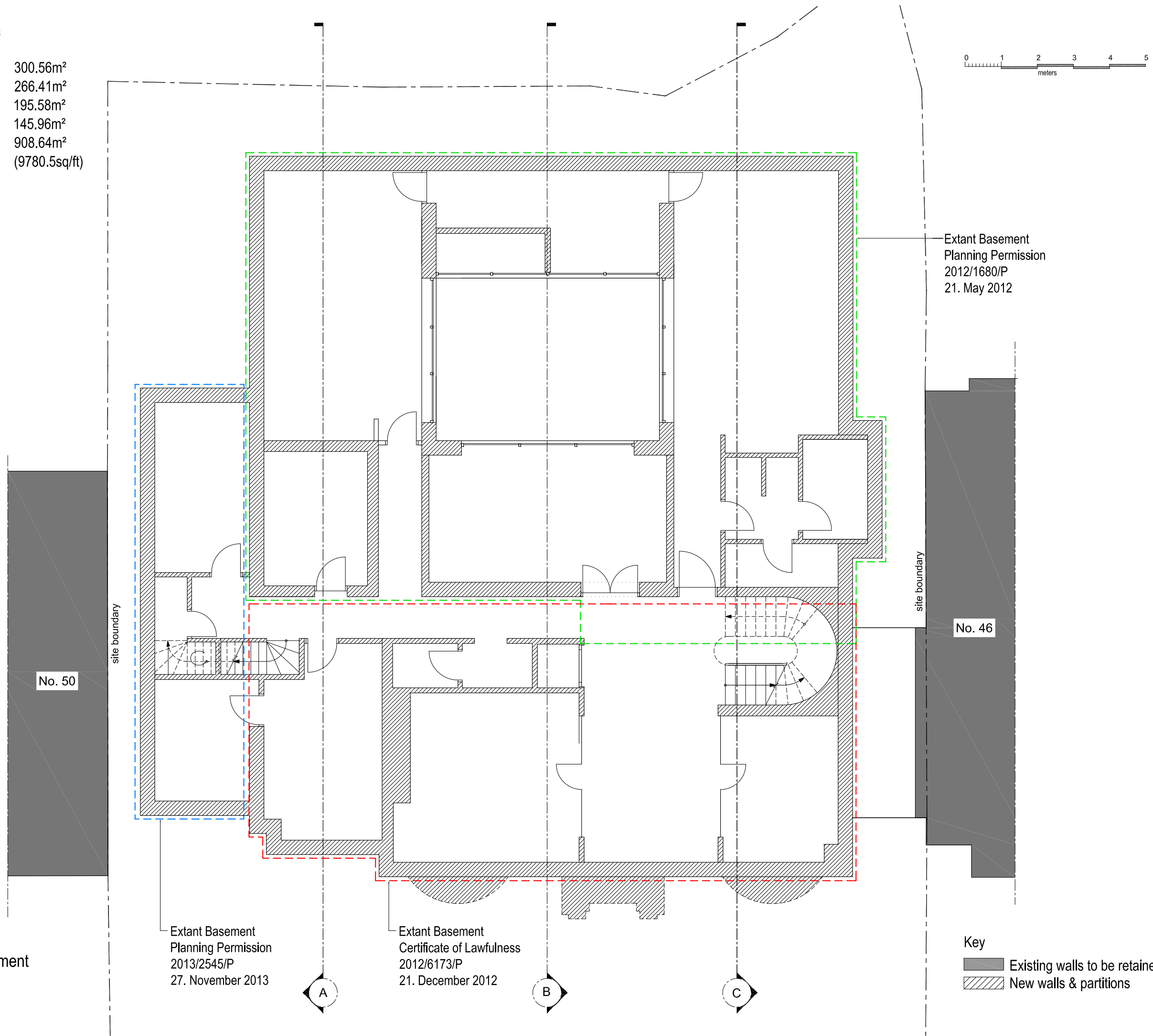


Gross Internal Floor Area

Lower Ground Floor	300.56m ²
Ground Floor	266.41m ²
First Floor	195.58m ²
Second Floor	145.96m ²
Total	908.64m ² (9780.5sq/ft)



NOTES:
 1. Do not scale drawings
 2. All dimensional discrepancies to be reported to architect
 3. The contractor must check all dimensions on site before construction / fabrication
 THIS DRAWING HAS BEEN PREPARED BY DS DESIGN SOLUTIONS AND THE DATA CONTAINED HEREIN MAY BE USED OR REPRODUCED ONLY WITH DS DESIGN SOLUTIONS' APPROVAL.



Extant Basement
 Planning Permission
 2012/1680/P
 21. May 2012

No. 50

No. 46

Extant Basement
 Planning Permission
 2013/2545/P
 27. November 2013

Extant Basement
 Certificate of Lawfulness
 2012/6173/P
 21. December 2012

Key
 Existing walls to be retained
 New walls & partitions

Proposed Basement
 Scale 1:50 @A1

A

B

C

Rev.	Description	Date	Signed	Checked

Issued For
INFORMATION

Drawing Scale = 1:50 @ A1
 1:100 @ A3

Project
 48 Elsworth Road
 London NW3

Drawing Title
 Proposed Basement Plan

561 Finchley Road
 London NW3 7BJ
 Phone 020 7433 3939
 Fax 020 7794 4279
 design solutions www.DesignSolutionsUK.com

North 	Scale	1:100 @ A3	Drawn by	IP	
	Date	30.03.2015	Checked by	DS	
Project no.	14/0296	Drawing no.	40	Revision	01