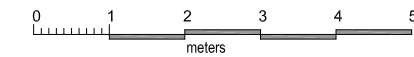
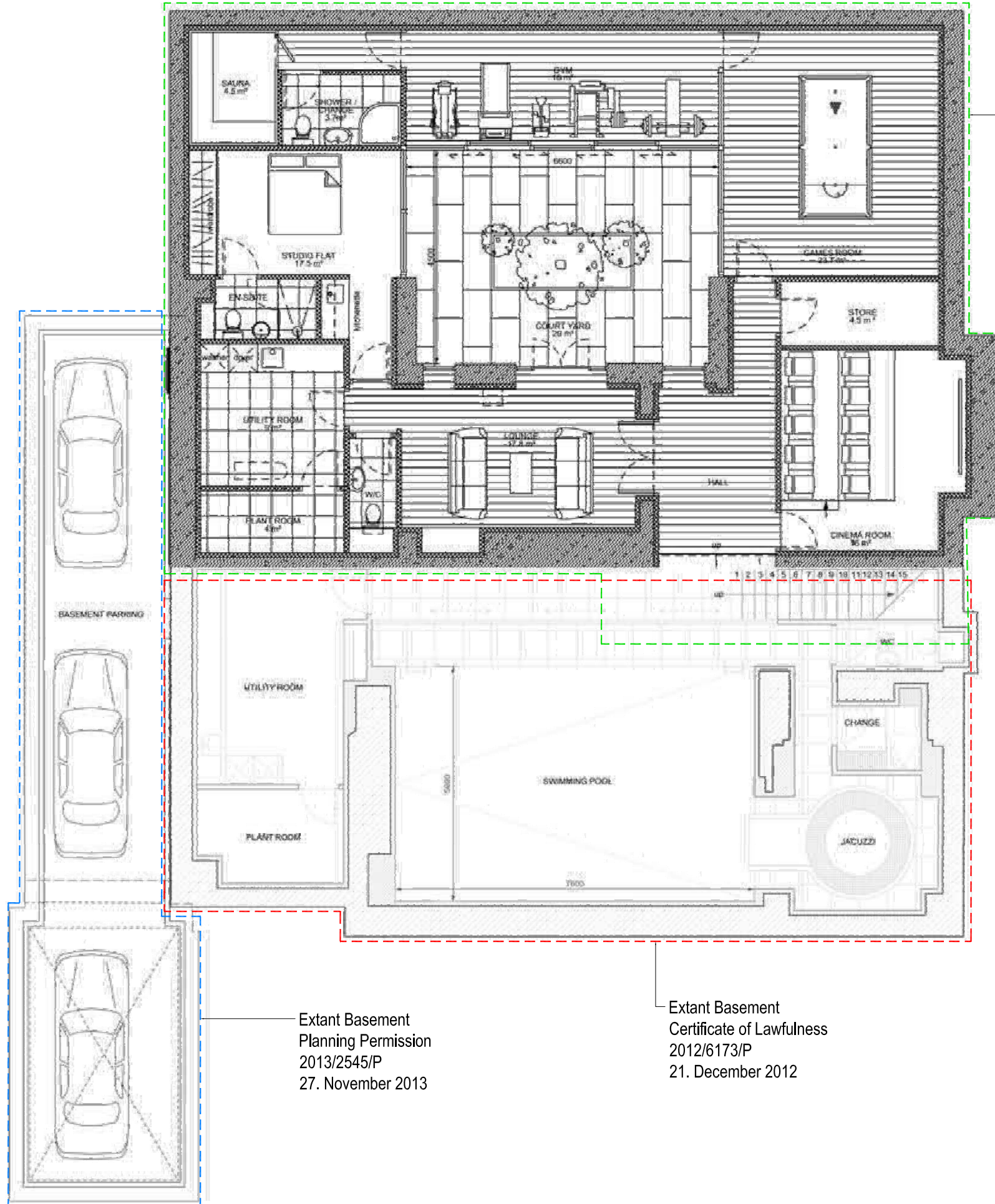


Gross Internal Floor Area

2012/1680/P	185.59 m <sup>2</sup>
2012/6173/P	113.30 m <sup>2</sup>
2013/2545/P	50.55 m <sup>2</sup>
<b>Total</b>	<b>349.44 m<sup>2</sup></b> <b>(3761.34 sq/ft)</b>



Extant Basement  
Planning Permission  
2012/1680/P  
21. May 2012

Extant Basement  
Planning Permission  
2013/2545/P  
27. November 2013

Extant Basement  
Certificate of Lawfulness  
2012/6173/P  
21. December 2012

Permitted Basement Plan  
Scale 1:50 @A1

NOTES:  
1. Do not scale drawings  
2. All dimensional discrepancies to be reported to architect  
3. The contractor must check all dimensions on site before construction / fabrication  
THIS DRAWING HAS BEEN PREPARED BY DS DESIGN SOLUTIONS AND THE DATA CONTAINED HEREIN MAY BE USED OR REPRODUCED ONLY WITH DS DESIGN SOLUTIONS' APPROVAL.

Rev.	Description	Date	Signed	Checked

Issued For  
**INFORMATION**

Drawing Scale = 1:50 @ A1  
1:100 @ A3

Project  
48 Elsworth Road  
London NW3

Drawing Title  
Permitted Basement Plan

design solutions www.DesignSolutionsUK.com

North	Scale	Drawn by
	1:100 @ A3	IP
Date	30.03.2015	Checked by
		DS
Project no.	14/0296	Revision
		45
		01