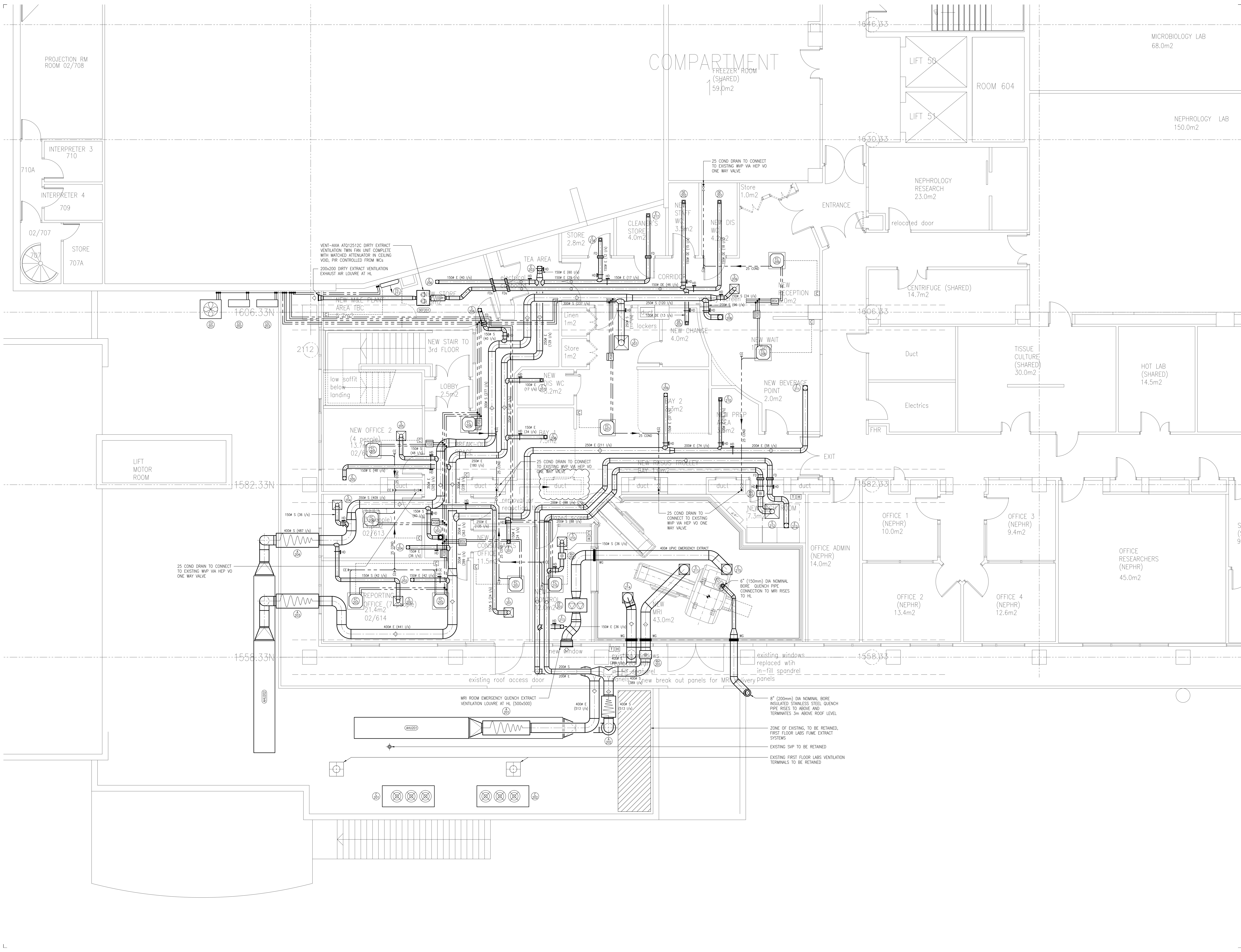


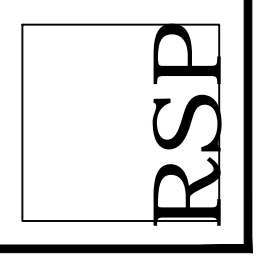
The Richard Stephens Partnership Limited uses the copyright in the building services engineering content of this drawing which is not to be used copied published or reproduced in whole or in part in any form without written consent

- notes
- DO NOT SCALE FROM THIS DRAWING
 - THIS DRAWING TO BE READ IN CONJUNCTION WITH RELEVANT ARCHITECTURAL AND STRUCTURAL DRAWINGS, OTHER SERVICES DRAWINGS AND SPECIFICATIONS



| rev | date | description | auth | chk |
|-----|----------|--------------|------|-----|
| T1 | 14.04.15 | TENDER ISSUE | DMP | AMP |

The Richard Stephens Partnership Limited
 Consulting Engineers
 Mill Court
 Mill Hill
 Edinborough
 Kent TN38 5DB
 Tel: 01732 782300
 Fax: 01732 762340
 E-mail: mail@rthrsp.co.uk
 Website: www.rthrsp.co.uk



client
**ROYAL FREE LONDON
 NHS FOUNDATION TRUST**

architect
ANSELL & BAILEY
 24-26 STEPHENSON WAY
 LONDON W61 2PD

project
UCL NAC MRI

title
**SECOND FLOOR
 VENTILATION SERVICES**

| | | | |
|----------|----------|----------|-----------|
| date | MAR 2015 | scale | 1:50 @ A0 |
| designed | AMP | cad | JVP/DMP |
| checked | AMP | approved | |

| TENDER DRAWING | |
|----------------|----------|
| drawing no. | 1539M521 |
| rev | T1 |