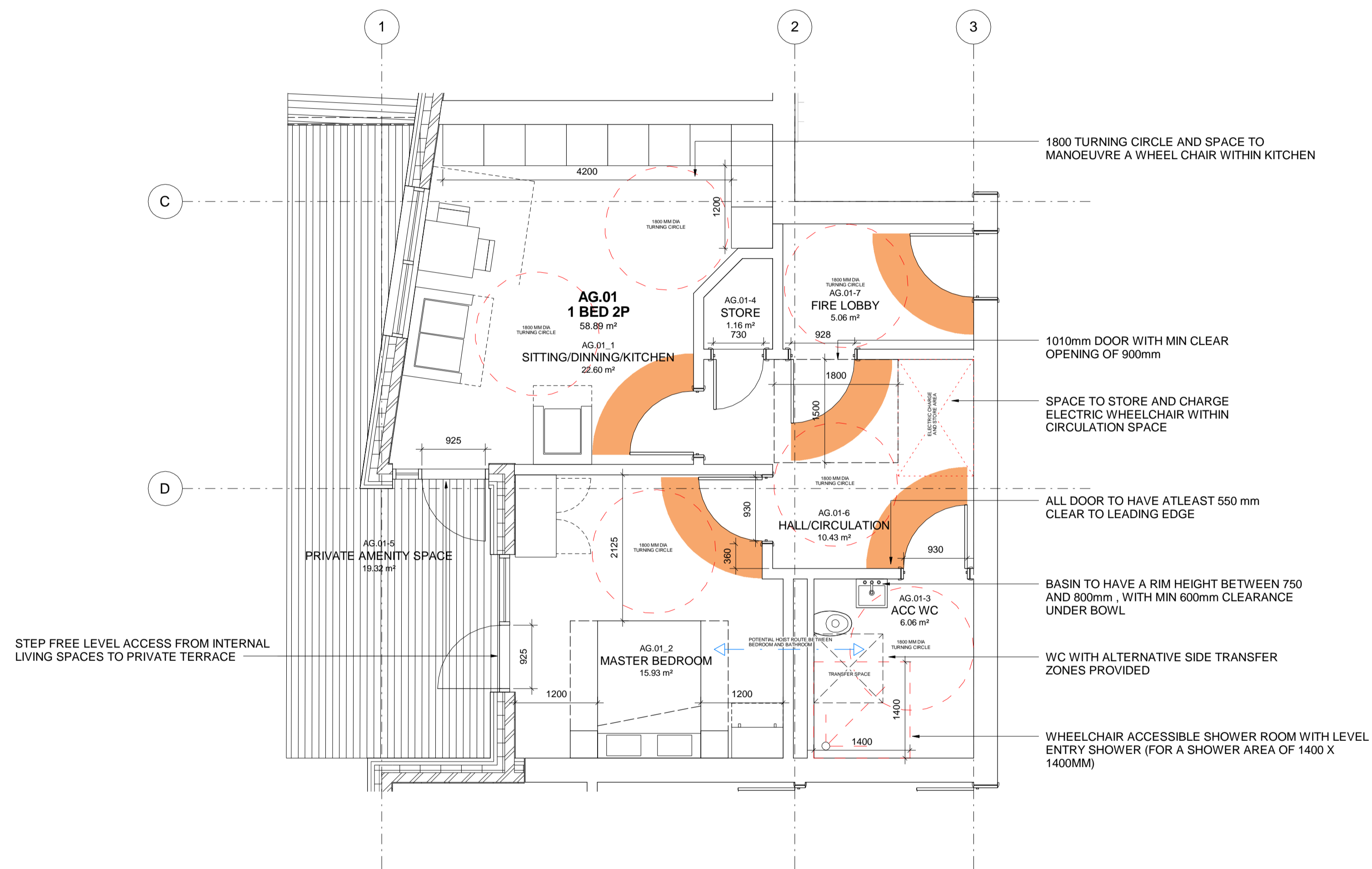


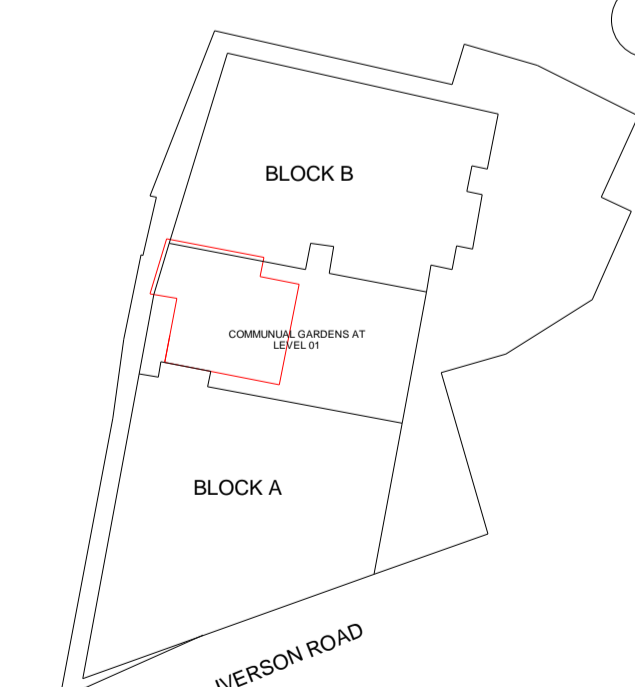
WHEELCHAIR ACCESSIBLE LAYOUT FOR UNIT AG.01 (1 BED 2 PERSON)

1. DWELLING HAS BEEN DESIGNED ON ONE LEVEL.
2. THE MAIN ENTRANCE DOOR IS 1010MM WITH A MIN CLEAR OPENING OF 900MM
3. THE ENTRANCE HALL WAY HAS A MANOEUVRING AREA OF 1800MM X 1800MM BEHIND THE ENTRANCE DOOR
4. A SPACE TO STORE AND CHARGE AN ELECTRIC WHEELCHAIR IS PROVIDED IN THE CIRCULATION AREA
5. ALL HALLS HAVE BEEN BUILT TO ACCOMMODATE AND FACILITATE 90 DEGREE TURNS
6. ALL DOORS IN ROOMS HAVE BEEN DESIGNED WITH 550MM CLEAR ON THE PULL SIDE AND MIN 300MM CLEAR ON THE PUSH SIDE
7. 1800MM TURNING SPACE HAS BEEN PROVIDED WITHIN THE KITCHEN SPACE AND THE LAYOUT HAS BEEN DESIGNED TO ALLOW FOR FLEXIBILITY OF THE USER
8. ALL BEDROOMS HAVE A 1200 X1200MM CLEAR SPACE TO ONE SIDE OF THE BED
9. BATHROOMS HAVE BEEN PROVIDED TO FACILITATE FRONTAL AND SIDE TRANSFER TO TOILETS.
10. WHEELCHAIR ACCESSIBLE BATHROOMS HAS A 1800X1800MM MANOEUVRING SPACE CLEAR OF ALL FITTING
11. IN ALL WHEELCHAIR ACCESSIBLE BATHROOMS A DRAINAGE GULLY IS TO BE PROVIDED TO FACILITATE THE INSTALLATION OF LEVEL ENTRY SHOWER (FOR A SHOWER AREA OF 1400 X 1400MM)
12. SUITABLE CONSTRUCTION IS IN PLACE TO ALLOW FOR A CEILING HOIST WITHIN THE APARTMENT BETWEEN MAIN BEDROOM AND BATHROOM
13. WINDOWS ARE ALL OPERABLE FROM A SEATED POSITION. HANDLE TO BE NO HIGHER THAN 800MM FROM FFL.
14. DOOR WAYS LEADING TO EXTERNAL TERRACE AREAS PROVIDE ADEQUATE LEVELS OF ACCESSIBILITY FOR A WHEEL CHAIR USER.
15. DESIGNED TO CAMDENS WHEEL CHAIR HOUSING GUIDE 2013. CONTRACTOR IS RESPONSIBLE TO REFER TO THE DOCUMENT TO ENSURE GUIDELINES WITHIN THE DOCUMENT ARE MET.



KEY RESIDUAL RISK

KEY PLAN



ORIGINATOR davidmillerarchitects WWW.DAVID-MILLER.CO.UK	DRAWING TITLE UNIT AG.01 - 1B2P - ACCESSIBLE/AFFORDABLE	
JOB TITLE 159-161 IVERSON ROAD, WEST HAMPSTEAD, LONDON, NW6 2RB	JOB NO 335	STATUS FOR INFORMATION
SCALE 1:50	DATE 08/05/14	CHECKED KM
PROJECT	ORIGIN	ZONE
IVR	DMA	ALL
LEVEL	TYPE	ROLE
GND	GA	A3
SEQ NO	REV	
108	A	

