

EXTERNAL FINISHES KEY

WALL FINISHES

- 

1. COPPER CLADDING:
MANUFACTURER: REYNOBOND / REYNOLUX (OR SIMILAR APPROVED)
FINISH: COPPER METALLIC
COLOUR NUMBER: E81075
COATING: DG5000
- 

2. EXTERNAL WALLS
MANUFACTURER: CAREA (OR SIMILAR APPROVED)
FINISH: ARDAL RIVEN(MINERAL COMPOSITE)
COLOUR: PIERRE NATURELLE 9104
- 

3. ANS LIVING WALL MODULE
500 X 250 X 100mm (OR SIMILAR APPROVED)

WINDOWS, PARAPET CAPPING, CURTAIN WALLING, CLADDING FRAME, LOUVRES AND INSULATED SPANDREL PANEL


- 

4. MANUFACTURER: INTERPON (OR SIMILAR APPROVED)
FINISH: PPC ALUMINIUM
COLOUR RAL 7037
- 

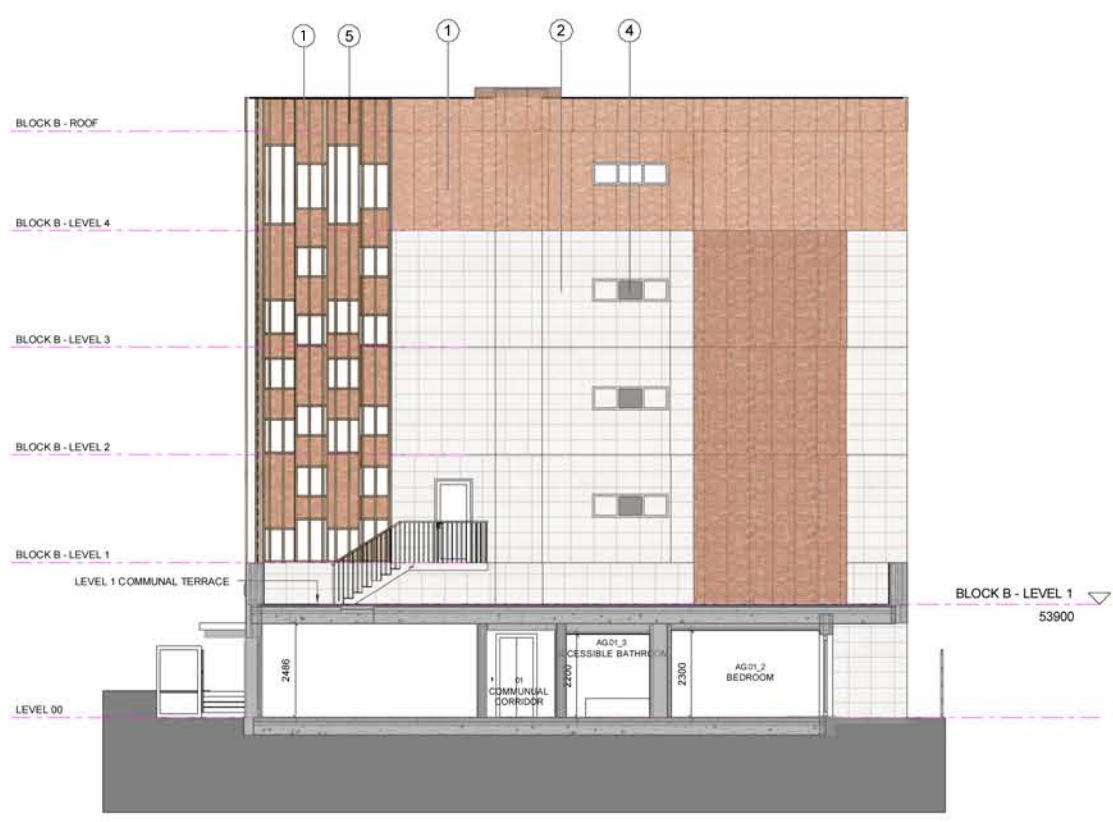
5. TIMBER LOUVRES:
MANUFACTURER: NORCLAD (OR SIMILAR APPROVED)
FINISH: SCANDINAVIAN REDWOOD
LOUVRE PLANK DIMENSIONS TO BE 50mm X 150mm
- 

6. INSULATED ROLLER SHUTTER
MANUFACTURER: CHARTER (OR SIMILAR APPROVED)
FINISH: INTEGR8 ULTRA (INSULATED)
COLOUR: RAL 7037

BALCONY BALUSTRADES

- 

7. 1100mm METAL BALCONY BALUSTRADE

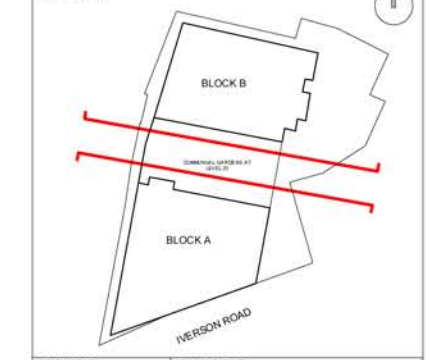


1 -PLANNING - BLOCK A- NORTH ELEVATION
1 : 100



2 -PLANNING - BLOCK B - SOUTH ELEVATION
1 : 100

| | |
|-----|---------------|
| KEY | RESIDUAL RISK |
|-----|---------------|



| | |
|--|---|
| ORIGINATOR davidmillerarchitects WWW.DAVID-MILLER.CO.UK | DRAWING TITLE BLOCK A & B INTERNAL ELEVATIONS |
| JOB TITLE 158-161 IVERSON ROAD, WEST HAMPSTEAD, LONDON, NW8 2RB | JOB NO 335 |
| STATUS FOR INFORMATION | DATE 01/28/15 |
| SCALE 1:100 | CHECKED KM |
| PROJECT | APPROVED DMA |
| ORIGIN | ROLE |
| ZONE | SEQ NO |
| LEVEL | REV |
| TYPE | |
| GA | |
| A3 | |
| 802 | |
| A | |

