



EXTERNAL FINISHES KEY

WALL FINISHES

- 1. COPPER CLADDING:
MANUFACTURER: REYNOBOND / REYNOLUX (OR SIMILAR APPROVED)
FINISH: COPPER METALLIC
COLOUR NUMBER: E81075
COATING: DG5000
- 2. EXTERNAL WALLS
MANUFACTURER: CAREA (OR SIMILAR APPROVED)
FINISH: ARDAL RIVEN(MINERAL COMPOSITE)
COLOUR: PIERRE NATURELLE 9104
- 3. ANS LIVING WALL MODULE
500 X 250 X 100mm (OR SIMILAR APPROVED)

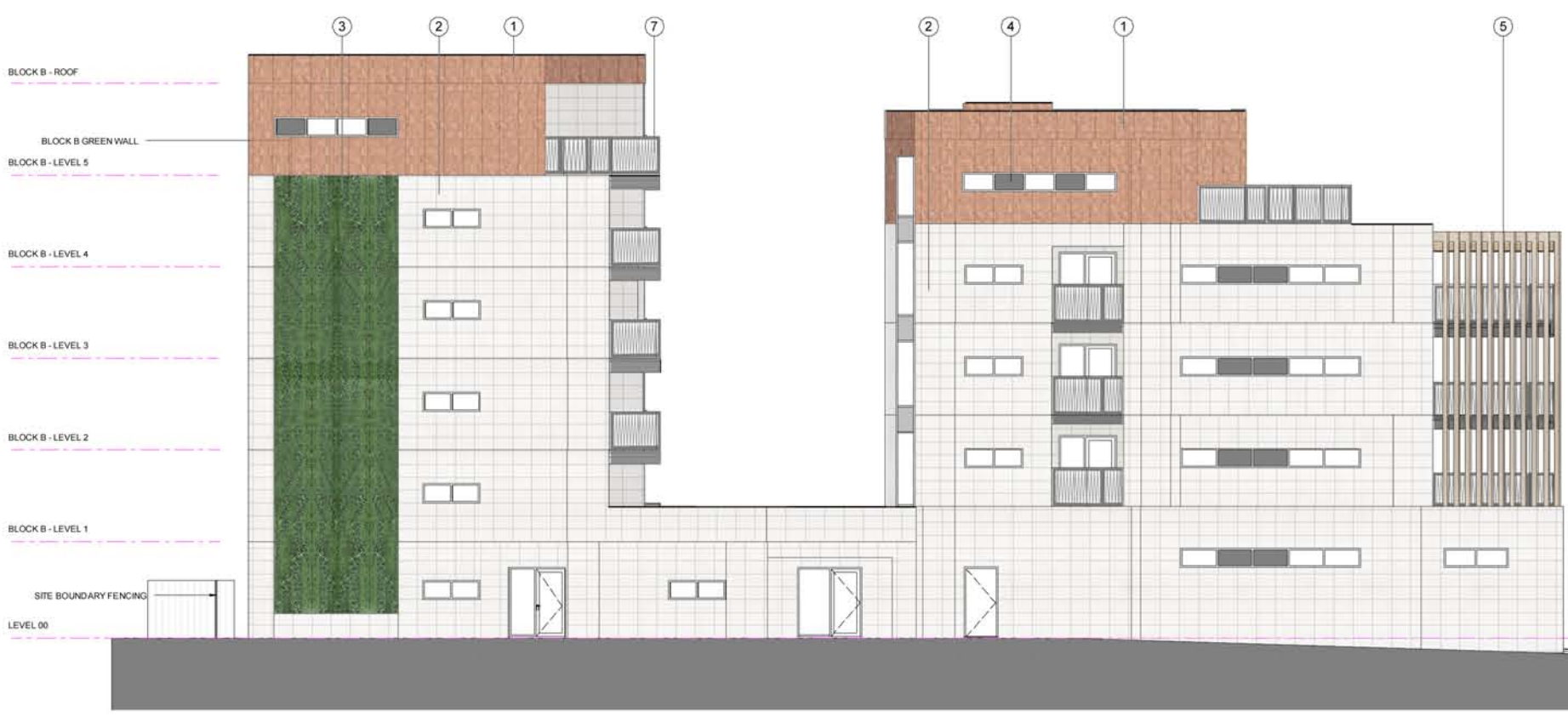
WINDOWS, PARAPET CAPPING, CURTAIN WALLING, CLADDING FRAME, LOUVRES AND INSULATED SPANDREL PANEL

- 4. MANUFACTURER: INTERPON (OR SIMILAR APPROVED)
FINISH: PPC ALUMINIUM
COLOUR RAL 7037
- 5. TIMBER LOUVRES:
MANUFACTURER: NORCLAD (OR SIMILAR APPROVED)
FINISH: SCANDINAVIAN REDWOOD
LOUVRE PLANK DIMENSIONS TO BE 50mm X 150mm
- 6. INSULATED ROLLER SHUTTER
MANUFACTURER: CHARTER (OR SIMILAR APPROVED)
FINISH: INTEGR8 ULTRA (INSULATED)
COLOUR: RAL 7037

BALCONY BALUSTRADES

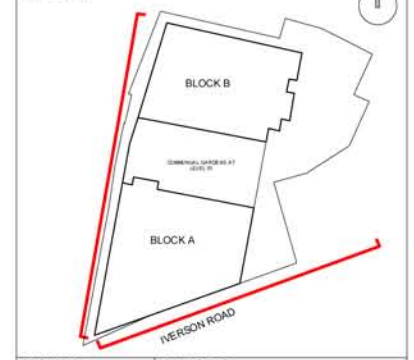
- 7. 1100mm METAL BALCONY BALUSTRADE

1 -PLANNING - SOUTH ELEVATION
1 : 100



2 WEST ELEVATION-PLANNING
1 : 100

KEY	RESIDUAL RISK
-----	---------------



ORIGINATOR David Miller Architects WWW.DAVID-MILLER.CO.UK	DRAWING TITLE SOUTH & WEST ELEVATIONS						
JOB TITLE 159-161 IVERSON ROAD, WEST HAMPSTEAD, LONDON, NW6 2RB	JOB NO 335	STATUS FOR INFORMATION					
PROJECT	ORIGIN	ZONE	LEVEL	TYPE	ROLE	SEQ NO	REV
IVR	DMA	ALL	ELE	GA	A3	801	A

