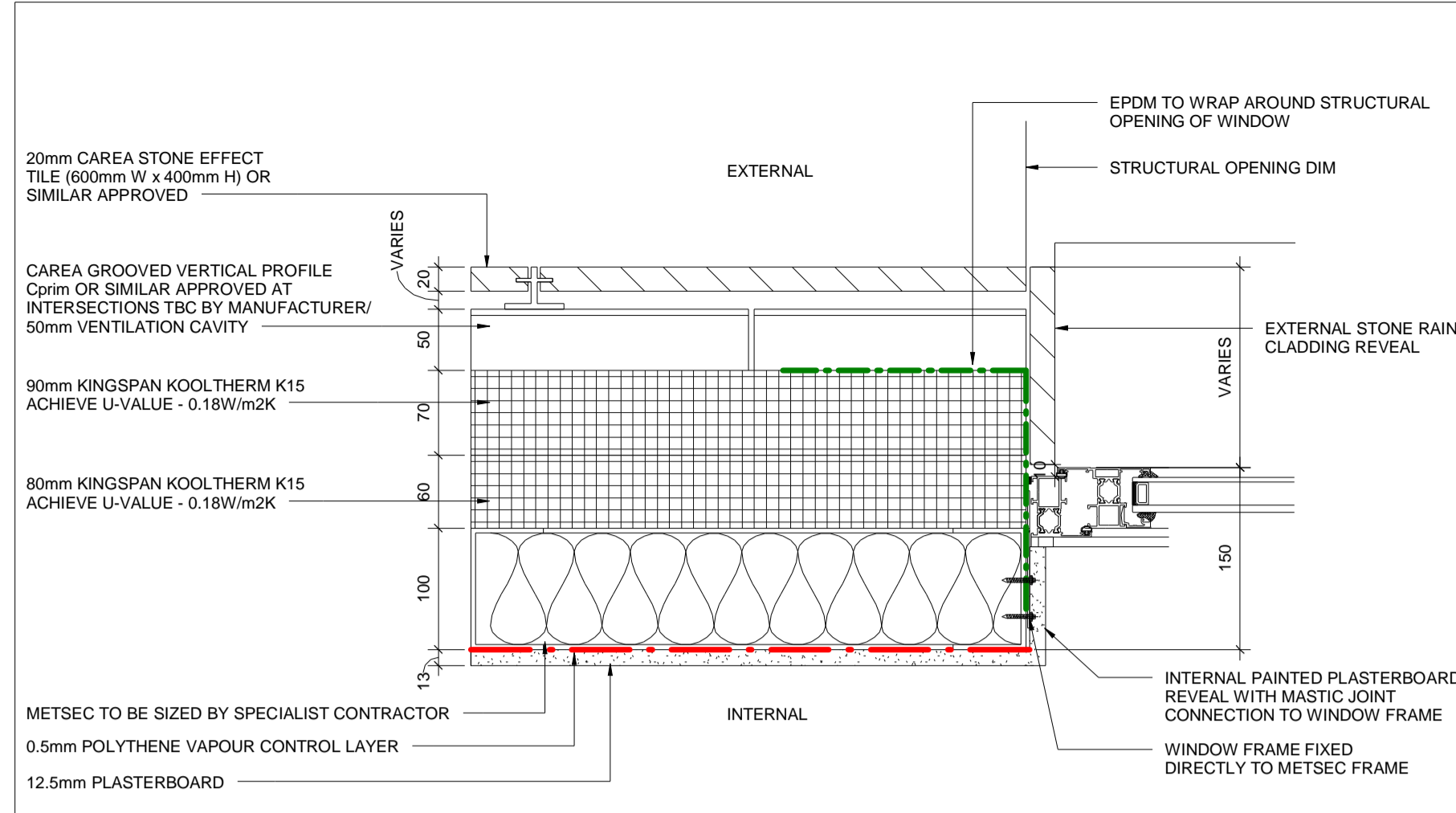
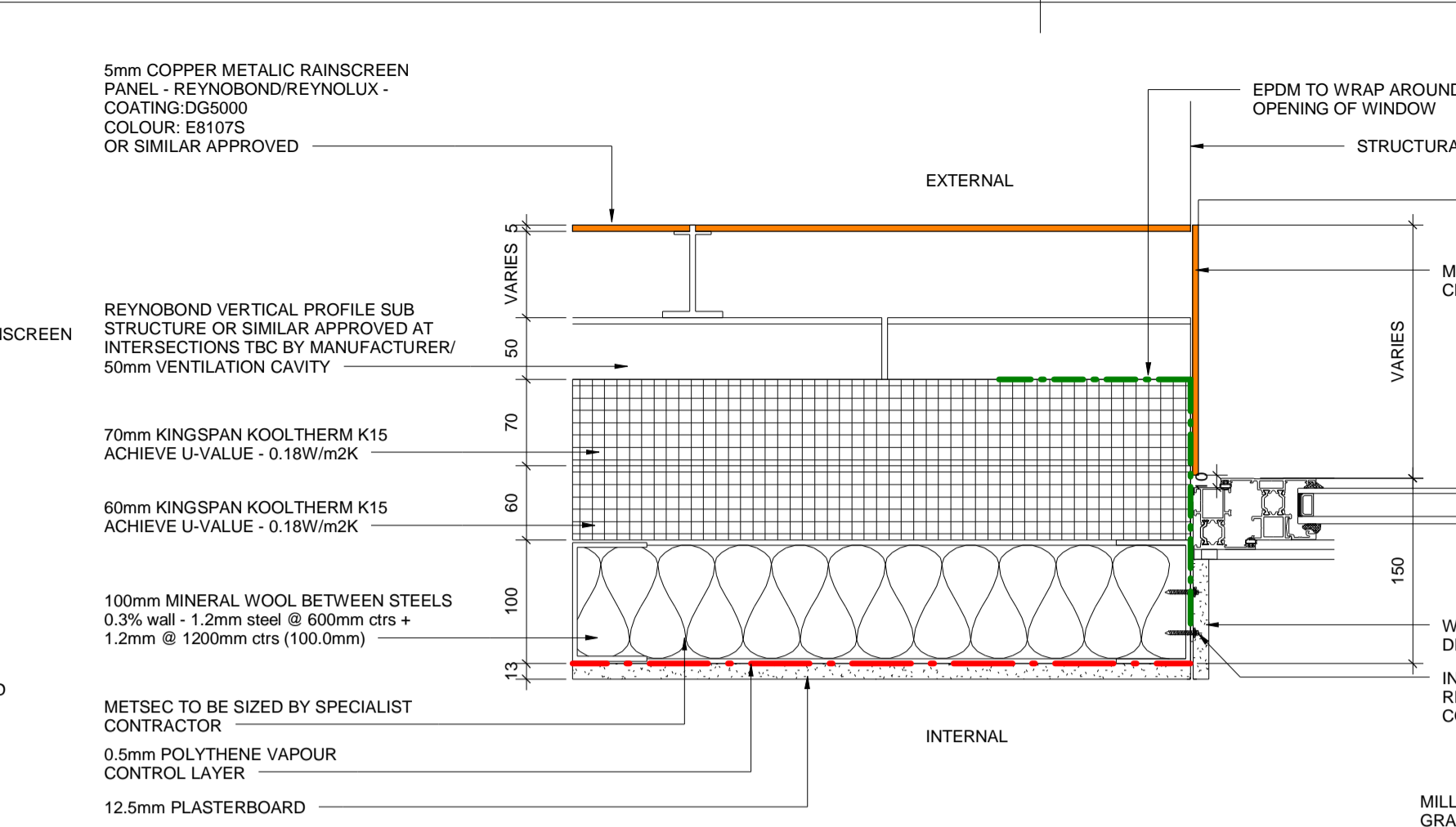


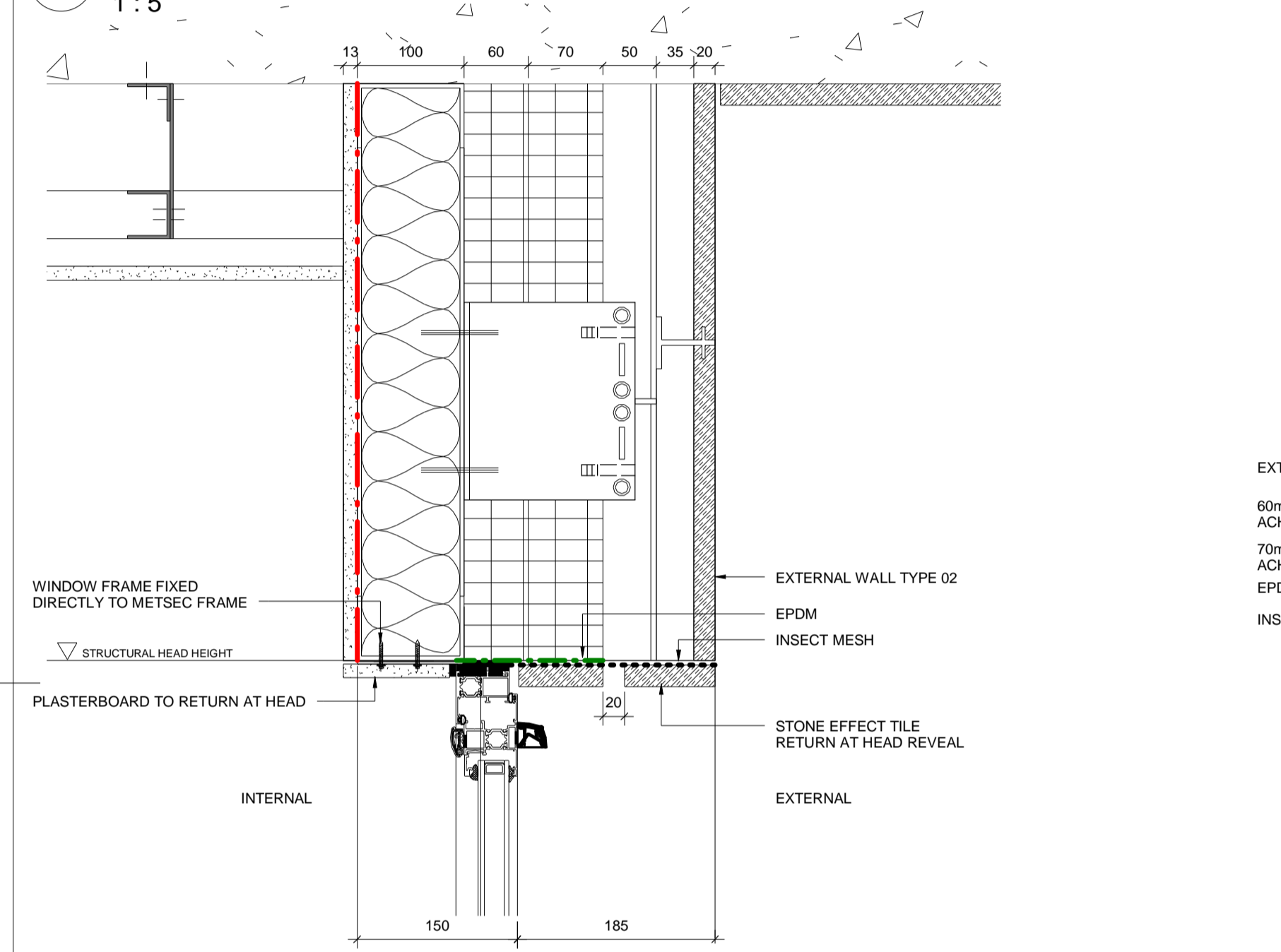
| REVISION DETAILS | | DATE | DRW | CHK |
|------------------|-----------------------------------|----------|-----|-----|
| A | Planning Details Issued to IPS | 23.03.15 | KM | DMA |
| B | Discharge of Planning Condition 2 | 09.04.15 | KM | DMA |



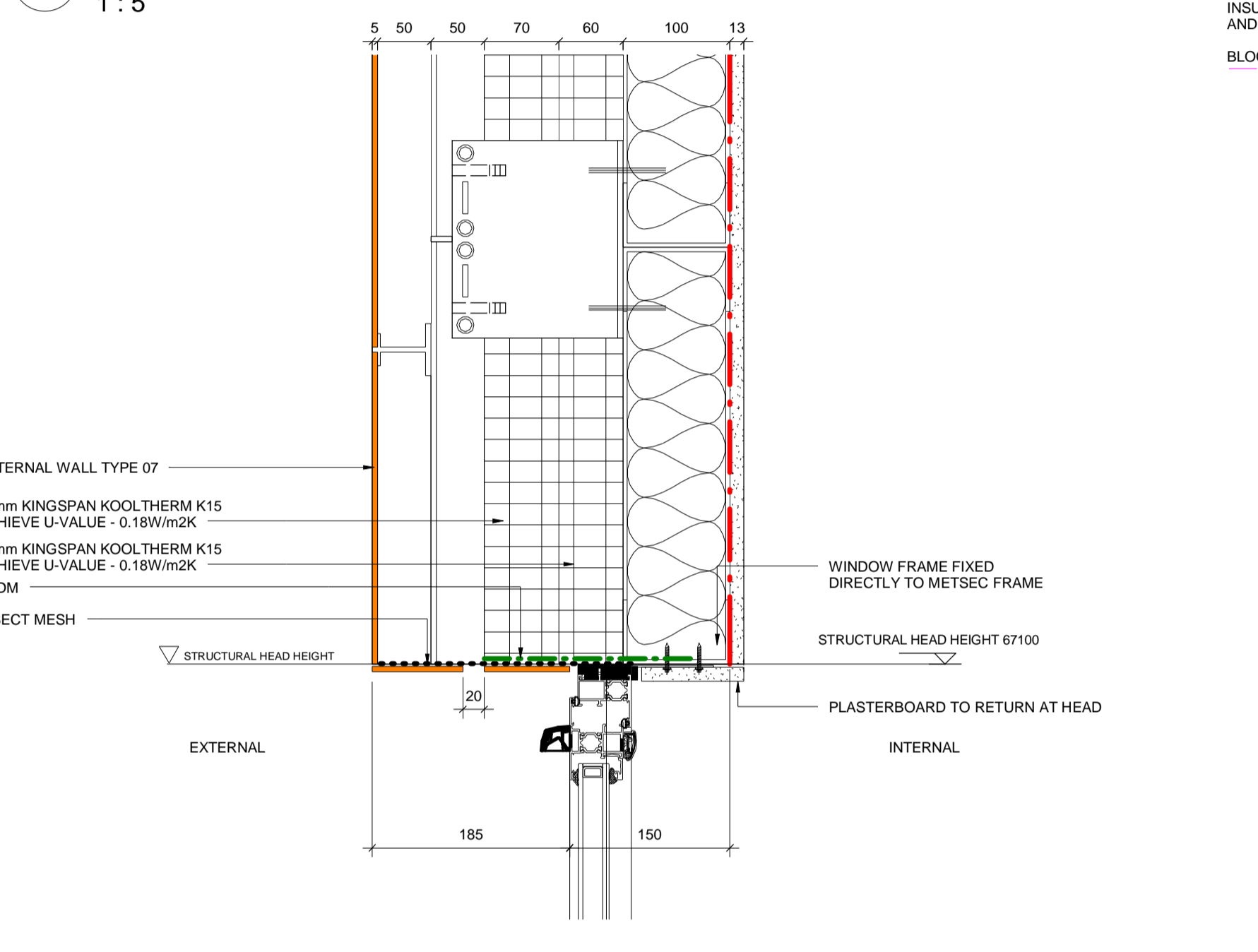
1 TYPICAL STONE RAINSCREEN CLADDING REVEAL - JAMB DETAIL 1:5



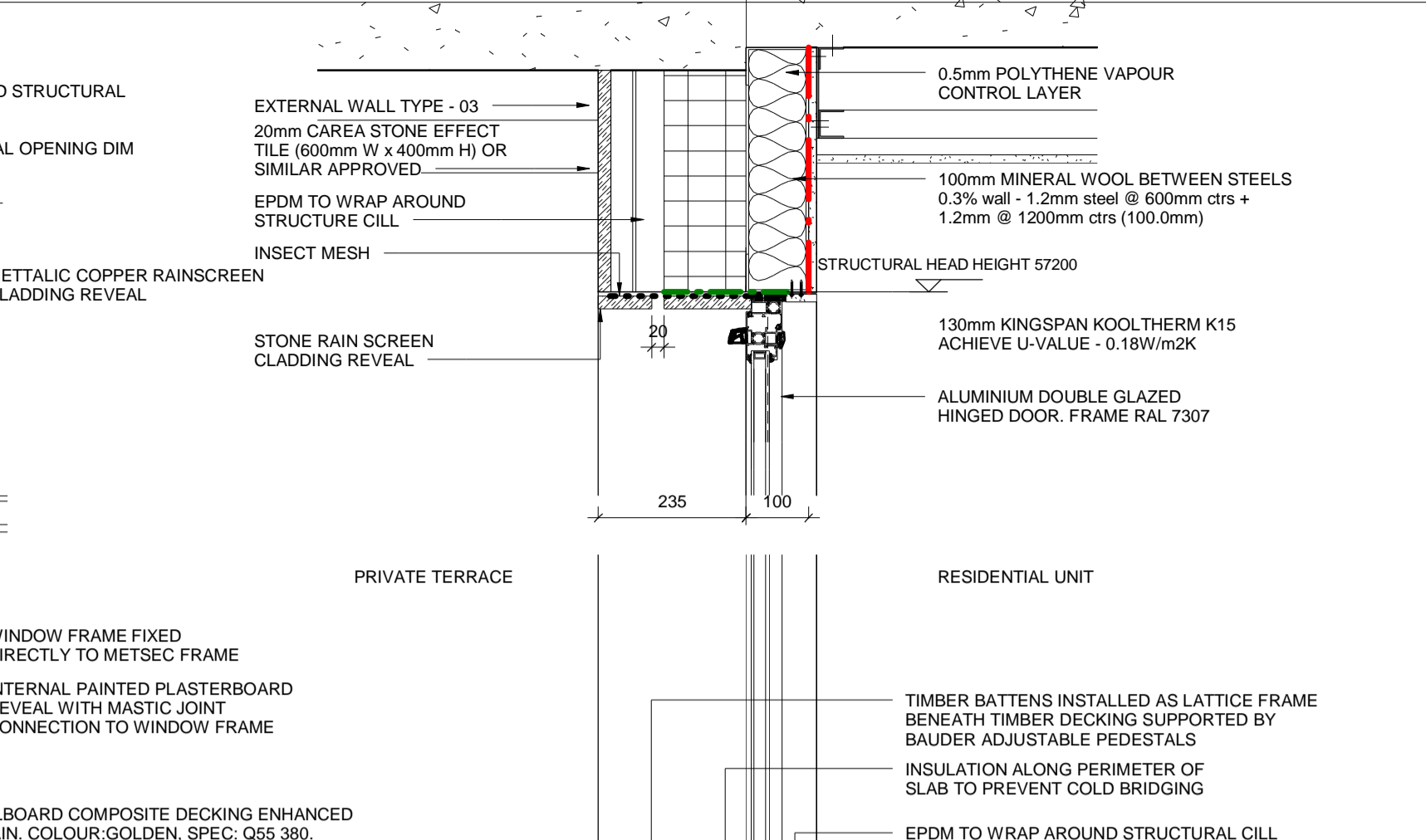
3 TYPICAL PPC ALUMINIUM RAINSCREEN CLADDING REVEAL - JAMB DETAIL 1:5



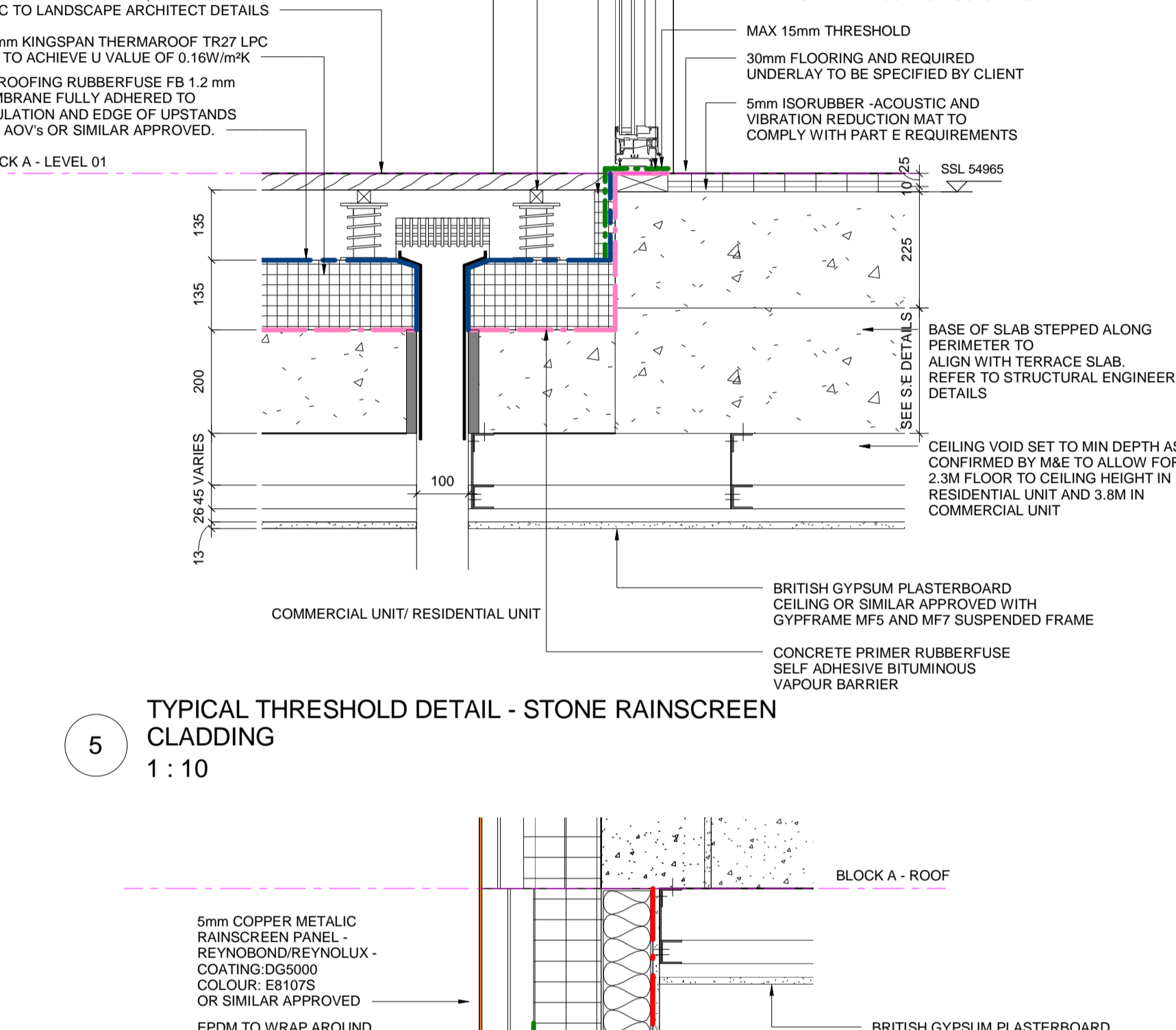
2 TYPICAL STONE RAINSCREEN CLADDING REVEAL - HEAD & CILL DETAIL 1:5



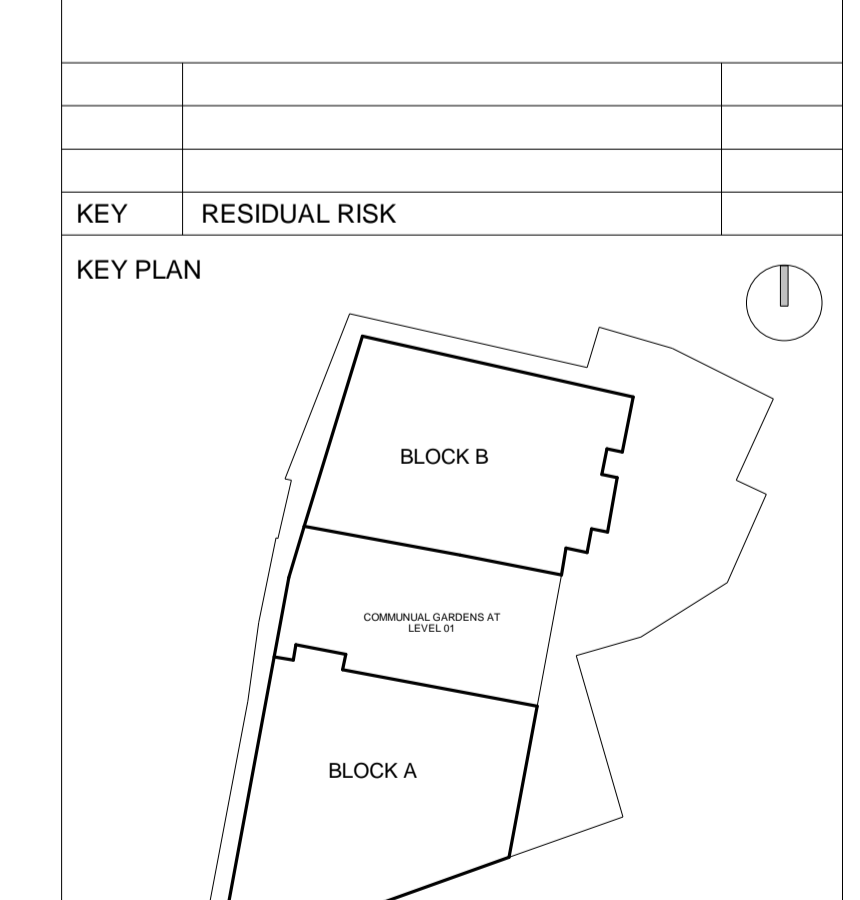
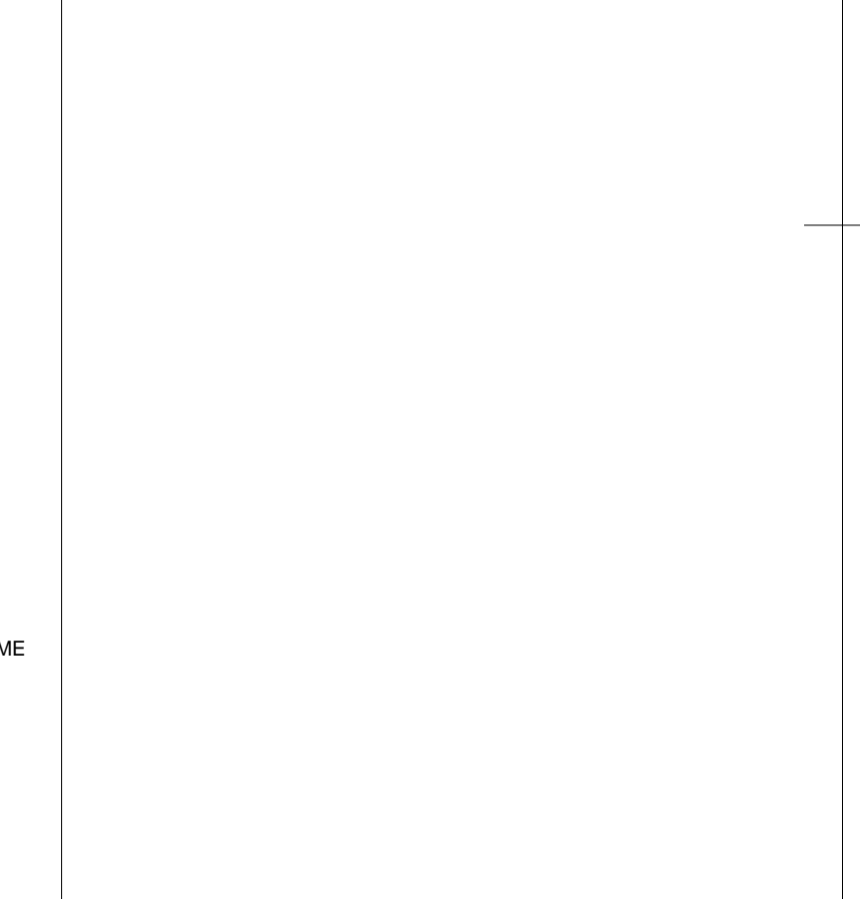
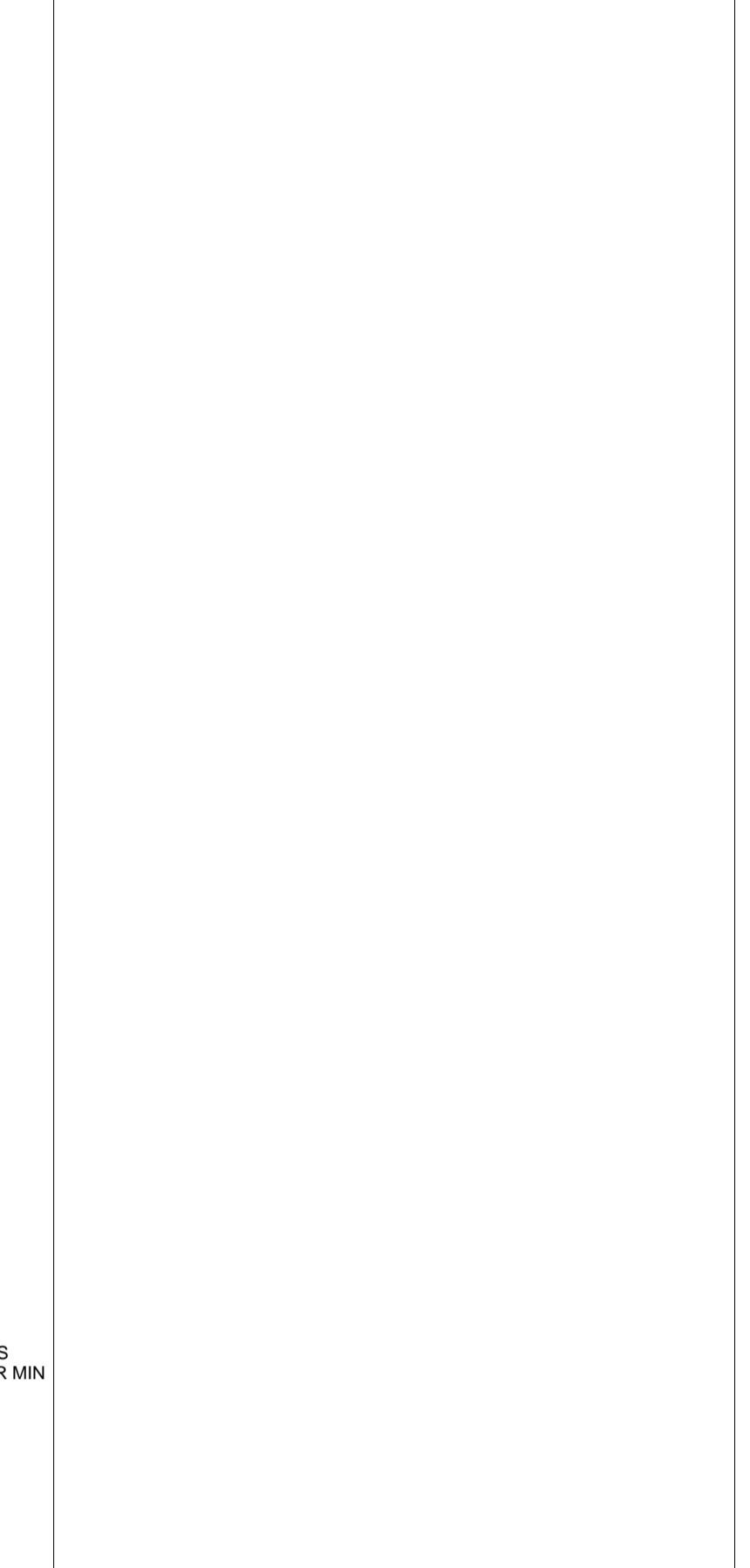
4 TYPICAL PPC ALUMINIUM RAINSCREEN CLADDING REVEAL - HEAD & CILL DETAIL 1:5



5 TYPICAL THRESHOLD DETAIL - STONE RAINSCREEN CLADDING 1:10



6 TYPICAL THRESHOLD DETAIL - PPC ALUMINIUM RAINSCREEN CLADDING 1:10



| KEY PLAN | |
|---------------|---|
| RESIDUAL RISK | |
| KEY PLAN | |
| ORIGINATOR | DAVID MILLER ARCHITECTS WWW.DAVID-MILLER.CO.UK |
| DRAWING TITLE | TYPICAL WINDOW AND DOOR REVEAL DETAILS |
| JOB TITLE | 159-161 IVERSON ROAD, WEST HAMPSTEAD, LONDON, NW6 2RB |
| JOB NO | 335 |
| STATUS | FOR INFORMATION |
| SCALE | As indicated |
| DATE | 03/03/15 |
| CHECKED | KM |
| APPROVED | DMA |
| PROJECT | ORIGIN |
| ORIGIN | ZONE |
| ZONE | LEVEL |
| LEVEL | TYPE |
| TYPE | ROLE |
| ROLE | SEQ NO |
| SEQ NO | REV |
| IVR | DMA |
| ALL | SL |
| DET | A3 |
| 821 | B |