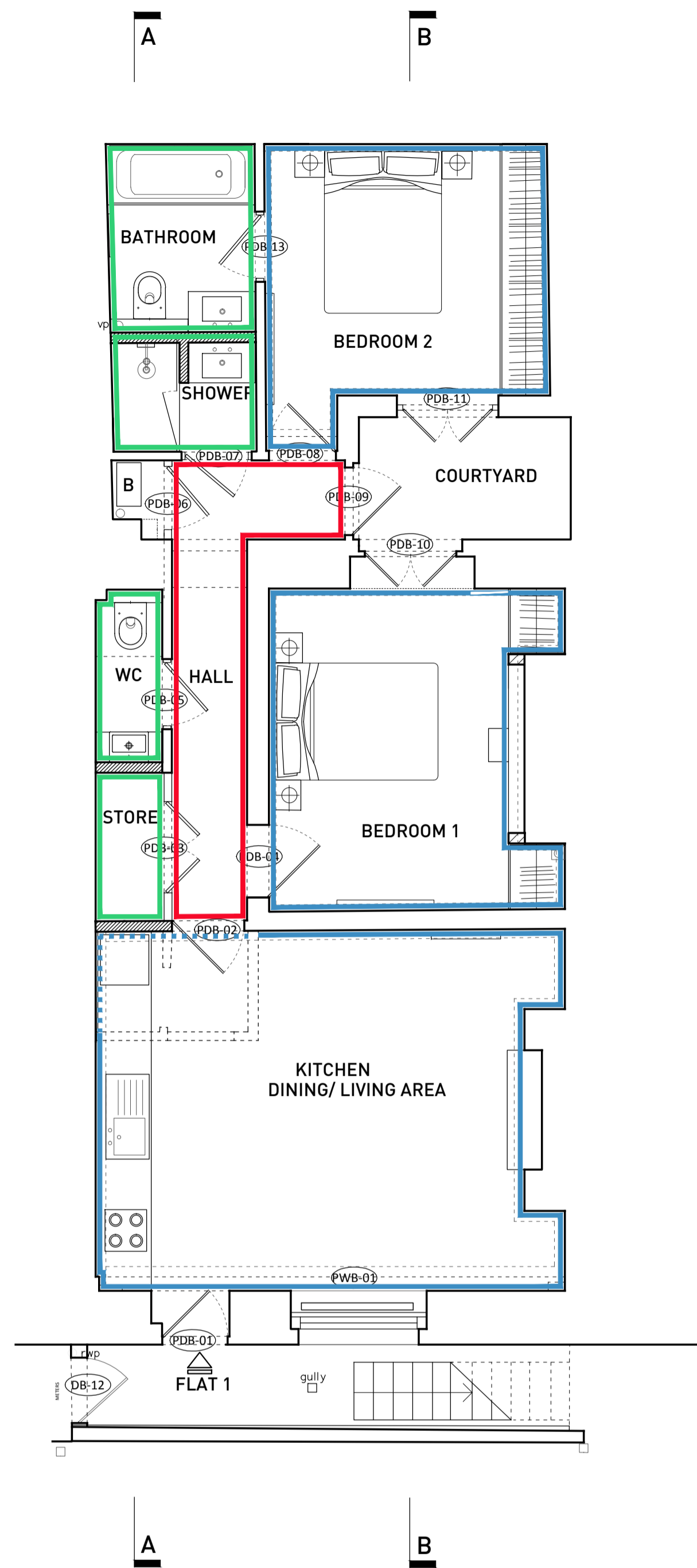
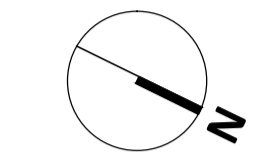
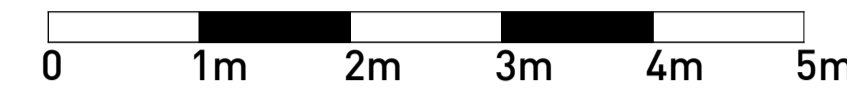
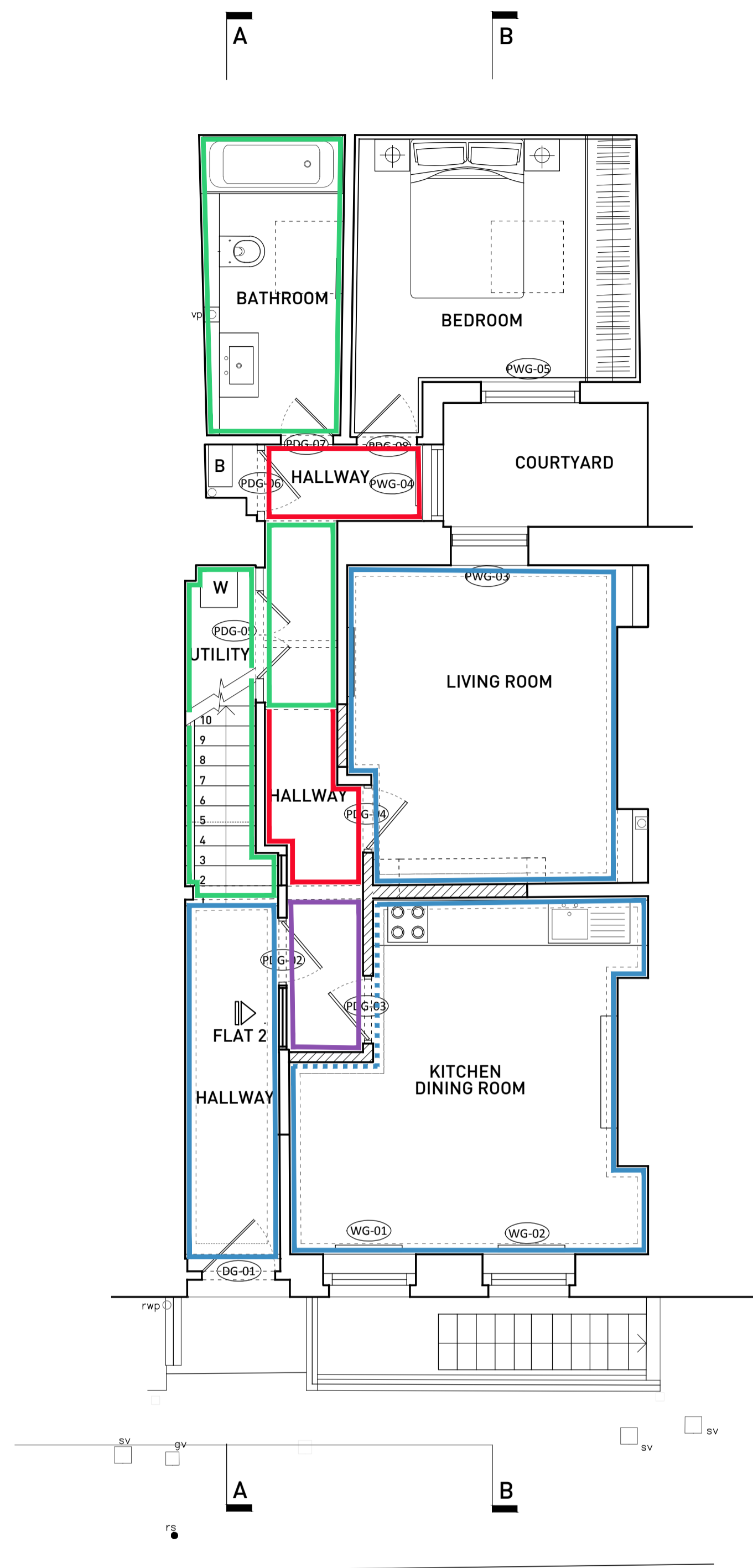


GENERAL NOTES

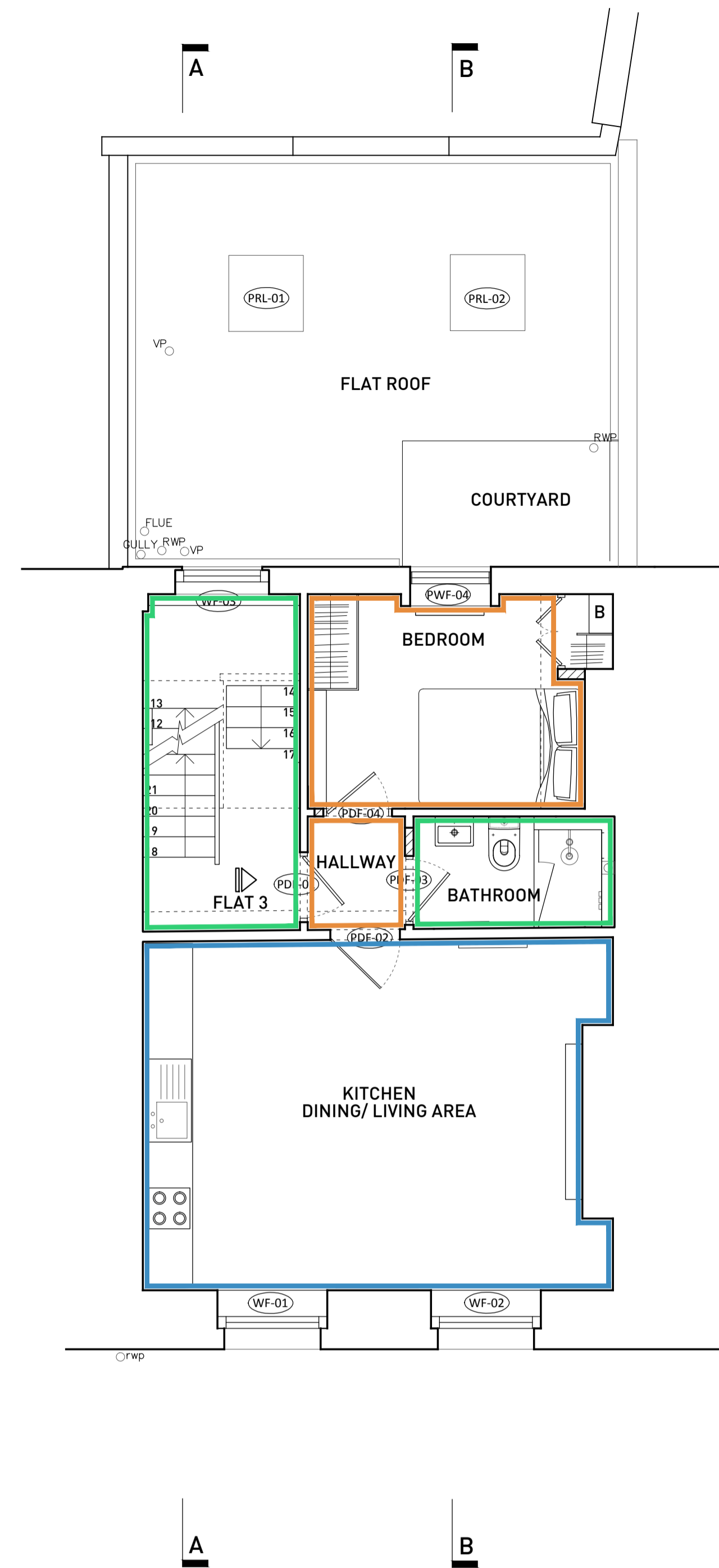
1. No dimensions to be scaled from this drawing for construction purposes
 2. Any Discrepancies found between this drawing and other documents should be referred immediately to the consultants
 3. This drawing should be removed from currency immediately a revised version is issued
 4. All dimensions in mm's
- Nash Baker Ltd, trading as Nash Baker Architects, Company Number: 7488242
 Directors: Simon Baker RIBA, Howard Nash RIBA
 © Copyright Reserved
 This drawing and its subject matter are the confidential property of Nash Baker Architects and shall not be copied, reproduced, used or disclosed to others without the prior written authority of Nash Baker Architects



LOWER GROUND FLOOR PLAN



GROUND FLOOR PLAN



FIRST FLOOR PLAN

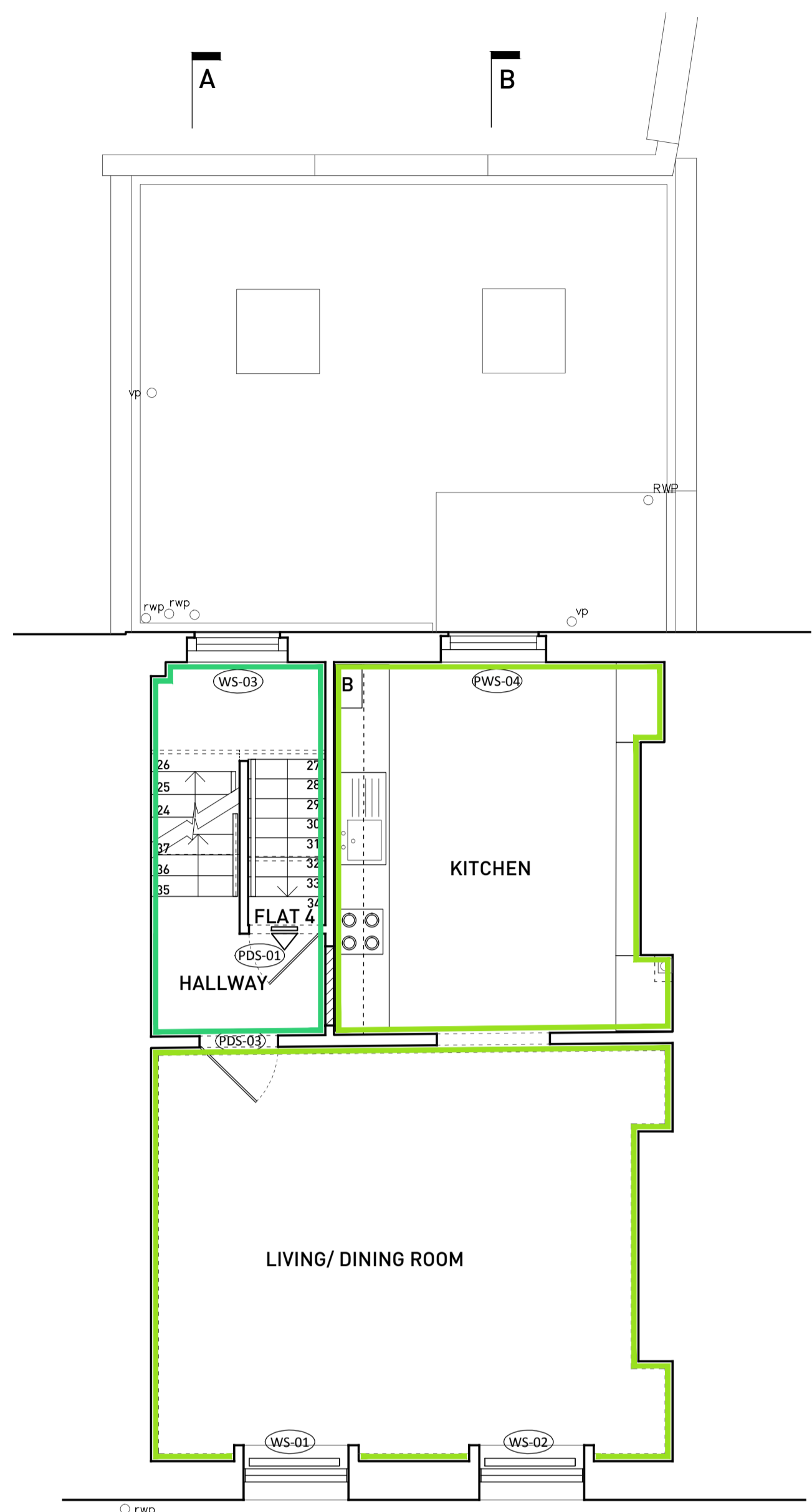
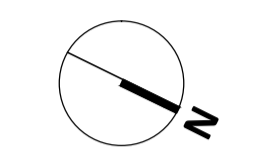
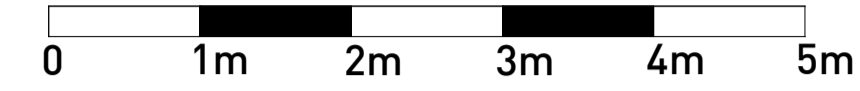
Job No.	Dwg No.	Rev.
1501	252	

- EXISTING CORNICE RETAINED
- INFILL CORNICE TO MATCH
- NO CORNICE

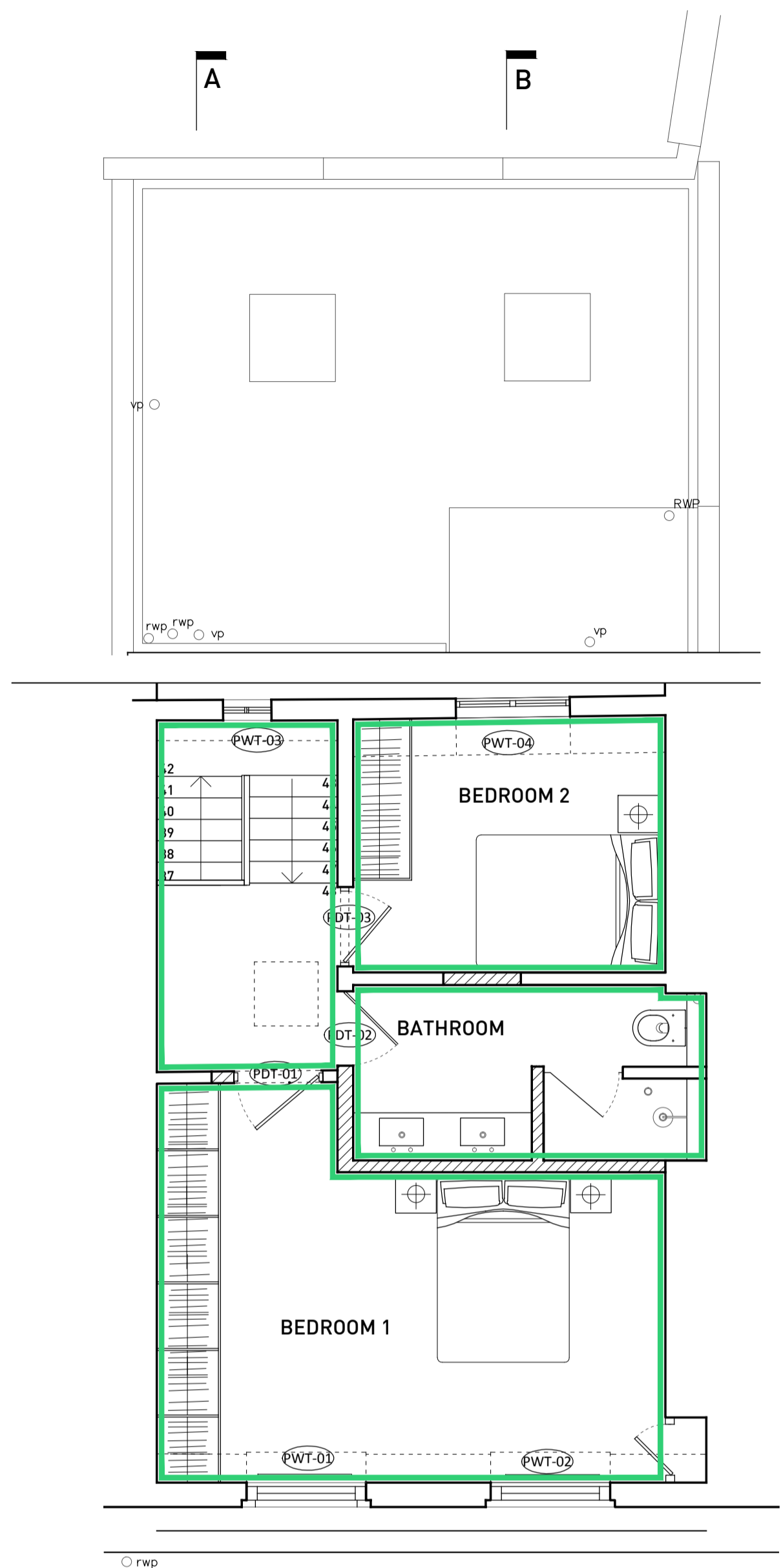


Rev.	Date	Reason For Issue	Chk
<p>NASH BAKER ARCHITECTS 147-149 KENSINGTON HIGH STREET LONDON, W8 6SH T +44 (0) 207 229 1558 INFO@NASHBAKER.CO.UK WWW.NASHBAKER.CO.UK</p>			
PROJECT		79 GRAYS INN ROAD LONDON, WC1X 8TP	
DRAWING TITLE		PROPOSED CORNICE	
JOB NUMBER	1501	DRAWING NUMBER	252
DRAWN	AF	CHECKED	
SCALE	1:50	PAPER SIZE	A1
DATE	10/06/2024	REVISION	

GENERAL NOTES
 1. No dimensions to be scaled from this drawing for construction purposes
 2. Any Discrepancies found between this drawing and other documents should be referred immediately to the consultants
 3. This drawing should be removed from currency immediately a revised version is issued
 4. All dimensions in mm's
 Nash Baker Ltd, trading as Nash Baker Architects, Company Number, 7488262
 Directors: Simon Baker RIBA, Howard Nash RIBA
 © Copyright Reserved
 This drawing and its subject matter are the confidential property of Nash Baker Architects and shall not be copied, reproduced, used or disclosed to others without the prior written authority of Nash Baker Architects







SECOND FLOOR PLAN



THIRD FLOOR PLAN

Job No.	Dwg No.	Rev.
1501	253	

<p>— EXISTING CORNICE RETAINED</p> <p>..... INFILL CORNICE TO MATCH</p> <p>— NO CORNICE</p>	<p>— TYPE A - STEVENSONS OF NORWICH - C133 SMALL SIMPLE COVE</p> 	<p>— TYPE B - STEVENSONS OF NORWICH N C03 - ALTRINGHAM PARK</p> 	<p>— TYPE C - STEVENSONS OF NORWICH N C115 - GEORGIAN STRAIGHT</p> 	<p>— TYPE D - STEVENSONS OF NORWICH N C114 - SMALL COVE</p> 
---	--	---	--	---

Rev	Date	Reason For Issue	Chk
<p>NASH BAKER ARCHITECTS 147-149 KENSINGTON HIGH STREET LONDON, W8 6SH T + 44 (0) 207 229 1558 INFO@NASHBAKER.CO.UK WWW.NASHBAKER.CO.UK</p>			
PROJECT		79 GRAYS INN ROAD LONDON, WC1X 8TP	
DRAWING TITLE		PROPOSED CORNICE	
JOB NUMBER	1501	DRAWING NUMBER	253
DRAWN	AF	CHECKED	
SCALE	1:50	PAPER SIZE	A1
DATE	19/03/2015	REVISION	